



Record USA Low Energy Products Price List

List Pricing effective July 7, 2025 (Rev 2)

Table of Contents

| | |
|--|----|
| Company Contacts | 4 |
| Manufacturers Rep Agencies | 5 |
| Terms and Conditions & Quick Ship Program | 6 |
| Handling Terminology | 7 |
| HA7 | 8 |
| HA8-LP | 9 |
| HA8-SP | 11 |
| HA9 | 13 |
| SS8200 (SimpleSwing) | 15 |
| EZ36 | 17 |
| Exploded Views | |
| HA7 | 18 |
| HA8-LP | 19 |
| HA8-SP | 20 |
| HA9 | 22 |
| SS8200 | 24 |
| Spare Parts Pricing | |
| Controls | 25 |
| Operators/Motor Gearboxes | 25 |
| Arms | 25 |
| Miscellaneous Parts | 27 |
| Decals | 29 |
| Accessories & Activation Pricing | |
| Activation | 30 |
| Accessories | 31 |

This price list supersedes and cancels all previous price lists. Prices shown are subject to change without notice. Login to the distributor area for most current revision.

Record USA Inc.

4324 Phil Hargett Rd.
Monroe, NC 28110
704 289 9212
www.recorddoors.com

Inside Sales Team

Mark Dugo
Vice President of Sales
704 292 5373
mark.dugo@recorddoors.com

Blue Houser
Vice President of Business Development
803 804 3768
blue.houser@recorddoors.com

Misty Kohnle
Sales Operations Manager
704 290 0223
misty.kohnle@recorddoors.com

Missy Laney
Senior Account Manager
Phone: 704 290 0980
missy.laney@recorddoors.com

Dayana Alvaran
Customer Service Manager
704 290 0234
dayana.alvaran@recorddoors.com

Product Support

HA Product Line
Dan Wise
Phone: 833 921 1337
dan.wise@recorddoors.com

SS8200 Line
Frank Keeling
Phone: 515 707 8671
frank.keeling@recorddoors.com

Outside Sales Team

John Harraman
Sales Development Representative
Mobile: 980 425 2860
john.harraman@recorddoors.com

Mark Huntsman
Director of Technical Sales
Mobile: 704 681 1411
mark.huntsman@recorddoors.com

Liam Lehn
Business Development Manager
Mobile: 330 360 2601
liam.lehn@recorddoors.com

Tony Licciardello
OEM Sales Manager
Mobile: 704 609 3674
tony.licciardello@recorddoors.com

David Pickers
Vice President of Direct Sales
Mobile: 704 315 7392
david.pickers@recorddoors.com

Timothy Usnik
Strategic Sales Distribution Manager
Mobile: 404 290 8522
timothy.usnik@recorddoors.com

Holiday Schedule

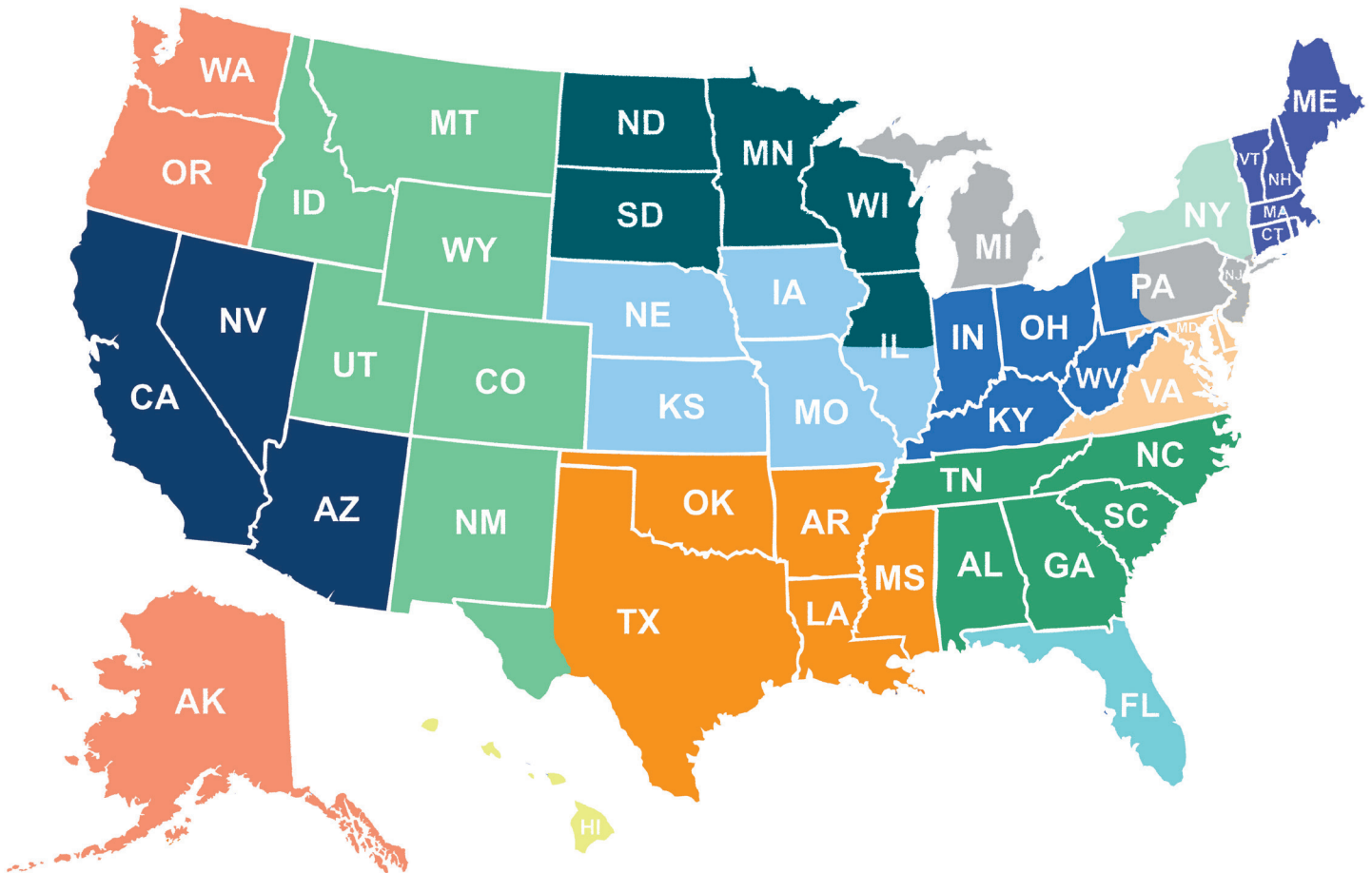
Record USA will be CLOSED on the following dates:

2025

New Year's Day - January 1
Presidents' Day - February 17
Memorial Day - May 26
Juneteenth - June 19
Independence Day – July 4
Labor Day – September 1
Thanksgiving Day – November 27
Day After Thanksgiving – November 28
Christmas Eve - December 24
Christmas - December 25

* dates subject to change

Manufacturers Rep Agencies



Liam Lehn (MI, Eastern PA, NJ, NY Metro)
330 360 2601, liam.lehn@recorddoors.com

AWA (IN, KY, OH, WV, Western PA)
Austin Wendt 248 961 6163, austin@awareps.com

ASA (IA, So IL, NE, KS, MO)
John DeFrates 847 691 6937 jdfrates@charter.net

MAS (CT, MA, VT, NH, ME, RI)
Mark Szczepanski 860 604 1769 mark@massalesllc.com

AMA (FL)
Jack Sheehan 407 353 1223 jack@division8consulting.com

ASH (So CA, So NV, AZ)
Mark Ferraro 714 920 6440, mark.ferraro@ash.team
Sequoia Sales (CA, NV, AZ)
Fred Chubbuck 559 799 2130, fred.chubbuck@gmail.com

Dugan Associates (NY, excluding NYC)
Kyle Leach 518 281 4018, kyle@duganassoc.com

WJ Schelp (ND, SD, MN, WI, No IL)
Scott Schelp 612 859 4890 scott@wjschelp.com

TBD

Region West (WA, OR, AK)
Rich Ward 702 232 1022

The Rep Collective (CO, UT, MT, WY, ID, NM, El Paso Area)
800 321 7233, darlene@therepcollective.biz

Tillman Sales (NC, SC, GA, TN, AL)
Grant Tillman 470 922 5022, grant@tillmansalesgroup.com

Core Products (HI)
Brad 808 866 2117

John Harraman (MD, DC, VA, DE)
980 425 2860, john.harraman@recorddoors.com

Terms and Conditions

- » Prices are subject to change without notice. Record is not responsible for typographical or pricing errors, and such errors will not be honored.
- » Cancelled orders are subject to fees.
- » Minimum \$50 order (all orders received less than \$50 will be invoiced at \$50)
- » To confirm your discount and/or net pricing please contact your customer service representative.
- » To discuss volume requirements to achieve the next level of pricing, please contact Record sales management.



- » Items listed in bold qualify for *Quick Ship*.
- » \$15 drop ship fee.
- » We reserve the right to limit quantities.
- » No changes or cancellations will be accepted.
- » Quoted projects do not qualify for *Quick Ship* program.

Swing Door Operator Handing Terminology Chart

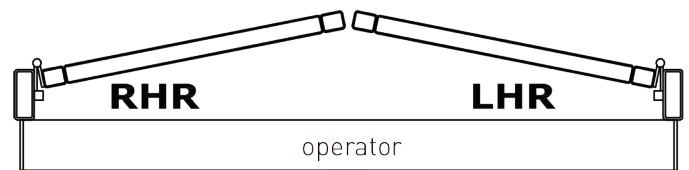
Note: Operator Handing Terminology is universal for all types of door pivot rotation. Door can be Butt Hung as shown; Continuous Hinge; Offset Pivot or Overhead Concealed Center Pivot.



LEFT HAND PUSH ARM
(OUTSWING)



RIGHT HAND PUSH ARM
(OUTSWING)



DUAL (PAIR) PUSH ARM
(OUTSWING)



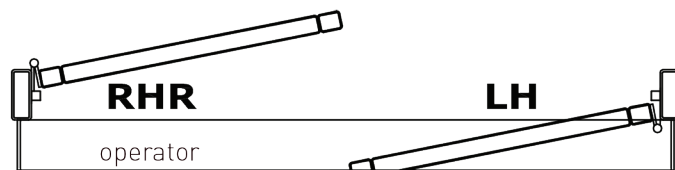
RIGHT HAND PULL TRACK
(INSWING)



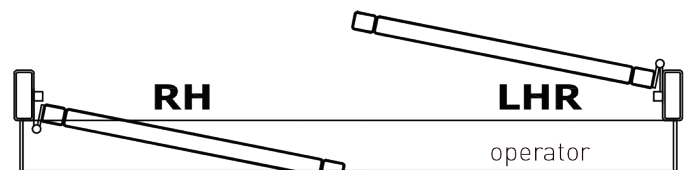
LEFT HAND PULL TRACK
(INSWING)



DUAL (PAIR) PULL TRACK
(INSWING)



LEFT HAND
DUAL (DOUBLE) EGRESS



RIGHT HAND
DUAL (DOUBLE) EGRESS

Header Sizing Guidelines

| Header Size | Door Opening Width (DOW) |
|-------------|--------------------------|
| 39" | 36" Single |
| 45" | 42" Single |
| 51" | 48" Single |
| 75" | 72" Pair |
| 87" | 84" Pair |
| 99" | 96" Pair |

HA7 Series Door Operators



Base package prices below include:

- » Two year warranty from date of shipment
- » Non-handed operator with controller
- » Push and Pull Arms
- » One piece, clear or dark bronze cover
- » Mounting hardware
- » Required decals to meet ANSI specifications

| Part # | Application | Finish | List Price |
|--------------------|--|-------------|------------|
| HA7-150 | Single, 39" header, push/pull combo with internal power supply/door stop | Clear | \$3,938.00 |
| HA7-250 | Single, 39" header, push/pull combo with internal power supply/door stop | Dark Bronze | \$3,938.00 |
| Accessories | | | |
| W7-330000831 | Push arm shaft extension 20mm/35mm kit | Black | \$65.00 |
| W7-330000832 | Pull arm shaft extension 28mm/43mm kit | Black | \$65.00 |
| W7-1026730 | Plug-In Power adaptor kit includes: ground wire, power cord, extension power cable, adaptor holder, and power adaptor (24vdc, 90w) | n/a | \$534.00 |

HA7 Trash Room Kits



Kit includes:

- » HA7 operator
- » LE Flat Scan
- » Logic Relay
- » Door Position Switch & Lock Kick

| Part # | Application | Finish | List Price |
|--------------|-------------|-------------|------------|
| HA7-150TR-LH | Left Hand | Clear | \$6,324.00 |
| HA7-150TR-RH | Right Hand | Clear | \$6,324.00 |
| HA7-250TR-LH | Left Hand | Dark Bronze | \$6,324.00 |
| HA7-250TR-RH | Right Hand | Dark Bronze | \$6,324.00 |

Power Buy Program: Buying at the quantities below awards you the additional discount off of your base operator net price. This program is product specific and cannot be combined with other product lines to reach a discount level. This program cannot be combined with other buying programs. Contact your sales rep to discuss. The discount is applied to the base price of the operator, excluding any added options.

- » 10-19 operators 3.5%
- » 20-29 operators 8.0%
- » 30-49 operators 16.4%
- » 50+ operators 20.8%

Free Freight Program: Introducing a second incentive program for you. When you order \$15,000 in HA Series product, we'll cover the freight! This program is product specific and cannot be combined with other product lines to reach the minimum threshold needed to receive.

HA8-LP Series Door Operators



NOTES:

- » See Power Buy and Free Freight program details below.
- » Upgrade prices reflect a single motor/gearbox (except Dual Egress). Estimate cost accordingly.
- » Specific part numbers in bold qualify for Quick Ship.

Base package prices below include:

- » Two year warranty from date of shipment
- » Non-handed operator with controller
- » Arm
- » One piece, clear or dark bronze cover
- » Mounting hardware
- » Required decals to meet ANSI specifications

| Unit | Application | Finish | List Price |
|----------------------------------|---|-----------------|------------|
| HA8-LP (single, 39", 45" or 51") | Push or Pull | Clear or Bronze | \$4,397.00 |
| HA8-LP (dual 75", 87", 99") | Push or Pull, Fits pair of 36", 42" or 48" doors | Clear or Bronze | \$8,794.00 |
| | Factory Upgrades | | |
| | Dual Egress Feature | Add | \$412.00 |
| | Extended Spindle 1/2" (WL-PO108-FU) | Add | \$256.00 |
| | Black finish for single units (39", 45" or 51") | Add | \$400.00 |
| | Black finish for dual units (75") | Add | \$800.00 |
| | Universal arm with extended pull track- single | Add | \$235.00 |
| | Universal arm with extended pull track- dual (fits pair of 36", 42", or 48" doors). Combo of (W5-512C and W5-551) and (W5-512B and W5-556). | Add | \$470.00 |

Power Buy Program: We're excited to continue offering our improved quantity break program. Buying at the quantities below awards you the additional discount off of your net price. **This program is not applicable with certain buying programs. Contact your sales rep for eligibility.**

- » 10-19 operators 3.5%
- » 20-29 operators 8.0%
- » 30-49 operators 16.4%
- » 50+ operators 20.8%

Free Freight Program: Introducing a second incentive program for you. When you order \$15,000 in HA Series product, we'll cover the freight! This program is product specific and cannot be combined with other the SS8200 to reach the minimum threshold needed to receive.

HA8-LP Series Door Operators

Standard Part Numbers

| Part # | Application | Finish | Header Size | List Price |
|------------------|------------------------|--------------------|-------------|-------------------|
| WL-102-39 | Left Hand Pull | Clear (CL) | 39" | \$4,397.00 |
| WL-106-39 | Left Hand Pull | Bronze (BZ) | 39" | \$4,397.00 |
| WL-102-45 | Left Hand Pull | Clear (CL) | 45" | \$4,397.00 |
| WL-106-45 | Left Hand Pull | Bronze (BZ) | 45" | \$4,397.00 |
| WL-102-51 | Left Hand Pull | Clear (CL) | 51" | \$4,397.00 |
| WL-106-51 | Left Hand Pull | Bronze (BZ) | 51" | \$4,397.00 |
| WL-104-39 | Right Hand Pull | Clear (CL) | 39" | \$4,397.00 |
| WL-108-39 | Right Hand Pull | Bronze (BZ) | 39" | \$4,397.00 |
| WL-104-45 | Right Hand Pull | Clear (CL) | 45" | \$4,397.00 |
| WL-108-45 | Right Hand Pull | Bronze (BZ) | 45" | \$4,397.00 |
| WL-104-51 | Right Hand Pull | Clear (CL) | 51" | \$4,397.00 |
| WL-108-51 | Right Hand Pull | Bronze (BZ) | 51" | \$4,397.00 |
| WL-101-39 | Push | Clear (CL) | 39" | \$4,397.00 |
| WL-105-39 | Push | Bronze (BZ) | 39" | \$4,397.00 |
| WL-101-45 | Push | Clear (CL) | 45" | \$4,397.00 |
| WL-105-45 | Push | Bronze (BZ) | 45" | \$4,397.00 |
| WL-101-51 | Push | Clear (CL) | 51" | \$4,397.00 |
| WL-105-51 | Push | Bronze (BZ) | 51" | \$4,397.00 |
| WL-101-75 | Pair Doors Push | Clear (CL) | 75" | \$8,794.00 |
| WL-105-75 | Pair Doors Push | Bronze (BZ) | 75" | \$8,794.00 |
| WL-104-75 | Pair Doors Pull | Clear (CL) | 75" | \$8,794.00 |
| WL-108-75 | Pair Doors Pull | Bronze (BZ) | 75" | \$8,794.00 |

HA8-SP Series Door Operators



NOTES:

- » See Power Buy and Free Freight program details below.
- » Upgrade prices reflect a single motor/gearbox (except Dual Egress). Estimate cost accordingly.
- » Specific part numbers in bold qualify for Quick Ship.

Base package prices below include:

- » Two year warranty from date of shipment
- » handed operator with controller
- » Arm
- » clear or dark bronze cover
- » Mounting hardware
- » Required decals to meet ANSI specifications

| Unit | Application | Finish | List Price |
|----------------------------------|---|-----------------|------------|
| HA8-SP (single, 39", 45" or 51") | Push or Pull | Clear or Bronze | \$4,834.00 |
| HA8-SP (dual 75") | Push or Pull, Fits pair of 36" doors | Clear or Bronze | \$9,668.00 |
| HA8-SP (dual 87") | Push or Pull, Fits pair of 42" doors | Clear or Bronze | \$9,668.00 |
| HA8-SP (dual 99") | Push or Pull, Fits pair of 48" doors | Clear or Bronze | \$9,668.00 |
| | Factory Upgrades | | |
| | Push and Go | Add | \$604.00 |
| | Dual Egress Feature | Add | \$412.00 |
| | Extended Spindle Shaft – 9-3/4" | Add | \$318.00 |
| | Black finish for single units (39", 45", 51") | Add | \$400.00 |
| | Black finish for dual units (75") | Add | \$800.00 |

Power Buy Program: We're excited to continue offering our improved quantity break program. Buying at the quantities below awards you the additional discount off of your net price. **This program is not applicable with certain buying programs. Contact your sales rep for eligibility.**

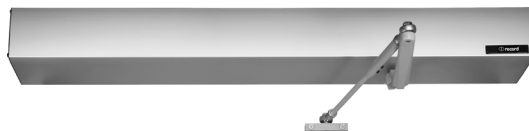
- » 10-19 operators 3.5%
- » 20-29 operators 8.0%
- » 30-49 operators 16.4%
- » 50+ operators 20.8%

Free Freight Program: Introducing a second incentive program for you. When you order \$15,000 in HA Series product, we'll cover the freight! This program is product specific and cannot be combined with the SS8200 to reach the minimum threshold needed to receive.

HA8-SP Series Door Operators Standard Part Numbers

| Part # | Application | Finish | Header Size | List Price |
|------------------|------------------------|--------------------|-------------|-------------------|
| W9-103-39 | Right Hand Push | Clear (CL) | 39" | \$4,834.00 |
| W9-107-39 | Right Hand Push | Bronze (BZ) | 39" | \$4,834.00 |
| W9-103-45 | Right Hand Push | Clear (CL) | 45" | \$4,834.00 |
| W9-107-45 | Right Hand Push | Bronze (BZ) | 45" | \$4,834.00 |
| W9-103-51 | Right Hand Push | Clear (CL) | 51" | \$4,834.00 |
| W9-107-51 | Right Hand Push | Bronze (BZ) | 51" | \$4,834.00 |
| W9-101-39 | Left Hand Push | Clear (CL) | 39" | \$4,834.00 |
| W9-105-39 | Left Hand Push | Bronze (BZ) | 39" | \$4,834.00 |
| W9-101-45 | Left Hand Push | Clear (CL) | 45" | \$4,834.00 |
| W9-105-45 | Left Hand Push | Bronze (BZ) | 45" | \$4,834.00 |
| W9-101-51 | Left Hand Push | Clear (CL) | 51" | \$4,834.00 |
| W9-105-51 | Left Hand Push | Bronze (BZ) | 51" | \$4,834.00 |
| W9-111-75 | Pair Doors Push | Clear (CL) | 75" | \$4,834.00 |
| W9-113-75 | Pair Doors Push | Bronze (BZ) | 75" | \$4,834.00 |
| W9-104-39 | Right Hand Pull | Clear (CL) | 39" | \$4,834.00 |
| W9-108-39 | Right Hand Pull | Bronze (BZ) | 39" | \$4,834.00 |
| W9-104-45 | Right Hand Pull | Clear (CL) | 45" | \$4,834.00 |
| W9-108-45 | Right Hand Pull | Bronze (BZ) | 45" | \$4,834.00 |
| W9-104-51 | Right Hand Pull | Clear (CL) | 51" | \$4,834.00 |
| W9-108-51 | Right Hand Pull | Bronze (BZ) | 51" | \$4,834.00 |
| W9-102-39 | Left Hand Pull | Clear (CL) | 39" | \$4,834.00 |
| W9-106-39 | Left Hand Pull | Bronze (BZ) | 39" | \$4,834.00 |
| W9-102-45 | Left Hand Pull | Clear (CL) | 45" | \$4,834.00 |
| W9-106-45 | Left Hand Pull | Bronze (BZ) | 45" | \$4,834.00 |
| W9-102-51 | Left Hand Pull | Clear (CL) | 51" | \$4,834.00 |
| W9-106-51 | Left Hand Pull | Bronze (BZ) | 51" | \$4,834.00 |
| W9-112-75 | Pair Doors Pull | Clear (CL) | 75" | \$9,668.00 |
| W9-114-75 | Pair Doors Pull | Bronze (BZ) | 75" | \$9,668.00 |

HA9 Series Door Operators



NOTES:

- » See Power Buy and Free Freight program details below.
- » Upgrade prices reflect a single motor/gearbox (except Dual Egress). Estimate cost accordingly.
- » Specific part numbers in bold qualify for Quick Ship.

Base package prices below include:

- » Two year warranty from date of shipment
- » Non-handed operator with controller
- » Arm
- » One piece, clear or dark bronze cover
- » Mounting hardware
- » Required decals to meet ANSI specifications

| Unit | Application | Finish | List Price |
|-------------------------------|--|-----------------|------------|
| HA9 (single, 39", 45" or 51") | Push or Pull | Clear or Bronze | \$4,650.00 |
| HA9 (dual 75", 87" or 99") | Push or Pull, Fits pair of 36", 42" or 48" doors | Clear or Bronze | \$9,300.00 |
| | Factory Upgrades | | |
| | Dual Egress Feature | Add | \$508.00 |
| | Safety Auxiliary Board (W8-860-FU) | Add | \$439.00 |
| | Battery backup (W8-855-FU) | Add | \$622.00 |
| | Spindle extension (W8-865-FU) | Add | \$131.00 |
| | Reveal Spacer Extrusion-Black (1 9/16" x 2 3/8")(W8-863-BLK-FU) | Add | \$50.00 |
| | Reveal Spacer Extrusion-Clear (1 9/16" x 2 3/8")(W8-863-SI-FU) | Add | \$50.00 |
| | Black finish for single units (39", 45" or 51") | Add | \$400.00 |
| | Black finish for dual units (75") | Add | \$800.00 |

Power Buy Program: We're excited to continue offering our improved quantity break program. Buying at the quantities below awards you the additional discount off of your net price. **This program is not applicable with certain buying programs. Contact your sales rep for eligibility.**

- » 10-19 operators 3.5%
- » 20-29 operators 8.0%
- » 30-49 operators 16.4%
- » 50+ operators 20.8%

Free Freight Program: Introducing a second incentive program for you. When you order \$15,000 in HA Series product, we'll cover the freight! This program is product specific and cannot be combined with the SS8200 to reach the minimum threshold needed to receive.

HA9 Series Door Operators Standard Part Numbers

| Part # | Application | Finish | Header Size | List Price |
|------------|-------------|-------------|-------------|------------|
| HA9-102-39 | Pull | Clear (CL) | 39" | \$4,650.00 |
| HA9-106-39 | Pull | Bronze (BZ) | 39" | \$4,650.00 |
| HA9-102-45 | Pull | Clear (CL) | 45" | \$4,650.00 |
| HA9-106-45 | Pull | Bronze (BZ) | 45" | \$4,650.00 |
| HA9-102-51 | Pull | Clear (CL) | 51" | \$4,650.00 |
| HA9-106-51 | Pull | Bronze (BZ) | 51" | \$4,650.00 |
| HA9-102-75 | Pair Pull | Clear (CL) | 75" | \$9,300.00 |
| HA9-106-75 | Pair Pull | Bronze (BZ) | 75" | \$9,300.00 |
| HA9-101-39 | Push | Clear (CL) | 39" | \$4,650.00 |
| HA9-105-39 | Push | Bronze (BZ) | 39" | \$4,650.00 |
| HA9-101-45 | Push | Clear (CL) | 45" | \$4,650.00 |
| HA9-105-45 | Push | Bronze (BZ) | 45" | \$4,650.00 |
| HA9-101-51 | Push | Clear (CL) | 51" | \$4,650.00 |
| HA9-105-51 | Push | Bronze (BZ) | 51" | \$4,650.00 |
| HA9-101-75 | Pair Push | Clear (CL) | 75" | \$9,300.00 |
| HA9-105-75 | Pair Push | Bronze (BZ) | 75" | \$9,300.00 |

SS8200/SimpleSwing Series Door Operators



NOTES:

- » A valid part number (available for standard configurations only) or an order form are required when placing an order.
- » See Power Buy program and Free Freight program details below.
- » Operators can be mounted on the push or pull side of the door.
- » Slide track arm and standard arm will work on push or pull side.
- » Operators are field reversible.
- » Standard arm- limitation: 12" reveal push, 1" reveal on pull side, pull side requires 7" clearance between door frame and opposing wall.
- » Slide track arm-limitation: 3" reveal pull side, 6" reveal push side.

Base package prices below include:

- » Two year warranty from date of shipment
- » Non-handed operator with controller
- » SimpleLink Display
- » Slide Track or Standard Arm
- » Square two piece cover up to 96" DOW
- » Mounting hardware
- » Clear or dark bronze covers
- » Required decals to meet ANSI specifications
- » Matching arms to unit finish specified

| Unit/Header Size | Application/DOW | Finish | List Price |
|---|--------------------------------------|----------------------|-------------|
| SS8200 (single, 39", 45" or 51") | Push or Pull, 36", 42", 48" DOW | Clear or Dark Bronze | \$5,734.00 |
| SS8200 (dual 63", 75", 87", 99") | Push or Pull, 60", 72", 84", 96" DOW | Clear or Dark Bronze | \$11,468.00 |
| SS8200 (dual egress 63", 75", 87", 99") | Dual Egress, 60", 72", 84", 96" DOW | Clear or Dark Bronze | \$11,825.00 |
| Factory Installed Upgrades | | | |
| | Offset Arm (single) | Add | \$320.00 |
| | Offset Arm (dual) | Add | \$640.00 |
| | Black Anodized (single) | Add | \$238.00 |
| | Black Anodized (dual) | Add | \$476.00 |
| | Battery Backup Installed (single) | Add | \$1,085.00 |
| | Battery Backup Installed (dual) | Add | \$2,170.00 |
| | Brake (single) | Add | \$1,000.00 |
| | Brake (dual) | Add | \$2,000.00 |
| | Single Operator in Paired Cover | Add | \$480.00 |

Power Buy Program: We're excited to continue offering our improved quantity break program. Buying at the quantities below awards you the additional discount off of your base operator net price. This program is product specific and cannot be combined with other product lines to reach a discount level. This program cannot be combined with other buying programs. Contact your sales rep to discuss. The discount is applied to the base price of the operator, excluding any added options.

- » 10-19 operators 3.5%
- » 20-29 operators 8.0%
- » 30-49 operators 16.4%
- » 50+ operators 20.8%

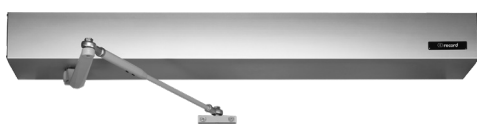
Free Freight Program: Introducing a second incentive program for you. When you order \$15,000 in SS8200 material, we'll cover the freight! This program is product specific and cannot be combined with other product lines to reach the minimum threshold needed to receive.

SS8200/SimpleSwing Series Door Operators

Standard Part Numbers

| Part # | Handing | Finish | Header/DOW | List Price |
|----------------|------------------|-------------|------------|-------------|
| SS8211C2SNN_36 | LHR Standard | Clear | 39"/36" | \$5,734.00 |
| SS8211C2SNN_42 | LHR Standard | Clear | 45"/42" | \$5,734.00 |
| SS8211C2SNN_48 | LHR Standard | Clear | 51"/48" | \$5,734.00 |
| SS8211D2SNN_36 | LHR Standard | Dark Bronze | 39"/36" | \$5,734.00 |
| SS8211D2SNN_42 | LHR Standard | Dark Bronze | 45"/42" | \$5,734.00 |
| SS8211D2SNN_48 | LHR Standard | Dark Bronze | 51"/48" | \$5,734.00 |
| SS8261C2S4S_72 | LHR-RHR Standard | Clear | 75"/72" | \$11,468.00 |
| SS8261D2S4S_72 | LHR-RHR Standard | Dark Bronze | 75"/72" | \$11,468.00 |
| SS8202C1TNN_36 | LH Track | Clear | 39"/36" | \$5,734.00 |
| SS8202C1TNN_42 | LH Track | Clear | 45"/42" | \$5,734.00 |
| SS8202C1TNN_48 | LH Track | Clear | 51"/48" | \$5,734.00 |
| SS8202D1TNN_36 | LH Track | Dark Bronze | 39"/36" | \$5,734.00 |
| SS8202D1TNN_42 | LH Track | Dark Bronze | 45"/42" | \$5,734.00 |
| SS8202D1TNN_48 | LH Track | Dark Bronze | 51"/48" | \$5,734.00 |
| SS8252C1T3T_72 | LH-RH Track | Clear | 75"/72" | \$11,468.00 |
| SS8252D1T3T_72 | LH-RH Track | Dark Bronze | 75"/72" | \$11,468.00 |

EZ36 Kits - Automate a 36" Door in One Box



NOTES

- » See Free Freight program details below.
- » Push plates also available in blue with "push to open" text by request.
- » Specific part numbers in bold qualify for Quick Ship.
- » Standard orders will ship in 3-5 business days.

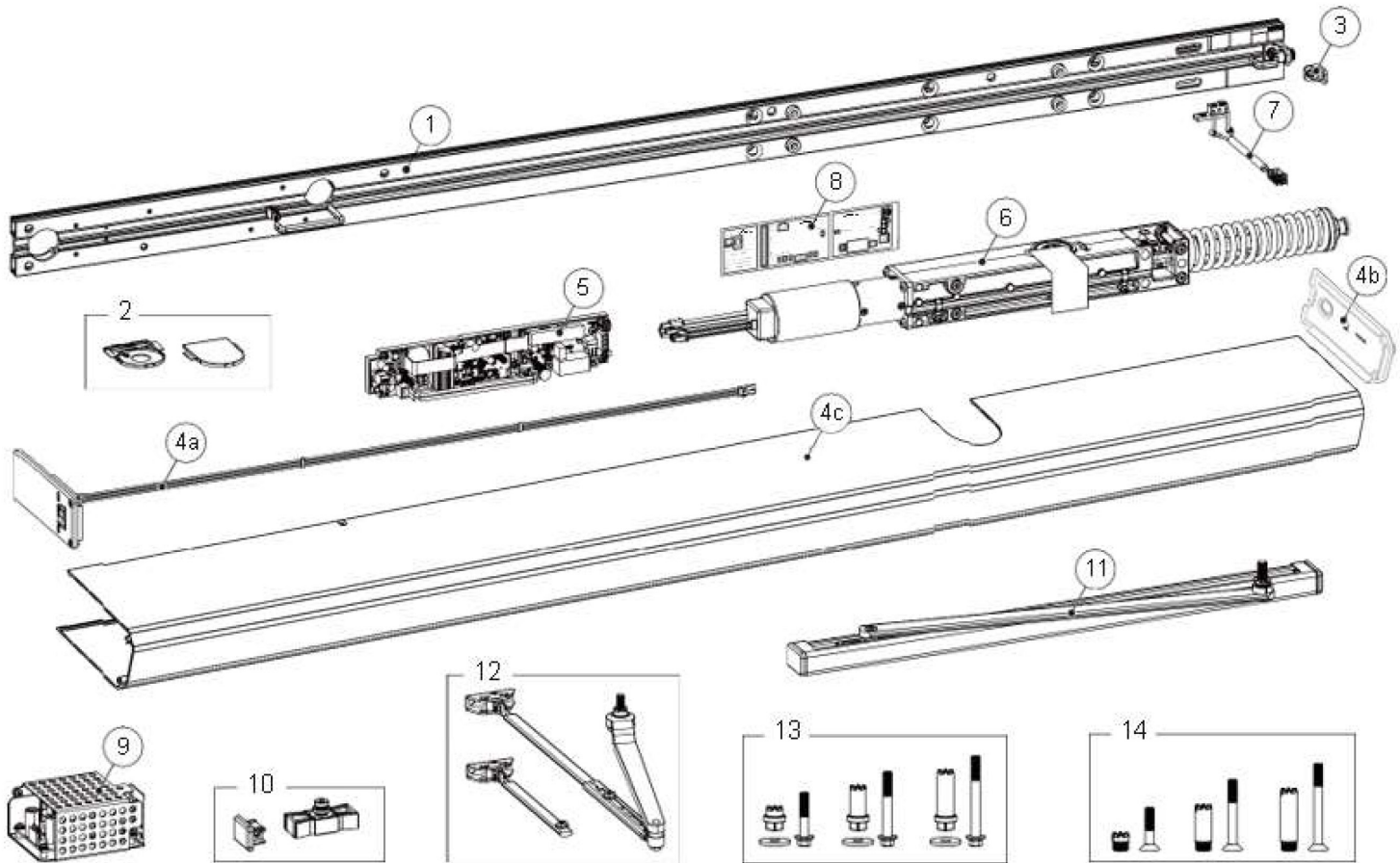
Kit includes:

- » Two year warranty from date of shipment
- » (1) HA7, HA8-LP or HA9 operator
- » (2) square 4.5" push plates
- » (2) surface mount boxes
- » (2) 900 MHz transmitters
- » (1) 900 MHz receiver
- » Required decals to meet ANSI specifications

| Part No. | Operator | Application | Finish | List Price |
|-------------------|---------------|------------------------------|-------------------------|-------------------|
| W9-200 | HA8-LP | Push | Clear (CL) | \$6,165.00 |
| W9-205 | HA8-LP | Pull (left hand) | Clear (CL) | \$6,165.00 |
| W9-210 | HA8-LP | Pull (right hand) | Clear (CL) | \$6,165.00 |
| W9-215 | HA8-LP | Universal | Clear (CL) | \$6,327.00 |
| W9-220 | HA8-LP | Push | Dark Bronze (BZ) | \$6,165.00 |
| W9-225 | HA8-LP | Pull (left hand) | Dark Bronze (BZ) | \$6,165.00 |
| W9-230 | HA8-LP | Pull (right hand) | Dark Bronze (BZ) | \$6,165.00 |
| W9-235 | HA8-LP | Universal | Dark Bronze (BZ) | \$6,327.00 |
| HA9-202CLR | HA9 | Push | Clear (CL) | \$6,198.00 |
| HA9-201CLR | HA9 | Pull | Clear (CL) | \$6,198.00 |
| HA9-202BRZ | HA9 | Push | Dark Bronze (BZ) | \$6,198.00 |
| HA9-201BRZ | HA9 | Pull | Dark Bronze (BZ) | \$6,198.00 |
| | | Factory Upgrades | | |
| | | Black finish (excluding HA7) | Add | \$400.00 |

Free Freight Program: Introducing a second incentive program for you. When you order \$15,000 in HA Series product, we'll cover the freight! This program is product specific and cannot be combined with the SS8200 to reach the minimum threshold needed to receive.

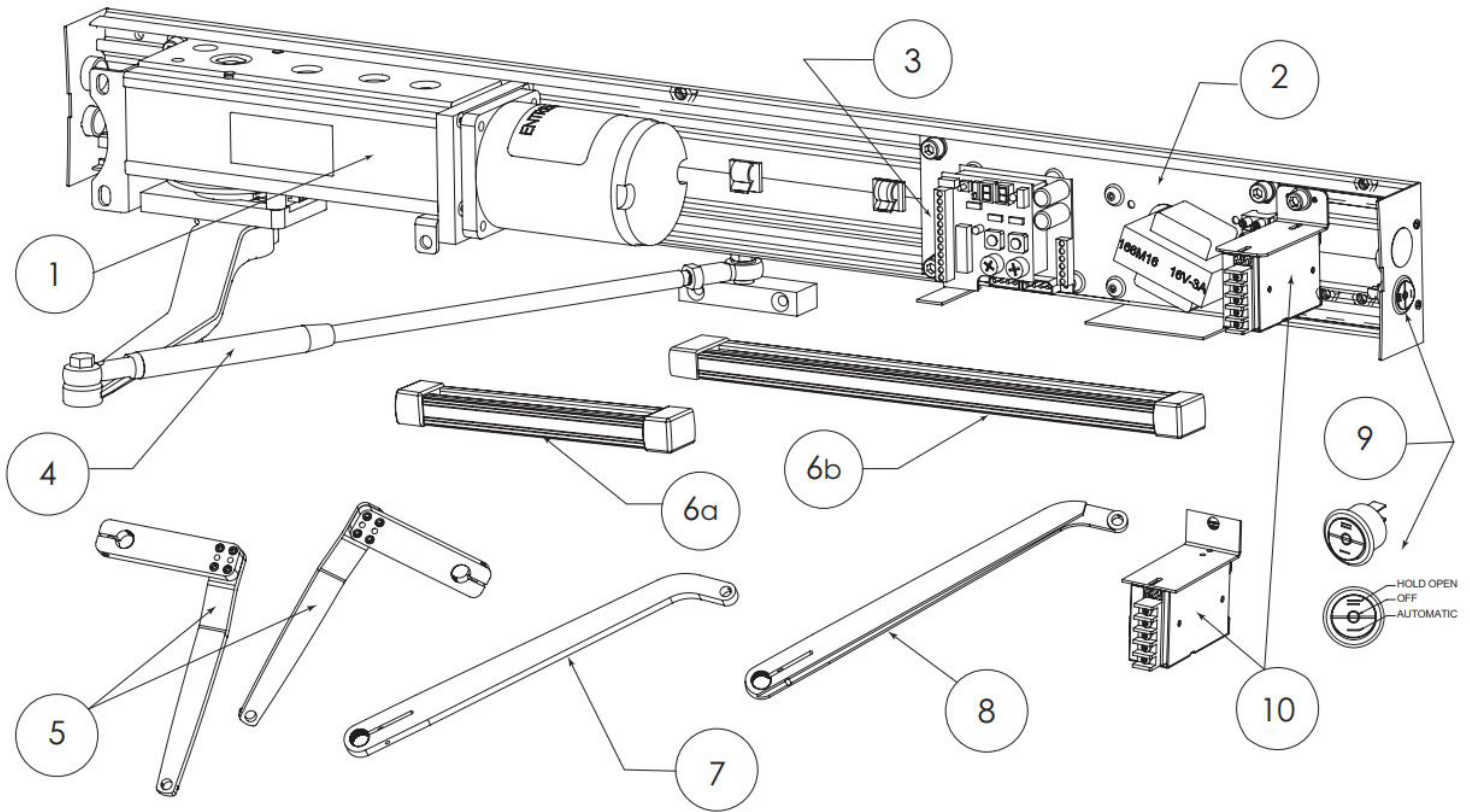
Replacement Parts - HA7



| Item | Part # | Description |
|------|----------------|--|
| 1 | W7-330001225 | back plate with power cable |
| 2 | W7-331020445BK | spindle cover kit (black) |
| | W7-331020445PD | spindle cover kit (grey) |
| 3 | W7-331019785 | bracket power plug |
| 4a | W7-331027034 | endplate with control switch (black), 88mm |
| 4b | W7-331026159 | endplate (black), 88mm |
| 4c | W7-331026149DB | cover (black), 88mm |
| | W7-331026149NA | cover (silver), 88mm |
| 5 | W7-331018537 | control unit (CU) |
| 6 | W7-330000841 | transmission unit kit |
| 7 | W7-330000829 | lock kick for push & pull |
| 8 | W7-331020035 | CU connection label |
| 9 | W7-331026784 | power supply assembly |

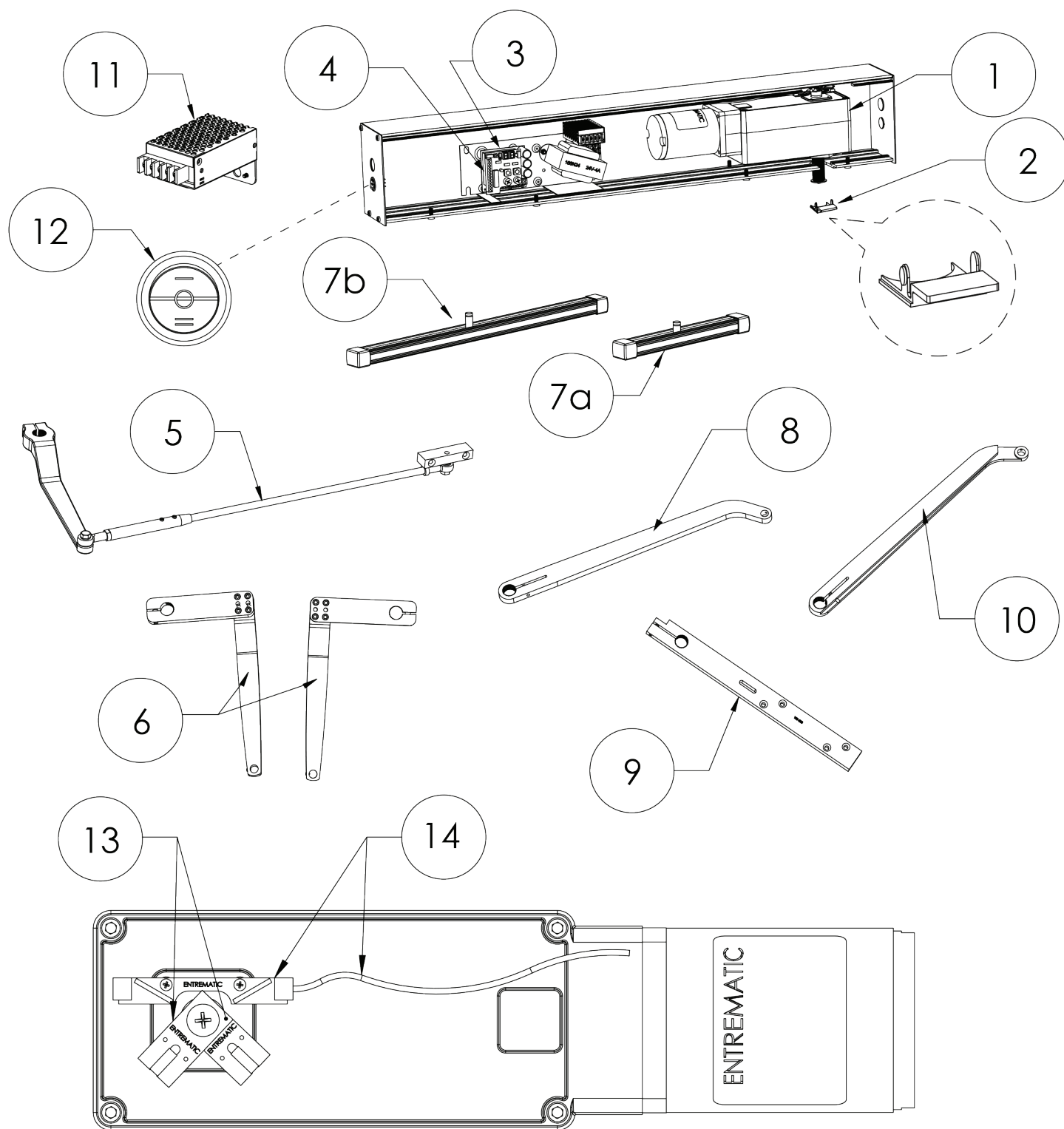
| Item | Part # | Description |
|------|----------------|---------------------------------------|
| 10 | W7-330000830BK | pull arm service kit (black) |
| | W7-330000830PD | pull arm service kit (grey) |
| 11 | W7-331020226BK | pull arm kit (black) |
| | W7-331020226PD | pull arm kit (grey) |
| 12 | W7-331020857BK | push arm kit (black) |
| | W7-331020857PD | push arm kit (grey) |
| 13 | W7-330000831BK | drive shaft kits for PUSH arm (black) |
| 14 | W7-330000832BK | drive shaft kits for PULL arm (black) |

Replacement Parts - HA8-LP



| Item | Category | Part # | Description | Item | Category | Part # | Description |
|------|-----------|----------|-------------------------|------|----------|------------------|--|
| 1 | Operators | WL-PA03 | LP Operator | 6a | Arm | W5-550 | Pull track assembly-clear |
| 2 | Controls | W7-130-1 | Digital Control Board | | | W5-555 | Pull track assembly-bronze |
| 3 | Controls | W5-422 | Fuse 3amp digital | 6b | Arms | W5-551 | Pull track assembly long-clear (univ arm) |
| 4 | Arms | W7-200 | complete push arm-clear | | | W5-556 | Pull track assembly long-bronze (univ arm) |
| 5 | Arms | W5-506C | Z Arm-RH-Clear | 7 | Arms | W5-512C | Universal Arm-clear |
| | | W5-505C | Z Arm-LH-Clear | | | W5-512B | Universal Arm-bronze |
| | | W5-506B | Z Arm-RH-Bronze | 9 | Misc | WL-Rocker switch | On-Off-Hold Open 3-position switch |
| | | W5-505B | Z Arm-LH-Bronze | | | | |
| | | W5-508C | Extended Z Arm-RH-Clear | 10 | Misc | WL-PWRKIT | RS-25-24 Power Supply Kit |
| | | W5-507C | Extended Z Arm-LH-Clear | | | | |
| | | W5-508B | Extended Z Arm-RH-Black | | | | |
| | | W5-507B | Extended Z Arm-LH-Black | | | | |

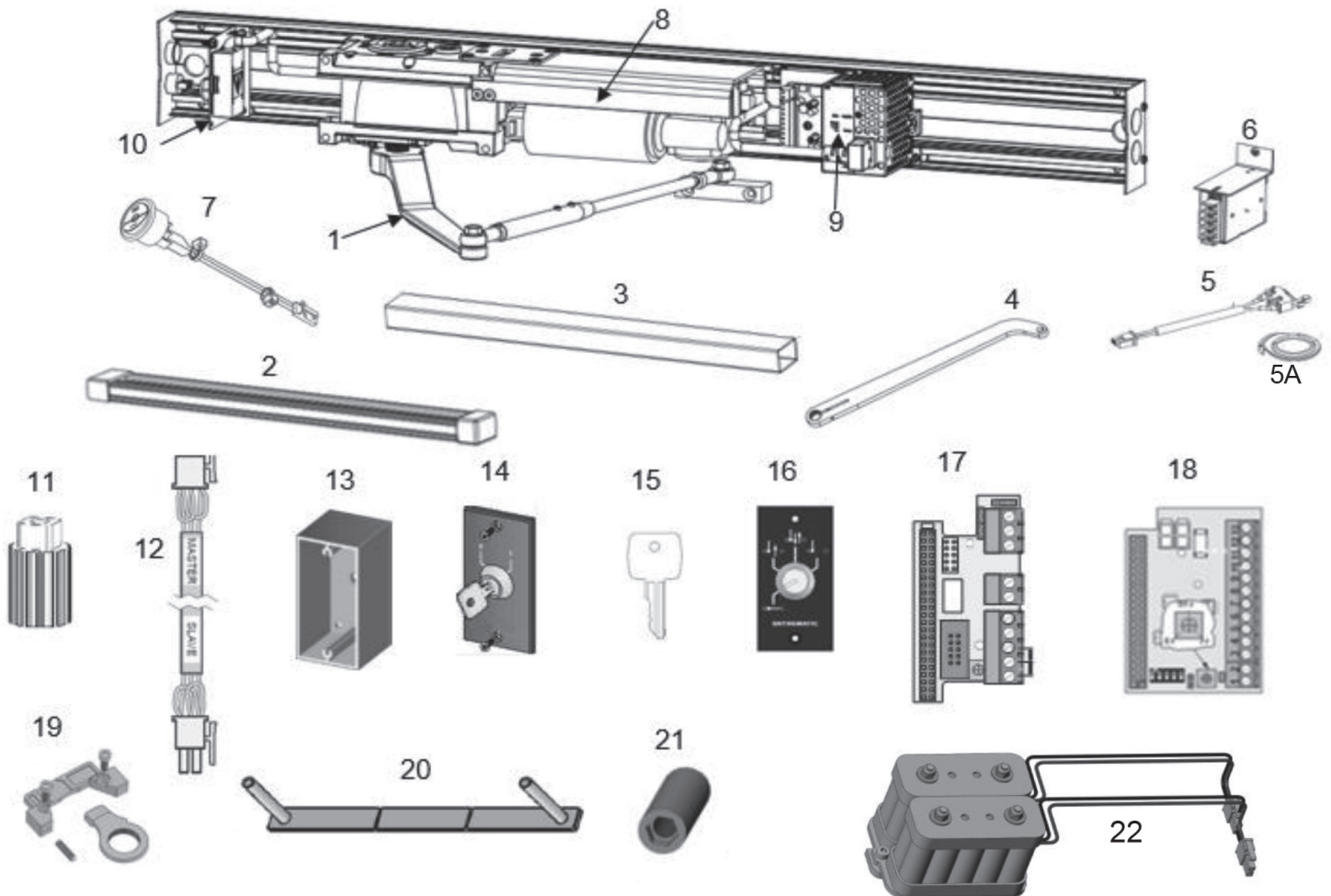
Replacement Parts - HA8-SP



Replacement Parts - HA8-SP

| Item | Category | Part # | Description | Item | Category | Part # | Description |
|------|---------------|----------|-------------------------------|------|--|--------------------------|---|
| 1 | Operators | W7-105L | LH 1/8 hp operator | 7a | Pull Arm Track - short (for z arm) | W5-550 | Pull track assembly - clear |
| | | W7-105R | RH 1/8 hp operator | | | W5-555 | Pull track assembly - bronze |
| | | W7-106L | LH 1/8 hp, push & go operator | 7b | Pull Arm Track - long (for Universal/ Center Spindle) | W5-551 | Pull track assembly long-clear (for Univ/Center Spindle) |
| | | W7-106R | RH 1/8 hp, push & go operator | | | W5-556 | Pull track assembly long-bronze (for Univ/Center Spindle) |
| 2 | Header Cap | W5-557 | Header Plastic Cap | 8 | Universal Arm | W5-512C | Universal Arm-clear |
| 3 | Control Board | W7-130-1 | HA Digital Control Board | | | W5-512B | Universal Arm-bronze |
| 4 | Fuses | W5-422 | 3amp fuse (HA8) | 11 | AUX Power Supply Kit (optional) | WL- PWRKIT | RS-25-24 Power supply kit |
| | | W5-430 | 4amp fush (FA8) | | | | |
| 5 | Push Arm | W7-200 | complete push arm-clear | 12 | Rocker Switch | WL- ROCKER- SWITCH | On/off/hold open 3 position switch |
| | | W7-205 | complete push arm-bronze | | | | |
| | | W5-502C | cast portion only- clear | 13 | Magnet Sets | W5-416 | magnet set, detects back check and latch check phases |
| | | W5-502B | cast portion only-bronze | | | | |
| 6 | Z Arm (Pull) | W5-506C | Z Arm-RH-Clear | 14 | Reed Switch | W5-415 | reed switch & harness; com- municates to control board the position of door |
| | | W5-505C | Z Arm-LH-Clear | | | | |
| | | W5-506B | Z Arm-RH-Bronze | 15 | Harness Cable | W5-415-2 | Communicates to control board the position of door |
| | | W5-505B | Z Arm-LH-Bronze | | | | |
| | | W5-508C | Ext Z Arm-RH-Clear | | | | |
| | | W5-508B | Ext Z Arm-RH-Black | | | | |
| | | W5-507C | Ext Z Arm-LH-Clear | | | | |
| | | W5-507B | Ext Z Arm-LH-Black | | | | |
| 5 | Arms | W5-506C | Z Arm-RH-Clear | | | | |
| | | W5-505C | Z Arm-LH-Clear | | | | |
| | | W5-506B | Z Arm-RH-Bronze | | | | |
| | | W5-505B | Z Arm-LH-Bronze | | | | |
| | | W5-508C | Extended Z Arm-RH-Clear | | | | |
| | | W5-507C | Extended Z Arm-LH-Clear | | | | |
| | | W5-508B | Extended Z Arm-RH-Black | | | | |
| | | W5-507B | Extended Z Arm-LH-Black | | | | |

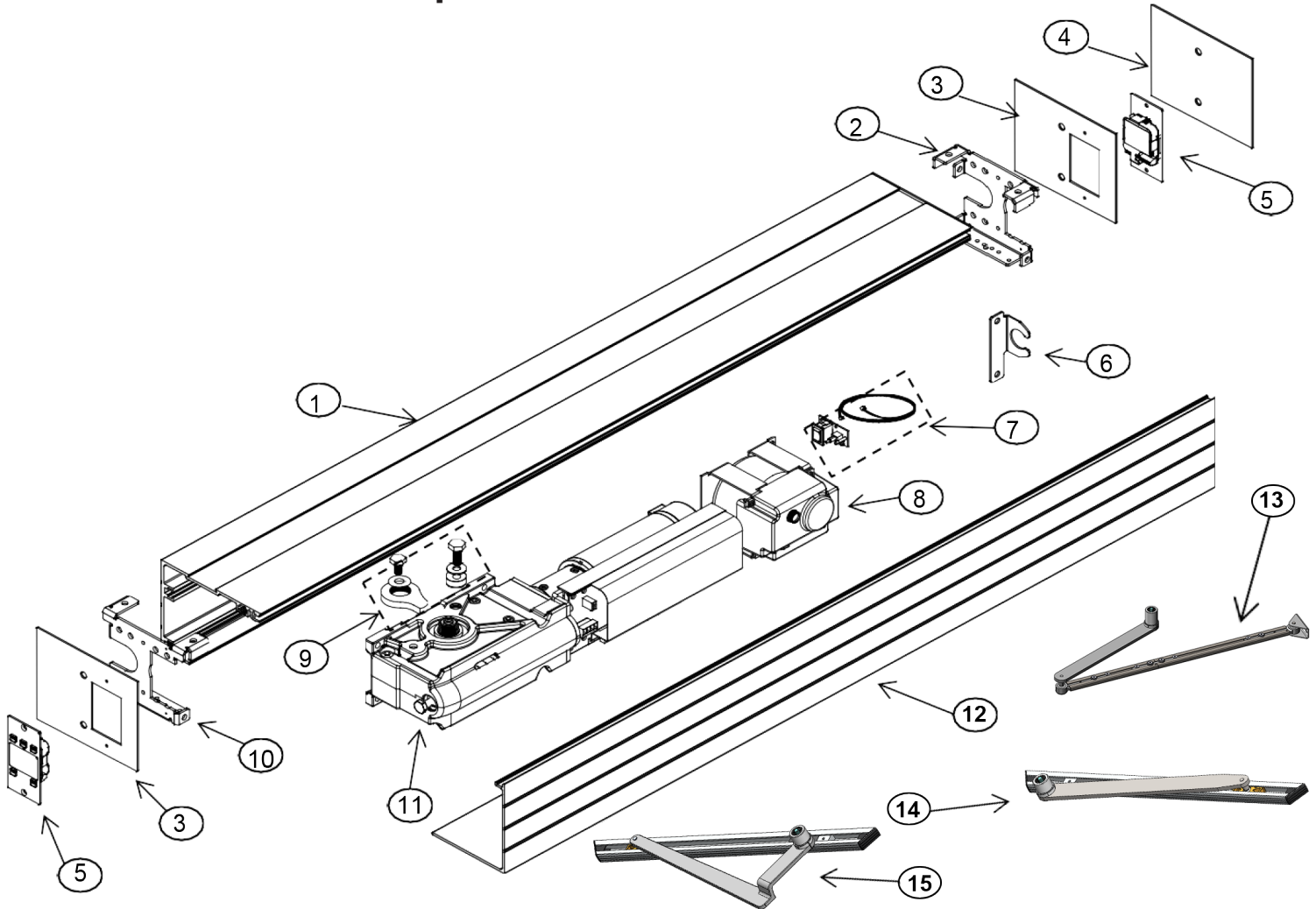
Replacement Parts - HA9



Replacement Parts - HA9

| Item | Category | Part # | Description | Item | Category | Part # | Description |
|------|--|------------|--------------------------------------|------|------------------------|--------|------------------------------------|
| 1 | Push Arm | W7-200 | complete push arm-clear (17.5" rod) | 7 | Rocker Switch | W8-804 | on/off/hold open 3-position switch |
| | | W7-205 | complete push arm-bronze (17.5" rod) | 8 | Motor/Gearbox | W8-801 | motor/gearbox kit |
| | | W5-502C | cast portion- clear | 9 | Controls | W8-802 | HA9 Controller |
| | | W5-502B | cast portion- bronze | 10 | Conduit | W8-803 | Conduit bracket kit |
| | | W5-500C | 22" extended rod- clear | 11 | Shaft Adaptor | W8-805 | Shaft adaptor |
| | | W5-500B | 22" extended rod-bronze | 12 | Sync Cable | W8-850 | sync cable for pair units |
| 2 | Pull Arm Track-Long | W5-551 | pull track assembly long-clear | 13 | Program Selector | W8-856 | surface mount box |
| | | W5-556 | pull track assembly long-bronze | 14 | | W8-857 | 2 pos., psk-2 |
| 3 | Reveal Spacer Extrusion (1-9/16" x 2-3/8") | W8-863-BLK | Spacer Assy - black | 15 | | W8-858 | spare key psk/ps-4c |
| | | W8-863-SL | Spacer Assy- silver | 16 | | W8-859 | 4 pos, w/ key PS-4C |
| 4 | Pull Arm | W5-512C | pull arm-clear | 17 | Extension Units | W8-860 | EXU-SA |
| | | W5-512B | pull arm-bronze | 18 | | W8-861 | EXU-SI |
| 5 | Micro Switch Kit | W8-852 | lock kick switch & cam (includes 5A) | 19 | Stop Arm Kit | W8-851 | Stop Arm Kit |
| 5A | Lock Kick | W8-864 | lock kick cam | 20 | Lock Spacer Kit | W8-853 | Lock Spacer Kit |
| 6 | Power Supply Kit | WL-PWRKIT | RS-25-24 power supply kit | 21 | Allen Key Head Nut Kit | W8-854 | Allen Key Head Nut Kit |
| | | | | 22 | Battery backup | W8-855 | Optional battery backup |

Replacement Parts - SS8200



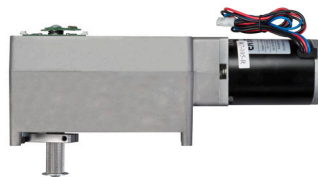
| Item | Part # | Description | Item | Part # | Description |
|------|---------------|---|------|---------------|--|
| 1 | 5-85-4003-CL | Header, Clear | 10 | 202-005121578 | Bracket, Header to Jamb, BDE-D, SS8200, LH |
| | 5-85-4003-DB | Header, Dark Bronze | | | |
| 2 | 202-005121579 | Bracket, Header to Jamb, BDE-D, SS8200, RH | 11 | 9-80-0101 | Drive Module w/ Control, SS8200 |
| 3 | 202-005121570 | End Cap, Header, 8000, BDE-D Cutout, SS8200 | 12 | 5-85-4004-CL | Cover, Clear |
| 4 | 4-85-1011 | End Cap, Header (blank) | | 5-85-4004-DB | Cover, Dark Bronze |
| 5 | 9-99-1321 | Control Module, Display | 13 | 202-005816400 | Standard Arm Assembly, Clear |
| 6 | 4-51-1004 | Bracket, Conduit Anchor | | 202-005816402 | Standard Arm Assembly, Dk Bronze |
| 7 | 9-80-0106 | Kit, Rocker Switch Assembly w/ Cable | 14 | 102-127816028 | Track Arm Assembly, Clear |
| 8 | 9-80-0102 | Power Supply | | 102-127816110 | Track Arm Assembly, Dk Bronze |
| 9 | 9-80-0103 | Kit, Hard Stop | 15 | 102-127816078 | Offset Arm Assembly, Clear (LH) |
| | | | | 102-127816111 | Offset Arm Assembly, Dk Bronze (LH) |
| | | | | 102-127816079 | Offset Arm Assembly, Clear (RH) |
| | | | | 102-127816112 | Offset Arm Assembly, Dk Bronze (RH) |

Replacement – Spare Parts



Controls

| Part No. | Description | List Price |
|--------------|---|------------|
| W7-331018537 | HA7 Control Unit | \$1,061.00 |
| W8-802 | HA9 Controller | \$1,504.00 |
| W7-130-1 | Digital Control Board for SP & LP with Universal Mounting Bracket | \$757.00 |
| 9-80-0101 | SS8200 Drive Module with Control | \$4,212.00 |
| 9-99-1321 | SS8200 Control Module Display | \$748.00 |
| W5-422 | 3 Amp Fuses – Std Controls, Long, Digital (6 pack) | \$43.00 |



Operators

| Part No. | Description | List Price |
|--------------|--|------------|
| W7-330000841 | HA7 Transmission Unit | \$1,005.00 |
| W8-801 | HA9 Motor/Gearbox | \$3,081.00 |
| WL-PA03 | HA8-LP Operator – Non-Handed with Standard Spring | \$2,150.00 |
| W7-105L | HA8-SP Operator with standard spring (left hand) (fits SP models after 12/1/17) | \$2,429.00 |
| W7-105R | HA8-SP Operator with standard spring (right hand) (fits SP models after 12/1/17) | \$2,429.00 |



Arms

| Part No. | Description | List Price |
|----------|---|------------|
| W7-200 | Push Arm Complete -Clear (up to 14" reveal) | \$520.00 |
| W7-205 | Push Arm Complete - Bronze (up to 14" reveal) | \$520.00 |
| W5-502B | Push Arm, Main Arm Only- Bronze | \$254.00 |
| W5-502C | Push Arm, Main Arm Only - Clear | \$254.00 |
| W5-505B | Z/Pull Arm Left - Bronze (for complete assembly order track below) (4" reveal) | \$455.00 |
| W5-506B | Z/Pull Arm Right - Bronze (for complete assembly order track below) (4" reveal) | \$455.00 |

| | | |
|----------------|---|------------|
| W5-555 | Pull Arm Track Assembly (11-3/8" w/ endcaps) for 90 Degree Arm - Bronze | \$122.00 |
| W5-505C | Z/Pull Arm Left - Clear (for complete assembly order track below) (4" reveal) | \$455.00 |
| W5-506C | Z/Pull Arm Right-Clear (for complete assembly order track below) (4" reveal) | \$455.00 |
| W5-550 | Pull Arm Track Assembly (11-3/8" w/endcaps) for 90 Degree Arm - Clear | \$122.00 |
| W5-512B | Universal Arm - Bronze (for complete assy order track below) (4" reveal) | \$410.00 |
| W5-512C | Universal Arm - Clear (for complete assembly order track below) (4" reveal) | \$410.00 |
| W5-556 | Pull Arm Track Assembly (22") for Universal Arm - Bronze | \$187.00 |
| W5-551 | Pull Arm Track Assembly (22") for Universal Arm - Clear | \$187.00 |
| W5-500C | Extended Push Arm Rod (up to 18" reveal) (additional) - Clear | \$111.00 |
| W5-500B | Extended Push Arm Rod (up to 18" reveal) (additional) - Bronze | \$111.00 |
| W5-507C | Extended Pull Arm for Left Hand (up to 8" reveal) - Clear | \$345.00 |
| W5-507B | Extended Pull Arm for Left Hand (up to 8" reveal) - Black | \$345.00 |
| W5-508C | Extended Pull Arm for Right Hand (up to 8" reveal) - Clear | \$345.00 |
| W5-508B | Extended Pull Arm for Right Hand (up to 8" reveal) - Black | \$345.00 |
| W7-330000830BK | HA7 Pull Arm Service Kit - Black | \$36.00 |
| W7-330000830PD | HA7 Pull Arm Service Kit - Grey | \$36.00 |
| W7-331020226BK | HA7 Pull Arm Kit - Black | \$132.00 |
| W7-331020226PD | HA7 Pull Arm Kit - Grey | \$132.00 |
| W7-331020857BK | HA7 Push Arm Kit - Black | \$164.00 |
| W7-331020857PD | HA7 Push Arm Kit - Grey | \$164.00 |
| W7-330000831BK | HA7 Drive Shaft kits for PUSH arm (black) | \$76.00 |
| W7-330000832BK | HA7 drive shaft kits for PULL arm (black) | \$76.00 |
| 202-005816400 | SS8200 Standard Arm Assembly - Clear | \$707.00 |
| 202-005816402 | SS8200 Standard Arm Assembly - Dark Bronze | \$844.00 |
| 102-127816028 | SS8200 Track Arm Assembly - Clear | \$1,090.00 |
| 102-127816110 | SS8200 Track Arm Assembly - Dark Bronze | \$1,094.00 |
| 102-127816078 | SS8200 Offset Arm Assembly - Clear (LH) | \$1,090.00 |
| 102-127816111 | SS8200 Offset Arm Assembly - Dark Bronze (LH) | \$1,094.00 |
| 102-127816079 | SS8200 Offset Arm Assembly - Clear (RH) | \$1,090.00 |
| 102-127816112 | SS8200 Offset Arm Assembly - Dark Bronze (RH) | \$1,094.00 |


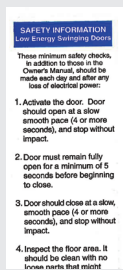


Miscellaneous

| Part No. | Description | List Price |
|-------------|---|------------|
| WL-P0108 | HA8-LP Extended Spindle Shaft (1-1/2" Extension) | \$271.00 |
| WL-P0109 | HA8-LP Extended Spindle Shaft (3" Extension) | \$271.00 |
| W8-803 | Conduit Bracket Assembly for HA9 | \$152.00 |
| W8-850 | Sync Cable for HA9 pair operators | \$154.00 |
| W8-851 | Door Stop with Stop Block Kit for HA9 | \$152.00 |
| W8-852 | Micro Switch Kit with cam for HA9 | \$79.00 |
| W8-864 | Lock Kick Cam | \$16.00 |
| W8-853 | Lock Spacer Kit | \$17.00 |
| W8-854 | Allen Key Head Nut Kit | \$9.00 |
| W8-855 | Battery Backup for HA9 | \$659.00 |
| W8-805 | Shaft Adaptor for HA9 | \$100.00 |
| W8-860 | EXU-SA (safety auxiliary board for HA9) | \$465.00 |
| W8-861 | EXU-SI (security auxiliary board for HA9) | \$619.00 |
| W8-863-BLK | Reveal Spacer Assembly - black (1 9/16"x 2 3/8") | \$53.00 |
| W8-863-SL | Reveal Spacer Assembly - silver (1 9/16"x 2 3/8") | \$53.00 |
| W5-415 | Reed Switch for SP | \$122.00 |
| WL-P0068 | Reed Switch for LP | \$122.00 |
| W5-415-1 | Reed Switch Harness (both HA Standard and Low Profile) | \$34.00 |
| W5-415-2 | Reed Switch Harness Extension (both HA standard and low profile) | \$47.00 |
| W5-416 | Reed Switch Magnets for SP (Back Check) | \$34.00 |
| W5-409 | On/Off/Hold Open Switch (for SP and FA units prior to 11/30/17) | \$100.00 |
| WL-ROCKER | 3-Way Rocker Switch (On/Off/Hold Open for SP & LP units) | \$28.00 |
| W8-804 | 3-Way Rocker Switch (On/Off/Hold Open, 3-position switch for HA9) | \$62.00 |
| W8-856 | Surface Mount Box Program Selector | \$48.00 |
| W8-857 | Program Selector, 2 position, PSK-2 | \$163.00 |
| W8-858 | Spare Key PSK/PS-4C | \$20.00 |
| W8-859 | Program Selector, 4 position w/ key PS-4C | \$163.00 |
| 8100-PWRKIT | 24 VDC-1.1 amp Aux Power Supply Kit with mounting hardware for HA, SS, and 8100 units | \$592.00 |
| W5-528C | Aluminum reinforcement bracket for aluminum storefronts where no backing exists (clear) | \$160.00 |
| W5-528B | Aluminum reinforcement bracket for aluminum storefronts where no backing exists (black) | \$160.00 |

| Part No. | Description | List Price |
|----------------|---|------------|
| W7-331020157 | HA7 Ground Wire (for use with HA7-100 or HA7-200) | \$22.00 |
| W7-330001225 | HA7 Back Plate with Power Cable (for use with HA7-150 or HA7-250) | \$62.00 |
| W7-330000828 | HA7 Back Plate with Power Cable (for use with HA7-100 or HA7-200) | \$62.00 |
| W7-331020445BK | HA7 Spindle Cover Kit (black) | \$12.00 |
| W7-331020445PD | HA7 Spindle Cover Kit (grey) | \$12.00 |
| W7-331019785 | HA7 Bracket Power Plug | \$8.00 |
| W7-331027034 | HA7 Endplate with Control Switch (black), 88mm | \$48.00 |
| W7-331020704BK | HA7 Endplate with Control Switch (black) (for use with HA7-100 or HA7-200) | \$48.00 |
| W7-331026159 | HA7 Endplate (black), 88mm | \$22.00 |
| W7-331020393BK | HA7 Endplate (black) (for use with HA7-100 or HA7-200) | \$22.00 |
| W7-330000829 | HA7 Lock Kick for Push & Pull | \$45.00 |
| W7-331020396DB | HA7 Cover (dark bronze) (for use with HA7-200) | \$55.00 |
| W7-331026149DB | HA7 Cover (dark bronze) | \$55.00 |
| W7-331020396NA | HA7 Cover (silver) (for use with HA7-100) | \$55.00 |
| W7-331026149NA | HA7 Cover (silver) | \$55.00 |
| W7-331018859 | HA7 Power Cord (for use with HA7-100 or HA7-200) | \$28.00 |
| W7-331703711 | HA7 Power Adaptor (for use with HA7-100 or HA7-200) | \$140.00 |
| W7-331020293 | HA7 Power Box Adaptor Kit (internal components only, box not included) (for use with HA7-100 or HA7-200) | \$250.00 |
| W7-1026730 | HA7 Plug-In Power Adaptor Kit (for use with HA7-150 or HA7-250) | \$254.00 |
| W7-330001207 | HA7 Doorstop Kit - Pull (for use with HA7-100 and HA7-200) | \$55.00 |
| W7-1025017 | HA7 Doorstop Kit - Push (for use with HA7-100 and HA7-200) | \$55.00 |
| 5-85-4003-CL | SS8200 Header - Clear | \$72.00 |
| 5-85-4003-DB | SS8200 Header - Dark Bronze | \$76.00 |
| 202-005121579 | SS8200 Bracket, Header to Jamb, BDE-D, RH | \$36.00 |
| 202-005121578 | SS8200 Bracket, Header to Jamb BDE-D, LH | \$36.00 |
| 202-005121570 | SS8200 End Cap, Header with BDE-D Cut-Out | \$43.00 |
| 4-85-1011 | SS8200 End Cap, Header (blank) | \$32.00 |
| 4-51-1004 | SS8200 Bracket, Conduit Anchor | \$14.00 |
| 9-80-0106 | SS8200 Rocker Switch Assembly w/ Cable | \$257.00 |
| 9-80-0102 | SS8200 Power Supply | \$923.00 |
| 9-80-0103 | SS8200 Hard Stop Kit | \$270.00 |
| 5-85-4004-CL | SS8200 Cover - Clear | \$37.00 |
| 5-85-4004-DB | SS8200 Cover - Dark Bronze | \$39.00 |

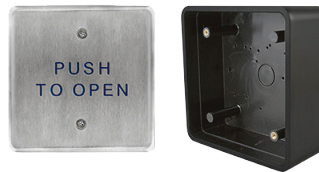
Decals

| Part No. | Description | Image | List Price |
|----------|---|--|------------|
| W5-628 | Caution Automatic Door/Activate Switch to Operate combo decal |  | \$28.00 |
| W5-626 | Record logo "Dome" label | | \$21.00 |
| W5-625 | Low Energy AAADM Decal |  | \$21.00 |

Notes:

- » Replacement Parts Warranty. Limited 1 Year from Ship Date. See Warranty Statement.
- » \$50 Minimum order required.
- » 45% Restocking fee.
- » \$15 drop ship fee.
- » Products listed in bold qualify for the Quick Ship Program. See program details on page 6.

- » Record offers the following activation and accessories to compliment our product lines.
- » Sensors can be found in our Parts Price list, reach out to your representative for assistance.



ACTIVATION - Push Plates

| Part # | Description | List Price |
|---------------|--|------------|
| 9-61-0067 | 1.5" x 4.75" BEA Jamb Plate "Push To Open" Text Only | \$128.00 |
| 202-005118914 | 1.5" x 4.75" BEA Jamb Plate "Push To Open" Text & Handicap Logo | \$128.00 |
| 9-61-0004 | 1.5" x 4.75" BEA Jamb Plate Baby Carriage & Handicap Logo | \$128.00 |
| 202-00518912 | 1.5" x 4.75" BEA Black Jamb Push Plate Mounting Box | \$57.00 |
| W6-107 | 4.5" BEA SQ Blue Push Plate "Push To Open" Text Only | \$188.00 |
| W6-108 | 4.5" BEA SQ SS Push Plate "Push To Open" Text Only | \$188.00 |
| 9-61-0045 | 4.5" BEA SQ SS Push Plate "Push To Open" Text & Handicap Logo | \$188.00 |
| 202-005118910 | 4.5" BEA Black SQ Push Plate Surface Mounting Box | \$79.00 |
| 202-005124243 | 4.5"x4.5" BEA Black SQ Push Plate Flush Mounting Box | \$98.00 |
| 9-61-0068 | 4.75" BEA SQ SS Push Plate "Push To Open" Text Only | \$187.00 |
| W6-110 | 4.75" BEA SQ SS Push Plate Handicap Logo Only | \$188.00 |
| 9-61-0069 | 4.75" BEA SQ SS Push Plate "Push To Open" Text & Handicap Logo | \$187.00 |
| 9-61-0001 | 4.75" BEA SQ SS Vestibule Push Plate "Push To Open" text & Handicap Logo | \$336.00 |
| W6-111 | 4.75" x 4.75" BEA Black SQ Push Plate Mounting Box | \$79.00 |
| 9-61-0075 | 4.75" x 4.75" BEA Black Weather Ring | \$26.00 |
| W6-114 | 6" BEA Round SS Push Plate "Push To Open" Text & Handicap Logo | \$215.00 |
| W6-115 | 6" BEA Round SS Push Plate Handicap Logo Only | \$231.00 |
| W6-115-2 | 6" BEA Black Round Weather Ring | \$26.00 |
| W6-116 | 6" BEA Black Round Push Plate Mounting Box | \$98.00 |
| 9-61-0062 | 36" BEA High-Low SS Push Plate w/ Integrated 900Mhz Wireless "Push To Open" Text & Handicap Logo | \$1,409.00 |
| W6-131 | 36" BEA High-Low SS Push Plate Hard-Wired "Push To Open" Text & Handicap Logo | \$1,409.00 |
| W6-159 | 1.5" x 4.75" BEA Jamb Push Plate Package - 900Mhz "Push To Open" Text Only | \$602.00 |
| 202-003124834 | 4.75" BEA SQ SS Vestibule Push Plate Pkg - 900 Mhz Wireless "Push To Open" Text & Handicap Logo | \$1,492.00 |

| | | |
|---------------|--|----------|
| W6-133 | 4.5" BEA SQ SS Push Plate Package - 900 Mhz Wireless "Push To Open" Text Only | \$844.00 |
| W6-134 | 4.5" BEA SQ Blue Push Plate Package - 900 Mhz Wireless "Push To Open" Text Only | \$844.00 |
| 202-003124835 | 4.5" BEA SQ SS Push Plate Package - 900 Mhz Wireless "Push To Open" Text & Handicap Logo | \$844.00 |



ACTIVATION - Touchless

| Part # | Description | List Price |
|---------------|---|------------|
| W5-670 | Wave To Open Single Switch - Single and Double Gang Faceplates Included | \$260.00 |
| 9-61-0066 | 6" BEA Round Black MS31 "Wave To Open" Text & Hand Logo | \$714.00 |
| 202-005118907 | BEA Black Single & Double Gang MS31 "Wave To Open" Text & Hand Logo | \$717.00 |
| 202-005118908 | BEA Gray Single & Double Gang MS31 "Wave To Open" Text & Hand Logo | \$717.00 |
| 202-003122353 | BEA SS Jamb Mounted MS41 "Wave To Open" Text & hand Logo | \$723.00 |
| 202-005125437 | BEA SS Single Gang MS41 "Wave To Open" Text & Hand Logo | \$735.00 |
| 202-005125438 | BEA SS Double Gang MS41 "Wave To Open" Text & Hand Logo | \$770.00 |
| 202-003128082 | BEA SS Single Gang Battery-Powered MS51 "Wave To Open" Text & Hand Logo | \$1,218.00 |



Accessories

| Part # | Description | List Price |
|---------------|---|------------|
| 202-005125285 | BEA Single Occupancy Restroom Kit | \$711.00 |
| W6-148 | BEA Emergency Add-On Kit | \$1,208.00 |
| W6-160 | BEA Trash Room Accessory Kit - Left Hand | \$1,399.00 |
| W6-165 | BEA Trash Room Accessory Kit - Right Hand | \$1,399.00 |
| 202-005122379 | BEA Programmable 3-Relay Logic Module | \$304.00 |
| 202-005118899 | BEA Bollard Mounting Post, Silver | \$817.00 |
| 202-005118900 | BEA Bollard Mounting Post, Black | \$817.00 |
| 202-005118901 | BEA Bollard Mounting Post, Dark Bronze | \$817.00 |
| 9-61-0072 | BEA 900 Mhz Push Button Transmitter | \$166.00 |
| 9-61-0070 | BEA 900 Mhz Push Button Receiver | \$226.00 |
| P-10TD900HH1 | BEA 900 Mhz Hand Held Fob | \$166.00 |

Record-USA
4324 Phil Hargett Ct.
Monroe, NC 28110
PO Box 3099
Monroe, NC 28111-3099
P +1 704 289 9212
F +1 704 289 2024
info@recorddoors.com
www.recorddoors.com

Part of ASSA ABLOY