

# Record USA Low Energy Products Price List

List Pricing effective February 1, 2026 (Rev 1)



## Table of Contents

<b>Company Contacts</b>	4
<b>Manufacturers Rep Agencies</b>	5
<b>Terms and Conditions &amp; Quick Ship Program</b>	6
<b>Handling Terminology</b>	7
<b>HA7</b>	8
<b>HA8-LP</b>	9
<b>HA8-SP</b>	11
<b>HA9</b>	13
<b>SS8200 (SimpleSwing)</b>	15
<b>EZ36</b>	17
<b>Exploded Views</b>	
HA7	18
HA8-LP	19
HA8-SP	20
HA9	22
SS8200	24
<b>Spare Parts Pricing</b>	
Controls	25
Operators/Motor Gearboxes	25
Arms	25
Miscellaneous Parts	27
Decals	29
<b>Accessories &amp; Activation Pricing</b>	
Activation	30
Accessories	31

This price list supersedes and cancels all previous price lists. Prices shown are subject to change without notice. Login to the distributor area for most current revision.

## Record USA Inc.

4324 Phil Hargett Rd.  
Monroe, NC 28110  
704 289 9212  
www.recorddoors.us

## Inside Sales Team

Mark Dugo  
Vice President of Sales  
704 292 5373  
mark.dugo@recorddoors.com

Blue Houser  
Vice President of Business Development  
803 804 3768  
blue.houser@recorddoors.com

Misty Kohnle  
Sales Operations & Analytics Manager  
704 290 0223  
misty.kohnle@recorddoors.com

Missy Laney  
National Channel Sales Manager  
Phone: 704 290 0980  
missy.laney@recorddoors.com

Dayana Alvaran  
Customer Service Manager  
704 290 0234  
dayana.alvaran@recorddoors.com

## Product Support

HA Product Line  
Dan Wise  
Phone: 833 921 1337  
dan.wise@recorddoors.com

SS8200 Line  
Frank Keeling  
Phone: 515 707 8671  
frank.keeling@recorddoors.com

## Outside Sales Team

John Harraman  
Sales Development Representative  
Mobile: 980 425 2860  
john.harraman@recorddoors.com

Mark Huntsman  
Director of Technical Sales  
Mobile: 704 681 1411  
mark.huntsman@recorddoors.com

Liam Lehn  
Business Development Manager  
Mobile: 330 360 2601  
liam.lehn@recorddoors.com

Tony Licciardello  
OEM Sales Manager  
Mobile: 704 609 3674  
tony.licciardello@recorddoors.com

David Pickers  
Vice President of Direct Sales  
Mobile: 704 315 7392  
david.pickers@recorddoors.com

Timothy Usnik  
Strategic Sales Distribution Manager  
Mobile: 404 290 8522  
timothy.usnik@recorddoors.com

## Holiday Schedule

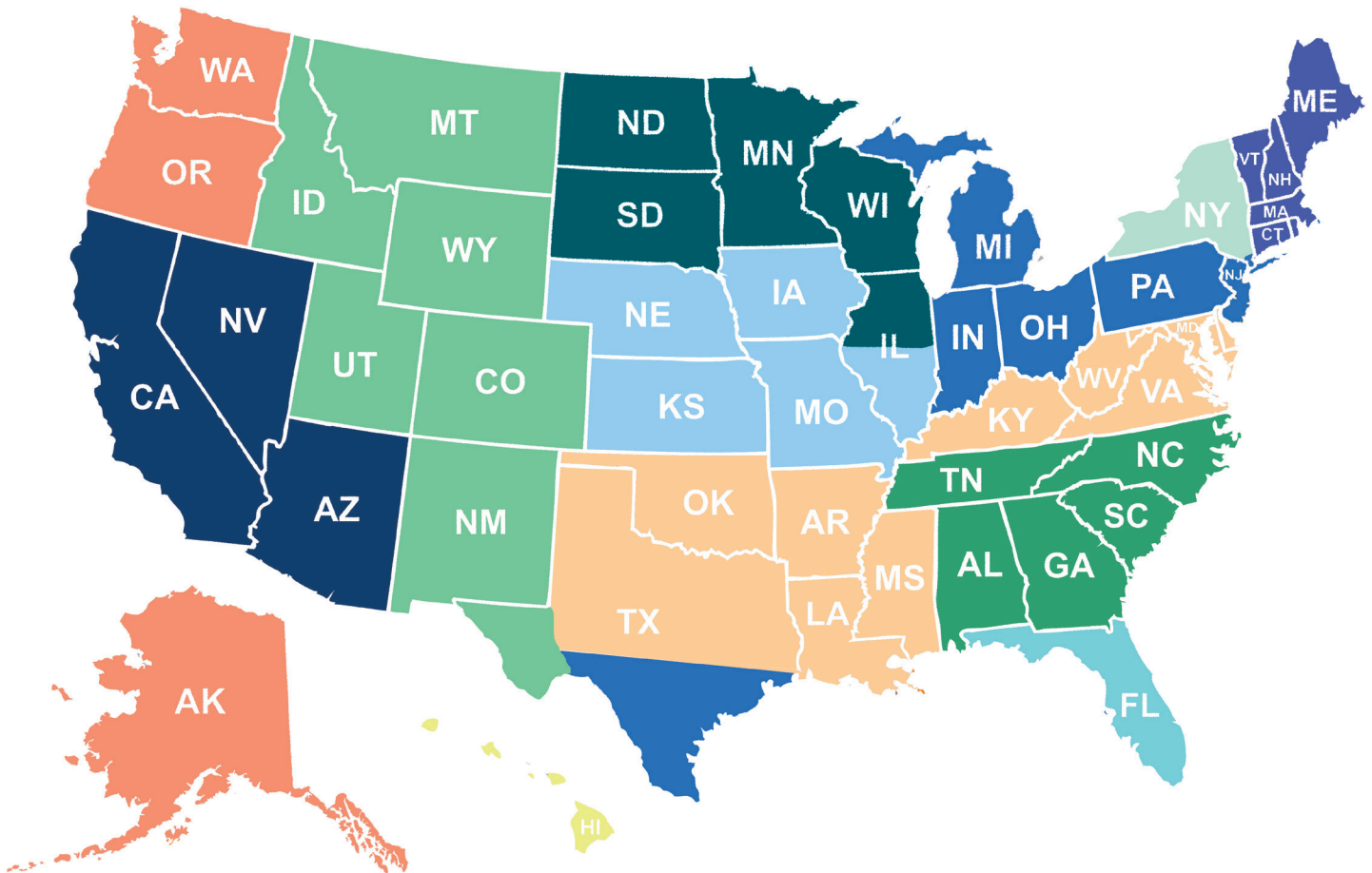
Record USA will be CLOSED on the following dates:

2026

New Year's Day - January 1  
Presidents' Day - February 16  
Good Friday - April 3  
Memorial Day - May 25  
Juneteenth - June 19  
Independence Day – July 3  
Labor Day – September 7  
Thanksgiving Day – November 26  
Day After Thanksgiving – November 27  
Christmas Eve - December 24  
Christmas - December 25

\* dates subject to change

## Manufacturers Rep Agencies



**Liam Lehn** (MI, IN, OH, PA, NJ, NY Metro)  
330 360 2601, [liam.lehn@recorddoors.com](mailto:liam.lehn@recorddoors.com)

**ASA** (IA, So IL, NE, KS, MO)  
Matt Moran 816 804 5848 [mjmoran10@gmail.com](mailto:mjmoran10@gmail.com)

**MAS** (CT, MA, VT, NH, ME, RI)  
Mark Szczepanski 860 604 1769 [mark@massalesllc.com](mailto:mark@massalesllc.com)

**AMA** (FL)  
Jack Sheehan 407 353 1223 [jack@division8consulting.com](mailto:jack@division8consulting.com)

**ASH** (So CA, So NV, AZ)  
Mark Ferraro 714 498 2459, [mark.ferraro@ash.team](mailto:mark.ferraro@ash.team)

**Dugan Associates** (NY, excluding NYC)  
Kyle Leach 518 281 4018, [kyle@duganassoc.com](mailto:kyle@duganassoc.com)

**WJ Schelp** (ND, SD, MN, WI, No IL)  
Scott Schelp 612 859 4890 [scott@wjschelp.com](mailto:scott@wjschelp.com)

**John Harraman** (MD, DC, VA, DE, WV, KY)  
980 425 2860, [john.harraman@recorddoors.com](mailto:john.harraman@recorddoors.com)

**Region West** (WA, OR, AK)  
Rich Ward 702 232 1022

**The Rep Collective** (CO, UT, MT, WY, ID, NM, El Paso Area)  
720 402 2588, [andy@therepcollective.biz](mailto:andy@therepcollective.biz)

**Tillman Sales** (NC, SC, GA, TN, AL)  
Grant Tillman 470 922 5022, [grant@tillmansalesgroup.com](mailto:grant@tillmansalesgroup.com)

**Core Products** (HI)  
Brad 808 866 2117

## Terms and Conditions

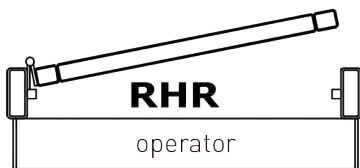
- » Prices are subject to change without notice. Record is not responsible for typographical or pricing errors, and such errors will not be honored.
- » Cancelled orders are subject to fees.
- » Minimum \$50 order (all orders received less than \$50 will be invoiced at \$50)
- » To confirm your discount and/or net pricing please contact your customer service representative.
- » To discuss volume requirements to achieve the next level of pricing, please contact Record sales management.



- » Items listed in bold qualify for *Quick Ship*.
- » \$15 drop ship fee.
- » We reserve the right to limit quantities.
- » No changes or cancellations will be accepted.
- » Quoted projects do not qualify for *Quick Ship* program.

## Swing Door Operator Handing Terminology Chart

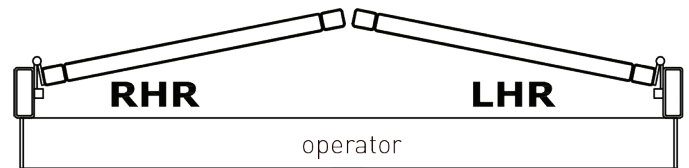
Note: Operator Handing Terminology is universal for all types of door pivot rotation. Door can be Butt Hung as shown; Continuous Hinge; Offset Pivot or Overhead Concealed Center Pivot.



LEFT HAND PUSH ARM  
(OUTSWING)



RIGHT HAND PUSH ARM  
(OUTSWING)



DUAL (PAIR) PUSH ARM  
(OUTSWING)



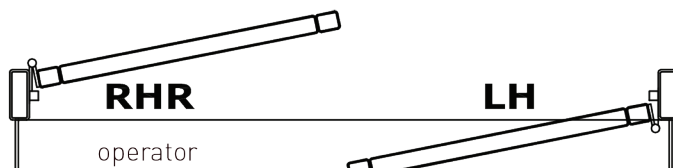
RIGHT HAND PULL TRACK  
(INSWING)



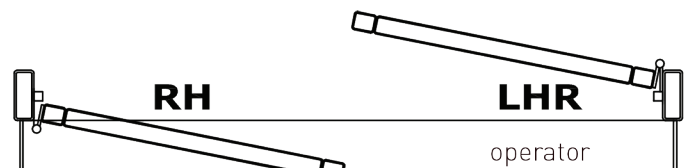
LEFT HAND PULL TRACK  
(INSWING)



DUAL (PAIR) PULL TRACK  
(INSWING)



LEFT HAND  
DUAL (DOUBLE) EGRESS



RIGHT HAND  
DUAL (DOUBLE) EGRESS

## Header Sizing Guidelines

Header Size	Door Opening Width (DOW)
39"	36" Single
45"	42" Single
51"	48" Single
75"	72" Pair
87"	84" Pair
99"	96" Pair

## HA7 Series Door Operators



Base package prices below include:

- » Two year warranty from date of shipment
- » Non-handed operator with controller
- » Push and Pull Arms
- » One piece, clear or dark bronze cover
- » Mounting hardware
- » Required decals to meet ANSI specifications

Part #	Application	Finish	List Price
HA7-150	Single, 39" header, push/pull combo with internal power supply/door stop	Clear	\$4,135.00
HA7-250	Single, 39" header, push/pull combo with internal power supply/door stop	Dark Bronze	\$4,135.00
<b>Accessories</b>			
W7-330000831	Push arm shaft extension 20mm/35mm kit	Black	\$65.00
W7-330000832	Pull arm shaft extension 28mm/43mm kit	Black	\$65.00
W7-1026730	Plug-In Power adaptor kit includes: ground wire, power cord, extension power cable, adaptor holder, and power adaptor (24vdc, 90w)	n/a	\$534.00
1025017	Push Door Stop	n/a	\$55.00
330001207	Pull Door Stop	n/a	\$55.00

## HA7 Trash Room Kits



Kit includes:

- » HA7 operator
- » LE Flat Scan
- » Logic Relay
- » Door Position Switch & Lock Kick

Part #	Application	Finish	List Price
HA7-150TR-LH	Left Hand	Clear	\$6,640.00
HA7-150TR-RH	Right Hand	Clear	\$6,640.00
HA7-250TR-LH	Left Hand	Dark Bronze	\$6,640.00
HA7-250TR-RH	Right Hand	Dark Bronze	\$6,640.00

**Power Buy Program: Buying at the quantities below awards you the additional discount off of your base operator net price.** This program is product specific and cannot be combined with other product lines to reach a discount level. This program cannot be combined with other buying programs. Contact your sales rep to discuss. The discount is applied to the base price of the operator, excluding any added options.

- » 10-19 operators 3.5%
- » 20-29 operators 8.0%
- » 30-49 operators 16.4%
- » 50+ operators 20.8%

**Free Freight Program:** Introducing a second incentive program for you. When you order \$15,000 in HA Series product, we'll cover the freight! This program is product specific and cannot be combined with other product lines to reach the minimum threshold needed to receive.



## HA8-LP Series Door Operators



### NOTES:

- » See Power Buy and Free Freight program details below.
- » Upgrade prices reflect a single motor/gearbox (except Dual Egress). Estimate cost accordingly.
- » Specific part numbers in bold qualify for Quick Ship.

### Base package prices below include:

- » Two year warranty from date of shipment
- » Non-handed operator with controller
- » Arm
- » One piece, clear or dark bronze cover
- » Mounting hardware
- » Required decals to meet ANSI specifications

Unit	Application	Finish	List Price
HA8-LP (single, 39", 45" or 51")	Push or Pull	Clear or Bronze	\$4,617.00
HA8-LP (dual 75", 87", 99")	Push or Pull, Fits pair of 36", 42" or 48" doors	Clear or Bronze	\$9,234.00
	Factory Upgrades		
	Dual Egress Feature	Add	\$412.00
	Extended Spindle 1/2" (WL-PO108-FU)	Add	\$256.00
	Black finish for single units (39", 45" or 51")	Add	\$400.00
	Black finish for dual units (75")	Add	\$800.00
	Universal arm with extended pull track- single	Add	\$235.00
	Universal arm with extended pull track- dual (fits pair of 36", 42", or 48" doors). Combo of (W5-512C and W5-551) and (W5-512B and W5-556).	Add	\$470.00

**Power Buy Program:** We're excited to continue offering our improved quantity break program. Buying at the quantities below awards you the additional discount off of your net price. **This program is not applicable with certain buying programs. Contact your sales rep for eligibility.**

- » 10-19 operators 3.5%
- » 20-29 operators 8.0%
- » 30-49 operators 16.4%
- » 50+ operators 20.8%

**Free Freight Program:** Introducing a second incentive program for you. When you order \$15,000 in HA Series product, we'll cover the freight! This program is product specific and cannot be combined with other the SS8200 to reach the minimum threshold needed to receive.

## HA8-LP Series Door Operators

### Standard Part Numbers

Part #	Application	Finish	Header Size	List Price
<b>WL-102-39</b>	<b>Left Hand Pull</b>	<b>Clear (CL)</b>	<b>39"</b>	<b>\$4,617.00</b>
<b>WL-106-39</b>	<b>Left Hand Pull</b>	<b>Bronze (BZ)</b>	<b>39"</b>	<b>\$4,617.00</b>
WL-102-45	Left Hand Pull	Clear (CL)	45"	\$4,617.00
WL-106-45	Left Hand Pull	Bronze (BZ)	45"	\$4,617.00
<b>WL-102-51</b>	<b>Left Hand Pull</b>	<b>Clear (CL)</b>	<b>51"</b>	<b>\$4,617.00</b>
WL-106-51	Left Hand Pull	Bronze (BZ)	51"	\$4,617.00
<b>WL-104-39</b>	<b>Right Hand Pull</b>	<b>Clear (CL)</b>	<b>39"</b>	<b>\$4,617.00</b>
WL-108-39	Right Hand Pull	Bronze (BZ)	39"	\$4,617.00
WL-104-45	Right Hand Pull	Clear (CL)	45"	\$4,617.00
WL-108-45	Right Hand Pull	Bronze (BZ)	45"	\$4,617.00
WL-104-51	Right Hand Pull	Clear (CL)	51"	\$4,617.00
WL-108-51	Right Hand Pull	Bronze (BZ)	51"	\$4,617.00
<b>WL-101-39</b>	<b>Push</b>	<b>Clear (CL)</b>	<b>39"</b>	<b>\$4,617.00</b>
<b>WL-105-39</b>	<b>Push</b>	<b>Bronze (BZ)</b>	<b>39"</b>	<b>\$4,617.00</b>
<b>WL-101-45</b>	<b>Push</b>	<b>Clear (CL)</b>	<b>45"</b>	<b>\$4,617.00</b>
WL-105-45	Push	Bronze (BZ)	45"	\$4,617.00
<b>WL-101-51</b>	<b>Push</b>	<b>Clear (CL)</b>	<b>51"</b>	<b>\$4,617.00</b>
WL-105-51	Push	Bronze (BZ)	51"	\$4,617.00
<b>WL-101-75</b>	<b>Pair Doors Push</b>	<b>Clear (CL)</b>	<b>75"</b>	<b>\$9,234.00</b>
<b>WL-105-75</b>	<b>Pair Doors Push</b>	<b>Bronze (BZ)</b>	<b>75"</b>	<b>\$9,234.00</b>
WL-104-75	Pair Doors Pull	Clear (CL)	75"	\$9,234.00
WL-108-75	Pair Doors Pull	Bronze (BZ)	75"	\$9,234.00

## HA8-SP Series Door Operators



### NOTES:

- » See Power Buy and Free Freight program details below.
- » Upgrade prices reflect a single motor/gearbox (except Dual Egress). Estimate cost accordingly.
- » Specific part numbers in bold qualify for Quick Ship.

### Base package prices below include:

- » Two year warranty from date of shipment
- » handed operator with controller
- » Arm
- » clear or dark bronze cover
- » Mounting hardware
- » Required decals to meet ANSI specifications

Unit	Application	Finish	List Price
HA8-SP (single, 39", 45" or 51")	Push or Pull	Clear or Bronze	\$5,076.00
HA8-SP (dual 75")	Push or Pull, Fits pair of 36" doors	Clear or Bronze	\$10,151.00
HA8-SP (dual 87")	Push or Pull, Fits pair of 42" doors	Clear or Bronze	\$10,151.00
HA8-SP (dual 99")	Push or Pull, Fits pair of 48" doors	Clear or Bronze	\$10,151.00
	<b>Factory Upgrades</b>		
	Push and Go	Add	\$604.00
	Dual Egress Feature	Add	\$412.00
	Extended Spindle Shaft – 9-3/4"	Add	\$318.00
	Black finish for single units (39", 45", 51")	Add	\$400.00
	Black finish for dual units (75")	Add	\$800.00

**Power Buy Program:** We're excited to continue offering our improved quantity break program. Buying at the quantities below awards you the additional discount off of your net price. **This program is not applicable with certain buying programs. Contact your sales rep for eligibility.**

- » 10-19 operators 3.5%
- » 20-29 operators 8.0%
- » 30-49 operators 16.4%
- » 50+ operators 20.8%

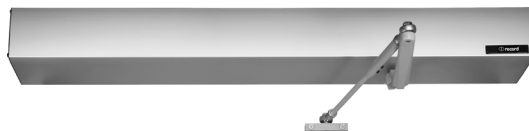
**Free Freight Program:** Introducing a second incentive program for you. When you order \$15,000 in HA Series product, we'll cover the freight! This program is product specific and cannot be combined with the SS8200 to reach the minimum threshold needed to receive.

## HA8-SP Series Door Operators

### Standard Part Numbers

Part #	Application	Finish	Header Size	List Price
<b>W9-103-39</b>	<b>Right Hand Push</b>	<b>Clear (CL)</b>	<b>39"</b>	<b>\$5,076.00</b>
W9-107-39	Right Hand Push	Bronze (BZ)	39"	\$5,076.00
<b>W9-103-45</b>	<b>Right Hand Push</b>	<b>Clear (CL)</b>	<b>45"</b>	<b>\$5,076.00</b>
W9-107-45	Right Hand Push	Bronze (BZ)	45"	\$5,076.00
W9-103-51	Right Hand Push	Clear (CL)	51"	\$5,076.00
W9-107-51	Right Hand Push	Bronze (BZ)	51"	\$5,076.00
<b>W9-101-39</b>	<b>Left Hand Push</b>	<b>Clear (CL)</b>	<b>39"</b>	<b>\$5,076.00</b>
<b>W9-105-39</b>	<b>Left Hand Push</b>	<b>Bronze (BZ)</b>	<b>39"</b>	<b>\$5,076.00</b>
<b>W9-101-45</b>	<b>Left Hand Push</b>	<b>Clear (CL)</b>	<b>45"</b>	<b>\$5,076.00</b>
<b>W9-105-45</b>	<b>Left Hand Push</b>	<b>Bronze (BZ)</b>	<b>45"</b>	<b>\$5,076.00</b>
W9-101-51	Left Hand Push	Clear (CL)	51"	\$5,076.00
W9-105-51	Left Hand Push	Bronze (BZ)	51"	\$5,076.00
<b>W9-111-75</b>	<b>Pair Doors Push</b>	<b>Clear (CL)</b>	<b>75"</b>	<b>\$10,151.00</b>
<b>W9-113-75</b>	<b>Pair Doors Push</b>	<b>Bronze (BZ)</b>	<b>75"</b>	<b>\$10,151.00</b>
<b>W9-104-39</b>	<b>Right Hand Pull</b>	<b>Clear (CL)</b>	<b>39"</b>	<b>\$5,076.00</b>
W9-108-39	Right Hand Pull	Bronze (BZ)	39"	\$5,076.00
W9-104-45	Right Hand Pull	Clear (CL)	45"	\$5,076.00
W9-108-45	Right Hand Pull	Bronze (BZ)	45"	\$5,076.00
W9-104-51	Right Hand Pull	Clear (CL)	51"	\$5,076.00
W9-108-51	Right Hand Pull	Bronze (BZ)	51"	\$5,076.00
<b>W9-102-39</b>	<b>Left Hand Pull</b>	<b>Clear (CL)</b>	<b>39"</b>	<b>\$5,076.00</b>
W9-106-39	Left Hand Pull	Bronze (BZ)	39"	\$5,076.00
<b>W9-102-45</b>	<b>Left Hand Pull</b>	<b>Clear (CL)</b>	<b>45"</b>	<b>\$5,076.00</b>
W9-106-45	Left Hand Pull	Bronze (BZ)	45"	\$5,076.00
W9-102-51	Left Hand Pull	Clear (CL)	51"	\$5,076.00
W9-106-51	Left Hand Pull	Bronze (BZ)	51"	\$5,076.00
W9-112-75	Pair Doors Pull	Clear (CL)	75"	\$10,151.00
W9-114-75	Pair Doors Pull	Bronze (BZ)	75"	\$10,151.00

## HA9 Series Door Operators



### NOTES:

- » See Power Buy and Free Freight program details below.
- » Upgrade prices reflect a single motor/gearbox (except Dual Egress). Estimate cost accordingly.
- » Specific part numbers in bold qualify for Quick Ship.

### Base package prices below include:

- » Two year warranty from date of shipment
- » Non-handed operator with controller
- » Arm
- » One piece, clear or dark bronze cover
- » Mounting hardware
- » Required decals to meet ANSI specifications

Unit	Application	Finish	List Price
HA9 (single, 39", 45" or 51")	Push or Pull	Clear or Bronze	\$4,790.00
HA9 (dual 75", 87" or 99")	Push or Pull, Fits pair of 36", 42" or 48" doors	Clear or Bronze	\$9,579.00
	<b>Factory Upgrades</b>		
	Dual Egress Feature	Add	\$508.00
	Safety Auxiliary Board (W8-860-FU)	Add	\$439.00
	Battery backup (W8-855-FU)	Add	\$622.00
	Spindle extension (W8-865-FU)	Add	\$131.00
	Reveal Spacer Extrusion-Black (1 9/16" x 2 3/8")(W8-863-BLK-FU)	Add	\$50.00
	Reveal Spacer Extrusion-Clear (1 9/16" x 2 3/8")(W8-863-SI-FU)	Add	\$50.00
	Black finish for single units (39", 45" or 51")	Add	\$400.00
	Black finish for dual units (75")	Add	\$800.00

**Power Buy Program:** We're excited to continue offering our improved quantity break program. Buying at the quantities below awards you the additional discount off of your net price. **This program is not applicable with certain buying programs. Contact your sales rep for eligibility.**

- » 10-19 operators 3.5%
- » 20-29 operators 8.0%
- » 30-49 operators 16.4%
- » 50+ operators 20.8%

**Free Freight Program:** Introducing a second incentive program for you. When you order \$15,000 in HA Series product, we'll cover the freight! This program is product specific and cannot be combined with the SS8200 to reach the minimum threshold needed to receive.

## HA9 Series Door Operators Standard Part Numbers

Part #	Application	Finish	Header Size	List Price
HA9-102-39	Pull	Clear (CL)	39"	\$4,790.00
HA9-106-39	Pull	Bronze (BZ)	39"	\$4,790.00
HA9-102-45	Pull	Clear (CL)	45"	\$4,790.00
HA9-106-45	Pull	Bronze (BZ)	45"	\$4,790.00
HA9-102-51	Pull	Clear (CL)	51"	\$4,790.00
HA9-106-51	Pull	Bronze (BZ)	51"	\$4,790.00
HA9-102-75	Pair Pull	Clear (CL)	75"	\$9,579.00
HA9-106-75	Pair Pull	Bronze (BZ)	75"	\$9,579.00
HA9-101-39	Push	Clear (CL)	39"	\$4,790.00
HA9-105-39	Push	Bronze (BZ)	39"	\$4,790.00
HA9-101-45	Push	Clear (CL)	45"	\$4,790.00
HA9-105-45	Push	Bronze (BZ)	45"	\$4,790.00
HA9-101-51	Push	Clear (CL)	51"	\$4,790.00
HA9-105-51	Push	Bronze (BZ)	51"	\$4,790.00
HA9-101-75	Pair Push	Clear (CL)	75"	\$9,579.00
HA9-105-75	Pair Push	Bronze (BZ)	75"	\$9,579.00

## SS8200/SimpleSwing Series Door Operators



### NOTES:

- » A valid part number (available for standard configurations only) or an order form are required when placing an order.
- » See Power Buy program and Free Freight program details below.
- » Operators can be mounted on the push or pull side of the door.
- » Slide track arm and standard arm will work on push or pull side.
- » Operators are field reversible.
- » Standard arm- limitation: 12" reveal push, 1" reveal on pull side, pull side requires 7" clearance between door frame and opposing wall.
- » Slide track arm-limitation: 3" reveal pull side, 6" reveal push side.

### Base package prices below include:

- » Two year warranty from date of shipment
- » Non-handed operator with controller
- » SimpleLink Display
- » Slide Track or Standard Arm
- » Square two piece cover up to 96" DOW
- » Mounting hardware
- » Clear or dark bronze covers
- » Required decals to meet ANSI specifications
- » Matching arms to unit finish specified

Unit/Header Size	Application/DOW	Finish	List Price
SS8200 (single, 39", 45" or 51")	Push or Pull, 36", 42", 48" DOW	Clear or Dark Bronze	\$5,906.00
SS8200 (dual 63", 75", 87", 99")	Push or Pull, 60", 72", 84", 96" DOW	Clear or Dark Bronze	\$11,812.00
SS8200 (dual egress 63", 75", 87", 99")	Dual Egress, 60", 72", 84", 96" DOW	Clear or Dark Bronze	\$12,180.00
Factory Installed Upgrades			
	Offset Arm (single)	Add	\$320.00
	Offset Arm (dual)	Add	\$640.00
	Black Anodized (single)	Add	\$238.00
	Black Anodized (dual)	Add	\$476.00
	Battery Backup Installed (single)	Add	\$1,085.00
	Battery Backup Installed (dual)	Add	\$2,170.00
	Brake (single)	Add	\$1,000.00
	Brake (dual)	Add	\$2,000.00
	Single Operator in Paired Cover	Add	\$480.00

**Power Buy Program:** We're excited to continue offering our improved quantity break program. Buying at the quantities below awards you the additional discount off of your base operator net price. This program is product specific and cannot be combined with other product lines to reach a discount level. This program cannot be combined with other buying programs. Contact your sales rep to discuss. The discount is applied to the base price of the operator, excluding any added options.

- » 10-19 operators 3.5%
- » 20-29 operators 8.0%
- » 30-49 operators 16.4%
- » 50+ operators 20.8%

**Free Freight Program:** Introducing a second incentive program for you. When you order \$15,000 in SS8200 material, we'll cover the freight! This program is product specific and cannot be combined with other product lines to reach the minimum threshold needed to receive.

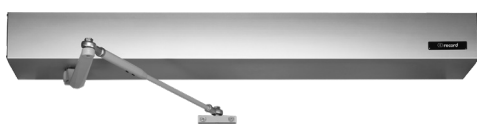
## SS8200/SimpleSwing Series Door Operators

### Standard Part Numbers

Part #	Handing	Finish	Header/DOW	List Price
SS8211C2SNN_36	LHR Standard	Clear	39"/36"	\$5,906.00
SS8211C2SNN_42	LHR Standard	Clear	45"/42"	\$5,906.00
SS8211C2SNN_48	LHR Standard	Clear	51"/48"	\$5,906.00
SS8211D2SNN_36	LHR Standard	Dark Bronze	39"/36"	\$5,906.00
SS8211D2SNN_42	LHR Standard	Dark Bronze	45"/42"	\$5,906.00
SS8211D2SNN_48	LHR Standard	Dark Bronze	51"/48"	\$5,906.00
SS8261C2S4S_72	LHR-RHR Standard	Clear	75"/72"	\$11,812.00
SS8261D2S4S_72	LHR-RHR Standard	Dark Bronze	75"/72"	\$11,812.00
SS8202C1TNN_36	LH Track	Clear	39"/36"	\$5,906.00
SS8202C1TNN_42	LH Track	Clear	45"/42"	\$5,906.00
SS8202C1TNN_48	LH Track	Clear	51"/48"	\$5,906.00
SS8202D1TNN_36	LH Track	Dark Bronze	39"/36"	\$5,906.00
SS8202D1TNN_42	LH Track	Dark Bronze	45"/42"	\$5,906.00
SS8202D1TNN_48	LH Track	Dark Bronze	51"/48"	\$5,906.00
SS8252C1T3T_72	LH-RH Track	Clear	75"/72"	\$11,812.00
SS8252D1T3T_72	LH-RH Track	Dark Bronze	75"/72"	\$11,812.00



## EZ36 Kits - Automate a 36" Door in One Box



### NOTES

- » See Free Freight program details below.
- » Push plates also available in blue with "push to open" text by request.
- » Specific part numbers in bold qualify for Quick Ship.
- » Standard orders will ship in 3-5 business days.

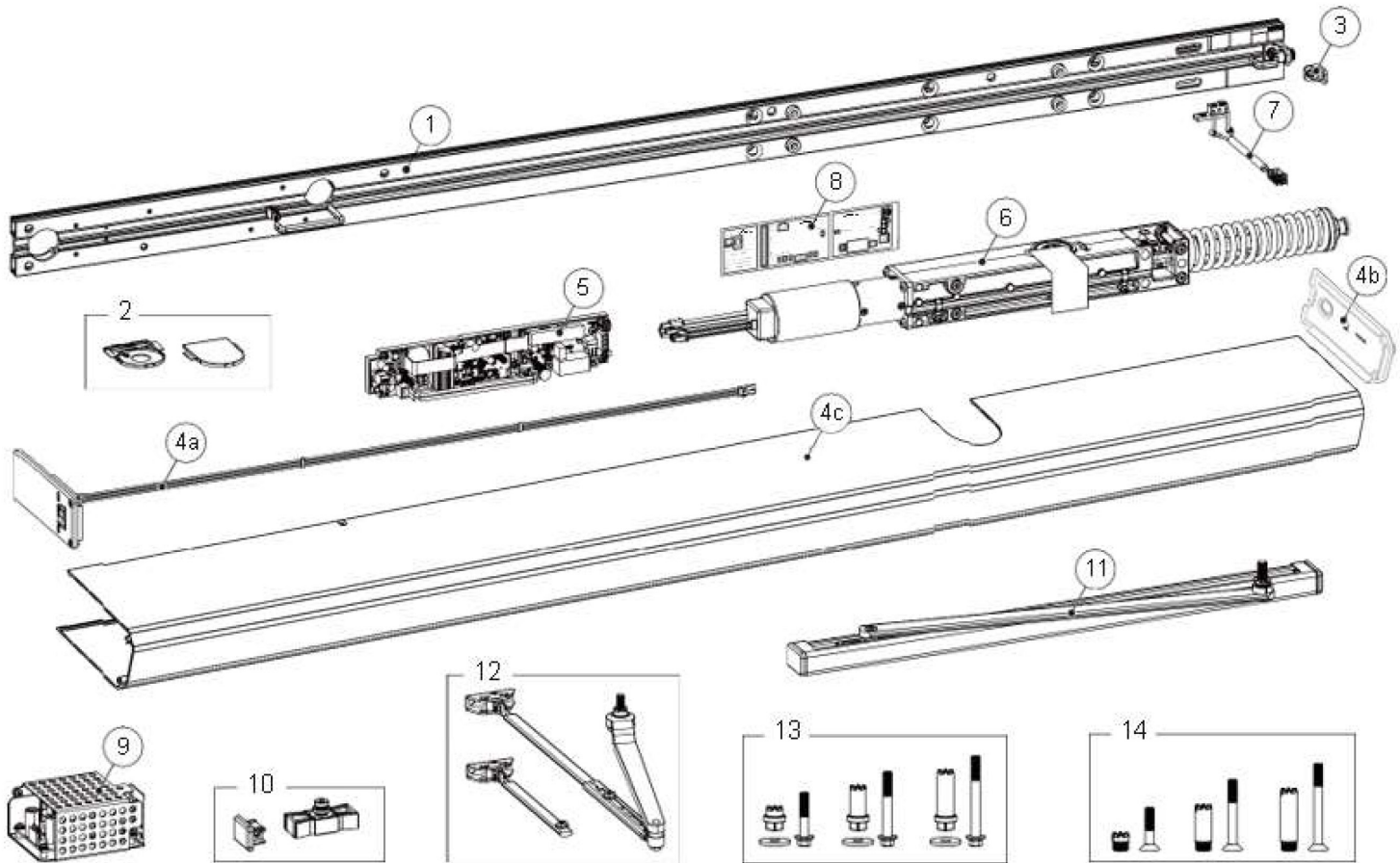
### Kit includes:

- » Two year warranty from date of shipment
- » (1) HA7, HA8-LP or HA9 operator
- » (2) square 4.5" push plates
- » (2) surface mount boxes
- » (2) 900 MHz transmitters
- » (1) 900 MHz receiver
- » Required decals to meet ANSI specifications

Part No.	Operator	Application	Finish	List Price
<b>W9-200</b>	<b>HA8-LP</b>	<b>Push</b>	<b>Clear (CL)</b>	<b>\$6,473.00</b>
<b>W9-205</b>	<b>HA8-LP</b>	<b>Pull (left hand)</b>	<b>Clear (CL)</b>	<b>\$6,473.00</b>
<b>W9-210</b>	<b>HA8-LP</b>	<b>Pull (right hand)</b>	<b>Clear (CL)</b>	<b>\$6,473.00</b>
<b>W9-215</b>	<b>HA8-LP</b>	<b>Universal</b>	<b>Clear (CL)</b>	<b>\$6,643.00</b>
<b>W9-220</b>	<b>HA8-LP</b>	<b>Push</b>	<b>Dark Bronze (BZ)</b>	<b>\$6,473.00</b>
<b>W9-225</b>	<b>HA8-LP</b>	<b>Pull (left hand)</b>	<b>Dark Bronze (BZ)</b>	<b>\$6,473.00</b>
<b>W9-230</b>	<b>HA8-LP</b>	<b>Pull (right hand)</b>	<b>Dark Bronze (BZ)</b>	<b>\$6,473.00</b>
<b>W9-235</b>	<b>HA8-LP</b>	<b>Universal</b>	<b>Dark Bronze (BZ)</b>	<b>\$6,643.00</b>
<b>HA9-202CLR</b>	<b>HA9</b>	<b>Push</b>	<b>Clear (CL)</b>	<b>\$6,384.00</b>
<b>HA9-201CLR</b>	<b>HA9</b>	<b>Pull</b>	<b>Clear (CL)</b>	<b>\$6,384.00</b>
<b>HA9-202BRZ</b>	<b>HA9</b>	<b>Push</b>	<b>Dark Bronze (BZ)</b>	<b>\$6,384.00</b>
<b>HA9-201BRZ</b>	<b>HA9</b>	<b>Pull</b>	<b>Dark Bronze (BZ)</b>	<b>\$6,384.00</b>
		<b>Factory Upgrades</b>		
		Black finish (excluding HA7)	Add	\$400.00

*Free Freight Program: Introducing a second incentive program for you. When you order \$15,000 in HA Series product, we'll cover the freight! This program is product specific and cannot be combined with the SS8200 to reach the minimum threshold needed to receive.*

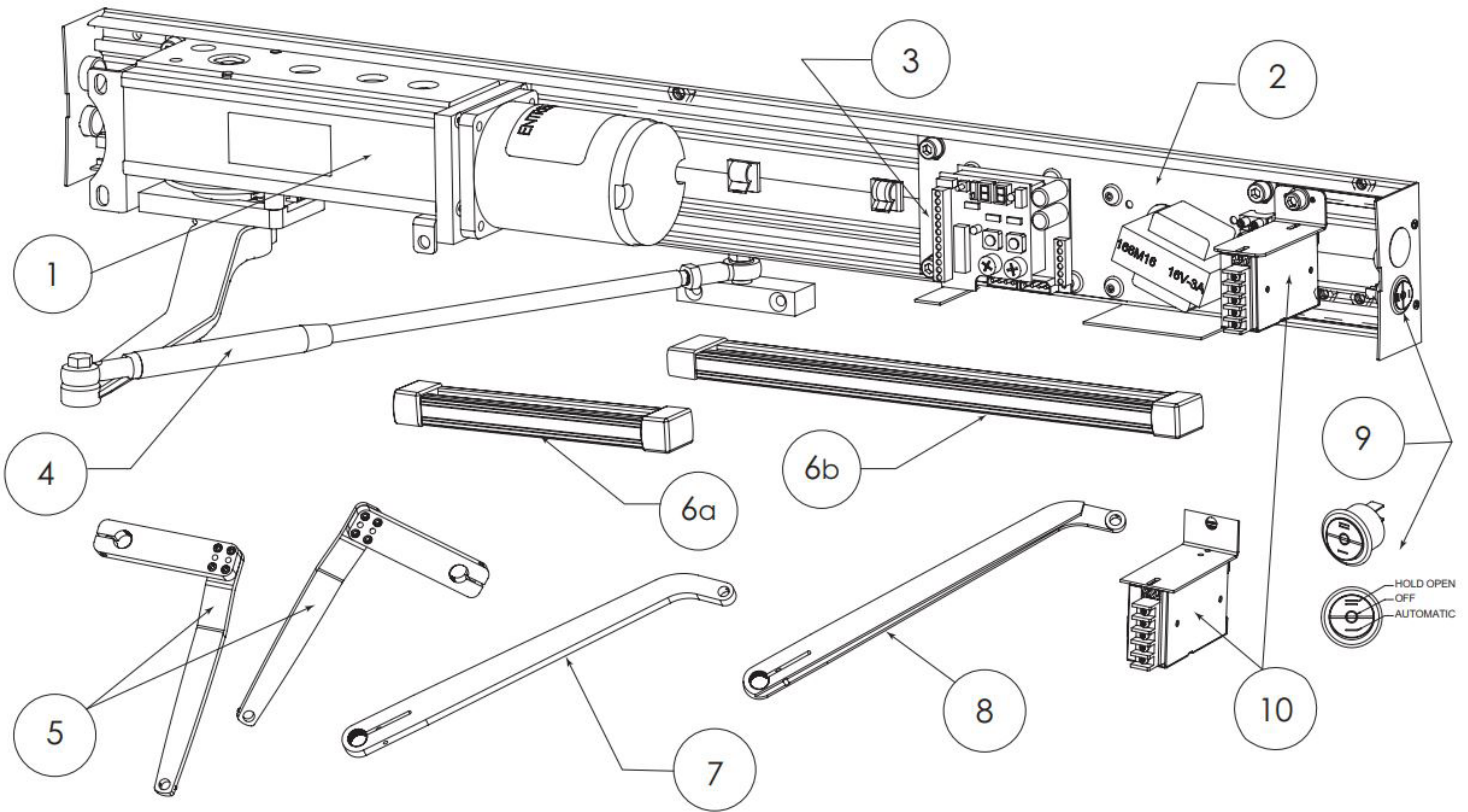
## Replacement Parts - HA7



Item	Part #	Description
1	W7-330001225	back plate with power cable
2	W7-331020445BK	spindle cover kit (black)
	W7-331020445PD	spindle cover kit (grey)
3	W7-331019785	bracket power plug
4a	W7-331027034	endplate with control switch (black), 88mm
4b	W7-331026159	endplate (black), 88mm
4c	W7-331026149DB	cover (black), 88mm
	W7-331026149NA	cover (silver), 88mm
5	W7-331018537	control unit (CU)
6	W7-330000841	transmission unit kit
7	W7-330000829	lock kick for push & pull
8	W7-331020035	CU connection label
9	W7-331026784	power supply assembly

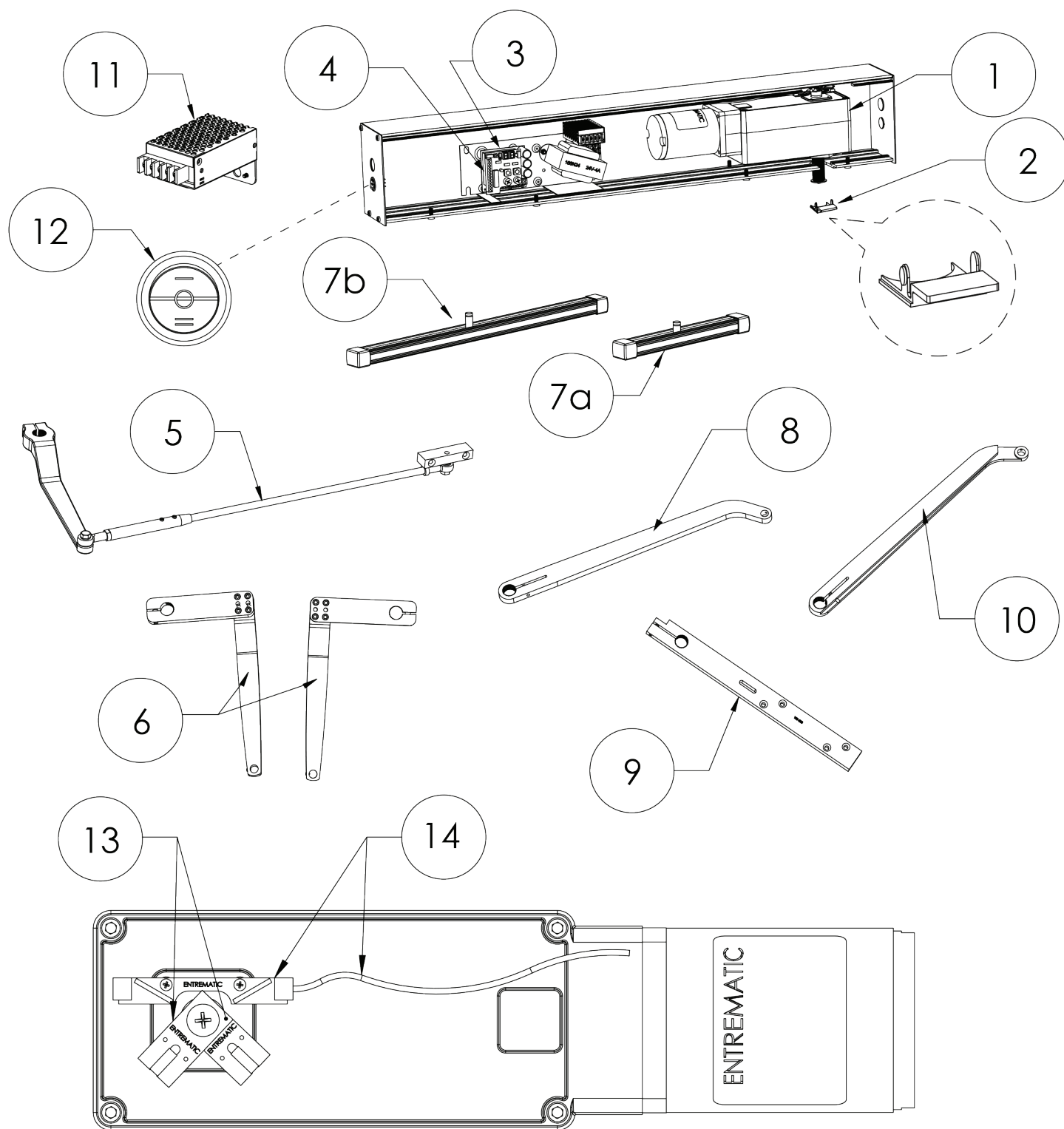
Item	Part #	Description
10	W7-330000830BK	pull arm service kit (black)
	W7-330000830PD	pull arm service kit (grey)
11	W7-331020226BK	pull arm kit (black)
	W7-331020226PD	pull arm kit (grey)
12	W7-331020857BK	push arm kit (black)
	W7-331020857PD	push arm kit (grey)
13	W7-330000831BK	drive shaft kits for PUSH arm (black)
14	W7-330000832BK	drive shaft kits for PULL arm (black)

## Replacement Parts - HA8-LP



Item	Category	Part #	Description	Item	Category	Part #	Description
1	Operators	WL-PA03	LP Operator	6a	Arm	W5-550	Pull track assembly-clear
2	Controls	W7-130-1	Digital Control Board			W5-555	Pull track assembly-bronze
3	Controls	W5-422	Fuse 3amp digital	6b	Arms	W5-551	Pull track assembly long-clear (univ arm)
4	Arms	W7-200	complete push arm-clear			W5-556	Pull track assembly long-bronze (univ arm)
		W7-205	complete push arm-bronze	7	Arms	W5-512C	Universal Arm-clear
5	Arms	W5-506C	Z Arm-RH-Clear			W5-512B	Universal Arm-bronze
		W5-505C	Z Arm-LH-Clear	9	Misc	WL-Rocker switch	On-Off-Hold Open 3-position switch
		W5-506B	Z Arm-RH-Bronze				
		W5-505B	Z Arm-LH-Bronze	10	Misc	WL-PWRKIT	RS-25-24 Power Supply Kit
		W5-508C	Extended Z Arm-RH-Clear				
		W5-507C	Extended Z Arm-LH-Clear				
		W5-508B	Extended Z Arm-RH-Black				
		W5-507B	Extended Z Arm-LH-Black				

## Replacement Parts - HA8-SP

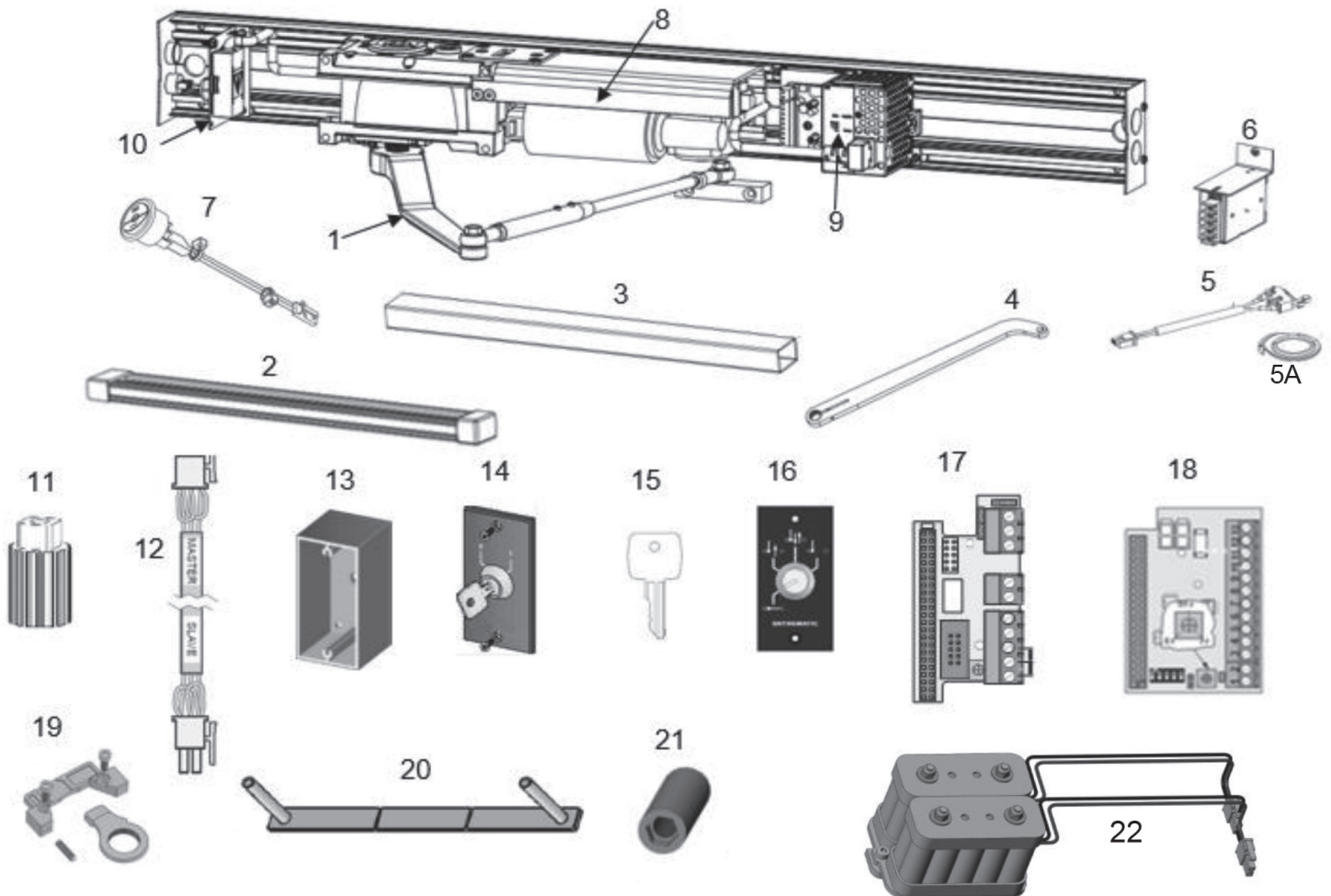


## Replacement Parts - HA8-SP

Item	Category	Part #	Description	Item	Category	Part #	Description
1	Operators	W7-105L	LH 1/8 hp operator	7a	Pull Arm Track - short (for z arm)	W5-550	Pull track assembly - clear
		W7-105R	RH 1/8 hp operator			W5-555	Pull track assembly - bronze
		W7-106L	LH 1/8 hp, push & go operator	7b	Pull Arm Track - long (for Universal/ Center Spindle)	W5-551	Pull track assembly long-clear (for Univ/Center Spindle)
		W7-106R	RH 1/8 hp, push & go operator			W5-556	Pull track assembly long-bronze (for Univ/Center Spindle)
2	Header Cap	W5-557	Header Plastic Cap	8	Universal Arm	W5-512C	Universal Arm-clear
3	Control Board	W7-130-1	HA Digital Control Board			W5-512B	Universal Arm-bronze
4	Fuses	W5-422	3amp fuse (HA8)	11	AUX Power Supply Kit (optional)	WL- PWRKIT	RS-25-24 Power supply kit
		W5-430	4amp fush (FA8)				
5	Push Arm	W7-200	complete push arm-clear	12	Rocker Switch	WL- ROCKER- SWITCH	On/off/hold open 3 position switch
		W7-205	complete push arm-bronze				
		W5-502C	cast portion only- clear	13	Magnet Sets	W5-416	magnet set, detects back check and latch check phases
		W5-502B	cast portion only-bronze				
6	Z Arm (Pull)	W5-506C	Z Arm-RH-Clear	14	Reed Switch	W5-415	reed switch & harness; com- municates to control board the position of door
		W5-505C	Z Arm-LH-Clear				
		W5-506B	Z Arm-RH-Bronze	15	Harness Cable	W5-415-2	Communicates to control board the position of door
		W5-505B	Z Arm-LH-Bronze				
		W5-508C	Ext Z Arm-RH-Clear				
		W5-508B	Ext Z Arm-RH-Black				
		W5-507C	Ext Z Arm-LH-Clear				
		W5-507B	Ext Z Arm-LH-Black				
5	Arms	W5-506C	Z Arm-RH-Clear				
		W5-505C	Z Arm-LH-Clear				
		W5-506B	Z Arm-RH-Bronze				
		W5-505B	Z Arm-LH-Bronze				
		W5-508C	Extended Z Arm-RH-Clear				
		W5-507C	Extended Z Arm-LH-Clear				
		W5-508B	Extended Z Arm-RH-Black				
		W5-507B	Extended Z Arm-LH-Black				



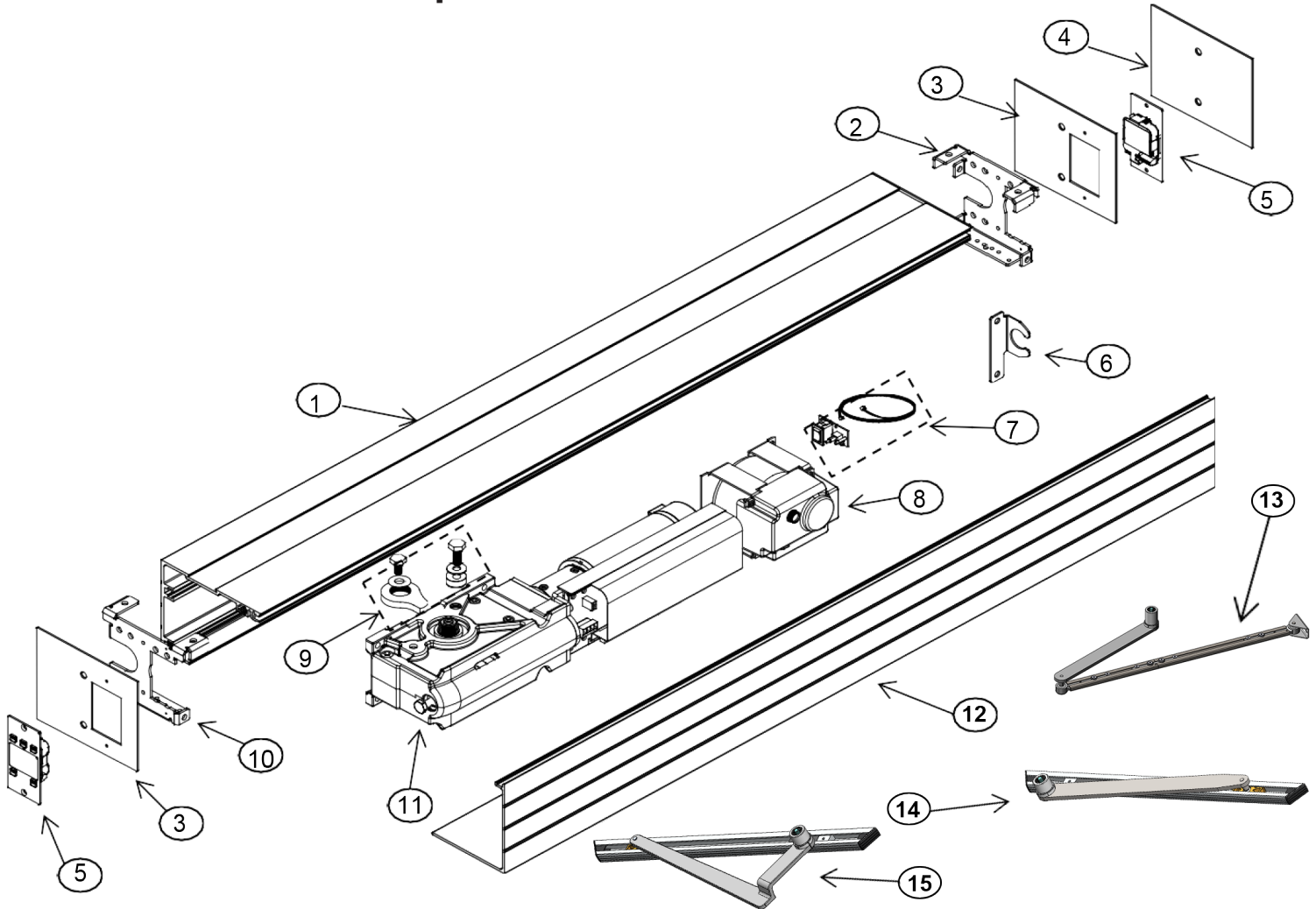
## Replacement Parts - HA9



## Replacement Parts - HA9

Item	Category	Part #	Description	Item	Category	Part #	Description
1	Push Arm	W7-200	complete push arm-clear (17.5" rod)	7	Rocker Switch	W8-804	on/off/hold open 3-position switch
		W7-205	complete push arm-bronze (17.5" rod)	8	Motor/Gearbox	W8-801	motor/gearbox kit
		W5-502C	cast portion- clear	9	Controls	W8-802	HA9 Controller
		W5-502B	cast portion- bronze	10	Conduit	W8-803	Conduit bracket kit
		W5-500C	22" extended rod- clear	11	Shaft Adaptor	W8-805	Shaft adaptor
		W5-500B	22" extended rod-bronze	12	Sync Cable	W8-850	sync cable for pair units
2	Pull Arm Track-Long	W5-551	pull track assembly long-clear	13	Program Selector	W8-856	surface mount box
		W5-556	pull track assembly long-bronze	14		W8-857	2 pos., psk-2
3	Reveal Spacer Extrusion (1-9/16" x 2-3/8")	W8-863-BLK	Spacer Assy - black	15		W8-858	spare key psk/ps-4c
		W8-863-SL	Spacer Assy- silver	16		W8-859	4 pos, w/ key PS-4C
4	Pull Arm	W5-512C	pull arm-clear	17	Extension Units	W8-860	EXU-SA
		W5-512B	pull arm-bronze	18		W8-861	EXU-SI
5	Micro Switch Kit	W8-852	lock kick switch & cam (includes 5A)	19	Stop Arm Kit	W8-851	Stop Arm Kit
5A	Lock Kick	W8-864	lock kick cam	20	Lock Spacer Kit	W8-853	Lock Spacer Kit
6	Power Supply Kit	WL-PWRKIT	RS-25-24 power supply kit	21	Allen Key Head Nut Kit	W8-854	Allen Key Head Nut Kit
				22	Battery backup	W8-855	Optional battery backup

## Replacement Parts - SS8200



Item	Part #	Description	Item	Part #	Description
1	5-85-4003-CL	Header, Clear	10	202-005121578	Bracket, Header to Jamb, BDE-D, SS8200, LH
	5-85-4003-DB	Header, Dark Bronze			
2	202-005121579	Bracket, Header to Jamb, BDE-D, SS8200, RH	11	9-80-0101	Drive Module w/ Control, SS8200
3	202-005121570	End Cap, Header, 8000, BDE-D Cutout, SS8200	12	5-85-4004-CL	Cover, Clear
4	4-85-1011	End Cap, Header (blank)		5-85-4004-DB	Cover, Dark Bronze
5	9-99-1321	Control Module, Display	13	202-005816400	Standard Arm Assembly, Clear
6	4-51-1004	Bracket, Conduit Anchor		202-005816402	Standard Arm Assembly, Dk Bronze
7	9-80-0106	Kit, Rocker Switch Assembly w/ Cable	14	102-127816028	Track Arm Assembly, Clear
8	9-80-0102	Power Supply		102-127816110	Track Arm Assembly, Dk Bronze
9	9-80-0103	Kit, Hard Stop	15	102-127816078	Offset Arm Assembly, Clear (LH)
				102-127816111	Offset Arm Assembly, Dk Bronze (LH)
				102-127816079	Offset Arm Assembly, Clear (RH)
				102-127816112	Offset Arm Assembly, Dk Bronze (RH)

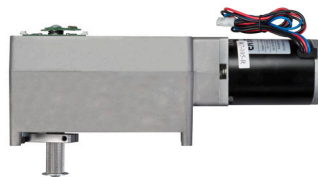


## Replacement – Spare Parts



### Controls

Part No.	Description	List Price
W7-331018537	HA7 Control Unit	\$1,061.00
W8-802	HA9 Controller	\$1,504.00
W7-130-1	Digital Control Board for SP & LP with Universal Mounting Bracket	\$757.00
9-80-0101	SS8200 Drive Module with Control	\$4,212.00
9-99-1321	SS8200 Control Module Display	\$748.00
W5-422	3 Amp Fuses – Std Controls, Long, Digital (6 pack)	\$43.00



### Operators

Part No.	Description	List Price
W7-330000841	HA7 Transmission Unit	\$1,005.00
W8-801	HA9 Motor/Gearbox	\$3,081.00
WL-PA03	HA8-LP Operator – Non-Handed with Standard Spring	\$2,150.00
W7-105L	HA8-SP Operator with standard spring (left hand) (fits SP models after 12/1/17)	\$2,429.00
W7-105R	HA8-SP Operator with standard spring (right hand) (fits SP models after 12/1/17)	\$2,429.00



### Arms

Part No.	Description	List Price
W7-200	Push Arm Complete -Clear (up to 14" reveal)	\$520.00
W7-205	Push Arm Complete - Bronze (up to 14" reveal)	\$520.00
W5-502B	Push Arm, Main Arm Only- Bronze	\$254.00
W5-502C	Push Arm, Main Arm Only - Clear	\$254.00
W5-505B	Z/Pull Arm Left - Bronze (for complete assembly order track below) (4" reveal)	\$455.00
W5-506B	Z/Pull Arm Right - Bronze (for complete assembly order track below) (4" reveal)	\$455.00

W5-555	Pull Arm Track Assembly (11-3/8" w/ endcaps) for 90 Degree Arm - Bronze	\$122.00
W5-505C	Z/Pull Arm Left - Clear (for complete assembly order track below) (4" reveal)	\$455.00
W5-506C	Z/Pull Arm Right-Clear (for complete assembly order track below) (4" reveal)	\$455.00
W5-550	Pull Arm Track Assembly (11-3/8" w/endcaps) for 90 Degree Arm - Clear	\$122.00
W5-512B	Universal Arm - Bronze (for complete assy order track below) (4" reveal)	\$410.00
W5-512C	Universal Arm - Clear (for complete assembly order track below) (4" reveal)	\$410.00
W5-556	Pull Arm Track Assembly (22") for Universal Arm - Bronze	\$187.00
W5-551	Pull Arm Track Assembly (22") for Universal Arm - Clear	\$187.00
W5-500C	Extended Push Arm Rod (up to 18" reveal) (additional) - Clear	\$111.00
W5-500B	Extended Push Arm Rod (up to 18" reveal) (additional) - Bronze	\$111.00
W5-507C	Extended Pull Arm for Left Hand (up to 8" reveal) - Clear	\$345.00
W5-507B	Extended Pull Arm for Left Hand (up to 8" reveal) - Black	\$345.00
W5-508C	Extended Pull Arm for Right Hand (up to 8" reveal) - Clear	\$345.00
W5-508B	Extended Pull Arm for Right Hand (up to 8" reveal) - Black	\$345.00
W7-330000830BK	HA7 Pull Arm Service Kit - Black	\$36.00
W7-330000830PD	HA7 Pull Arm Service Kit - Grey	\$36.00
W7-331020226BK	HA7 Pull Arm Kit - Black	\$132.00
W7-331020226PD	HA7 Pull Arm Kit - Grey	\$132.00
W7-331020857BK	HA7 Push Arm Kit - Black	\$164.00
W7-331020857PD	HA7 Push Arm Kit - Grey	\$164.00
W7-330000831BK	HA7 Drive Shaft kits for PUSH arm (black)	\$76.00
W7-330000832BK	HA7 drive shaft kits for PULL arm (black)	\$76.00
202-005816400	SS8200 Standard Arm Assembly - Clear	\$707.00
202-005816402	SS8200 Standard Arm Assembly - Dark Bronze	\$844.00
102-127816028	SS8200 Track Arm Assembly - Clear	\$707.00
102-127816110	SS8200 Track Arm Assembly - Dark Bronze	\$844.00
102-127816078	SS8200 Offset Arm Assembly - Clear (LH)	\$1,090.00
102-127816111	SS8200 Offset Arm Assembly - Dark Bronze (LH)	\$1,094.00
102-127816079	SS8200 Offset Arm Assembly - Clear (RH)	\$1,090.00
102-127816112	SS8200 Offset Arm Assembly - Dark Bronze (RH)	\$1,094.00


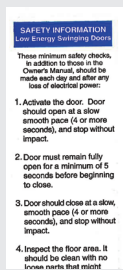


## Miscellaneous

Part No.	Description	List Price
WL-P0108	HA8-LP Extended Spindle Shaft (1-1/2" Extension)	\$271.00
WL-P0109	HA8-LP Extended Spindle Shaft (3" Extension)	\$271.00
W8-803	Conduit Bracket Assembly for HA9	\$152.00
W8-850	Sync Cable for HA9 pair operators	\$154.00
W8-851	Door Stop with Stop Block Kit for HA9	\$152.00
W8-852	Micro Switch Kit with cam for HA9	\$79.00
W8-853	Lock Spacer Kit	\$17.00
W8-854	Allen Key Head Nut Kit	\$9.00
W8-855	Battery Backup for HA9	\$659.00
W8-805	Shaft Adaptor for HA9	\$100.00
W8-860	EXU-SA (safety auxiliary board for HA9)	\$465.00
W8-861	EXU-SI (security auxiliary board for HA9)	\$619.00
W8-863-BLK	Reveal Spacer Assembly - black (1 9/16"x 2 3/8")	\$53.00
W8-863-SL	Reveal Spacer Assembly - silver (1 9/16"x 2 3/8")	\$53.00
W5-415	Reed Switch for SP	\$122.00
WL-P0068	Reed Switch for LP	\$122.00
W5-415-1	Reed Switch Harness (both HA Standard and Low Profile)	\$34.00
W5-415-2	Reed Switch Harness Extension (both HA standard and low profile)	\$47.00
W5-416	Reed Switch Magnets for SP (Back Check)	\$34.00
W5-409	On/Off/Hold Open Switch (for SP and FA units prior to 11/30/17)	\$100.00
WL-ROCKER	3-Way Rocker Switch (On/Off/Hold Open for SP & LP units)	\$28.00
W8-804	3-Way Rocker Switch (On/Off/Hold Open, 3-position switch for HA9)	\$62.00
W8-856	Surface Mount Box Program Selector	\$48.00
W8-857	Program Selector, 2 position, PSK-2	\$163.00
W8-858	Spare Key PSK/PS-4C	\$20.00
W8-859	Program Selector, 4 position w/ key PS-4C	\$163.00
8100-PWRKIT	24 VDC-1.1 amp Aux Power Supply Kit with mounting hardware for HA, SS, and 8100 units	\$592.00
W5-528C	Aluminum reinforcement bracket for aluminum storefronts where no backing exists (clear)	\$160.00
W5-528B	Aluminum reinforcement bracket for aluminum storefronts where no backing exists (black)	\$160.00

Part No.	Description	List Price
W7-331020157	HA7 Ground Wire (for use with HA7-100 or HA7-200)	\$22.00
W7-330001225	HA7 Back Plate with Power Cable (for use with HA7-150 or HA7-250)	\$62.00
W7-330000828	HA7 Back Plate with Power Cable (for use with HA7-100 or HA7-200)	\$62.00
W7-331020445BK	HA7 Spindle Cover Kit (black)	\$12.00
W7-331020445PD	HA7 Spindle Cover Kit (grey)	\$12.00
W7-331019785	HA7 Bracket Power Plug	\$8.00
W7-331027034	HA7 Endplate with Control Switch (black), 88mm	\$48.00
W7-331020704BK	HA7 Endplate with Control Switch (black) (for use with HA7-100 or HA7-200)	\$48.00
W7-331026159	HA7 Endplate (black), 88mm	\$22.00
W7-331020393BK	HA7 Endplate (black) (for use with HA7-100 or HA7-200)	\$22.00
W7-330000829	HA7 Lock Kick for Push & Pull	\$45.00
W7-331020396DB	HA7 Cover (dark bronze) (for use with HA7-200)	\$55.00
W7-331026149DB	HA7 Cover (dark bronze)	\$55.00
W7-331020396NA	HA7 Cover (silver) (for use with HA7-100)	\$55.00
W7-331026149NA	HA7 Cover (silver)	\$55.00
W7-331018859	HA7 Power Cord (for use with HA7-100 or HA7-200)	\$28.00
W7-331703711	HA7 Power Adaptor (for use with HA7-100 or HA7-200)	\$140.00
W7-331020293	HA7 Power Box Adaptor Kit (internal components only, box not included) (for use with HA7-100 or HA7-200)	\$250.00
W7-1026730	HA7 Plug-In Power Adaptor Kit (for use with HA7-150 or HA7-250)	\$254.00
W7-330001207	HA7 Doorstop Kit - Pull (for use with HA7-100 and HA7-200)	\$55.00
W7-1025017	HA7 Doorstop Kit - Push (for use with HA7-100 and HA7-200)	\$55.00
5-85-4003-CL	SS8200 Header - Clear	\$72.00
5-85-4003-DB	SS8200 Header - Dark Bronze	\$76.00
202-005121579	SS8200 Bracket, Header to Jamb, BDE-D, RH	\$36.00
202-005121578	SS8200 Bracket, Header to Jamb BDE-D, LH	\$36.00
202-005121570	SS8200 End Cap, Header with BDE-D Cut-Out	\$43.00
4-85-1011	SS8200 End Cap, Header (blank)	\$32.00
4-51-1004	SS8200 Bracket, Conduit Anchor	\$14.00
9-80-0106	SS8200 Rocker Switch Assembly w/ Cable	\$257.00
9-80-0102	SS8200 Power Supply	\$923.00
9-80-0103	SS8200 Hard Stop Kit	\$270.00
5-85-4004-CL	SS8200 Cover - Clear	\$37.00
5-85-4004-DB	SS8200 Cover - Dark Bronze	\$39.00

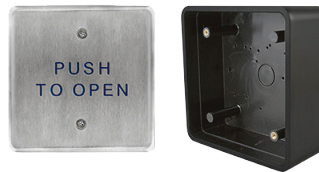
## Decals

Part No.	Description	Image	List Price
W5-628	Caution Automatic Door/Activate Switch to Operate combo decal		\$28.00
W5-626	Record logo "Dome" label		\$21.00
W5-625	Low Energy AAADM Decal		\$21.00

### Notes:

- » Replacement Parts Warranty. Limited 1 Year from Ship Date. See Warranty Statement.
- » \$50 Minimum order required.
- » 45% Restocking fee.
- » \$15 drop ship fee.
- » Products listed in bold qualify for the Quick Ship Program. See program details on page 6.

- » Record offers the following activation and accessories to compliment our product lines.
- » Sensors can be found in our Parts Price list, reach out to your representative for assistance.



## ACTIVATION - Push Plates

Part #	Description	List Price
9-61-0067	1.5" x 4.75" BEA Jamb Plate "Push To Open" Text Only	\$128.00
202-005118914	1.5" x 4.75" BEA Jamb Plate "Push To Open" Text & Handicap Logo	\$128.00
9-61-0004	1.5" x 4.75" BEA Jamb Plate Baby Carriage & Handicap Logo	\$128.00
202-00518912	1.5" x 4.75" BEA Black Jamb Push Plate Mounting Box	\$57.00
W6-107	4.5" BEA SQ Blue Push Plate "Push To Open" Text Only	\$188.00
W6-108	4.5" BEA SQ SS Push Plate "Push To Open" Text Only	\$188.00
9-61-0045	4.5" BEA SQ SS Push Plate "Push To Open" Text & Handicap Logo	\$188.00
202-005118910	4.5" BEA Black SQ Push Plate Surface Mounting Box	\$79.00
202-005124243	4.5"x4.5" BEA Black SQ Push Plate Flush Mounting Box	\$98.00
9-61-0068	4.75" BEA SQ SS Push Plate "Push To Open" Text Only	\$187.00
W6-110	4.75" BEA SQ SS Push Plate Handicap Logo Only	\$188.00
9-61-0069	4.75" BEA SQ SS Push Plate "Push To Open" Text & Handicap Logo	\$187.00
9-61-0001	4.75" BEA SQ SS Vestibule Push Plate "Push To Open" text & Handicap Logo	\$336.00
W6-111	4.75" x 4.75" BEA Black SQ Push Plate Mounting Box	\$79.00
9-61-0075	4.75" x 4.75" BEA Black Weather Ring	\$26.00
W6-114	6" BEA Round SS Push Plate "Push To Open" Text & Handicap Logo	\$215.00
W6-115	6" BEA Round SS Push Plate Handicap Logo Only	\$231.00
W6-115-2	6" BEA Black Round Weather Ring	\$26.00
W6-116	6" BEA Black Round Push Plate Mounting Box	\$98.00
9-61-0062	36" BEA High-Low SS Push Plate w/ Integrated 900Mhz Wireless "Push To Open" Text & Handicap Logo	\$1,409.00
W6-131	36" BEA High-Low SS Push Plate Hard-Wired "Push To Open" Text & Handicap Logo	\$1,409.00
W6-159	1.5" x 4.75" BEA Jamb Push Plate Package - 900Mhz "Push To Open" Text Only	\$602.00
202-003124834	4.75" BEA SQ SS Vestibule Push Plate Pkg - 900 Mhz Wireless "Push To Open" Text & Handicap Logo	\$1,492.00

W6-133	4.5" BEA SQ SS Push Plate Package - 900 Mhz Wireless "Push To Open" Text Only	\$844.00
W6-134	4.5" BEA SQ Blue Push Plate Package - 900 Mhz Wireless "Push To Open" Text Only	\$844.00
202-003124835	4.5" BEA SQ SS Push Plate Package - 900 Mhz Wireless "Push To Open" Text & Handicap Logo	\$844.00



### ACTIVATION - Touchless

Part #	Description	List Price
W5-670	Wave To Open Single Switch - Single and Double Gang Faceplates Included	\$260.00
9-61-0066	6" BEA Round Black MS31 "Wave To Open" Text & Hand Logo	\$714.00
202-005118907	BEA Black Single & Double Gang MS31 "Wave To Open" Text & Hand Logo	\$717.00
202-005118908	BEA Gray Single & Double Gang MS31 "Wave To Open" Text & Hand Logo	\$717.00
202-003122353	BEA SS Jamb Mounted MS41 "Wave To Open" Text & hand Logo	\$723.00
202-005125437	BEA SS Single Gang MS41 "Wave To Open" Text & Hand Logo	\$735.00
202-005125438	BEA SS Double Gang MS41 "Wave To Open" Text & Hand Logo	\$770.00
202-003128082	BEA SS Single Gang Battery-Powered MS51 "Wave To Open" Text & Hand Logo	\$1,218.00



### Accessories

Part #	Description	List Price
202-005125285	BEA Single Occupancy Restroom Kit	\$711.00
W6-148	BEA Emergency Add-On Kit	\$1,208.00
W6-160	BEA Trash Room Accessory Kit - Left Hand	\$1,399.00
W6-165	BEA Trash Room Accessory Kit - Right Hand	\$1,399.00
202-005122379	BEA Programmable 3-Relay Logic Module	\$304.00
202-005118899	BEA Bollard Mounting Post, Silver	\$817.00
202-005118900	BEA Bollard Mounting Post, Black	\$817.00
202-005118901	BEA Bollard Mounting Post, Dark Bronze	\$817.00
9-61-0072	BEA 900 Mhz Push Button Transmitter	\$166.00
9-61-0070	BEA 900 Mhz Push Button Receiver	\$226.00
P-10TD900HH1	BEA 900 Mhz Hand Held Fob	\$166.00



Record-USA  
4324 Phil Hargett Ct.  
Monroe, NC 28110  
PO Box 3099  
Monroe, NC 28111-3099  
P +1 704 289 9212  
F +1 704 289 2024  
[info@recorddoors.com](mailto:info@recorddoors.com)  
[www.recorddoors.us](http://www.recorddoors.us)

Part of ASSA ABLOY