

TABLE OF CONTENTS

A

Arms, 5100 Series

Main Arm Assembly.....6
 Extra Heavy Duty Parallel7
 Extra Heavy Duty Hold Open7
 Pull Side Stop8
 Pull Side Hold Open Stop8
 Extra Heavy Duty Stop8
 Extra Heavy Duty Hold Open Stop.....9
 Extra Heavy Duty Hold Open Cushion Stop.....9
 Extra Heavy Duty Cushion Stop9
 Standard Hold Open7
 Track Arms.....9-10

Arms, 5200 Series

Main Arm Assembly..... 12
 Extra Heavy Duty Hold Open Cushion Stop..... 15
 Extra Heavy Duty Cushion Stop 15
 Pull Side Stop 14
 Pull Side Hold Open Stop14
 Extra Heavy Duty 13
 Extra Heavy Duty Hold Open 13
 Extra Heavy Duty Hold Open Stop..... 13
 Extra Heavy Duty Stop..... 13
 Standard Hold Open 13
 Track Arms..... 15-16

Arms, 5300 Series

Main Arm Assembly..... 18
 Extra Heavy Duty 19
 Extra Heavy Duty Hold Open 19
 Extra Heavy Duty Hold Open Stop..... 19
 Extra Heavy Duty Stop..... 19
 Extra Heavy Duty Hold Open Cushion Stop..... 20
 Extra Heavy Duty Cushion Stop 21
 Pull Side Stop 20
 Pull Side Hold Open Stop..... 20
 Standard Hold Open 19
 Track Arms.....21

Arms, 5400 Series

Main Arm Assembly..... 22

B

Blade Stop Spacer

5100 Series7
 5200 Series 14
 5300 Series..... 20
 5400 Series 23

Body Only

5100 Series, Cast Iron.....6
 5200 Series, Aluminum 12
 5300 Series, Aluminum 18
 5400 Series, Aluminum 22

Brackets

Extra Clearance, 5100 Series8
 Extra Clearance, 5200 Series 15
 Extra Clearance, 5300 Series 20
 Extra Heavy Duty Parallel Arm, 5100 Series..... 7
 Hold Open Parallel Arm, 5200 Series 14
 Hold Open Parallel Arm, 5300 Series 19
 Parallel Arm, 5100 Series..... 8
 Parallel Arm, 5200 Series..... 13
 Parallel Arm, 5300 Series..... 18
 Parallel Arm, 5400 Series.....23

C

Closers

5100 Series, Grade 1 5
 5200 Series, Grade 1 11
 5300 Series, Grade 1 17
 5400 Series, Grade 222

Covers

5100 Series, Full Plastic..... 6
 5100 Series, Metal 9
 5200 Series, Full Plastic..... 12
 5200 Series, Slim Line Plastic 14
 5200 Series, Metal 15
 5300 Series, Full Plastic..... 18

D

Drop Plates

5100 Series, Regular Arm 7
 5100 Series, Low Clearance 7
 5100 Series, Parallel Arm..... 7
 5100 Series, Top Jamb..... 8
 5200 Series, Top Jamb, Narrow Top Rail..... 14
 5200 Series, Narrow Top Rail 14
 5200 Series, Top Jamb, Parallel Arm..... 14
 5200 Series, Parallel Arm 14
 5300 Series, Narrow Rail, Parallel Arm..... 20
 5300 Series, Low Clearance 20
 5300 Series, OH Holder, Narrow..... 20

E

Electromagnetic Door Holders & Accessories

Accessories 25-26
 Floor Mount (Double Door) 24
 Floor Mount (Single Door)..... 24
 Flush Mount 24
 Recessed Mount 24
 Surface Mount..... 24

H

High Security Package, 5100 Series..... 6
 How To Order 3-4



Door Controls

L

Long Rod and Shoe, 5100 Series.....	7
Long Rod and Shoe, 5200 Series.....	13
Long Rod and Shoe, 5300 Series.....	19

O

Overhead Door Holders and Stops.....	27-31
--------------------------------------	-------

P

Pinion Cap

5200 Series.....	14
5300 Series.....	18
5400 Series.....	23

S

Screw Packs

5100 Series.....	7-9
5200 Series.....	12-13
5300 Series.....	18-19
5400 Series.....	23
Spring Cushion Kit.....	9,15, 20

T

Track Arms

5100 Series.....	6, 9-10
5200 Series.....	12, 15-16
5300 Series.....	18, 20-21

INTRODUCTION

Hager door controls offer architects, contractors, and building owners a superior product with proven reliability. In fact, our 5100, 5200, and 5300 Series Grade 1 models are the only closers in the industry that are both BHMA certified and backed by a lifetime warranty. That makes them a no-risk choice for virtually any building type.

With Hager, you get door controls that are packaged with everything needed for quick installation, regardless of the application. Hager door closers are tri-packed for mounting three ways: parallel arm, regular arm, and top jamb. They are non-handed, packaged with a parallel arm bracket and thru-bolts at no extra charge, and adjustable for various door sizes.

New Finish

Painted flat black finish (BHMA 693) is now available. Use BLK to designate finish. Extended lead time and MOQ may apply.

Cancellation Notification

Cancellation for made-to-order items must be communicated within 48 hours of order placement.



HOW TO ORDER

5100	MLT	1-6	ALM	HOTA	FC	SX1G	DLY
	Mount		Finish		Covers		Miscellaneous
	MLT - Multi-Mount PAR - Parallel/Arm Mount TRK- Track Arm Mount		ALM - Sprayed Aluminum BRZ - Sprayed Bronze DBZ - Sprayed Dark Bronze GOL - Sprayed Gold BLK - Sprayed Black		FC - Full Cover MC - Metal Cover		DLY -Delayed Action
Product Group		Size		Arm Options		Fastener Options	
5100-Cast Iron, Grade 1		1-6 Adjustable		HD - Extra Heavy Duty Arm HO - Hold Open Arm HDHO - Extra Heavy Duty Hold Open Arm LA - Long Arm HDHOS - Extra Heavy Duty Hold Open Stop Arm HDHOCS - Extra Heavy Duty Hold Open Cushion Stop Arm HDS - Extra Heavy Duty Stop Arm HDCS - Extra Heavy Duty Cushion Stop Arm HOTA - Hold Open/Stop Track Arm NHOTA - Non Hold Open Stop Track Arm DEHOTA - Double Egress HO Stop Track Arm DENHOTA - Double Egress Non-HO Stop Track Arm PSS - Pull Side Stop Arm PSHOS - Pull Side Hold Open Stop Arm		SX1G - Sex Bolts for 1-3/8" Door SX1N - Sex Bolts for 1-3/4" Door SX2 - Sex Bolts for 2" Door SX2D - Sex Bolts for 2-1/4" Door	

HOW TO ORDER

5200	MLT	1-6	DBZ	NHOTA	SLC	LH	SX2	DLY
	Mount		Finish		Covers		Fastener Options	
	MLT- Multi-Mount PAR- Parallel Arm Mount TRK- Track Arm Mount		ALM - Sprayed Aluminum BRZ - Sprayed Bronze DBZ - Sprayed Dark Bronze GOL - Sprayed Gold BLK - Sprayed Black		SLC - Slim Line Cover FC - Full Cover MC - Metal Cover PC - Pinion Cap		SX1G - Sex Bolts for 1-3/8" Door SX1N - Sex Bolts for 1-3/4" Door SX2 - Sex Bolts for 2" Door SX2D - Sex Bolts for 2-1/4" Door	
Product Group		Size				Handing Options		Miscellaneous
5200-Slim Body Aluminum, Grade 1		1-6 Adjustable				RH - Right Hand LH - Left Hand (Specify when ordering 5912)		DLY -Delayed Action
			Arm Options					
			HD - Extra Heavy Duty Arm HO - Hold Open Arm HDHO - Extra Heavy Duty Hold Open Arm LA - Long Arm HDHOS - Extra Heavy Duty Hold Open Stop Arm HDHOCS - Extra Heavy Duty Hold Open Cushion Stop Arm HDS - Extra Heavy Duty Stop Arm HDCS - Extra Heavy Duty Cushion Stop Arm HOTA - Hold Open/Stop Track Arm NHOTA - Non Hold Open Stop Track Arm DEHOTA - Double Egress HO Stop Track Arm DENHOTA - Double Egress Non-HO Stop Track Arm PSS - Pull Side Stop Arm PSHOS - Pull Side Hold Open Stop Arm					



Door Controls

HOW TO ORDER

5300	MLT	1-6	DBZ	HOTA	FC	RH	SX1G	DLY
Product Group 5300 - Aluminum, Grade 1	Mount MLT- Multi-Mount PAR- Parallel Arm Mount TRK- Track Arm Mount	Size 1-6 Adjustable	Finish ALM - Sprayed Aluminum BRZ - Sprayed Bronze DBZ - Sprayed Dark Bronze GOL - Sprayed Gold BLK - Sprayed Black	Arm Options HD - Extra Heavy Duty Arm HO - Hold Open Arm HDHO - Extra Heavy Duty Hold Open Arm LA - Long Arm HDHOS - Extra Heavy Duty Hold Open Stop Arm HDHOCS - Extra Heavy Duty Hold Open Cushion Stop Arm HDS - Extra Heavy Duty Stop Arm HDCS - Extra Heavy Duty Cushion Stop Arm HOTA - Hold Open/Stop Track Arm NHOTA - Non Hold Open Stop Track Arm PSS - Pull Side Stop Arm PSHOS - Pull Side Hold Open Stop Arm	Covers FC - Full Cover PC - Pinion Cap	Handing Options RH - Right Hand LH - Left Hand (Specify when ordering 5912)	Fastener Options SX1G - Sex Bolts for 1-3/8" Door SX1N - Sex Bolts for 1-3/4" Door SX2 - Sex Bolts for 2" Door SX2D - Sex Bolts for 2-1/4" Door	Miscellaneous DLY -Delayed Action



Door Controls - 5100 Series



Description	Finish	2022 List	Stock No.	Case Qty.	Box Qty.
5100 Series Grade 1 Adjustable sizes 1-6	ALM	386.22	126470	4	1
	BRZ	386.22	126473		
	DBZ	386.22	126472		
	GOL	386.22	126474		
	BLK	386.22	199292		
	32D	632.97	062640		

ADA (Barrier Free) Door Closers:

Any certified BHMA/ANSI A156.4 door closer, regardless of manufacturer, that is installed and adjusted based on ADA or other reduced opening force requirements may not provide sufficient power to reliably close and latch a door.

If arms are ordered separately, there will be a significant difference in price than if purchased with a closer as a complete assembly. Adders are listed below. Add the list price of the option to the list price of the closer and take standard discounts.

Delayed Action Valve	21.03
Check with factory for pricing and availability of plated products.	POA

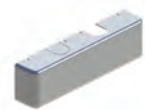
Closers with non-standard arms

5100 Series 1-6 Closer, 5106 extra heavy duty arm, plastic cover	ALM	443.60	130952
	BRZ	443.60	130970
	DBZ	443.60	130973
	GOL	443.60	130976
	BLK	443.60	
5100 Series 1-6 Closer, 5107 standard hold open arm, plastic cover	ALM	432.73	126475
	BRZ	432.73	130899
	DBZ	432.73	130947
	GOL	432.73	130951
	BLK	432.73	
5100 Series 1-6 Closer, 5108 extra heavy duty hold open arm, plastic cover (left hand)	ALM	428.51	130956
	BRZ	428.51	149871
	DBZ	428.51	151034
	GOL	428.51	156482
	BLK	428.51	
5100 Series 1-6 Closer, 5108 extra heavy duty hold open arm , plastic cover (right hand)	ALM	428.51	130957
	BRZ	428.51	149872
	DBZ	428.51	151033
	GOL	428.51	156483
	BLK	428.51	
5100 Series 1-6 Closer, 5123 pull side stop arm, plastic cover	ALM	439.56	025181
	DBZ	439.56	025182
5100 Series 1-6 Closer, 5124 pull side hold open stop arm, plastic cover	ALM	463.32	025178
	DBZ	463.32	025171
5100 Series 1-6 Closer, 5125 extra heavy duty stop arm, plastic cover	ALM	443.60	130961
	BRZ	443.60	130972
	DBZ	443.60	130975
	GOL	443.60	130978
	BLK	443.60	
5100 Series 1-6 Closer, 5954 extra heavy duty hold open cushion stop arm, plastic cover	ALM	610.28	130959
	BRZ	610.28	149499
	DBZ	610.28	148985
	GOL	610.28	154060
	BLK	610.28	



Door Controls - 5100 Series

Description	Finish	2022 List	Stock	Case Qty.	Box Qty.
5100 Series 1-6 Closer, 5955 extra heavy cushion stop arm, plastic cover	ALM	554.56	130962		
	BRZ	554.56	151220		
	DBZ	554.56	150847		
	GOL	554.56	155760		
	BLK	554.56			
5100 Series 1-6 Closer, 5961 extra heavy hold open stop arm, plastic cover	ALM	500.62	130958		
	BRZ	500.62	130971		
	DBZ	500.62	130974		
	GOL	500.62	130977		
	BLK	500.62			
5100M16ALMOMOX 5100 Series High Security Package Package Contains: Closer, main arm assembly, parallel arm bracket, standard screw pack, SNB screw pack tamper resistant, torx screw pack and painted metal cover.	ALM	449.18	152114	4	1
5100 Closer w/ Non Hold Open Stop Track Arm	ALM	439.74	166331	10	1
	BRZ	439.74	166352		
	DBZ	439.74	166332		
	GOL	439.74	166353		
	BLK	439.74			
5100 Closer w/ Hold Open Stop Track Arm	ALM	455.95	166337	10	1
	BRZ	455.95	166219		
	DBZ	455.95	166338		
	GOL	455.95	167220		
	BLK	455.95			
5100 Closer w/ Double Egress Non Hold Open Stop Track Arm	ALM	474.84	166344	10	1
	BRZ	474.84	167235		
	DBZ	474.84	166345		
	GOL	474.84	167236		
5100 Closer w/ Double Egress Hold Open Stop Track Arm	ALM	491.06	166348	10	1
	BRZ	491.06	167239		
	DBZ	491.06	166349		
	GOL	491.06	167240		
5101 5100 Series Closer Body Only Adjustable sizes 1-6	ALM	291.89	148803	4	1
	BRZ	291.89	148805		
	DBZ	291.89	148804		
	GOL	291.89	148806		
	BLK	291.89	199347		
5102 Full Plastic Cover 5100 Series	ALM	20.37	89003	25	1
	BRZ	20.37	88988		
	DBZ	20.37	88928		
	GOL	20.37	88730		
	BLK	20.37	199349		
5103 Main Arm Assembly 5100 Series	ALM	40.39	72038	8	1
	BRZ	40.39	71384		
	DBZ	40.39	71378		
	GOL	40.39	71297		
	BLK	40.39	199350		



Door Controls - 5100 Series



Description	Finish	2022 List	Stock	Case Qty.	Box Qty.
5104 Standard Screw Pack 5100 Series	ALM	11.40	87683	80	1
	BRZ	11.40	87619		
	DBZ	11.40	87607		
	GOL	11.40	87089		
	BLK	11.40	75940		
5106 Extra Heavy Duty Parallel Arm 5100 Series	ALM	110.72	71612	10	1
	BRZ	110.72	71144		
	DBZ	110.72	71129		
	GOL	110.72	71121		
	BLK	110.72	199357		
5107 Standard Hold Open Arm 5100 Series	ALM	86.13	65492	10	1
	BRZ	86.13	65430		
	DBZ	86.13	65429		
	GOL	86.13	65422		
	BLK	86.13	199358		
5108 Extra Heavy Duty Hold Open Arm 5100 Series Specify handing when ordering.	ALM	110.72	72742	10	1
	BRZ	110.72	71054		
	DBZ	110.72	71053		
	GOL	110.72	70883		
	BLK	110.72	-		
5109 Drop Plate - Regular Arm Mount w/ Screws 5100 Series	ALM	47.52	62245	10	1
	BRZ	47.52	62028		
	DBZ	47.52	61745		
	GOL	47.52	61741		
	BLK	47.52	100464		
5110 Drop Plate - Parallel Arm Mount w/ Screws 5100 Series	ALM	47.52	61739	10	1
	BRZ	47.52	61735		
	DBZ	47.52	61726		
	GOL	47.52	61725		
	BLK	47.52	199373		
5111 Extra Heavy Duty Parallel Arm Bracket 5100 Series	ALM	20.37	61676	10	1
	BRZ	20.37	61506		
	DBZ	20.37	61432		
	GOL	20.37	61423		
	BLK	20.37	199374		
5112 Long Rod and Shoe 5100 Series For door reveals between 3" - 5".	ALM	20.37	98370	10	1
	BRZ	20.37	97617		
	DBZ	20.37	95821		
	GOL	20.37	95735		
	BLK	20.37	62264		
5113 Blade Stop Spacer	ALM	30.35	95278	15	1
	BRZ	30.35	95276		
	DBZ	30.35	94728		
	GOL	30.35	94438		
	BLK	30.35	199375		
5114 Drop Plate Low Clearance Top Jamb Mount w/ Screws 5100 Series	ALM	47.52	36332	10	1
	BRZ	47.52	36326		
	DBZ	47.52	36325		
	GOL	47.52	36292		
	BLK	47.52	199376		

1. U/M is each unless otherwise noted.



Door Controls - 5100 Series



5115
Drop Plate
Top Jamb Mount w/ Screws
5100 Series

Description	Finish	2022 List	Stock	Case Qty.	Box Qty.
5115 Drop Plate Top Jamb Mount w/ Screws 5100 Series	ALM	47.52	23471	10	1
	BRZ	47.52	36431		
	DBZ	47.52	36430		
	GOL	47.52	36380		
	BLK	47.52	074966		



5123
Pull Side Stop Arm
5100 Series

5123 Pull Side Stop Arm 5100 Series	ALM	124.74	41000	10	1
	DBZ	124.74	40989		



5124
Pull Side Hold Open Stop Arm
5100 Series

5124 Pull Side Hold Open Stop Arm 5100 Series	ALM	148.50	40986	10	1
	DBZ	148.50	40975		



5125
Extra Heavy Duty Stop Arm
5100 Series
Can be combined with 5950, spring cushion kit.

5125 Extra Heavy Duty Stop Arm 5100 Series Can be combined with 5950, spring cushion kit.	ALM	110.72	120769	10	1
	BRZ	110.72	120770		
	DBZ	110.72	120771		
	GOL	110.72	120772		
	BLK	110.72	199552		



5909
Parallel Arm Bracket
5100 Series

5909 Parallel Arm Bracket 5100 Series	ALM	10.28	63220	20	1
	BRZ	10.28	63101		
	DBZ	10.28	63100		
	GOL	10.28	63078		
	BLK	10.28	084425		



5935
2" Extra Clearance Bracket
5100 Series

5935 2" Extra Clearance Bracket 5100 Series	ALM	26.73	129572	36	6
	BRZ	26.73	129574		
	DBZ	26.73	129575		
	GOL	26.73	129576		
	BLK	26.73	-		



5940
SNB Screw Pack, 1-3/4" Door
5100 Series

5940 SNB Screw Pack, 1-3/4" Door 5100 Series	ALM	11.40	104380	200	1
	BRZ	11.40	104381		
	DBZ	11.40	104382		
	GOL	11.40	104383		
	BLK	11.40	-		



5941
SNB Screw Pack, 1-3/8" Door
5100 Series

5941 SNB Screw Pack, 1-3/8" Door 5100 Series	ALM	11.40	104384	200	1
	BRZ	11.40	104385		
	DBZ	11.40	104386		
	GOL	11.40	104387		
	BLK	11.40	-		



5942
SNB Screw Pack, 2" Door
5100 Series

5942 SNB Screw Pack, 2" Door 5100 Series	ALM	11.40	104388	200	1
	BRZ	11.40	104389		
	DBZ	11.40	104390		
	GOL	11.40	104391		
	BLK	11.40	-		

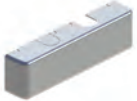


5943
SNB Screw Pack, 2-1/4" Door
5100 Series

5943 SNB Screw Pack, 2-1/4" Door 5100 Series	ALM	11.40	104392	200	1
	BRZ	11.40	104393		
	DBZ	11.40	104394		
	GOL	11.40	104395		
	BLK	11.40	-		





Door Controls - 5100 Series

	Description	Finish	2022 List	Stock	Case Qty.	Box Qty.
	5946 Tamper Resistant Torx Screwpack Sex Nuts and Bolts for 1-3/4" (44mm) doors 5100 Series Only	ALM	35.05	148410	1000	1
	5950 Spring Cushion Kit 5100/5200/5300 Series	ALM BRZ DBZ GOL BLK	148.62 148.62 148.62 148.62 148.62	118353 120777 120779 120780 199887	10	1
	5954 Extra Heavy Duty Hold Open Cushion Stop Arm 5100 Series Includes 5961 and 5950.	ALM BRZ DBZ GOL BLK	310.60 310.60 310.60 310.60 310.60	118337 118338 118339 118340 -	10	1
	5955 Extra Heavy Duty Cushion Stop Arm 5100 Series Includes 5125 and 5950.	ALM BRZ DBZ GOL BLK	267.30 267.30 267.30 267.30 267.30	118341 118342 118343 118344 -	10	1
	5961 Extra Heavy Duty Hold Open Stop Arm Can be combined with 5950, spring cushion kit.	ALM BRZ DBZ GOL BLK	221.09 221.09 221.09 221.09 221.09	192281 192282 192283 192284 199888	10	1
	5962 5100 Series Plated Metal Cover (Check with factory for availability)	US32D ALM / Painted DBZ / Painted BLK/Painted	246.75 172.74 172.74 172.74	198227 144034 144035 -	25	1
	2-659-0145 Non Hold Open Stop Track Arm 5100 Series	ALM	107.16	72256	10	1
	2-659-0144 Non Hold Open Stop Track Arm 5100 Series	BRZ	107.16	72252		
	2-659-0143 Non Hold Open Stop Track Arm 5100 Series	DBZ	107.16	72249		
	2-659-0142 Non Hold Open Stop Track Arm 5100 Series	GOL	107.16	72246		
	2-659-0137 Hold Open Stop Track Arm 5100 Series	ALM	123.55	190571	10	1
	2-659-0136 Hold Open Stop Track Arm 5100 Series	BRZ	123.55	72215		
	2-659-0135 Hold Open Stop Track Arm 5100 Series	DBZ	123.55	72207		

1. U/M is each unless otherwise noted.



Door Controls - 5100 Series

Description	Finish	Year	Stock	Case Qty.	Box Qty.
2-659-0134 Hold Open Stop Track Arm 5100 Series	GOL	123.55	72196		
 2-659-0203 Double Egress Non Hold Open Stop Track Arm 5100 Series	ALM	153.73	167865	10	1
2-659-0204 Double Egress Non Hold Open Stop Track Arm 5100 Series	BRZ	153.73	167866		
2-659-0205 Double Egress Non Hold Open Stop Track Arm 5100 Series	DBZ	153.73	167867		
 2-659-0206 Double Egress Non Hold Open Stop Track Arm 5100 Series	GOL	153.73	167868		
2-659-0207 Double Egress Hold Open Stop Track Arm 5100 Series	ALM	176.48	167869	10	1
2-659-0208 Double Egress Hold Open Stop Track Arm 5100 Series	BRZ	176.48	167870		
2-659-0209 Double Egress Hold Open Stop Track Arm 5100 Series	DBZ	176.48	167871		
2-659-0210 Double Egress Hold Open Stop Track Arm 5100 Series	GOL	176.48	167873		

Track arms only available in painted finishes shown





Description	Finish	2022 List	Stock	Case Qty.	Box Qty.
5200 Series	ALM	289.75	126476	6	1
Grade 1	BRZ	289.75	126478		
Adjustable sizes 1-6	DBZ	289.75	126477		
	GOL	289.75	126479		
	BLK	289.75	199553		

ADA (Barrier Free) Door Closers:

Any certified BHMA/ANSI A156.4 door closer, regardless of manufacturer, that is installed and adjusted based on ADA or other reduced opening force requirements may not provide sufficient power to reliably close and latch a door.

If arms are ordered separately, there will be a significant difference in price than if purchased with a closer as a complete assembly. Adders are listed below. Add the list price of the option to the list price of the closer and take standard discounts.

Delayed Action Valve

21.03

Check with factory for pricing and availability of plated products.

POA

Closers with non-standard arms

5200 Series 1-6 Closer, 5203 tri-pack arm, slim line plastic cover	ALM	289.75	145551
	BRZ	289.75	166442
	DBZ	289.75	149176
	GOL	289.75	151746
	BLK	289.75	199556
5200 Series 1-6 Closer, 5910 hold open arm, plastic cover	ALM	336.98	145539
	BRZ	336.98	145540
	DBZ	336.98	145541
	GOL	336.98	145542
	BLK	336.98	
5200 Series 1-6 Closer, 5906 extra heavy duty hold open stop arm, plastic cover	ALM	405.94	145552
	BRZ	405.94	145556
	DBZ	405.94	145557
	GOL	405.94	145558
	BLK	405.94	
5200 Series 1-6 Closer, 5907 extra heavy duty stop arm, plastic cover	ALM	348.02	145560
	BRZ	348.02	145561
	DBZ	348.02	145562
	GOL	348.02	145563
	BLK	348.02	
5200 Series 1-6 Closer, 5911 extra heavy duty arm, plastic cover	ALM	367.15	149447
	BRZ	367.15	154453
	DBZ	367.15	148832
	GOL	367.15	155891
	BLK	367.15	
5200 Series 1-6 Closer, 5912 extra heavy duty hold open arm, plastic cover (left hand)	ALM	332.70	148835
	BRZ	332.70	163413
	DBZ	332.70	153689
	GOL	332.70	156741
	BLK	332.70	
5200 Series 1-6 Closer, 5912 extra heavy duty hold open arm, plastic cover (right hand)	ALM	332.70	148839
	BRZ	332.70	163414
	DBZ	332.70	153858
	GOL	332.70	156742
	BLK	332.70	
5200 Series 1-6 Closer, 5926 pull side stop arm, plastic cover	ALM	344.52	025240
	DBZ	344.52	025172



Door Controls - 5200 Series

Description	Finish	2022 List	Stock	Case Qty.	Box Qty.
5200 Series 1-6 Closer, 5927 pull side hold open stop arm, plastic cover	ALM	368.28	025173		
	DBZ	368.28	025174		
5200 Series 1-6 Closer, 5956 extra heavy duty hold open cushion stop arm, plastic cover	ALM	516.72	149802		
	BRZ	516.72	151691		
	DBZ	516.72	149732		
	GOL	516.72	162296		
5200 Series 1-6 Closer, 5957 extra heavy duty cushion stop arm, plastic cover	ALM	468.84	149011		
	BRZ	468.84	162252		
	DBZ	468.84	148977		
	GOL	468.84	162991		
5200 Closer w/ Non Hold Open Stop Track Arm	ALM	345.17	166333	10	1
	BRZ	345.17	166354		
	DBZ	345.17	166334		
	GOL	345.17	167045		
	BLK	345.17			
5200 Closer w/ Hold Open Stop Track Arm	ALM	361.63	166339	10	
	BRZ	361.63	167223		1
	DBZ	361.63	166341		
	GOL	361.63	167224		
	BLK	361.63			
5200 Closer w/ Double Egress Non Hold Open Stop Track Arm	ALM	397.21	166350	10	1
	BRZ	397.21	167241		
	DBZ	397.21	166351		
	GOL	397.21	167242		
5200 Closer w/ Double Egress Hold Open Stop Track Arm	ALM	380.75	166346	10	1
	BRZ	380.75	167237		
	DBZ	380.75	166347		
Description	Finish	2022	Stock	Case Qty.	Box Qty.
5201 5200 Series Closer Body Only Adjustable sizes 1-6	ALM	204.45	148807	6	1
	BRZ	204.45	148809		
	DBZ	204.45	148808		
	GOL	204.45	148810		
	BLK	204.45	199708		
5202 Full Plastic Cover 5200 Series	ALM	20.37	88651	25	1
	BRZ	20.37	88532		
	DBZ	20.37	88355		
	GOL	20.37	88343		
	BLK	20.37	199709		
5203 Main Arm Assembly 5200 Series	ALM	40.39	71694	8	1
	BRZ	40.39	71296		
	DBZ	40.39	70681		
	GOL	40.39	71271		
	BLK	40.39	75941		
5204 Standard Screw Pack 5200 Series	ALM	11.76	72358	80	1
	BRZ	11.76	72236		
	DBZ	11.76	72228		
	GOL	11.76	70684		
	BLK	11.76	75941		



Door Controls - 5200 Series



Description	Finish	2022 List	Stock	Case Qty.	Box Qty.
5900 Parallel Arm Bracket 5200/5300/5400 Series	ALM	10.28	99140	120	1
	BRZ	10.28	99138		
	DBZ	10.28	99135		
	GOL	10.28	99134		
	BLK	10.28	-		
5902 SNB Screw Pack, 1-3/4" Door 5200/5300/5400 Series	ALM	11.76	99129	200	1
	BRZ	11.76	99128		
	DBZ	11.76	99127		
	GOL	11.76	99126		
	BLK	11.76	-		
5903 SNB Screw Pack, 1-3/8" Door 5200/5300/5400 Series	ALM	11.76	99125	200	1
	BRZ	11.76	99124		
	DBZ	11.76	99123		
	GOL	11.76	99122		
	BLK	11.76	-		
5904 SNB Screw Pack, 2" Door 5200/5300/5400 Series	ALM	11.76	99121	200	1
	BRZ	11.76	99118		
	DBZ	11.76	99117		
	GOL	11.76	99116		
	BLK	11.76	-		
5905 SNB Screw Pack, 2-1/4" Door 5200/5300/5400 Series	ALM	11.76	99115	200	1
	BRZ	11.76	99114		
	DBZ	11.76	99113		
	GOL	11.76	99112		
	BLK	11.76	-		
5906 Extra Heavy Duty Hold Open Stop Arm 5200/5300 Series Can be combined with 5950, spring cushion kit.	ALM	221.09	14583	10	1
	BRZ	221.09	14582		
	DBZ	221.09	14578		
	GOL	221.09	14570		
	BLK	221.09	199865		
5907 Extra Heavy Duty Stop Arm 5200/5300 Series Can be combined with 5950, spring cushion kit.	ALM	110.72	14595	10	1
	BRZ	110.72	14591		
	DBZ	110.72	14587		
	GOL	110.72	14586		
	BLK	110.72	199866		
5908 Long Rod and Shoe 5200/5300 Series	ALM	20.37	35989	25	1
	BRZ	20.37	35988		
	DBZ	20.37	35941		
	GOL	20.37	35929		
	BLK	20.37	-		
5910 Standard Hold Open Arm 5200/5300 Series If ordered separately 5914, Rev 1 needed for parallel mount	ALM	88.62	191400	10	1
	BRZ	88.62	191402		
	DBZ	88.62	191401		
	GOL	88.62	191403		
	BLK	88.62	199868		
5911 Extra Heavy Duty Arm 5200/5300 Series	ALM	110.72	73657		
	BRZ	110.72	73656		
	DBZ	110.72	73607		
	GOL	110.72	73487		
	BLK	110.72	199884		

1. U/M is each unless otherwise noted.



Door Controls - 5200 Series



Description	Finish	2022 List	Stock	Case Qty.	Box Qty.
5912 Extra Heavy Duty Hold Open Arm 5200/5300 Series Specify handing when ordering.	ALM	110.72	73446	10	1
	BRZ	110.72	73317		
	DBZ	110.72	73347		
	GOL	110.72	73283		
	BLK	110.72	-		



5913 Blade Stop Spacer 5200/5300/5400 Series	ALM	31.24	73268	15	1
	BRZ	31.24	73244		
	DBZ	31.24	73076		
	GOL	31.24	73074		
	BLK	31.24	068591		



5914 Hold Open Parallel Arm Bracket 5200/5300 Series For standard hold-open arm.	ALM	20.37	171426	60	1
	BRZ	20.37	191431		
	DBZ	20.37	191428		
	GOL	20.37	191432		
	BLK	20.37	71981		



5918 Drop Plate - Top Jamb Narrow Top Rail w/ Mounting Screws 5200 Series For use with slim line or no cover.	ALM	47.52	72262	10	1
	BRZ	47.52	72242		
	DBZ	47.52	72248		
	GOL	47.52	72241		
	BLK	47.52	-		



5919 Pinion Cap 5200 Series	ALM	2.26	72138	20	1
	BRZ	2.26	70989		
	DBZ	2.26	70779		
	GOL	2.26	70765		
	BLK	2.26			



5920 Slim Line Plastic Cover 5200 Series	ALM	20.37	70962	18	1
	BRZ	20.37	70859		
	DBZ	20.37	70987		
	GOL	20.37	70984		
	BLK	20.37	74835		



5921 Drop Plate Narrow Top Rail w/ Mounting Screws 5200 Series For use with full cover.	ALM	47.52	33996	10	1
	BRZ	47.52	33994		
	DBZ	47.52	33980		
	GOL	47.52	33979		
	BLK	47.52	39740		



5922 Drop Plate - Top Jamb Parallel Arm with Mounting Screws 5200 Series For use with slim line or no cover.	ALM	47.52	33957	10	1
	BRZ	47.52	33943		
	DBZ	47.52	33941		
	GOL	47.52	33940		
	BLK	47.52	82349		



5923 Drop Plate Parallel Arm with Mounting Screws 5200 Series For use with full cover.	ALM	47.52	33947	10	1
	BRZ	47.52	33936		
	DBZ	47.52	33934		
	GOL	47.52	33929		
	BLK	47.52	74827		



5926 Pull Side Stop Arm 5200/5300 Series	ALM	124.74	40972	10	1
	DBZ	124.74	40968		



5927 Pull Side Hold Open Stop Arm 5200/5300 Series	ALM	148.50	40969	10	1
	DBZ	148.50	40970		



Door Controls - 5200 Series

Description	Finish	2022 List	Stock	Case Qty.	Box Qty.
 5932 Plated Metal Cover (Check with factory for availability) 5200 Series	US32D	201.01	198229	25	1
	ALM (painted)	201.01	191374		
	BLK (painted)	201.01	-		
 5936 Extra Clearance Bracket 5200/5300 Series	ALM	26.73	129577	48	8
	BRZ	26.73	129578		
	DBZ	26.73	129579		
	GOL	26.73	129580		
	BLK	26.73	100387		
 5950 Spring Cushion Kit 5100/5200/5300 Series	ALM	148.62	118353	10	1
	BRZ	148.62	120777		
	DBZ	148.62	120779		
	GOL	148.62	120780		
	BLK	148.62	199887		
 5956 Extra Heavy Duty Hold Open Cushion Stop Arm 5200/5300 Series Includes 5906 and 5950.	ALM	310.60	118345	10	1
	BRZ	310.60	118346		
	DBZ	310.60	118347		
	GOL	310.60	118348		
	BLK	310.60	084427		
 5957 Extra Heavy Duty Cushion Stop Arm 5200/5300 Series Includes 5907 and 5950.	ALM	267.30	118349	10	1
	BRZ	267.30	118350		
	DBZ	267.30	118351		
	GOL	267.30	118352		
	BLK	267.30	-		
 2-659-0141 Non Hold Open Stop Track Arm 5200/5300 Series	ALM	107.16	198619	10	1
	BRZ	107.16	72247		
	DBZ	107.16	72238		
	GOL	107.16	72239		
	ALM	123.55	72197	10	1
	BRZ	123.55	72198		
	DBZ	123.55	72192		
	GOL	123.55	72193		
	ALM	153.73	167874	10	1

1. U/M is each unless otherwise noted.



Door Controls - 5200 Series

Description	Finish	2022 List	Stock	Case Qty.	Box Qty.
2-659-0212 Double Egress Non Hold Open Stop Track Arm 5200 Series	BRZ	153.73	167875		
2-659-0213 Double Egress Non Hold Open Stop Track Arm 5200 Series	DBZ	153.73	167876		
2-659-0214 Double Egress Non Hold Open Stop Track Arm 5200 Series	GOL	153.73	167877		
2-659-0215 Double Egress Hold Open Stop Track Arm 5200 Series	ALM	176.48	167878	10	1
2-659-0216 Double Egress Hold Open Stop Track Arm 5200 Series	BRZ	176.48	167879		
2-659-0217 Double Egress Hold Open Stop Track Arm 5200 Series	DBZ	176.48	167880		
2-659-0218 Double Egress Hold Open Stop Track Arm 5200 Series	GOL	176.48	167881		

Track arms only available in painted finishes shown



Door Controls - 5300 Series



Description	Finish	2022 List	Stock	Case Qty.	Box Qty.
5300 Series	ALM	231.54	145672	6	1
Grade 1	BRZ	231.54	145673		
Adjustable sizes 1-6	DBZ	231.54	145674		
	GOL	231.54	145675		
	BLK	231.54	199793		

ADA (Barrier Free) Door Closers:

Any certified BHMA/ANSI A156.4 door closer, regardless of manufacturer, that is installed and adjusted based on ADA or other reduced opening force requirements may not provide sufficient power to reliably close and latch a door.

If arms are ordered separately, there will be a significant difference in price than if purchased with a closer as a complete assembly. Adders are listed below. Add the list price of the option to the list price of the closer and take standard discounts.

Delayed Action Valve

21.03

Check with factory for pricing and availability of plated products.

POA

Closers with non-standard arms

5300 Series 1-6 Closer, 5910 hold open arm, plastic cover	ALM	277.40	145676
	BRZ	277.40	145677
	DBZ	277.40	145678
	GOL	277.40	145679
	BLK	277.40	
5300 Series 1-6 Closer, 5906 extra heavy duty hold open stop arm, plastic cover	ALM	344.34	145681
	BRZ	344.34	145682
	DBZ	344.34	145683
	GOL	344.34	145684
	BLK	344.34	
5300 Series 1-6 Closer, 5907 extra heavy duty stop arm, plastic cover	ALM	288.03	145686
	BRZ	288.03	174460
	DBZ	288.03	145687
	GOL	288.03	164629
	BLK	288.03	
5300 Series 1-6 Closer, 5911 extra heavy duty arm, plastic cover	ALM	288.03	150366
	BRZ	288.03	173792
	DBZ	288.03	152815
	GOL	288.03	-
	BLK	288.03	
5300 Series 1-6 Closer, 5912 extra heavy duty hold open arm, plastic cover (left hand)	ALM	272.29	152972
	BRZ	272.29	-
	DBZ	272.29	154681
	GOL	272.29	-
	BLK	272.29	
5300 Series 1-6 Closer, 5912 extra heavy duty hold open arm, plastic cover (right hand)	ALM	272.29	152973
	BRZ	272.29	-
	DBZ	272.29	154682
	GOL	272.29	-
	BLK	272.29	
5300 Series 1-6 Closer, 5926 pull side stop arm, plastic cover	ALM	285.12	027688
	DBZ	285.12	025167
5300 Series 1-6 Closer, 5927 pull side hold open stop arm, plastic cover	ALM	308.88	026419
	DBZ	308.88	026152



Door Controls - 5300 Series

Description	Finish	2022 List	Stock	Case Qty.	Box Qty.
5300 Series 1-6 Closer, 5956 extra heavy duty hold open cushion stop arm, plastic cover	ALM	452.33	150916		
	BRZ	452.33	171199		
	DBZ	452.33	160007		
	GOL	452.33	-		
	BLK	452.33			

5300 Series 1-6 Closer, 5957 extra heavy duty cushion stop arm, plastic cover	ALM	403.33	149230		
	BRZ	403.33	149807		
	DBZ	403.33	149013		
	GOL	403.33	173080		
	BLK	403.33			

Description	Finish	2022 List	Stock	Case Qty.	Box Qty.
5300 Closer w/ Non Hold Open Stop Track Arm	ALM	285.83	166335	10	1
	BRZ	285.83	167062		
	DBZ	285.83	166336		
	GOL	285.83	167217		
	BLK	285.83			

5300 Closer w/ Hold Open Stop Track Arm	ALM	300.45	166342	10	1
	BRZ	300.45	167225		
	DBZ	300.45	166343		
	GOL	300.45	167234		
	BLK	300.45			

Description	Finish	2022 List	Stock	Case Qty.	Box Qty.
5301 Closer Body Only Adjustable sizes 1-6	ALM	148.98	148811	6	1
	BRZ	148.98	148813		
	DBZ	148.98	148812		
	GOL	148.98	148814		
	BLK	148.98	75827		

5302 Full Plastic Cover 5300 Series	ALM	20.37	88207	25	1
	BRZ	20.37	87873		
	DBZ	20.37	87843		
	GOL	20.37	87785		
	BLK	20.37	78432		

5303 Main Arm Assembly 5300 Series	ALM	40.39	71270	8	1
	BRZ	40.39	71255		
	DBZ	40.39	71254		
	GOL	40.39	71234		
	BLK	40.39	199859		

5304 Standard Screw Pack 5300 Series	ALM	11.76	72356	80	1
	BRZ	11.76	72210		
	DBZ	11.76	72180		
	GOL	11.76	72174		
	BLK	11.76	75942		

5900 Parallel Arm Bracket 5200/5300/5400 Series	ALM	10.28	99140	120	1
	BRZ	10.28	99138		
	DBZ	10.28	99135		
	GOL	10.28	99134		
	BLK	10.28	-		

5901 Pinion Cap 5300/5400 Series	ALM	2.32	99133	200	1
	BRZ	2.32	99132		
	DBZ	2.32	99131		
	GOL	2.32	99130		1
	BLK	2.32	-		



Door Controls - 5300 Series

	Description	Finish	2022 List	Stock	Case Qty.	Box Qty.
	5902 SNB Screw Pack, 1-3/4" Door 5200/5300/5400 Series	BRZ	11.76	99128		
		DBZ	11.76	99127		
		GOL	11.76	99126		
		BLK	11.76	-		
	5903 SNB Screw Pack, 1-3/8" 5200/5300/5400 Series	ALM	11.76	99125	200	1
		BRZ	11.76	99124		
		DBZ	11.76	99123		
		GOL	11.76	99122		
	5904 SNB Screw Pack, 2" Door 5200/5300/5400 Series	ALM	11.76	99121	200	1
		BRZ	11.76	99118		
		DBZ	11.76	99117		
		GOL	11.76	99116		
	5905 SNB Screw Pack, 2-1/4" Door 5200/5300/5400 Series	ALM	11.76	99115	200	1
		BRZ	11.76	99114		
		DBZ	11.76	99113		
		GOL	11.76	99112		
	5906 Extra Heavy Duty Hold Open Stop Arm 5200/5300 Series Can be combined with 5950, spring cushion kit.	ALM	221.09	14583	10	1
		BRZ	221.09	14582		
		DBZ	221.09	14578		
		GOL	221.09	14570		
	5907 Extra Heavy Duty Stop Arm 5200/5300 Series Can be combined with 5950, spring cushion kit.	ALM	110.72	14595	10	1
		BRZ	110.72	14591		
		DBZ	110.72	14587		
		GOL	110.72	14586		
	5908 Long Rod and Shoe 5200/5300 Series	ALM	20.37	35989	25	1
		BRZ	20.37	35988		
		DBZ	20.37	35941		
		GOL	20.37	35929		
	5910 Standard Hold Open Arm 5200/5300 Series If ordered separately 5914, Rev 1 needed for parallel mount.	ALM	88.62	191400		
		BRZ	88.62	191402		
		DBZ	88.62	191401		
		GOL	88.62	191403		
	5911 Extra Heavy Duty Arm 5200/5300 Series	ALM	110.72	73657	10	1
		BRZ	110.72	73656		
		DBZ	110.72	73607		
		GOL	110.72	73487		
	5912 Extra Heavy Duty Hold Open Arm 5200/5300 Series Specify handing when ordering.	ALM	110.72	73446	10	1
		BRZ	110.72	73317		
		DBZ	110.72	73347		
		GOL	110.72	73283		
		BLK	110.72	-		

1. U/M is each unless otherwise noted.



Door Controls - 5300 Series



Description	Finish	2022 List	Stock	Case Qty.	Box Qty.
5913 Blade Stop Spacer 5200/5300/5400 Series	ALM	31.24	73268	15	1
	BRZ	31.24	73244		
	DBZ	31.24	73076		
	GOL	31.24	73074		
	BLK	31.24	68591		



5914 Hold Open Parallel Arm Bracket 5200/5300 Series For standard hold-open arm.	ALM	20.37	191426	60	1
	BRZ	20.37	191431		
	DBZ	20.37	191428		
	GOL	20.37	191432		
	BLK	20.37	71981		



5915 Drop Plate - OH Holder Narrow Rail w/ Mounting Screws 5300 Series For use with full cover.	ALM	47.52	72754	10	1
	BRZ	47.52	72741		
	DBZ	47.52	72750		
	GOL	47.52	72673		
	BLK	47.52	133059		



5916 Drop Plate - Narrow Rail Parallel Arm Cover w/ Mounting Screws 5300 Series For use with full cover.	ALM	47.52	72669	10	1
	BRZ	47.52	72500		
	DBZ	47.52	72509		
	GOL	47.52	72468		
	BLK	47.52	100600		



5917 Drop Plate - Low Clearance Overhead Holder w/ Mounting Screws 5300 Series For use with no cover.	ALM	47.52	72410	10	1
	BRZ	47.52	72281		
	DBZ	47.52	72372		
	GOL	47.52	72264		
	BLK	47.52	100599		



5926 Pull Side Stop Arm 5200/5300 Series	ALM	124.74	40972	10	1
	DBZ	124.74	40968		



5927 Pull Side Hold Open Stop Arm 5200/5300 Series	ALM	148.50	40969	10	1
	DBZ	148.50	40970		



5936 Extra Clearance Bracket 5200/5300 Series	ALM	26.73	129577	48	1
	BRZ	26.73	129578		
	DBZ	26.73	129579		
	GOL	26.73	129580		
	BLK	26.73	100387		



5950 Spring Cushion Kit (sold separately) 5100/5200/5300 Series	ALM	148.62	118353	10	1
	BRZ	148.62	120777		
	DBZ	148.62	120779		
	GOL	148.62	120780		



5956 Extra Heavy Duty Hold Open Cushion Stop Arm 5200/5300 Series Includes 5906 and 5950.	ALM	310.60	118345	10	1
	BRZ	310.60	118346		
	DBZ	310.60	118347		
	GOL	310.60	118348		
	BLK	310.60	084427		



Door Controls - 5300 Series



Description	Finish	2022 List	Stock	Case Qty.	Box Qty.
5957 Extra Heavy Duty Cushion Stop Arm 5200/5300 Series Includes 5907 and 5950.	ALM	267.30	118349	10	1
	BRZ	267.30	118350		
	DBZ	267.30	118351		
	GOL	267.30	118352		
	BLK	267.30	-		
2-659-0141 Non Hold Open Stop Track Arm 5200/5300 Series	ALM	107.16	198619	10	1
2-659-0140 Non Hold Open Stop Track Arm 5200/5300 Series	BRZ	107.16	72247		
2-659-0139 Non Hold Open Stop Track Arm 5200/5300 Series	DBZ	107.16	72238		
2-659-0138 Non Hold Open Stop Track Arm 5200/5300 Series	GOL	107.16	72239		
2-659-0350 Hold Open Stop Track Arm 5200/5300 Series	ALM	123.55	72197	10	1
2-659-0351 Hold Open Stop Track Arm 5200/5300 Series	BRZ	123.55	72198		
2-659-0352 Hold Open Stop Track Arm 5200/5300 Series	DBZ	123.55	72192		
2-659-0353 Hold Open Stop Track Arm 5200/5300 Series	GOL	123.55	72193		

Track arms only available in painted finishes shown

1. U/M is each unless otherwise noted.



Door Controls - 5400 Series



Description	Finish	2022 List	Stock	Case Qty.	Box Qty.
5400 Series	ALM	142.92	85450	6	1
Grade 2	DBZ	142.92	85449		
Size 2 - 5	BLK	142.92	36779		
5400 Series Adders:		19.60			
Optional backcheck available (add to list price)					
5401	ALM	109.95	67779	6	1
5400 Series Closer Body Only	DBZ	109.95	76407		
Size 2 - 5	BLK	109.95	76416		
5402	ALM	20.37	77881		
Plastic Cover	DBZ	20.37	77819		
5400 Series					
5403	ALM	36.06	71659	8	1
Main Arm Assembly	DBZ	36.06	71218		
5400 Series	BLK	36.06	-		
5404	ALM	11.17	72336	80	1
Standard Screw Pack	DBZ	11.17	72171		
5400 Series	BLK	11.17	-		



Door Controls - 5400 Series






Description	Finish	2022 List	Stock	Case Qty.	Box Qty.
5900 Parallel Arm Bracket 5200/5300/5400 Series	ALM	10.28	99140	120	1
	DBZ	10.28	99135		
	BLK	10.28	-		
5924 Pinion Cap 5400 Series	ALM	2.32	006089	200	1
	DBZ	2.32	006090		
	BLK	2.32	-		
5902 SNB Screw Pack, 1-3/4" Door 5200/5300/5400 Series	ALM	11.76	9129	200	1
	DBZ	11.76	9127		
	BLK	11.76	-		
5903 SNB Screw Pack, 1-3/8" Door 5200/5300/5400 Series	ALM	11.76	99125	200	1
	DBZ	11.76	99123		
	BLK	11.76	-		
5904 SNB Screw Pack, 2" Door 5200/5300/5400 Series	ALM	11.76	99121	200	1
	DBZ	11.76	99117		
	BLK	11.76	-		
5905 SNB Screw Pack, 2-1/4" Door 5200/5300/5400 Series	ALM	11.76	99115	200	1
	DBZ	11.76	99113		
	BLK	11.76	-		
5913 Blade Stop Spacer 5200/5300/5400 Series	ALM	31.24	73268	15	1
	DBZ	31.24	73076		
	BLK	31.24	-		

1. U/M is each unless otherwise noted.



Door Controls - Electromagnetic Holders

	Description	Voltage	Finish	2022 List	Stock	Case Qty.	Box Qty.	
	380F Electromagnetic Door Holder Flush Mount	12 & 24	US3	309.30	122598	25	1	
			L2	309.30	113307			
			LS	309.30	107216			
			24 & 120	US3	309.30	-		
				L2	309.30	143678		
				LS	309.30	107443		
			24 & 220	US3	309.30	142090		
				L2	309.30	-		
				LS	309.30	124474		
	380G Electromagnetic Door Holder Floor Mount (Single Door)	12 & 24	US3	467.83	133360	18	1	
			L2	467.83	-			
			LS	467.83	133362			
			24 & 120	US3	467.83	-		
				L2	467.83	-		
				LS	467.83	111432		
			24 & 220	US3	467.83	-		
				L2	467.83	122342		
				LS	467.83	139500		
	380H Electromagnetic Door Holder Floor Mount (Double Door)	12 & 24	US3	547.13	-	6	1	
			L2	547.13	-			
			LS	547.13	-			
			24 & 120	US3	547.13	-		
				L2	547.13	-		
				LS	547.13	114881		
			24 & 220	US3	547.13	-		
				L2	547.13	-		
				LS	547.13	-		
	380R Electromagnetic Door Holder Recessed Mount	12 & 24	US3	309.30	129952	25	1	
			L2	309.30	130390			
			LS	309.30	107442			
			24 & 120	US3	309.30	-		
				L2	309.30	-		
				LS	309.30	107446		
			24 & 220	US3	309.30	-		
				L2	309.30	-		
				LS	309.30	141037		
	380S Electromagnetic Door Holder Surface Mount	12 & 24	US3	340.96	114503	25	1	
			L2	340.96	113961			
			LS	340.96	107441			
			24 & 120	US3	340.96	120377		
				L2	340.96	116868		
				LS	340.96	107444		
			24 & 220	US3	340.96	-		
				L2	340.96	139499		
				LS	340.96	-		



Door Controls - Electromagnetic Holders

Description	Size	Finish	2022 List	Stock	Case Qty.	Box Qty.
 381A Adjustable Extension Rods	1-1/2"	US3	25.54	107528	25	1
		L2	25.54	107529		
		LS	25.54	107527		
	2"	US3	27.03	107532		
		L2	27.03	107533		
		LS	27.03	107530		
	4"	US3	30.12	107535		
		L2	30.12	107536		
		LS	30.12	107534		
 381B Surface Back Box	4"	US3	47.58	107547	50	1
		L2	47.58	107548		
		LS	47.58	107545		
 381C Catch Disc	2"	US3	31.84	107550	25	1
		L2	31.84	107551		
		LS	31.84	107549		
 381E Extension Rods	1/2"	US3	20.73	107450	25	1
		L2	20.73	107451		
		LS	20.73	107449		
	1"	US3	22.33	107453		
		L2	22.33	107452		
		LS	22.33	107455		
	1-1/2"	US3	23.88	107458		
		L2	23.88	107460		
		LS	23.88	107457		
	2"	US3	25.54	107467		
		L2	25.54	107468		
		LS	25.54	107462		
	3"	US3	27.03	107489		
		L2	27.03	107490		
		LS	27.03	107488		
	4"	US3	28.57	107492		
		L2	28.57	107493		
		LS	28.57	107491		
 381H Hardware Package	-	-	27.03	165884	25	1
 381S Catch Plate Assembly	-	US3	79.30	107543	50	1
	-	L2	79.30	107544		
	-	LS	79.30	107542		

1. U/M is each unless otherwise noted.



Door Controls - Electromagnetic Holders



Description	Voltage	Finish	2022 List	Stock	Case Qty.	Box Qty.
381W Extension Wrenches (2 pcs.)		-	6.36	107552	25	1



Door Controls - Overhead Door Holders and Stops



Description	Material	Finish	2022 List	Stock	Case Qty.	Box Qty.
6015 Series						
Medium Duty Surface Mount						
Grade 2						
Friction	Stainless steel	US32D/630	202.14	140725	6	1
Size 1	Steel	US10B/640	202.14	140826		
20" - 33" Door Opening		ALM/powder coated	148.32	140886		
Friction	Stainless steel	US32D/630	202.14	140726		
Size 2	Steel	US10B/640	202.14	140827	6	1
33" - 51" Door Opening		ALM/powder coated	148.32	140887		

6015 Series						
Medium Duty Concealed Mount						
Grade 2						
Friction	Stainless steel	US32D/630	202.14	140731	6	1
Size 1	Steel	US10B/640	202.14	140832		
18" - 33" Door Opening		ALM/powder coated	148.32	140892		
Friction	Stainless steel	US32D/630	202.14	140732	6	1
Size 2	Steel	US10B/640	202.14	140833		
33" - 51" Door Opening		ALM/powder coated	148.32	140893		



6016 Series						
Medium Duty Surface Mount						
Grade 2						
Stop ONLY	Stainless steel	US32D/630	202.14	140720	6	1
Size 1	Steel	US10B/640	202.14	140822		
20" - 33" Door Opening		ALM/powder coated	148.32	140882		
Stop ONLY	Stainless steel	US32D/630	202.14	140721	6	1
Size 2	Steel	US10B/640	202.14	140823		
33" - 51" Door Opening		ALM/powder coated	148.32	140883		

6016 Series						
Medium Duty Concealed Mount						
Grade 2						
Stop ONLY	Stainless steel	US32D/630	202.14	140727	6	1
Size 1	Steel	US10B/640	202.14	140828		
18" - 33" Door Opening		ALM/powder coated	148.32	140888		
Stop ONLY	Stainless steel	US32D/630	202.14	140728	6	1
Size 2	Steel	US10B/640	202.14	140829		
33" - 51" Door Opening		ALM/powder coated	148.32	140889		

1. U/M is each unless otherwise noted.



Door Controls - Overhead Door Holders and Stops



Description	Material	Finish	2022 List	Stoc k	Case Qty.	Box Qty.
6017 Series						
Medium Duty Surface Mount						
Grade 2						
Hold Open	Stainless steel	US32D/630	202.14	140722	6	1
Size 1	Steel	US10B/640	202.14	140824		
20" - 33" Door Opening		ALM/powder coated	148.32	140884		
	Stainless steel	US32D/630	202.14	140723	6	1
Hold Open	Steel	US10B/640	202.14	140825		
Size 2		ALM/powder coated	148.32	140885		
33" - 51" Door Opening						
6017 Series						
Medium Duty Concealed Mount						
Grade 2						
Hold Open	Stainless steel	US32D/630	202.14	140729	6	1
Size 1	Steel	US10B/640	202.14	140830		
18" - 33" Door Opening		ALM/powder coated	148.32	140890		
	Stainless steel	US32D/630	202.14	140730	6	1
Hold Open	Steel	US10B/640	202.14	140831		
Size 2		ALM/powder coated	148.32	140891		
33" - 51" Door Opening						
6000 Series Accessories						
Surface Mounted End Cap and	2-659-0101	US26D	16.28	141691		
Spring Replacement Kit	2-659-0102	US10B	16.28	141692		
	2-659-0103	US3	16.28	141693		
6000 Series Accessories						
Concealed Mounted End Cap and	2-659-0104	-	16.28	141695		
Spring Replacement Kit						
6000 Series Accessories						
Hold Open Replacement Kit	2-659-0105	-	24.35	141696		
6000 Series Accessories						
Friction Replacement Kit	2-659-0106	-	24.35	141697		
6000 Series Screwpacks						
Standard screwpack includes	2-659-0098	US26D	12.24	141688		
machine screws, wood screws, sex	2-659-0099	US10B	12.24	141689		
nuts & bolts for 1-3/4" doors, arm						
set screws, Allen wrench, for both						
concealed and surface mounted						
6000 Series Screwpacks						
SNB screwpack includes sex nuts	2-659-0107	US26D	9.56	141698		
and bolts for 1-3/8" doors	2-659-0108	US10B	9.56	141699		
6000 Series Screwpacks						
SNB screwpack includes sex nuts	2-659-0110	US26D	9.56	141701		
and bolts for 2" doors	2-659-0111	US10B	9.56	141702		
6000 Series Screwpacks						
SNB screwpack includes sex nuts	2-659-0113	US26D	9.56	141704		
and bolts for 2-1/4" doors	2-659-0114	US10B	9.56	141705		



Door Controls - Overhead Door Holders and Stops



Description	Material	Finish	2022 List	Stock	Case Qty.	Box Qty.
7015 Series						
Heavy Duty Surface Mount						
Grade 1						
Friction	Stainless steel	US32D/630	384.08	140712	6	1
Size 1	Steel	US10B/640	384.08	140814		
24" - 40" Door Frame Opening						
Friction	Stainless steel	US32D/630	384.08	140713	6	1
Size 2	Steel	US10B/640	384.08	140815		
41" - 55" Door Opening						

7015 Series
Heavy Duty Concealed Mount
Grade 1

Friction	Stainless steel	US32D/630	311.69	10510	10	1
Size 3	Steel	US10B/640	264.41	10532		
27" < 30" Door Frame Opening						
Friction	Stainless steel	US32D/630	324.76	10412	10	1
Size 4	Steel	US10B/640	276.90	10511		
30" < 36" Door Frame Opening						
Friction	Stainless steel	US32D/630	351.37	10513	10	1
Size 5	Steel	US10B/640	301.03	10512		
36" < 40" Door Frame Opening						
Friction	Stainless steel	US32D/630	380.86	10507	10	1
Size 6	Steel	US10B/640	315.75	10514		
40" < 44" Door Frame Opening						
Friction	Stainless steel	US32D/630	395.99	10503	10	1
Size 7	Steel	US10B/640	327.23	10508		
44" < 52" Door Frame Opening						



7016 Series
Heavy Duty Surface Mount
Grade 1

Stop ONLY	Stainless steel	US32D/630	384.08	140680	6	1
Size 1	Steel	US10B/640	384.08	140805		
24" - 40" Door Frame Opening						
Stop ONLY	Stainless steel	US32D/630	384.08	140701	6	1
Size 2	Steel	US10B/640	384.08	140807		
41" - 55" Door Frame Opening						



7016 Series
Heavy Duty Concealed Mount
Grade 1

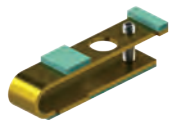
Stop ONLY	Stainless steel	US32D/630	289.14	10488	10	1
Size 3	Steel	US10B/640	242.93	10491		
27" < 30" Door Frame Opening						
Stop ONLY	Stainless steel	US32D/630	302.27	10481	10	1
Size 4	Steel	US10B/640	254.34	10483		
30" < 36" Door Frame Opening						
Stop ONLY	Stainless steel	US32D/630	328.88	10476	10	1
Size 5	Steel	US10B/640	278.55	10475		
36" < 40" Door Frame Opening						
Stop ONLY	Stainless steel	US32D/630	358.31	10469	10	1
Size 6	Steel	US10B/640	293.26	10472		
40" < 44" Door Frame Opening						
Stop ONLY	Stainless steel	US32D/630	373.51	10465	10	1
Size 7	Steel	US10B/640	304.75	10470		
44" < 52" Door Frame Opening						



Door Controls - Overhead Door Holders and Stops



Description	Material	Finish	2022 List	Stock	Case Qty.	Box Qty.
7017 Series						
Heavy Duty Surface Mount						
Grade 1						
Hold Open						
Size 1	Stainless steel	US32D/630	384.08	140710	6	1
24" - 40" Door Frame Opening	Steel	US10B/640	384.08	140810		
<hr/>						
Hold Open						
Size 2	Stainless steel	US32D/630	384.08	140711	6	1
41" - 55" Door Frame Opening	Steel	US10B/640	384.08	140813		
<hr/>						
7017 Series						
Heavy Duty Concealed Mount						
Grade 1						
Hold Open						
Size 3	Stainless steel	US32D/630	328.47	10448	10	1
27" - 30" Door Frame Opening	Steel	US10B/640	282.60	10460		
<hr/>						
Hold Open						
Size 4	Stainless steel	US32D/630	341.95	10443	10	1
30" - 36" Door Frame Opening	Steel	US10B/640	293.68	10442		
<hr/>						
Hold Open						
Size 5	Stainless steel	US32D/630	368.14	10432	10	1
36" < 40" Door Frame Opening	Steel	US10B/640	317.81	10439		
<hr/>						
Hold Open						
Size 6	Stainless steel	US32D/630	398.05	10428	10	1
40" < 44" Door Frame Opening	Steel	US10B/640	332.52	10427		
<hr/>						
Hold Open						
Size 7	Stainless steel	US32D/630	413.18	10421	10	1
44" < 52" Door Frame Opening	Steel	US10B/640	344.42	10420		
<hr/>						
7000 Series Accessories						
Surface Mounted End Cap and Spring Replacement Kit	2-659-0119	US26D	22.28	141711		
	2-659-0120	US10B	22.28	141712		
<hr/>						
7000 Series Accessories						
Concealed Mounted End Cap and Spring Replacement Kit	2-659-0122	-	22.28	141714		
<hr/>						
7000 Series Accessories						
Hold Open Replacement Kit	2-659-0123	-	26.97	141715		
<hr/>						
7000 Series Accessories						
Friction Replacement Kit	2-659-0124	-	26.97	141716		



Door Controls - Overhead Door Holders and Stops



Description	Material	Finish	2022 List	Stock	Case Qty.	Box Qty.
7000 Series Screwpacks Standard screwpack includes machine screws, wood screws, sex nuts & bolts for 1-3/4" doors, arm set screws, Allen wrench, for both concealed and surface mounted	2-659-0116 2-659-0117	US26D US10B	18.59 18.59	141707 141708		
7000 Series Screwpacks SNB screwpack includes sex nuts and bolts for 1-3/8" doors	2-659-0125 2-659-0126	US26D US10B	13.48 13.48	141717 141718		
7000 Series Screwpacks SNB screwpack includes sex nuts and bolts for 2" doors	2-659-0128 2-659-0129	US26D US10B	13.48 13.48	141720 141721		
7000 Series Screwpacks SNB screwpack includes sex nuts and bolts for 2-1/4" doors	2-659-0131 2-659-0132	US26D US10B	13.48 13.48	141723 141724		

1. U/M is each unless otherwise noted.

