


## TABLE OF CONTENTS

|  |        |   |       |
|--|--------|---|-------|
| <b>A</b>   |        | Top or Bottom Rod Replacement Kit .....   | 45    |
| <b>Accessories, 4500 Series Grade 1</b>                      |        | Trim Handing Pin.....   | 46    |
| Alarm Kit .....  | 25     | <b>C</b>  |       |
| Alarm Kit Latchbolt Monitor Switch.....                      | 28     | <b>Cylinders</b>  |       |
| Alarm Kit Tamper Switch.....                                 | 29     | Cylinder Collar, 4500 Trim.....   | 50-51 |
| Concealed Vertical Rod Bottom Latch Assembly.....            | 29     | Cylinder Collar, 4700 Trim.....   | 51    |
| Concealed Vertical Rod Top Latch Assembly .....              | 29     | Mortise.....  | 50    |
| Cylinder Cup Spacer 45PN/47PN .....                          | 29, 47 | Retaining Cup.....  | 50    |
| Cylinder Dogging Conversion Kit.....                         | 23     | Rim.....  | 49    |
| End Cap Replacement Packs (4500/4600 standard & flush) ..... | 26-27  | <b>E</b>  |       |
| Extension Rod Kit - 24".....                                 | 25     | <b>Exit Devices, Grade 1</b>  |       |
| Extension Rod Kit - 36" .....                                | 25     | How to Order .....  | 6     |
| Hex Key for Dogging.....                                     | 29     | 4500 Rim Device.....  | 9     |
| Less Bottom Rod Fire Bolt Kit.....                           | 28     | 4500 Mortise Lock Exit Device.....  | 12-13 |
| Less Bottom Rod Replacement Head Cover Plug .....            | 28     | 4500 Concealed Vertical Rod Device .....  | 11    |
| Photoluminescent Push Bar .....                              | 29     | 4500 Concealed Vertical Rod Device Less Bottom Rod .....                              | 12    |
| Replacement Head Covers.....                                 | 24-25  | 4500 Dummy Push Pad Device.....   | 13    |
| Rod to Rod Connector .....                                   | 28     | 4500 Surface Vertical Rod Device.....   | 10    |
| Rod Guide Replacement Pack.....                              | 26     | 4500 Surface Vertical Rod Device Less Bottom Rod .....                                | 9     |
| Spring Cage/Hanging Pin Replacement Pack.....                | 27     | 4500 Electric Modifications, Power Supplies, and Alarmed<br>Devices .....             | 4-5   |
| Surface Vertical Rod Top Latch Assembly.....                 | 24     | <b>Exit Devices, Grade 1 Narrow Stile</b>   |       |
| Surface Vertical Rod Bottom Latch Assembly .....             | 23     | How to Order .....  | 7     |
| Screwpacks .....   | 27-28  | 4600 Narrow Stile Rim Device .....  | 30    |
| Top or Bottom Latch Cover Replacement Pack .....             | 27     | 4600 Concealed Vertical Rod Device .....  | 30    |
| Top or Bottom Rod Replacement Kits.....                      | 24     | 4600 Concealed Vertical Rod Device Less Bottom Rod .....                              | 31    |
| <b>Accessories, 4600 Series Grade 1 Narrow Stile</b>         |        | 4600 Electric Modifications, Power Supplies, and Alarmed<br>Devices .....             | 4-5   |
| Alarm Kit .....  | 36     | 4500/4600 Dummy Push Pad Device .....   | 13    |
| Alarm Kit Latchbolt Monitor Switch.....                      | 36     | <b>Exit Devices, Grade 1</b>  |       |
| Alarm Kit Tamper Switch.....                                 | 37     | How to Order .....  | 8     |
| Cylinder Dogging Conversion Kit.....                         | 35     | 4700 Rim Device.....  | 39    |
| End Cap Replacement Packs (standard and flush).....          | 37     | 4700 Surface Vertical Rod Device .....  | 39    |
| Hex Key for Dogging.....                                     | 37     | <b>M</b>  |       |
| Rim Replacement Head Cover .....                             | 37     | <b>Mullions</b>   |       |
| <b>Accessories, 4700 Series Standard Duty</b>                |        | Mullion Set - Keyed Removable.....  | 49    |
| Bottom Latch Assembly.....                                   | 44     | Mullion Set - Non-Keyed Removable .....   | 48    |
| Bottom Latch Cover .....                                     | 46     | Mullion Tube - Keyed Removable .....  | 48    |
| Cylinder Cup Spacer 45PN/47PN .....                          | 29, 47 | Mullion Tube - Non-Keyed Removable .....  | 48    |
| End Cap Replacement Pack.....                                | 47     | Stabilizer - Non-Keyed & Keyed Removable.....   | 49    |
| Extension Rod Kit - 24" .....                                | 45     | Stabilizer - Non-Keyed & Keyed Removable .....  | 48    |
| Extension Rod Kit - 36" .....                                | 45     | Top/Bottom Bracket Set - Keyed Removable.....   | 49    |
| Hex Key for Dogging.....                                     | 47     | Top/Bottom Bracket Set - Non-Keyed Removable.....                                     | 48    |
| Replacement Dogging Plates.....                              | 45     | 03/28/2024  |       |
| Replacement Head Covers .....                                | 45     | www.hagerco.com   |       |
| Rod to Rod Connector .....                                   | 47     |  |       |
| Rod Guide Replacement.....                                   | 46     | 1   |       |
| Screwpacks .....   | 46, 47 |   |       |
| Top Latch Assembly .....                                     | 44     |   |       |
| Top Latch Cover.....   | 46     |   |       |

# Exit Devices

## S

### Shim Kit, 4500 Series Grade 1

|                                     |    |
|-------------------------------------|----|
| Shim Kit, Rim Device.....           | 24 |
| Shim Kit, Surface Vertical Rod..... | 24 |

### Shim Kit, 4600 Series Grade 1 Narrow Stile

|  |    |
|--|----|
| Shim Kit, Narrow Stile Rim Device..... | 36 |
|--|----|

### Shim Kit, 4700 Series Standard Duty

|                                     |    |
|-------------------------------------|----|
| Shim Kit, Rim Device.....           | 45 |
| Shim Kit, Surface Vertical Rod..... | 45 |

### Strikes, 4500 Series Grade 1

|  |        |
|--|--------|
| Concealed Vertical Rod, Top Strike, Fire Rated.....  | 26     |
| Concealed Vertical Rod, Top Strike, Standard.....    | 26     |
| Double Door Strike, Standard.....                    | 22     |
| Mortise Device, Fire Rated.....                      | 29     |
| Mortise Device, Standard.....                        | 29     |
| Mullion, Strikes.....                                | 48, 49 |
| Rim Device, Fire Rated.....                          | 22     |
| Rim Device, Standard.....                            | 22     |
| Surface Vertical Rod, Bottom Strike, Fire Rated..... | 23     |
| Surface Vertical Rod, Bottom Strike, Standard.....   | 23     |
| Surface Vertical Rod, Top Strike, Fire Rated.....    | 23     |
| Surface Vertical Rod, Top Strike, Standard.....      | 23     |
| Threshold Strike, Standard.....                      | 22     |

### Strikes, 4600 Series Grade 1 Narrow Stile

|                       |    |
|-----------------------|----|
| Blade Stop.....       | 36 |
| Rim, Fire Rated.....  | 35 |
| Rim, Standard.....    | 35 |
| Semi-Flush Mount..... | 36 |
| Single Rabbet.....    | 36 |

### Strikes, 4700 Series Standard Duty

|  |        |
|--|--------|
| Double Door Strike, Standard.....                  | 44     |
| Mullion, Strikes.....                              | 48, 49 |
| Rim Device, Standard.....                          | 44     |
| Surface Vertical Rod, Bottom Strike, Standard..... | 44     |
| Surface Vertical Rod, Top Strike, Standard.....    | 44     |
| Threshold Strike, Standard.....                    | 44     |

## T

### Trim, 4500 Series Grade 1

|                                   |       |
|-----------------------------------|-------|
| Anti-Vandal Pull.....             | 22    |
| Blank Escutcheon.....             | 13-14 |
| Blank Escutcheon, Mortise.....    | 14-15 |
| Cylinder Escutcheon.....          | 15-16 |
| Cylinder Escutcheon, Mortise..... | 16-17 |
| Dummy Trim.....                   | 17-18 |
| Dummy Trim, Mortise.....          | 18-19 |
| Night Latch.....                  | 19-20 |
| Night Latch, Mortise.....         | 20-21 |
| Pull Plate Trim.....              | 21    |

### Trim, 4600 Series Grade 1 Narrow Stile

|                          |       |
|--------------------------|-------|
| Blank Escutcheon.....    | 32    |
| Cylinder Escutcheon..... | 32-33 |
| Dummy Trim.....          | 33    |
| Night Latch.....         | 34-35 |

### Trim, 4700 Series Standard Duty

|                               |    |
|-------------------------------|----|
| Blank Escutcheon.....         | 39 |
| Cylinder Escutcheon.....      | 40 |
| Dummy Trim.....               | 40 |
| Key-In-Lever Trim.....        | 42 |
| Night Latch.....              | 41 |
| Pull Plate Trim.....          | 43 |
| Raised Lip - Dummy.....       | 44 |
| Raised Lip - Night Latch..... | 44 |

### **INTRODUCTION**

Every model in Hager's line of exit devices is designed and engineered to assure you and your customers years of superior performance. Hager exit devices use fewer moving parts and are constructed with high-quality features.

Hager exit devices were designed with ease of installation in mind. We package our exit devices for convenience and versatility, with thru-bolts included for every model, slotted strikes, and non-handed designs. Hager offers escutcheon trim available in four functions, along with many other trim options.

### **Cancellation Notification**

Cancellation for made-to-order items must be communicated within 48 hours of order placement.

### **New Finish**

Painted flat black finish (BHMA 693) is now available. Use BLK to designate finish. Extended lead time and MOQ may apply.



## Exit Devices

### ELECTRIC MODIFICATIONS - For use with 4500 Series and 4600 Series exit devices

| FUNCTION  | FUNCTION # | DESCRIPTION   | ADD TO LIST PRICE |
|---|------------|---|-------------------|
| Request to Exit   | RX         | Used to shunt an alarm, activate an alarm, provide release of magnetic locks, or signal a console.  | \$368.38          |
| Dual Request to Exit  | RX2        | Features two SPDT switches.   | \$442.31          |
| Latchbolt Monitoring  | LM         | An internal SPDT switch that monitors the latchbolt to signal both egress and access of an opening.   | \$368.38          |
| Latchbolt Monitoring/<br>Request to Exit  | RXLM       | Two internal SPDT switches that monitor the latchbolt and the pushbar simultaneously.   | \$457.08          |
| Electric Trim*  | ET*        | Provides the means of locking or unlocking outside lever trim controls remotely. Trim works with both 12V or 24V and is field selectable between Fail Safe and Fail Secure.   | \$678.88          |
| Authorized Ingress/Key<br>Monitoring*   | AI*        | An internal SPDT switch that monitors the operation of the outside trim. Must be ordered with the device.   | \$383.15          |
| Request to Exit/<br>Authorized Ingress*   | RXAI*      | Two internal SPDT switches that monitors the pushbar and outside trim simultaneously. Must be ordered with the device.  | \$457.08          |
| Delayed Egress  | DE         | Delays egress for 15 or 30 seconds when unauthorized egress is initiated. Wall mount controller (2-679-0630) provides digital countdown display with verbal instructions or alarm tone only and must be ordered separately, list price \$1,781.12. Requires 3902 Mortise Cylinder, 1-1/8" long. Longer cylinders can be used with a collar. | \$1,613.12        |
| Onboard Delayed Egress  | OBDE*      | Delays egress for 15 seconds (30 seconds optional) when unauthorized egress is initiated. Modification can be made to 4501 or 4601 exit devices. Requires 3902 Mortise Cylinder, 1-1/8"-1-3/8" length, 3978 Cloverleaf or equivalent tailpiece required.  | \$3,622.74        |
| Motor Driven Electric Latch<br>Retraction   | MLR        | Provides the means of locking or unlocking exit devices remotely using an electric motor. Recommend Hager 2903 or 2904 Power Supply.  | \$1,382.64        |
| Motor Driven Electric Latch<br>Retraction with Request to<br>Exit                             | MLRX       | Provides the means of locking or unlocking exit devices remotely using an electric motor, along with an SPDT switch. Recommend Hager 2903 or 2904 Power Supply.   | \$1,877.40        |
| Motor Driven Electric Latch<br>Retraction with Request to<br>Exit and Latchbolt<br>Monitoring | MLRXLM     | Provides the means of locking or unlocking exit devices remotely using an electric motor, along with two internal SPDT switches that monitor the pushbar and latchbolt simultaneously. Recommend Hager 2903 or 2904 Power Supply.   | \$1,877.40        |
| Motor Driven Electric Latch<br>Retraction with Latchbolt<br>Monitoring                        | MLRLM      | Provides the means of locking or unlocking exit devices remotely using an electric motor along with an internal SPDT switch that monitors the latchbolt. Recommend Hager 2903 or 2904 Power Supply.   | \$1,491.16        |
| Electrified Mortise Exit<br>Device  | EU/EL      | Provides the means of locking or unlocking outside lever trim controls remotely Field selectable between Fail Safe (EL) or Fail Secure (EU). Works with both 12V and 24V.   | \$678.88          |

\*Available on 4500 Series only.



## POWER SUPPLIES

| PRODUCT # | DESCRIPTION   | LIST PRICE                                 |
|-----------|---|--|
| 2903      | Provides 24 Volt DC power for Fail Safe or Fail Secure locking devices and interface with building alarm controls, card readers, keypads, and other door controls | Reference Electrified Products for Pricing |
| 2904      | Provides 24 Volt DC power and control for openings with an electrified locking device and automatic door operator   | Reference Electrified Products for Pricing |
| 2908      | Provides up to 1 amp of 12 or 24 Volt DC power.   | Reference Electrified Products for Pricing |
| 2909      | Provides up to 2 amps of 12 or 24 Volt DC power.  | Reference Electrified Products for Pricing |

## QUICK CONNECT

Available for use with 4500 and 4600 Series Electrifications ED, LM, MLR, RX and AI (4500 only). Compatible with Hager Quick Connect Harness Cables which can plug into Hager hinges with quick connect for quick and accurate wiring of the door. No additional charge.

## ALARMED DEVICES

### 4501/4601 ALK - Alarm Kit

Add \$427.53 to the list price of the device

### 4501/4601 ALM - ALK with Latch Monitor Switch (recommended for use with SVR devices)

Add \$574.05 to the list price of the device

### 4501/4601 ALT - ALK with Tamper Switch

Add \$574.05 to the list price of the device

### 4501/4601 ALL - ALK with Latch Monitor and Tamper Switch

Add \$720.56 to the list price of the device

Note: Alarm kit components may be purchased separately.



# Exit Devices

## 4500 SERIES EXIT DEVICE

### 4501

### RIM

### FR 36"

### US3

### 1-3/4"

### ALK

#### Type

- RIM - Rim Device
- SVR - Surface Vertical Rod
- LBR - Surface Vertical Rod  
Less Bottom Rod<sup>1</sup>
- CVR - Concealed Vertical Rod
- CLB - Concealed Vertical Rod  
Less Bottom Rod<sup>1</sup>
- DMY - Dummy Push Pad
- MRT - Mortise Device (MC, MB, MD)
- MRTN - Mortise Night Latch Device (MN)

#### Product Group

4500 Series, Grade 1

#### Rating

- FR - Fire-Rated
- O - Non-Fire Rated
- CD - Cylinder Dogging
- CDW - Cylinder Dogging and Windstorm Rated
- LD - Less Dogging
- WR - Windstorm Rated
- FW - Windstorm and Fire-Rated

#### Door Size<sup>2</sup>

- 36"
- 48"
- 36" x 84"
- 36" x 96"
- 48" x 84"
- 48" x 96"

#### Finish

- US3
- US4
- US10B
- US26
- US26D
- US32D
- BLK<sup>7</sup>

#### Door Thickness

- 1-5/8"
- 1-3/4"
- 2"
- 2-1/2"
- 3"

#### Electric Modifications

- AI - Authorized Ingress<sup>3</sup>
- ALK - Alarm Kit
- ALL - Alarm Kit w/ Tamper Switch and Latch Monitor
- ALM - Alarm Kit w/ Latch Monitor
- ALT - Alarm Kit w/ Tamper Switch
- DE - Delayed Egress
- OBDE - Onboarded Delayed Egress
- LM - Latchbolt Monitor<sup>3</sup>
- RX - Request to Exit
- RX2 - Dual Request to Exit
- RXAI - Request to Exit w/ Authorized Ingress<sup>3</sup>
- RXLM - Request to Exit w/ Latchbolt Monitor<sup>3</sup>
- MLR - Motor Driven Electric Latch Retraction
- MLRX - Motor Driven Electric Latch Retraction w/ Request to Exit
- MLRLM - Motor Driven Electric Latch Retraction w/Latchbolt Monitoring<sup>3</sup>
- MLRXLML - Motor Driven Electric Latch Retraction w/Request to Exit & Latchbolt Monitoring<sup>3</sup>
- EUEL1224 - Fail Secure/Fail Safe, 12/24 Volt <sup>6</sup>

## 4500 SERIES TRIM

### 45

### CE

### ARC

### US3

### 1-3/4"

### TW

#### Product Group

45 - 4500 Series, Grade 1

#### Trim/Function

- BE - Blank Escutcheon  
Function 14, always operable
- CE - Cylinder Escutcheon  
Function 08, key locks/unlocks
- DT - Dummy Trim  
Function 02, pull when dogged down
- ET - Electric Escutcheon Trim (E05/E06)
- NL - Night Latch (1-3/4" to 2-1/2" doors)  
Function 03, key retracts latchbolt
- PD - Pull Plate Dummy Trim (Not available for CVR device)  
Function 02, pull when dogged down
- PN - Pull Plate Night Latch (Not available for CVR device)  
Function 03, key retracts latchbolt
- PT - Thumpiece Entrance (Not available for CVR device)  
Function 05, key locks or unlocks thumpiece
- MB - Mortise Blank Escutcheon<sup>4</sup>  
Function 14, always operable
- MC - Mortise Cylinder Escutcheon<sup>4</sup>  
Function 08, key locks/unlocks
- MD - Mortise Dummy Trim<sup>4</sup>  
Function 02, pull when dogged down
- MN - Mortise Night Latch<sup>4</sup>  
Function 03, key retracts latchbolt

#### Lever Style

- ARC - Archer
- AUG - August
- WLM - William
- WTN - Withnell
- CHA - Charles
- JHN - Johnston<sup>5</sup>
- JOS - Joshua
- LOU - Louis
- WRN - Warren<sup>5</sup>

#### Finish

- US3
- US4
- US10B
- US26
- US26D
- US32D (pull plate trim only)
- BLK<sup>7</sup>

#### Door Thickness

- 1-5/8"
- 1-3/4"
- 2"
- 2-1/2"
- 3"

#### Options

- TW - Tactile Warning
- A - Antimicrobial Coating  
(US26D and US32D only)

<sup>1</sup>Fire-rated LBR and CLB devices must be ordered in pairs of vertical rod devices or can be used in conjunction with an approved automatic or constant latching flush bolt. When ordering pairs, specify one device LBR and second device LBR with fire bolt, for example: 4501 LBR Fire 36" x 84" plus 4501 LBR Fire 36" x 84" E0 with bolt OR 4501 LBR Fire 36" x 84" plus an approved automatic constant latching flush bolt.

<sup>2</sup>24" door size available with extended lead times. Add \$486.69 to 36" list price. For additional information contact Hager customer service.

<sup>3</sup>Not available on Mortise Exit Devices.

<sup>4</sup>Mortise trim does not match centerline of other 4500 Series trim. Cannot be used with 4500 Series Rim or Vertical Rod devices.

<sup>5</sup>Johnston and Warren lever designs are handed. Specify LHR/RH or RHR/LH when ordering.

<sup>6</sup>Only applicable to 4501 MRTN devices.

<sup>7</sup>Extended lead time for flat black finish.

#### Notes:

- a. Mortise cylinder 3902 is required for use with cylinder escutcheon trim and pull plate with thumpiece trim and is sold separately.
- b. Rim cylinder with long tailpiece 3901 is required for use with night latch trim and is sold separately.
- c. For more cylinder information, please refer to Cylinder, Core & Keying in the Locks section of the catalog.
- d. If using shim kit, specify total door thickness including shims.
- e. ET Trim and EU/EL work with both 12V or 24V and are field-selectable between Fail Safe (EL) or Fail Secure (EU).



4600 SERIES EXIT DEVICE

4601

**Product Group**

4600 Series, Grade 1

RIM

**Type**

RIM - Rim Device  
 CVR - Concealed Vertical Rod Device  
 CLB - Concealed Vertical Rod  
 Less Bottom Rod

FR

**Rating**

FR - Fire Rated<sup>6</sup>  
 O - Non-Fire Rated  
 CD - Cylinder Dogging  
 LD - Less Dogging

36"

**Size**

36"  
 48"

US3

**Finish**

US3  
 US4  
 US10B  
 US26  
 US26D  
 US32D  
 BLK<sup>1</sup>

1-3/4"

**Door Thickness**

1-5/8"<sup>6</sup>  
 1-3/4"  
 2"<sup>6</sup>  
 2-1/2"<sup>6</sup>  
 3"<sup>6</sup>

MLR

**Electric Modifications**

ALK - Alarm Kit<sup>6</sup>  
 ALL - Alarm Kit w/ Tamper Switch and Latch Monitor<sup>6</sup>  
 ALM - Alarm Kit w/ Latch Monitor<sup>6</sup>  
 ALT - Alarm Kit w/ Tamper Switch<sup>6</sup>  
 DE - Delayed Egress  
 LM - Latchbolt Monitor  
 RX - Request to Exit  
 RX2 - Dual Request to Exit  
 RXLM - Request to Exit w/ Latchbolt Monitor  
 MLR - Motor Driven Electric Latch Retraction  
 MLRX - Motor Driven Electric Latch Retraction w/ Request to Exit  
 MLRLM - Motor Driven Latch Retraction with Latchbolt Monitoring  
 MLRXLM - Motor Driven Electric Latch Retraction with Request to Exit and Latchbolt Monitoring

4600 SERIES TRIM

46

**Product Group**

46 - 4600 Series, Grade 1

CE

**Trim/Function**

BE - Blank Escutcheon  
 Function 14, always operable  
 CE - Cylinder Escutcheon<sup>2</sup>  
 Function 08, key locks/unlocks lever  
 DT - Dummy Trim  
 Function 02, pull when dogged down  
 NL - Night Latch<sup>3</sup>(1-3/4" thick doors only)  
 Function 03, key retracts latchbolt

ARC

**Lever Style**

ARC - Archer  
 AUG - August  
 WLM - William  
 WTN - Withnell

US3

**Finish**

US3  
 US4  
 US10B  
 US26  
 US26D  
 BLK<sup>1</sup>

1-3/4"

**Door Thickness**

1-5/8"  
 1-3/4"  
 2"  
 2-1/2"  
 3"

TW

**Options**

TW - Tactile Warning  
 A - Antimicrobial Coating (US26D only)

**Notes:**

1. Extended lead time on flat black finish.
2. Mortise cylinder 3902 with 3976 L cam is required for use with cylinder escutcheon trim is sold separately.
3. Rim cylinder 3901 with long tailpiece is required for use with night latch trim and is sold separately.
4. For more cylinder information, please refer to Cylinder, Core & Keying in the Locks section of the catalog.
5. If using shim kit, specify total door thickness including shims.
6. Not available on 4600 CVR or CLB.



# Exit Devices

## 4700 SERIES EXIT DEVICE

|                            |  |                                       |  |                            |                                  |
|----------------------------|--|---------------------------------------|--|----------------------------|----------------------------------|
| <b>4701</b>                | <b>RIM</b>                                     | <b>FR</b>                             | <b>36"</b>   | <b>US3</b>                 | <b>2"</b>                        |
| <b>Product Group</b>       | <b>Type</b>                                    | <b>Rating</b>                         | <b>Size</b>  | <b>Finish</b>              | <b>Door Thickness</b>            |
| 4700 Series, Standard Duty | RIM - Rim Device<br>SVR - Surface Vertical Rod | FR - Fire Rated<br>0 - Non-Fire Rated | 36"<br>48"<br>36" x 84"<br>36" x 96"<br>48" x 84"<br>48" x 96" | US3<br>US32D<br>ALM<br>DBZ | 1-5/8"<br>1-3/4"<br>2"<br>2-1/4" |

## 4700 SERIES TRIM

|                                 |  |   |   |                            |                                  |   |
|---------------------------------|--|---|---|----------------------------|----------------------------------|---|
| <b>47</b>                       | <b>CE</b>  | <b>RH</b>   | <b>ARC</b>  | <b>US3</b>                 | <b>2"</b>                        | <b>TW</b>   |
| <b>Product Group</b>            | <b>Trim/Function</b>   | <b>Handing</b>                                    | <b>Lever Style</b>  | <b>Finish</b>              | <b>Door Thickness</b>            | <b>Options</b>                                    |
| 47 - 4700 Series, Standard Duty | CE - Cylinder Escutcheon<br>Function 08, key locks/unlocks<br>BE - Blank Escutcheon<br>Function 14, always operable<br>NL - Night Latch<br>Function 03, key retracts latchbolt<br>DT - Dummy Trim<br>Function 02, pull when dogged down<br>KD- Key in Lever - Dummy Trim<br>Function 02, entrance by trim when actuating bar is locked down<br>KE- Key in Lever - Entrance<br>Function 08, entrance by trim (key locks or unlocks trim)<br>KN- Key in Lever - Night Latch<br>Function 03, entrance by trim when latch bolt is released by key; removable when locked<br>KP- Key in Lever - Passage<br>Function 14, entrance by trim when latch bolt is released by lever; always active; no cylinder<br>PD- Pull Plate Dummy Trim<br>Function 02, pull when dogged down<br>PN- Pull Plate Night Latch<br>Function 03, key retracts latchbolt<br>RD- Raised Lip Pull - Dummy Trim<br>Function 02, pull when dogged down<br>RN- Raised Lip Pull - Night Latch<br>Function 03, key retracts latches<br>BT- Thumbpiece Pull Plate, Passage<br>Function 15, entrance by trim when latch is released by thumbpiece. Thumbpiece is always active, no cylinder<br>PT- Thumbpiece Pull Plate, Entrance<br>Function 05, entrance by thumbpiece. Key locks or unlocks thumb piece | RH - Right Handed / LHR<br>LH - Left Handed / RHR | ARC - Archer<br>AUG - August<br>WTN - Withnell<br>APL - Apollo knob | US3<br>US32D<br>ALM<br>DBZ | 1-5/8"<br>1-3/4"<br>2"<br>2-1/4" | TW - Tactile Warning<br>A - Antimicrobial Coating |

**Notes:**

1. Handing is required for the 4700 Series trim.
2. Cylinders sold separately.
3. For more cylinder information, please refer to Cylinder, Core & Keying in the Locks section of the catalog.
4. Maximum door thickness compatibility for key-in-lever (Entrance, Night Latch, and Passage) trim is 1-3/4" (44 mm)







| Description   | Length    | Finish | 2022 List | Stock No. | List Fire Rated | Stock No. | Case Qty. |
|---|-----------|--------|-----------|-----------|-----------------|-----------|-----------|
| <b>4501 RIM</b>   | 36"       | US3    | 1,263.58  | 158092    | 1,443.09        | 158111    | 3         |
| Grade 1   | Exit Only | US4    | 1,263.58  | 158094    | 1,443.09        | 158107    |           |
| Non-Handed  |           | US10B  | 1,263.58  | 158088    | 1,443.09        | 158103    |           |
|   |           | US26   | 1,263.58  | 158089    | 1,443.09        | 158109    |           |
| Cylinder Dogging (specify CD), add \$53.06 to list price. 3902 mortise cylinder with standard cam must be ordered separately. Cylinder length of 1-1/8" (29mm) - 1-3/8" (35mm) is required.                     |           | US26D  | 1,219.94  | 158090    | 1,443.09        | 158104    |           |
|   |           | US32D  | 1,263.58  | 158093    | 1,443.09        | 158105    |           |
|   |           | BLK    | 1,263.58  | 198638    | 1,443.09        | 198639    |           |
|   | 48"       | US3    | 1,308.70  | 156140    | 1,498.87        | 156145    | 3         |
| Exit Only   |           | US4    | 1,308.70  | 156141    | 1,498.87        | 156146    |           |
|   |           | US10B  | 1,308.70  | 156139    | 1,498.87        | 156143    |           |
| Severe Windstorm Rated device, add \$66.37 to list price and specify WR.  |           | US26   | 1,308.70  | 158180    | 1,498.87        | 156144    |           |
|   |           | US26D  | 1,277.07  | 156135    | 1,451.77        | 154983    |           |
| Refer to page 4 & 5 for electric modification pricing.  |           | US32D  | 1,308.70  | 156136    | 1,498.87        | 156137    |           |
|   |           | BLK    | 1,498.87  | 198608    | 1,498.87        | 198640    |           |
| Anti-microbial coating - add \$57.43 to list price.   |           |        |           |           |                 |           |           |
| Less dogging (specify LD-NON FIRE RATED ONLY), add \$48.60 list price.  |           |        |           |           |                 |           |           |
| <b>4501 SVR LBR</b>   | 36" x 84" | US3    | 1,861.76  | 129450    | 2,017.75        | 126690    | 3         |
| Grade 1   | Exit Only | US4    | 1,861.76  | 131538    | 2,017.75        | 135130    |           |
| Non-Handed  |           | US10B  | 1,861.76  | 127645    | 2,017.75        | 126438    |           |
|   |           | US26   | 1,861.76  | -         | 2,017.75        | 146277    |           |
| Cylinder Dogging (specify CD), add \$53.06 to list price. 3902 mortise cylinder with standard cam must be ordered separately. Cylinder length of 1-1/8" (29mm) - 1-3/8" (35mm) is required.                     |           | US26D  | 1,719.31  | 124387    | 1,886.70        | 124389    |           |
|   |           | US32D  | 1,861.76  | 174486    | 2,017.75        | 170442    |           |
|   |           | BLK    |           |           | 2,017.75        | 37931     |           |
|   | 36" x 96" | US3    | 1,931.01  | -         | 2,108.49        | -         | 3         |
| Exit Only   |           | US4    | 1,931.01  | 152521    | 2,108.49        | 173396    |           |
|   |           | US10B  | 1,931.01  | 143515    | 2,108.49        | 126441    |           |
| Fire rated LBR devices must be ordered in pairs of less bottom rod vertical rod devices and with a spring loaded fire latch (Part # 2-649-0166 - add \$61.99 to list price) to ensure the device's fire rating. |           | US26   | 1,931.01  | -         | 2,108.49        | 032342    |           |
|   |           | US26D  | 1,830.18  | 127422    | 1,995.59        | 133810    |           |
|   |           | US32D  | 1,931.01  | 133952    | 2,108.49        | 124391    |           |
| Refer to page 4 for electric modification.  | 48" x 84" | US3    | 1,995.59  | -         | 2,164.95        | 146813    | 3         |
| Exit Only   |           | US4    | 1,995.59  | 131540    | 2,164.95        | 147614    |           |
| Refer to page 29 for extension rod kits for doors over 8 feet in height. Note that these are not fire rated for the LBR.  |           | US10B  | 1,995.59  | 161824    | 2,164.95        | 127646    |           |
|   |           | US26   | 1,995.59  | -         | 2,164.95        | -         |           |
|   |           | US26D  | 1,886.69  | 129506    | 2,164.95        | 127252    |           |
|   |           | US32D  | 1,995.59  | 138585    | 2,164.95        | 156237    |           |
| Anti-microbial coating - add \$57.43 to list price.   |           |        |           |           |                 |           |           |
| Less dogging (specify LD-NON FIRE RATED ONLY), add \$48.60 list price.  | 48" x 96" | US3    | 2,031.17  | -         | 2,197.81        | -         | 3         |
| Exit Only   |           | US4    | 2,031.17  | -         | 2,197.81        | -         |           |
|   |           | US10B  | 2,031.17  | 173468    | 2,197.81        | 137024    |           |
|   |           | US26   | 2,031.17  | -         | 2,197.81        | -         |           |
|   |           | US26D  | 1,995.59  | 147312    | 2,108.49        | 129948    |           |
|   |           | US32D  | 2,031.17  | 149138    | 2,197.81        | 138708    |           |



# Exit Devices - 4500



| Description   | Length  | Finish    | 2022 List | Stock No. | List Fire Rated | Stock No. | Case Qty. |   |
|---|---|-----------|-----------|-----------|-----------------|-----------|-----------|---|
| <b>4501 SVR</b><br>Grade 1<br>Non-Handed<br><br>Cylinder Dogging (specify CD), add \$53.06 to list price. 3902 mortise cylinder with standard cam must be ordered separately. Cylinder length of 1-1/8" (29mm) - 1-3/8" (35mm) is required. | 36" x 84"   | US3       | 1,861.76  | 157344    | 2,017.75        | 157393    | 3         |   |
|   | Exit Only   | US4       | 1,861.76  | 157346    | 2,017.75        | 157395    |           |   |
|   |   | US10B     | 1,861.76  | 157341    | 2,017.75        | 157422    |           |   |
|   | Severe Windstorm Rated device, add \$66.38 to list price and specify WR.  | Exit Only | US26      | 1,861.76  | 157342          | 2,017.75  | 158058    |   |
|   |   |           | US26D     | 1,791.31  | 157343          | 1,886.70  | 157392    |   |
|   |   |           | US32D     | 1,861.76  | 157345          | 2,017.75  | 157394    |   |
|   |   |           | BLK       | 1,861.76  | 198642          | 2,017.75  | 198663    |   |
|   | Refer to page 4 for electric modification.<br><br>Refer to page 29 for extension rod kits for doors over 8 feet in height.<br><br>Anti-microbial coating - add \$57.43 to list price. | 36" x 96" | US3       | 1,931.01  | 157400          | 2,108.49  | 157426    | 3 |
|   |   | Exit Only | US4       | 1,931.01  | 157401          | 2,108.49  | 158068    |   |
|   |   |           | US10B     | 1,931.01  | 157399          | 2,108.49  | 157424    |   |
| Less dogging (specify LD-NON FIRE RATED ONLY), add \$48.60 list price.  |   | Exit Only | US26      | 1,931.01  | 157568          | 2,108.49  | 157425    |   |
|   |   |           | US26D     | 1,830.18  | 157390          | 1,995.59  | 157396    |   |
|   |   |           | US32D     | 1,931.01  | 157391          | 2,108.49  | 157397    |   |
|   |   |           | US3       |           |                 | 2,212.65  | -         | 3 |
| 48" x 84"   |   | Exit Only | US4       |           |                 | 2,212.65  | 157421    |   |
|   |   |           | US10B     |           |                 | 2,212.65  | 157887    |   |
|   |   |           | US26      |           |                 | 2,212.65  | -         |   |
|   | US26D   |           |           |           | 2,060.73        | 157418    |           |   |
|   | US32D   |           |           |           | 2,212.65        | 157420    |           |   |
|   | US3   |           | 1,995.59  | 157895    | 2,164.95        | 156229    | 3         |   |
| 48" x 96"   | Exit Only   | US4       | 1,995.59  | 156152    | 2,164.95        | 158074    |           |   |
|   |   | US10B     | 1,995.59  | 156149    | 2,164.95        | 154982    |           |   |
|   |   | US26      | 1,995.59  | 156150    | 2,164.95        | 156227    |           |   |
|   |   | US26D     | 1,886.69  | 156147    | 2,164.95        | 156148    |           |   |
|   |   | US32D     | 1,995.59  | 156151    | 2,164.95        | 156230    |           |   |
|   |   | US3       | 2,031.17  | 157901    | 2,197.81        | 158076    | 3         |   |
| 48" x 120"  | Exit Only   | US4       | 2,031.17  | 157906    | 2,197.81        | 156235    |           |   |
|   |   | US10B     | 2,031.17  | 157900    | 2,197.81        | 156231    |           |   |
|   |   | US26      | 2,031.17  | 156153    | 2,197.81        | 156232    |           |   |
|   |   | US26D     | 1,995.59  | 156154    | 2,108.49        | 156233    |           |   |
|   |   | US32D     | 2,031.17  | 157905    | 2,197.81        | 156234    |           |   |
|   |   | US3       |           |           | 2,306.10        | -         | 3         |   |
| 48" x 120"  | Exit Only   | US4       |           |           | 2,306.10        | -         |           |   |
|   |   | US10B     |           |           | 2,306.10        | 156156    |           |   |
|   |   | US26      |           |           | 2,306.10        | -         |           |   |
|   |   | US26D     |           |           | 2,146.78        | 158069    |           |   |
|   |   | US32D     |           |           | 2,306.10        | 156225    |           |   |

1. U/M is each unless otherwise noted.



| Description   | Length    | Finish | 2022 List | Stock No. | List Fire Rated | Stock No. | Case Qty. |
|---|-----------|--------|-----------|-----------|-----------------|-----------|-----------|
| <b>4501 CVR</b><br>Grade 1<br>Non-Handed<br><br>Cylinder Dogging (specify CD), add \$53.06 to list price. 3902 mortise cylinder with standard cam must be ordered separately. Cylinder length of 1-1/8" (29mm) - 1-3/8" (35mm) is required. | 36" x 84" | US3    | 2,340.39  | 033019    | 2,622.64        | -         | 3         |
|   | Exit Only | US4    | 2,340.39  | -         | 2,622.64        | -         |           |
|   |           | US10B  | 2,340.39  | 050046    | 2,622.64        | 050040    |           |
|   |           | US26   | 2,340.39  | -         | 2,622.64        | 044155    |           |
|   |           | US26D  | 2,340.39  | 050065    | 2,622.64        | 050059    |           |
|   |           | US32D  | 2,340.39  | 50051     | 2,622.64        | 149313    |           |
| Refer to page 4 for electric modification pricing.  | 36" x 96" | US3    | 2,390.07  | -         | 2,672.38        | -         | 3         |
|   | Exit Only | US4    | 2,390.07  | -         | 2,672.38        | -         |           |
|   |           | US10B  | 2,390.07  | 050030    | 2,672.38        | 050036    |           |
|   |           | US26   | 2,390.07  | -         | 2,672.38        | -         |           |
|   |           | US26D  | 2,390.07  | 150761    | 2,672.38        | 050065    |           |
|   |           | US32D  | 2,390.07  | 150762    | 2,672.38        | 050066    |           |
| Refer to page 29 for extension rod kits for doors over 8 feet in height.  | 48" x 84" | US3    | 2,435.81  | -         | 2,718.06        | -         | 3         |
|   | Exit Only | US4    | 2,435.81  | -         | 2,718.06        | -         |           |
|   |           | US10B  | 2,435.81  | 048224    | 2,718.06        | -         |           |
|   |           | US26   | 2,435.81  | 050063    | 2,718.06        | -         |           |
|   |           | US26D  | 2,435.81  | 050043    | 2,718.06        | 036355    |           |
|   |           | US32D  | 2,435.81  | -         | 2,718.06        | 050037    |           |
| Anti-microbial coating - add \$57.43 to list price.   | 48" x 96" | US3    | 2,485.49  | 168182    | 2,767.80        | -         | 3         |
|   | Exit Only | US4    | 2,485.49  | 168184    | 2,767.80        | -         |           |
|   |           | US10B  | 2,485.49  | 168172    | 2,767.80        | -         |           |
|   |           | US26   | 2,485.49  | 168181    | 2,767.80        | -         |           |
|   |           | US26D  | 2,485.49  | 168167    | 2,767.80        | 036465    |           |
|   |           | US32D  | 2,485.49  | 168183    | 2,767.80        | 047054    |           |

1.U/M is each unless otherwise noted.



# Exit Devices - 4500

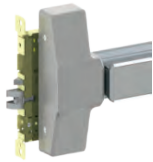


| Description   | Length    | Finish | 2022 List | Stock No. | List Fire Rated | Stock No. | Case Qty. |
|---|-----------|--------|-----------|-----------|-----------------|-----------|-----------|
| <b>4501 CLB</b><br>Grade 1<br>Non-Handed<br><br>Cylinder Dogging (specify CD), add \$53.06 to list price. 3902 mortise cylinder with standard cam must be ordered separately. Cylinder length of 1-1/8" (29mm) - 1-3/8" (35mm) is required.<br><br>Fire rated LBR devices must be ordered in pairs of less bottom rod vertical rod devices and with a spring loaded fire bolt (Part # 2-649-0166, add \$67.96 to list price) to ensure the device's fire rating.<br><br>Refer to page 4 for electric modification pricing.<br><br>Refer to page 25 for extension rod kits for doors over 8 feet in height | 36" x 84" | US3    | 2,340.39  | -         | 2,622.64        | -         | 3         |
|   | Exit Only | US4    | 2,340.39  | -         | 2,622.64        | -         |           |
|   |           | US10B  | 2,340.39  | -         | 2,622.64        | -         |           |
|   |           | US26   | 2,340.39  | -         | 2,622.64        | -         |           |
|   |           | US26D  | 2,340.39  | 047320    | 2,622.64        | 049802    |           |
|   |           | US32D  | 2,340.39  | 049969    | 2,622.64        | 045528    |           |
|   | 36" x 96" | US3    | 2,390.07  | -         | 2,672.38        | -         | 3         |
|   | Exit Only | US4    | 2,390.07  | -         | 2,672.38        | -         |           |
|   |           | US10B  | 2,390.07  | -         | 2,672.38        | 034331    |           |
|   |           | US26   | 2,390.07  | -         | 2,672.38        | -         |           |
|   |           | US26D  | 2,390.07  | 037393    | 2,672.38        | 045040    |           |
|   |           | US32D  | 2,390.07  | 046227    | 2,672.38        | 036300    |           |
|   | 48" x 84" | US3    | 2,435.81  | -         | 2,718.06        | -         | 3         |
|   | Exit Only | US4    | 2,435.81  | -         | 2,718.06        | -         |           |
|   |           | US10B  | 2,435.81  | -         | 2,718.06        | -         |           |
|   |           | US26   | 2,435.81  | -         | 2,718.06        | -         |           |
|   |           | US26D  | 2,435.81  | -         | 2,718.06        | 044976    |           |
|   |           | US32D  | 2,435.81  | -         | 2,718.06        | 161879    |           |
|   | 48" x 96" | US3    | 2,485.49  | -         | 2,767.80        | -         | 3         |
|   | Exit Only | US4    | 2,485.49  | -         | 2,767.80        | -         |           |
|   |           | US10B  | 2,485.49  | -         | 2,767.80        | -         |           |
|   |           | US26   | 2,485.49  | -         | 2,767.80        | -         |           |
|   |           | US26D  | 2,485.49  | -         | 2,767.80        | -         |           |
|   |           | US32D  | 2,485.49  | 049967    | 2,767.80        | -         |           |



### Mortise Lock Exit Devices

|  |           |       |          |        |          |        |   |
|--|-----------|-------|----------|--------|----------|--------|---|
| <b>4501 M</b><br>(Pair with MB, MC, MD trim)<br>Grade 1<br>Non-Handed<br><br>Cylinder Dogging (specify CD), add \$53.06 to list price. 3902 mortise cylinder with standard cam must be ordered separately. Cylinder length of 1-1/8" (29mm) - 1-3/8" (35mm) is required.<br><br>Refer to page 4 for electric modification pricing. Anti-microbial coating - add \$57.43 to list price.<br><br>Less dogging (specify LD-NON FIRE RATED ONLY), add \$48.60 list price. | 36"       | US3   | 2,348.45 | 084209 | 2,581.64 | -      | 3 |
|  | Exit Only | US4   | 2,348.45 | 084199 | 2,581.64 | 084081 |   |
|  |           | US10B | 2,348.45 | 084276 | 2,581.64 | 084123 |   |
|  |           | US26  | 2,348.45 | 084268 | 2,581.64 | 084120 |   |
|  |           | US26D | 2,267.07 | 084249 | 2,494.29 | 084116 |   |
|  |           | US32D | 2,348.45 | 084203 | 2,581.64 | 084104 |   |
|  | 48"       | US3   | 2,379.29 | 045758 | 2,612.61 | 084074 | 3 |
|  | Exit Only | US4   | 2,379.29 | -      | 2,612.61 | -      |   |
|  |           | US10B | 2,379.29 | -      | 2,612.61 | -      |   |
|  |           | US26  | 2,379.29 | -      | 2,612.61 | 084078 |   |
|  |           | US26D | 2,298.03 | 084190 | 2,522.48 | 162835 |   |
|  |           | US32D | 2,379.29 | 084146 | 2,612.61 | 162837 |   |



| Description                          | Length    | Finish | 2022 List | Stock No. | List Fire Rated | Stock No. | Case Qty. |
|--------------------------------------|-----------|--------|-----------|-----------|-----------------|-----------|-----------|
| <b>4501 N</b><br>(Pair with MN trim) | Exit Only | US3    | 2,348.45  | -         | 2,581.64        | - 3 -     |           |
|                                      |           | US4    | 2,348.45  | -         | 2,581.64        | -         |           |
|                                      |           | US10   | 2,348.45  | -         | 2,581.64        | -         |           |
|                                      |           | US26   | 2,348.45  | -         | 2,581.64        | -         |           |
|                                      |           | US26D  | 2,267.07  | 084005    | 2,522.48        | 083971    |           |
|                                      |           | US32D  | 2,348.45  | 083998    | 2,581.64        | 083930    |           |
| 48"<br>Exit Only                     |           | US3    | 2,379.29  | -         | 2,612.61        | - 3       |           |
|                                      |           | US4    | 2,379.29  | -         | 2,612.61        | -         |           |
|                                      |           | US10B  | 2,379.29  | -         | 2,612.61        | -         |           |
|                                      |           | US26   | 2,379.29  | -         | 2,612.61        | -         |           |
|                                      |           | US26D  | 2,298.03  | 083982    | 2,522.48        | 083904    |           |
|                                      |           | US32D  | 2,379.29  | 083979    | 2,612.61        | 083896    |           |



|  |     |       |        |        |  |   |
|--|-----|-------|--------|--------|--|---|
| <b>4501 D</b><br>Dummy Push Pad<br>Non-handed<br>For use with 4500 and 4600<br>Series Exit Devices | 36" | US3   | 796.46 | 149393 |  | 3 |
|  |     | US10B | 796.46 | 149392 |  |   |
|  |     | US26D | 699.01 | 149391 |  |   |
|  |     | US32D | 796.46 | 149390 |  |   |
| Anti-microbial coating - add \$57.43<br>to list price.   | 48" | US3   | 827.43 | -      |  | 3 |
|  |     | US10B | 827.43 | 149396 |  |   |
|  |     | US26D | 729.98 | 149395 |  |   |
|  |     | US32D | 827.43 | 149394 |  |   |



| Description   | Function                 | Finish | 2022 List | Stock No. LHR | 2022 List | Stock No. RHR | Case Qty. |
|---|--------------------------|--------|-----------|---------------|-----------|---------------|-----------|
| <b>45BE</b><br>Blank Escutcheon<br>Tactile Warning - add \$52.21 to list price. Anti-microbial coating - add \$57.43 to list price. |                          |        |           |               |           |               |           |
| <b>Archer Lever</b>   | 14<br>Always<br>Operable | US3    | 645.27    | 122812        |           |               | 6         |
|   |                          | US4    | 645.27    | 122814        |           |               |           |
|   |                          | US10B  | 645.27    | 122806        |           |               |           |
|   |                          | US26   | 645.27    | 122808        |           |               |           |
|   |                          | US26D  | 621.08    | 122810        |           |               |           |
|   |                          | BLK    | 645.27    | 43564         |           |               |           |
| <b>August Lever</b>   |                          | US3    | 645.27    | 122796        |           |               | 6         |
|   |                          | US4    | 645.27    | 122797        |           |               |           |
|   |                          | US10B  | 645.27    | 122793        |           |               |           |
|   |                          | US26   | 645.27    | 122794        |           |               |           |
|   |                          | US26D  | 621.08    | 122795        |           |               |           |
|   |                          | BLK    | 645.27    | 49573         |           |               |           |
| <b>Charles Lever</b>  |                          | US3    | 645.27    | -             |           |               | 6         |
|   |                          | US4    | 645.27    | -             |           |               |           |
|   |                          | US10B  | 645.27    | 178079        |           |               |           |
|   |                          | US26   | 645.27    | -             |           |               |           |
| <b>Johnston Lever</b><br>(must specify handling)  |                          | US26D  | 621.08    | 176196        |           |               |           |
|   |                          | US3    | 645.27    | -             | 645.27    | -             | 6         |
|   |                          | US4    | 645.27    | 178146        | 645.27    | -             |           |
|   |                          | US10B  | 645.27    | 177946        | 645.27    | 177951        |           |
|   |                          | US26   | 645.27    | 178130        | 645.27    | 178133        |           |
|   |                          | US26D  | 621.08    | 177384        | 621.08    | 177387        |           |

1.U/M is each unless otherwise noted.



# Exit Devices - 4500

| Description  | Function  | Finish | 2022 List | Stock No.<br>LHR | 2022 List | Stock No.<br>RHR | Case Qty. |
|--|-----------|--------|-----------|------------------|-----------|------------------|-----------|
| <b>Joshua Lever</b>  | 14        | US3    | 645.27    | -                |           |                  | 6         |
|  | Always    | US4    | 645.27    | -                |           |                  |           |
|  | Operable  | US10B  | 645.27    | 178087           |           |                  |           |
|  |           | US26   | 645.27    | -                |           |                  |           |
|  |           | US26D  | 621.08    | 178084           |           |                  |           |
| <b>Louis Lever</b>   |           | US3    | 645.27    | 177349           |           |                  | 6         |
|  |           | US4    | 645.27    | 177356           |           |                  |           |
|  |           | US10B  | 645.27    | 177296           |           |                  |           |
|  |           | US26   | 645.27    | 177301           |           |                  |           |
|  |           | US26D  | 621.08    | 177305           |           |                  |           |
| <b>Warren Lever</b><br>(must specify handling)                   |           | US3    | 645.27    | -                | 597.47    | - 6 -            |           |
|  |           | US4    | 645.27    | -                | 597.47    |                  |           |
|  |           | US10B  | 645.27    | 178053           | 597.47    | 178057           |           |
|  |           | US26   | 645.27    | -                | 597.47    | -                |           |
|  |           | US26D  | 621.08    | 178031           | 575.07    | 178048           |           |
| <b>William Lever</b>   |           | US3    | 645.27    | -                |           |                  | 6         |
|  |           | US4    | 645.27    | -                |           |                  |           |
|  |           | US10B  | 645.27    | 165842           |           |                  |           |
|  |           | US26   | 645.27    | 165843           |           |                  |           |
|  |           | US26D  | 621.08    | 165844           |           |                  |           |
| <b>Withnell Lever</b>  |           | US3    | 645.27    | 122813           |           |                  | 6         |
|  |           | US4    | 645.27    | 122815           |           |                  |           |
|  |           | US10B  | 645.27    | 122807           |           |                  |           |
|  |           | US26   | 645.27    | 122809           |           |                  |           |
|  |           | US26D  | 621.08    | 122811           |           |                  |           |
|  |           | BLK    | 645.27    | 198994           |           |                  |           |
| <b>45MB</b>  |           |        |           |                  |           |                  |           |
| Blank Escutcheon for use with 4501M Mortise Lock Exit Device     |           |        |           |                  |           |                  |           |
| Mortise trim does not match centerline of other 4500 Series trim |           |        |           |                  |           |                  |           |
| Tactile Warning - add \$52.21 to list price.                     |           |        |           |                  |           |                  |           |
| Anti-microbial coating - add \$57.43 to list price.              |           |        |           |                  |           |                  |           |
| <b>Archer Lever</b>  | 14 Always | US3    | 645.27    | -                |           |                  | 6         |
|  | Operable  | US4    | 645.27    | -                |           |                  |           |
|  |           | US10B  | 645.27    | 163696           |           |                  |           |
|  |           | US26   | 645.27    | 163699           |           |                  |           |
|  |           | US26D  | 621.08    | 163559           |           |                  |           |
| <b>August Lever</b>  |           | US3    | 645.27    | -                |           |                  | 6         |
|  |           | US4    | 645.27    | -                |           |                  |           |
|  |           | US10B  | 645.27    | 163697           |           |                  |           |
|  |           | US26   | 645.27    | 163700           |           |                  |           |
|  |           | US26D  | 621.08    | 163560           |           |                  |           |



| Description           | Function | Finish | 2022 List | Stock No. | Case Qty. |
|-----------------------|----------|--------|-----------|-----------|-----------|
| <b>William Lever</b>  |          | US3    | 645.27    | -         | 6         |
|                       |          | US4    | 645.27    | -         |           |
|                       |          | US10B  | 645.27    | -         |           |
|                       |          | US26   | 645.27    | -         |           |
|                       |          | US26D  | 621.08    | 163624    |           |
| <b>Withnell Lever</b> |          | US3    | 645.27    | -         | 6         |
|                       |          | US4    | 645.27    | 163599    |           |
|                       |          | US10B  | 645.27    | 163558    |           |
|                       |          | US26   | 645.27    | 163702    |           |
|                       |          | US26D  | 621.08    | 163561    |           |



| Description   | Function                            | Finish | 2022 List | Stock No. LHR | 2022 List | Stock No. RHR | Case Qty. |
|---|-------------------------------------|--------|-----------|---------------|-----------|---------------|-----------|
| <b>45CE</b><br>Cylinder Escutcheon<br>Requires a 3902 mortise cylinder (with standard cam) sold separately<br>Tactile Warning - add \$52.21 to list price.<br>Anti-microbial coating - add \$57.43 to list price.<br>Refer to page 4 for electric modification pricing. |                                     |        |           |               |           |               |           |
| <b>Archer Lever</b>   | 08<br>Key locks or<br>unlocks lever | US3    | 645.27    | 122824        |           |               | 6         |
|   |                                     | US4    | 645.27    | 122826        |           |               |           |
|   |                                     | US10B  | 645.27    | 122818        |           |               |           |
|   |                                     | US26   | 645.27    | 122820        |           |               |           |
|   |                                     | US26D  | 621.08    | 122822        |           |               |           |
|   |                                     | BLK    | 645.27    | 198993        |           |               |           |
| <b>August Lever</b>   |                                     | US3    | 645.27    | 122802        |           |               | 6         |
|   |                                     | US4    | 645.27    | 122803        |           |               |           |
|   |                                     | US10B  | 645.27    | 122799        |           |               |           |
|   |                                     | US26   | 645.27    | 122800        |           |               |           |
|   |                                     | US26D  | 621.08    | 122801        |           |               |           |
|   |                                     | BLK    | 645.27    | 198995        |           |               |           |
| <b>Charles Lever</b>  |                                     | US3    | 645.27    | -             |           |               | 6         |
|   |                                     | US4    | 645.27    | -             |           |               |           |
|   |                                     | US10B  | 645.27    | 178080        |           |               |           |
|   |                                     | US26   | 645.27    | -             |           |               |           |
|   |                                     | US26D  | 621.08    | 176193        |           |               |           |
| <b>Johnston Lever</b><br>(must specify handling)  |                                     | US3    | 645.27    | -             | 645.27    | -             | 6         |
|   |                                     | US4    | 645.27    | 178147        | 645.27    | -             |           |
|   |                                     | US10B  | 645.27    | 177948        | 645.27    | 177952        |           |
|   |                                     | US26   | 645.27    | 178131        | 645.27    | 178134        |           |
|   |                                     | US26D  | 621.08    | 177385        | 621.08    | 177386        |           |

1.U/M is each unless otherwise noted.



# Exit Devices - 4500

| Description  | Function                      | Finish | 2022 List | Stock No.<br>LHR | 2022 List | Stock No.<br>RHR | Case Qty. |
|--|-------------------------------|--------|-----------|------------------|-----------|------------------|-----------|
| <b>Joshua Lever</b>  | 08                            | US3    | 645.27    | -                |           |                  | 6         |
|  | Key locks or<br>unlocks lever | US4    | 645.27    | -                |           |                  |           |
|  |                               | US10B  | 645.27    | 178088           |           |                  |           |
|  |                               | US26   | 645.27    | -                |           |                  |           |
|  |                               | US26D  | 621.08    | 178085           |           |                  |           |
| <b>Louis Lever</b>   |                               | US3    | 645.27    | 177350           |           |                  | 6         |
|  |                               | US4    | 645.27    | 177357           |           |                  |           |
|  |                               | US10B  | 645.27    | 177298           |           |                  |           |
|  |                               | US26   | 645.27    | 177302           |           |                  |           |
|  |                               | US26D  | 621.08    | 177306           |           |                  |           |
| <b>Warren Lever</b><br>(must specify handling)   |                               | US3    | 645.27    | -                | 645.27    | -                | 6         |
|  |                               | US4    | 645.27    | -                | 645.27    | -                |           |
|  |                               | US10B  | 645.27    | 178054           | 645.27    | 178058           |           |
|  |                               | US26   | 645.27    | -                | 645.27    | -                |           |
|  |                               | US26D  | 621.08    | 178032           | 621.08    | 178049           |           |
| <b>William Lever</b>   |                               | US3    | 645.27    | 159126           |           |                  | 6         |
|  |                               | US4    | 645.27    | 159127           |           |                  |           |
|  |                               | US10B  | 645.27    | 159121           |           |                  |           |
|  |                               | US26   | 645.27    | 159129           |           |                  |           |
|  |                               | US26D  | 621.08    | 159109           |           |                  |           |
| <b>Withnell Lever</b>  |                               | US3    | 645.27    | 122825           |           |                  | 6         |
|  |                               | US4    | 645.27    | 122827           |           |                  |           |
|  |                               | US10B  | 645.27    | 122819           |           |                  |           |
|  |                               | US26   | 645.27    | 122821           |           |                  |           |
|  |                               | US26D  | 621.08    | 122823           |           |                  |           |
|  |                               | BLK    | 645.27    | 198609           |           |                  |           |
| <b>45MC</b>  |                               |        |           |                  |           |                  |           |
| Cylinder Escutcheon for use with 4501M Mortise Lock Exit Device<br>Mortise trim does not match centerline of other 4500 Series trim<br>Requires a 3902 mortise cylinder (1-5/8" with standard cam) sold separately. Tactile Warning - add \$52.2 to list price.<br>Anti-microbial coating - add \$57.43 to list price. |                               |        |           |                  |           |                  |           |
| <b>Archer Lever</b>  | 08                            | US3    | 645.27    | -                |           |                  | 6         |
|  | Key locks or<br>unlocks lever | US4    | 645.27    | 163708           |           |                  |           |
|  |                               | US10B  | 645.27    | 163562           |           |                  |           |
|  |                               | US26   | 645.27    | 163717           |           |                  |           |
|  |                               | US26D  | 621.08    | 163523           |           |                  |           |
| <b>August Lever</b>  |                               | US3    | 645.27    | -                |           |                  | 6         |
|  |                               | US4    | 645.27    | 163709           |           |                  |           |
|  |                               | US10B  | 645.27    | 163715           |           |                  |           |
|  |                               | US26   | 645.27    | 163718           |           |                  |           |
|  |                               | US26D  | 621.08    | 163564           |           |                  |           |





| Description           | Function | Finish | 2022 List | Stock No. | Case Qty. |
|-----------------------|----------|--------|-----------|-----------|-----------|
| <b>William Lever</b>  |          | US3    | 645.27    | -         | 6         |
|                       |          | US4    | 645.27    | 163625    |           |
|                       |          | US10B  | 645.27    | 163716    |           |
|                       |          | US26   | 645.27    | -         |           |
|                       |          | US26D  | 621.08    | 163626    |           |
| <b>Withnell Lever</b> |          | US3    | 645.27    | 163707    | 6         |
|                       |          | US4    | 645.27    | 163710    |           |
|                       |          | US10B  | 645.27    | 163563    |           |
|                       |          | US26   | 645.27    | 163720    |           |
|                       |          | US26D  | 621.08    | 163565    |           |



| Description  | Function    | Finish | 2022 List | Stock No. LHR | 2022 List | Stock No. RHR | Case Qty. |
|--|-------------|--------|-----------|---------------|-----------|---------------|-----------|
| <b>45DT</b><br>Dummy Trim<br>Tactile Warning - add \$52.21 to list price.<br>Anti-microbial coating - add \$57.43 to list price. |             |        |           |               |           |               |           |
| <b>Archer Lever</b>  | 02          | US3    | 645.27    | 14036         |           |               | 6         |
|  | Pull when   | US4    | 645.27    | 14023         |           |               |           |
|  | device is   | US10B  | 645.27    | 14038         |           |               |           |
|  | dogged down | US26   | 645.27    | 60033         |           |               |           |
|  |             | US26D  | 621.08    | 60018         |           |               |           |
| <b>August Lever</b>  |             | US3    | 645.27    | 107837        |           |               | 6         |
|  |             | US4    | 645.27    | 107838        |           |               |           |
|  |             | US10B  | 645.27    | 107834        |           |               |           |
|  |             | US26   | 645.27    | 107835        |           |               |           |
|  |             | US26D  | 621.08    | 107836        |           |               |           |
| <b>Charles Lever</b>   |             | US3    | 645.27    | -             |           |               | 6         |
|  |             | US4    | 645.27    | -             |           |               |           |
|  |             | US10B  | 645.27    | 178082        |           |               |           |
|  |             | US26   | 645.27    | -             |           |               |           |
|  |             | US26D  | 621.08    | 178078        |           |               |           |
| <b>Johnston Lever</b><br>(must specify handing)  |             | US3    | 645.27    | -             | 645.27    | -             | 6         |
|  |             | US4    | 645.27    | 178148        | 645.27    | -             |           |
|  |             | US10B  | 645.27    | 177949        | 645.27    | 177953        |           |
|  |             | US26   | 645.27    | 178132        | 645.27    | 178135        |           |
|  |             | US26D  | 621.08    | 177937        | 621.08    | 177940        |           |
| <b>Joshua Lever</b>  |             | US3    | 645.27    | -             |           |               | 6         |
|  |             | US4    | 645.27    | -             |           |               |           |
|  |             | US10B  | 645.27    | 178089        |           |               |           |
|  |             | US26   | 645.27    | -             |           |               |           |
|  |             | US26D  | 621.08    | 178086        |           |               |           |

1.U/M is each unless otherwise noted.



# Exit Devices - 4500

| Description                                    | Function                        | Finish | 2022 List | Stock No.<br>LHR | 2022 List | Stock No.<br>RHR | Case Qty. |
|--|---------------------------------|--------|-----------|------------------|-----------|------------------|-----------|
| <b>Louis Lever</b>                             | 02                              | US3    | 645.27    | 177354           |           |                  | 6         |
|  | Pull when device is dogged down | US4    | 645.27    | 177358           |           |                  |           |
|  |                                 | US10B  | 645.27    | 177299           |           |                  |           |
|  |                                 | US26   | 645.27    | 177303           |           |                  |           |
|  |                                 | US26D  | 621.08    | 177307           |           |                  |           |
| <b>Warren Lever</b><br>(must specify handling) |                                 | US3    | 645.27    | -                | 645.27    | - 6 -            |           |
|  |                                 | US4    | 645.27    | -                | 645.27    |                  |           |
|  |                                 | US10B  | 645.27    | 178055           | 645.27    | 178059           |           |
|  |                                 | US26   | 645.27    | -                | 645.27    | -                |           |
|  |                                 | US26D  | 621.08    | 178046           | 621.08    | 178050           |           |
| <b>William Lever</b>                           |                                 | US3    | 645.27    | -                |           |                  | 6         |
|  |                                 | US4    | 645.27    | -                |           |                  |           |
|  |                                 | US10B  | 645.27    | 165848           |           |                  |           |
|  |                                 | US26   | 645.27    | -                |           |                  |           |
|  |                                 | US26D  | 621.08    | 165850           |           |                  |           |
| <b>Withnell Lever</b>                          |                                 | US3    | 645.27    | 14035            |           |                  | 6         |
|  |                                 | US4    | 645.27    | 14020            |           |                  |           |
|  |                                 | US10B  | 645.27    | 14037            |           |                  |           |
|  |                                 | US26   | 645.27    | 60027            |           |                  |           |
|  |                                 | US26D  | 621.08    | 60017            |           |                  |           |

| Description  | Function                        | Finish | 2022 List | Stock No. | Case Qty. |
|--|---------------------------------|--------|-----------|-----------|-----------|
| <b>45MD</b>  |                                 |        |           |           |           |
| Dummy Trim for use with 4501M Mortise Lock Exit Device           |                                 |        |           |           |           |
| Mortise trim does not match centerline of other 4500 Series trim |                                 |        |           |           |           |
| Tactile Warning - add \$52.21 to list price.                     |                                 |        |           |           |           |
| Anti-microbial coating - add \$57.43 to list price.              |                                 |        |           |           |           |
| <b>Archer Lever</b>  | 02                              | US3    | 645.27    | -         | 6         |
|  | Pull when device is dogged down | US4    | 645.27    | -         |           |
|  |                                 | US10B  | 645.27    | -         |           |
|  |                                 | US26   | 645.27    | -         |           |
|  |                                 | US26D  | 621.08    | -         |           |
| <b>August Lever</b>  |                                 | US3    | 645.27    | -         | 6         |
|  |                                 | US4    | 645.27    | -         |           |
|  |                                 | US10B  | 645.27    | -         |           |
|  |                                 | US26   | 645.27    | -         |           |
|  |                                 | US26D  | 621.08    | -         |           |



| Description           | Function | Finish | 2022 List | Stock No. | Case Qty. |
|-----------------------|----------|--------|-----------|-----------|-----------|
| <b>William Lever</b>  |          | US3    | 645.27    | -         | 6         |
|                       |          | US4    | 645.27    | -         |           |
|                       |          | US10B  | 645.27    | -         |           |
|                       |          | US26   | 645.27    | -         |           |
|                       |          | US26D  | 621.08    | -         |           |
| <b>Withnell Lever</b> |          | US3    | 645.27    | -         | 6         |
|                       |          | US4    | 645.27    | -         |           |
|                       |          | US10B  | 645.27    | -         |           |
|                       |          | US26   | 645.27    | -         |           |
|                       |          | US26D  | 621.08    | 163727    |           |

| Description  | Function               | Finish | 2022 List | Stock No. LHR | 2022 List | Stock No. RHR | Case Qty. |
|--|------------------------|--------|-----------|---------------|-----------|---------------|-----------|
| <b>45NL</b>  |                        |        |           |               |           |               |           |
| Night Latch  |                        |        |           |               |           |               |           |
| Requires a 3901 rim cylinder (with long tailpiece) sold separately. Tactile Warning - add \$52.21 to list price. |                        |        |           |               |           |               |           |
| Anti-microbial coating - add \$57.43 to list price.  |                        |        |           |               |           |               |           |
| Maximum door thickness compatibility is 2-1/2" (38 mm)   |                        |        |           |               |           |               |           |
| <b>Archer Lever</b>  | 03                     | US3    | 645.27    | 14003         |           |               | 6         |
|  | Key retracts latchbolt | US4    | 645.27    | 13984         |           |               |           |
|  |                        | US10B  | 645.27    | 14011         |           |               |           |
|  |                        | US26   | 645.27    | 60009         |           |               |           |
|  |                        | US26D  | 621.08    | 60000         |           |               |           |
|  | BLK                    | 645.27 | 76467     |               |           |               |           |
| <b>August Lever</b>  |                        | US3    | 645.27    | 107844        |           |               | 6         |
|  |                        | US4    | 645.27    | 107845        |           |               |           |
|  |                        | US10B  | 645.27    | 107841        |           |               |           |
|  |                        | US26   | 645.27    | 107842        |           |               |           |
|  |                        | US26D  | 621.08    | 107843        |           |               |           |
|  | BLK                    | 645.27 | 61224     |               |           |               |           |
| <b>Charles Lever</b>   |                        | US3    | 645.27    | -             |           |               | 6         |
|  |                        | US4    | 645.27    | -             |           |               |           |
|  |                        | US10B  | 645.27    | 178083        |           |               |           |
|  |                        | US26   | 645.27    | -             |           |               |           |
|  |                        | US26D  | 621.08    | 178429        |           |               |           |
| <b>Johnston Lever</b><br>(must specify handling)   |                        | US3    | 645.27    | -             | 645.27    | -             | 6         |
|  |                        | US4    | 645.27    | 178149        | 645.27    | -             |           |
|  |                        | US10B  | 645.27    | 177950        | 645.27    | 177954        |           |
|  |                        | US26   | 645.27    | 177955        | 645.27    | 177956        |           |
|  |                        | US26D  | 621.08    | 177938        | 621.08    | 177941        |           |



1.U/M is each unless otherwise noted.



# Exit Devices - 4500

| Description                                    | Function                  | Finish | 2022 List | Stock No.<br>LHR | 2022 List | Stock No.<br>RHR | Case Qty. |
|--|---------------------------|--------|-----------|------------------|-----------|------------------|-----------|
| <b>Joshua Lever</b>                            | 03                        | US3    | 645.27    | -                |           |                  | 6         |
|  | Key retracts<br>latchbolt | US4    | 645.27    | -                |           |                  |           |
|  |                           | US10B  | 645.27    | 178092           |           |                  |           |
|  |                           | US26   | 645.27    | -                |           |                  |           |
|  |                           | US26D  | 621.08    | 178091           |           |                  |           |
| <b>Louis Lever</b>                             |                           | US3    | 645.27    | 177355           |           |                  | 6         |
|  |                           | US4    | 645.27    | 177359           |           |                  |           |
|  |                           | US10B  | 645.27    | 177300           |           |                  |           |
|  |                           | US26   | 645.27    | 177304           |           |                  |           |
|  |                           | US26D  | 621.08    | 177308           |           |                  |           |
| <b>Warren Lever</b><br>(must specify handling) |                           | US3    | 645.27    | -                | 645.27    | - 6 -            |           |
|  |                           | US4    | 645.27    | -                | 645.27    |                  |           |
|  |                           | US10B  | 645.27    | 178056           | 645.27    | 178060           |           |
|  |                           | US26   | 645.27    | -                | 645.27    | -                |           |
|  |                           | US26D  | 621.08    | 178047           | 621.08    | -                |           |
| <b>William Lever</b>                           |                           | US3    | 645.27    | -                |           |                  | 6         |
|  |                           | US4    | 645.27    | -                |           |                  |           |
|  |                           | US10B  | 645.27    | 159132           |           |                  |           |
|  |                           | US26   | 645.27    | 159133           |           |                  |           |
|  |                           | US26D  | 621.08    | 159112           |           |                  |           |
| <b>Withnell Lever</b>                          |                           | US3    | 645.27    | 13999            |           |                  | 6         |
|  |                           | US4    | 645.27    | 13980            |           |                  |           |
|  |                           | US10B  | 645.27    | 14007            |           |                  |           |
|  |                           | US26   | 645.27    | 60008            |           |                  |           |
|  |                           | US26D  | 621.08    | 60001            |           |                  |           |
|  |                           | BLK    | 645.27    | 198996           |           |                  |           |

| Description   | Function                  | Finish | 2022 List | Stock No. | Case Qty. |
|---|---------------------------|--------|-----------|-----------|-----------|
| <b>45MN</b>   |                           |        |           |           |           |
| Night Latch for use with 4501N Mortise Lock Exit Device   |                           |        |           |           |           |
| Mortise trim does not match centerline of other 4500 Series trim  |                           |        |           |           |           |
| Requires a 3902 mortise cylinder (1-5/8" with standard cam) sold separately. Tactile Warning - add \$52.21 to list price. |                           |        |           |           |           |
| Anti-microbial coating - add \$57.43 to list price.   |                           |        |           |           |           |
| <b>Archer Lever</b>   | 03                        | US3    | 645.27    | -         | 6         |
|   | Key retracts<br>latchbolt | US4    | 645.27    | -         |           |
|   |                           | US10B  | 645.27    | -         |           |
|   |                           | US26   | 645.27    | -         |           |
|   |                           | US26D  | 621.08    | 163538    |           |
| <b>August Lever</b>   |                           | US3    | 645.27    | -         | 6         |
|   |                           | US4    | 645.27    | -         |           |
|   |                           | US10B  | 645.27    | -         |           |
|   |                           | US26   | 645.27    | -         |           |
|   |                           | US26D  | 621.08    | 163725    |           |



| Description  | Function                         | Finish | 2022 List | Stock No. | Case Qty. |
|--|----------------------------------|--------|-----------|-----------|-----------|
| <b>William Lever</b>   |                                  | US3    | 645.27    | -         | 6         |
|  |                                  | US4    | 645.27    | -         |           |
|  |                                  | US10B  | 645.27    | -         |           |
|  |                                  | US26   | 645.27    | -         |           |
|  |                                  | US26D  | 621.08    | 169861    |           |
| <b>Withnell Lever</b>  |                                  | US3    | 645.27    | -         | 6         |
|  |                                  | US4    | 645.27    | -         |           |
|  |                                  | US10B  | 645.27    | -         |           |
|  |                                  | US26   | 645.27    | -         |           |
|  |                                  | US26D  | 621.08    | 163726    |           |
| <b>45PD</b><br>Pull Plate - Dummy Trim<br><br>For use with 4500 RIM, SVR, LBR, and CLB devices. Not for CVR. Tactile Warning - add \$52.21 to list price.<br>Anti-microbial coating - add \$57.43 to list price.   | 02                               | US3    | 175.45    | 109038    | 12        |
|  | Pull when device is dogged down  | US4    | 175.45    | 109039    |           |
|  |                                  | US10B  | 175.45    | 109041    |           |
|  |                                  | US26   | 175.45    | 109042    |           |
|  |                                  | US26D  | 175.45    | 109043    |           |
|  |                                  | US32D  | 175.45    | 109044    |           |
| <b>45PN</b><br>Pull Plate - Night Latch<br><br>For use with 4500 RIM, SVR, LBR, and CLB devices. Not for CVR. Requires a 3901 rim cylinder (sold separately)<br>Includes retaining cup for 161 door prep.<br>Tactile Warning - add \$52.21 to list price.<br>Anti-microbial coating - add \$57.43 to list price.   | 03                               | US3    | 196.31    | 109048    | 12        |
|  | Key retracts latchbolt           | US4    | 196.31    | 109049    |           |
|  |                                  | US10B  | 196.31    | 109051    |           |
|  |                                  | US26   | 196.31    | 109052    |           |
|  |                                  | US26D  | 196.31    | 109053    |           |
|  |                                  | US32D  | 196.31    | 109054    |           |
| <b>45PT</b><br>Pull Plate - Thumbpiece<br><br>For use with 4501 Rim device<br>Requires a 3902 mortise cylinder (sold separately)<br>Tactile Warning - add \$52.21 to list price.<br>Anti-microbial coating - add \$57.43 to list price.  | 05                               | US32D  | 426.18    | 146142    | 6         |
|  | Key locks or unlocks thumb piece |        |           |           |           |
| <b>313SE</b><br>Anti-Vandal Pull for 4500 Rim device<br>Material: 11 GA stainless steel Max<br>Projection: 1-7/8"<br>Size: 6-11/32 x 11"<br>Door Thickness: 1-3/4" - 2"<br>Fasteners: 1/4" FPHMS with finish washers<br>Rim cylinder 3901 sold separately<br>Retaining cup 2-649-0137 for 161 prep sold separately | Dummy                            | US32D  | 389.80    | 185346    |           |
|  | NL cyl. cutout LHR               | US32D  | 389.80    | 185350    |           |
|  | NL cyl. cutout RHR               | US32D  | 389.80    | 185352    |           |
|  |                                  |        |           |           |           |



1.U/M is each unless otherwise noted.

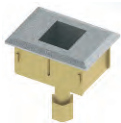


# Exit Devices - 4500



| Description   | Function           | Finish | 2022 List | Stock No. | Case Qty. |
|---|--------------------|--------|-----------|-----------|-----------|
| <b>313LE</b><br>Anti-Vandal Pull w/Latchguard for 4500 Rim Device<br>Material: 11 GA stainless steel<br>Max Projection: 1-7/8"<br>Size: 6-11/32 x 11"<br>Door Thickness: 1-3/4" - 2"<br>Fasteners: 1/4" FPHMS with finish washers<br>Rim cylinder 3901 sold separately<br>Retaining cup 2-649-0137 for 161 prep sold separately | Dummy              | US32D  | 389.80    | 185355    |           |
|   | NL cyl. cutout LHR | US32D  | 389.80    | 185354    |           |
|   | NL cyl. cutout RHR | US32D  | 389.80    | 185353    |           |
|   |                    |        |           |           |           |
| <b>4915</b><br>Threshold strike for use with 4500 or 4700 Series.<br>Optional - order separately.<br>Not for fire-rated doors.  |                    | US32D  | 31.64     | 67426     | 48        |
| <b>4920</b><br>Strike for use with 4500 Series or 4600 Series Rim Panic-Rated exit device. Included with 4500 RIM Panic-Rated device. Not for fire-rated doors.   |                    | US32D  | 88.77     | 16208     | 24        |
| <b>4920F</b><br>Fire rated strike for use with 4500 Series or 4600 Series fire rated Rim exit device. Included with fire rated device.  |                    | US32D  | 123.06    | 16207     | 24        |
| <b>4921</b><br>Double door strike for 4500 Vertical Rod and Rim exit device.<br>Optional - order separately.<br>Not for fire-rated doors.   |                    | US3    | 88.77     | 102255    | 24        |
|   |                    | US4    | 88.77     | 102256    |           |
|   |                    | US10B  | 88.77     | 102258    |           |
|   |                    | US26   | 88.77     | 102259    |           |
|   |                    | US32D  | 88.77     | 102271    |           |





| Description  | Length | Finish | 2022 List | Stock No. | Case Qty. |
|--|--------|--------|-----------|-----------|-----------|
| <b>4923</b><br>Top strike for use with 4500 Series Surface Vertical Rod Panic-Rated device. Included with panic-rated device.  |        | US32D  | 56.51     | 16206     | 24        |
| <b>4923F</b><br>Fire rated top strike for use with 4500 Series Surface Vertical Rod device. Included with fire rated device.   |        | US32D  | 69.26     | 16205     | 24        |
| <b>4924</b><br>Bottom strike for use with 4500 Series Vertical Rod devices. Included with panic rated device.  |        | US32D  | 69.26     | 16203     | 12        |
| <b>4924F</b><br>Fire rated bottom strike for use with 4500 Series Vertical Rod device. Included with fire rated device.  |        | US32D  | 79.93     | 16201     | 12        |
| <b>4926</b><br>Cylinder Dogging Conversion Kit for panic rated 4500 device<br><br>Requires a 3902 mortise cylinder (with standard cam) sold separately.<br>Cylinder length of 1-1/8" (29mm) - 1-3/8" (35mm) is required. | 36"    | US3    | 57.87     | 157135    | 48        |
|  |        | US4    | 57.87     | 157137    |           |
|  |        | US10B  | 57.87     | 157139    |           |
|  |        | US26   | 57.87     | 157140    |           |
|  |        | US26D  | 57.87     | 157141    |           |
|  | 48"    | US32D  | 57.87     | 157142    |           |
|  |        | US3    | 61.93     | 157143    | 36        |
|  |        | US4    | 61.93     | 157144    |           |
|  |        | US10B  | 61.93     | 157146    |           |
|  |        | US26   | 61.93     | 157147    |           |
| US26D  | 61.93  | 157148 |           |           |           |
| <b>4927</b><br>Bottom Latch Assembly for use with 4500 Series SVR Devices<br><br>Includes latch, cover and screws.<br>Included with device.  |        | US3    | 123.06    | 2526      | 24        |
|  |        | US4    | 123.06    | 2525      |           |
|  |        | US10B  | 123.06    | 2522      |           |
|  |        | US26   | 123.06    | 2520      |           |
|  |        | US26D  | 123.06    | 2518      |           |
|  | US32D  | 123.06 | 2511      |           |           |

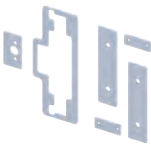
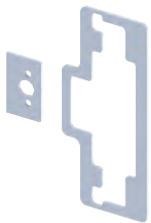
1.U/M is each unless otherwise noted.



## Exit Devices - 4500



| Description  | Finish | 2022 List | Stock No. | Case Qty. |
|--|--------|-----------|-----------|-----------|
| <b>4928</b><br>Top Latch Assembly for use with 4500 Series SVR and LBR Devices<br><br>Includes latch, cover and screws.<br>Included with device.           | US3    | 123.06    | 112972    | 24        |
|  | US4    | 123.06    | 112974    |           |
|  | US10B  | 123.06    | 112969    |           |
|  | US26   | 123.06    | 112970    |           |
|  | US26D  | 123.06    | 112971    |           |
|  | US32D  | 123.06    | 112973    |           |
| <b>4929</b><br>SVR/LBR Rod Replacement Kit (top or bottom)<br><br>Includes: One (1) each 45-1/4" (1149 mm) rod, rod connector, and appropriate fasteners.  | US3    | 57.87     | 2634      | 24        |
|  | US4    | 57.87     | 2633      |           |
|  | US10   | 57.87     | 2587      |           |
|  | US26   | 57.87     | 2573      |           |
|  | US26D  | 57.87     | 2571      |           |
|  | US32D  | 57.87     | 2564      |           |
| <b>4929C</b><br>CVR/CLB Rod Replacement Kit (top or bottom)<br><br>Includes: One (1) each 46-5/8" (1184 mm) rod, rod connector, and appropriate fasteners. | US26D  | 57.87     | 165570    | 24        |
|  |        |           |           |           |
| <b>4930R</b><br>Shim Kit for 4500 Rim Device<br><br>Packaged 2 ea. 1/8" shims  | US3    | 104.90    | 1440      | 24        |
|  | US4    | 104.90    | 1438      |           |
|  | US10B  | 104.90    | 1428      |           |
|  | US26   | 104.90    | 1426      |           |
|  | US26D  | 104.90    | 1423      |           |
|  | US32D  | 123.06    | 1421      |           |
| <b>4930S</b><br>Shim Kit for 4500 Surface Vertical Rod Device<br><br>Packaged 2 ea. 1/8" shims   | US3    | 104.90    | 1412      | 24        |
|  | US4    | 104.90    | 1411      |           |
|  | US10B  | 104.90    | 1404      |           |
|  | US26   | 104.90    | 1400      |           |
|  | US26D  | 104.90    | 1391      |           |
|  | US32D  | 123.06    | 1388      |           |
| <b>4932C</b><br>Replacement Head Cover for 4500 CVR Device   | US3    | 104.90    | 166447    | 20        |
|  | US4    | 104.90    | 166449    |           |
|  | US10B  | 104.90    | 166444    |           |
|  | US26   | 104.90    | 166445    |           |
|  | US26D  | 104.90    | 166446    |           |
|  | US32D  | 123.06    | 166448    |           |







| Description   | Length | Finish | 2022 List | Stock No. | Case Qty. |
|---|--------|--------|-----------|-----------|-----------|
| <b>4932R</b><br>Replacement Head Cover for 4500 Rim Device  |        | US3    | 104.90    | 105036    | 20        |
|   |        | US4    | 104.90    | 105037    |           |
|   |        | US10B  | 104.90    | 105039    |           |
|   |        | US26   | 104.90    | 105040    |           |
|   |        | US26D  | 104.90    | 105041    |           |
|   |        | US32D  | 123.06    | 105042    |           |
| <b>4932S</b><br>Replacement Head Cover for 4500 SVR Device  |        | US3    | 104.90    | 105043    | 20        |
|   |        | US4    | 104.90    | 105044    |           |
|   |        | US10B  | 104.90    | 105046    |           |
|   |        | US26   | 104.90    | 105047    |           |
|   |        | US26D  | 104.90    | 105048    |           |
|   |        | US32D  | 123.06    | 105049    |           |
| <b>4936</b><br>24" Extension Rod Kit<br><br>Includes 24" extension rod, rod connector, rod guide,<br>and wood and machine screws. |        | US3    | 37.00     | 129372    | 24        |
|   |        | US4    | 37.00     | 129373    |           |
|   |        | US10B  | 37.00     | 129375    |           |
|   |        | US26   | 37.00     | 129376    |           |
|   |        | US26D  | 37.00     | 129377    |           |
|   |        | US32D  | 37.00     | 129378    |           |
| <b>4937</b><br>36" Extension Rod Kit<br><br>Includes 36" extension rod, rod connector, rod guide,<br>and wood and machine screws. |        | US3    | 41.74     | 129381    | 24        |
|   |        | US4    | 41.74     | -         |           |
|   |        | US10B  | 41.74     | 129384    |           |
|   |        | US26   | 41.74     | 129385    |           |
|   |        | US26D  | 41.74     | 129386    |           |
|   |        | US32D  | 41.74     | 129387    |           |
| <b>4940</b><br>Alarm Kit for 4500 Series<br><br>Latchbolt monitor switch and tamper<br>switch available. See page 29.             | 36"    | US3    | 494.02    | 137621    | 24        |
|   |        | US4    | 494.02    | 137622    |           |
|   |        | US10B  | 494.02    | 137595    |           |
|   |        | US26   | 494.02    | 137624    |           |
|   |        | US26D  | 494.02    | 137596    |           |
|   |        | US32D  | 494.02    | 137597    |           |
|   | 48"    | US3    | 494.02    | 164020    |           |
|   |        | US4    | 494.02    | 164029    |           |
|   |        | US10B  | 494.02    | 164008    |           |
|   |        | US26   | 494.02    | -         |           |
|   |        | US26D  | 494.02    | 164016    |           |
|   |        | US32D  | 494.02    | 164025    |           |

1.U/M is each unless otherwise noted.



## Exit Devices - 4500



| Description  | Finish | 2022 List | Stock No. | Case Qty. |
|--|--------|-----------|-----------|-----------|
| <b>4945</b><br>Top Strike Standard for 4501 CVR    | US32D  | 57.19     | 150417    |           |
| <b>4945F</b><br>Fire Rated Top Strike for 4501 CVR | US32D  | 70.61     | 150418    |           |
| <b>2-649-0031</b><br>Rod Guide Replacement Pack    | US3    | 11.51     | 3478      |           |
| <b>2-649-0032</b><br>Rod Guide Replacement Pack    | US4    | 11.51     | 3477      |           |
| <b>2-649-0033</b><br>Rod Guide Replacement Pack    | US10B  | 11.51     | 3473      |           |
| <b>2-649-0034</b><br>Rod Guide Replacement Pack    | US26   | 11.51     | 3467      |           |
| <b>2-649-0035</b><br>Rod Guide Replacement Pack    | US26D  | 11.51     | 3466      |           |
| <b>2-649-0036</b><br>Rod Guide Replacement Pack    | US32D  | 11.51     | 3464      |           |
| <b>2-649-0037</b><br>Rod Guide Replacement Pack    |        |           |           |           |
| <b>2-649-0038</b><br>End Cap Replacement           | US3    | 37.00     | 3462      |           |
| <b>2-649-0039</b><br>End Cap Replacement           | US4    | 37.00     | 3454      |           |
| <b>2-649-0041</b><br>End Cap Replacement           | US10B  | 37.00     | 3435      |           |
| <b>2-649-0042</b><br>End Cap Replacement           | US26   | 37.00     | 3433      |           |
| <b>2-649-0043</b><br>End Cap Replacement           | US26D  | 37.00     | 3424      |           |
| <b>2-649-0044</b><br>End Cap Replacement           | US32D  | 37.00     | 3414      |           |
| <b>2-649-0218</b><br>Flush End Cap                 | US3    | 39.90     | 182923    |           |
| <b>2-649-0220</b><br>Flush End Cap                 | US4    | 39.90     | 182925    |           |
| <b>2-649-0215</b><br>Flush End Cap                 | US10B  | 39.90     | 182920    |           |
| <b>2-649-0216</b><br>Flush End Cap                 | US26   | 39.90     | 182921    |           |
| <b>2-649-0217</b><br>Flush End Cap                 | US26D  | 39.90     | 182922    |           |



| Description   | Finish | 2022 List | Stock No. | Case Qty. |
|---|--------|-----------|-----------|-----------|
| <b>2-649-0219</b><br>Flush End Cap  | US32D  | 43.09     | 182924    |           |
| Note: All end caps come with bracket and fasteners                                  |        |           |           |           |
| <b>2-649-0049</b><br>Spring Cage and Hanging Pin for 4500 Series<br>Escutcheon Trim | -      | 17.54     | 3405      |           |
| <b>2-649-0060</b><br>Top or Bottom Latch Cover Replacement Pack                     | US3    | 65.93     | 3333      |           |
| <b>2-649-0061</b><br>Top or Bottom Latch Cover Replacement Pack                     | US4    | 65.93     | 3306      |           |
| <b>2-649-0062</b><br>Top or Bottom Latch Cover Replacement Pack                     | US10B  | 65.93     | 3299      |           |
| <b>2-649-0063</b><br>Top or Bottom Latch Cover Replacement Pack                     | US26   | 65.93     | 3297      |           |
| <b>2-649-0064</b><br>Top or Bottom Latch Cover Replacement Pack                     | US26D  | 65.93     | 3296      |           |
| <b>2-649-0065</b><br>Top or Bottom Latch Cover Replacement Pack                     | US32D  | 65.93     | 3295      |           |
| <b>2-649-0066</b><br>Top or Bottom Latch Cover Replacement Pack                     |        |           |           |           |
| <b>2-649-0074</b><br>SVR Screwpack - Latch, rod, rod connector,<br>rod guide        | US3    | 10.10     | 103548    |           |
| <b>2-649-0075</b><br>SVR Screwpack - Latch, rod, rod connector,<br>rod guide        | US4    | 10.10     | 103550    |           |
| <b>2-649-0076</b><br>SVR Screwpack - Latch, rod, rod connector,<br>rod guide        | US10B  | 10.10     | 103552    |           |
| <b>2-649-0077</b><br>SVR Screwpack - Latch, rod, rod connector,<br>rod guide        | US26   | 10.10     | 103553    |           |
| <b>2-649-0078</b><br>SVR Screwpack - Latch, rod, rod connector,<br>rod guide        | US26D  | 10.10     | 103554    |           |
| <b>2-649-0079</b><br>SVR Screwpack - Latch, rod, rod connector,<br>rod guide        | US32D  | 10.10     | 103555    |           |
| <b>2-649-0080</b><br>SVR Screwpack - Latch, rod, rod connector,<br>rod guide        |        |           |           |           |
| <b>2-649-0081</b><br>SVR Screwpack - Top and bottom strike                          | -      | 6.09      | 103556    |           |



1.U/M is each unless otherwise noted.

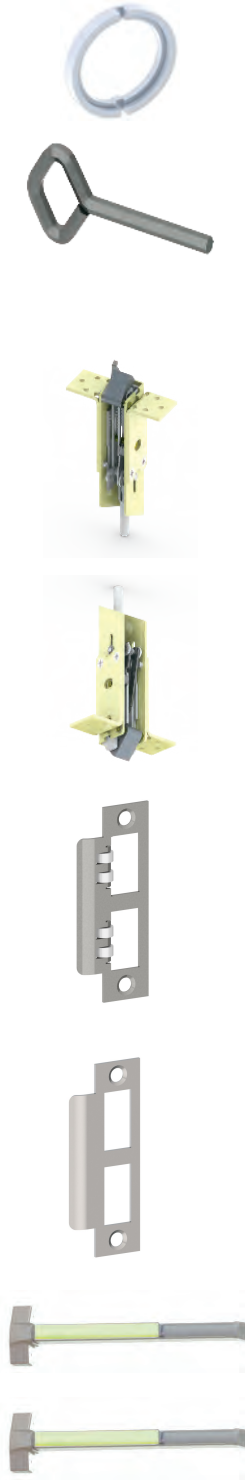


## Exit Devices - 4500



| Description   | Finish | 2022 List | Stock No. | Case Qty. |
|---|--------|-----------|-----------|-----------|
| <b>2-649-0082</b><br>Screwpack - Chassis, end cap, head cover, rim strike<br>(4500 & 4600 Series)   | US3    | 18.22     | 103558    |           |
| <b>2-649-0083</b><br>Screwpack - Chassis, end cap, head cover, rim strike<br>(4500 & 4600 Series)   | US4    | 18.22     | 103559    |           |
| <b>2-649-0085</b><br>Screwpack - Chassis, end cap, head cover, rim strike<br>(4500 & 4600 Series)   | US10B  | 18.22     | 103561    |           |
| <b>2-649-0086</b><br>Screwpack - Chassis, end cap, head cover, rim strike<br>(4500 & 4600 Series)   | US26   | 18.22     | 103562    |           |
| <b>2-649-0087</b><br>Screwpack - Chassis, end cap, head cover, rim strike<br>(4500 & 4600 Series)   | US26D  | 18.22     | 103563    |           |
| <b>2-649-0088</b><br>Screwpack - Chassis, end cap, head cover, rim strike<br>(4500 & 4600 Series)   | US32D  | 18.22     | 103582    |           |
| <b>2-649-0166</b><br>Firebolt Kit for Fire Rated 4500 Series LBR and<br>CLB devices.<br>Includes fire bolt, plastic plug, head cover plug, screws,<br>and instructions.<br><br>Must use firebolt with fire rated pairs of less bottom rod<br>vertical rod devices to ensure the device's fire rating. | -      | 67.96     | 124539    |           |
| <b>2-649-0167</b><br>LBR Replacement Head Cover Plug<br>Shipped standard if device ordered as LBR   | -      | 10.10     | 124540    |           |
| <b>2-649-0168</b><br>Latchbolt Monitor Switch for 4940 and 4941<br>Alarm Kits   | -      | 169.47    | 124228    |           |
| <b>2-649-0177</b><br>Rod to Rod Connector   | US3    | 10.10     | 129398    |           |
| <b>2-649-0178</b><br>Rod to Rod Connector   | US4    | 10.10     | -         |           |
| <b>2-649-0179</b><br>Rod to Rod Connector   | US10B  | 10.10     | 129401    |           |
| <b>2-649-0180</b><br>Rod to Rod Connector   | US26   | 10.10     | 129402    |           |
| <b>2-649-0181</b><br>Rod to Rod Connector   | US26D  | 10.10     | 129403    |           |
| <b>2-649-0182</b><br>Rod to Rod Connector   | US32D  | 10.10     | 129404    |           |
| <b>2-649-0183</b><br>Rod to Rod Connector   |        |           |           |           |



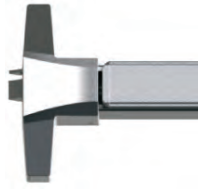


| Description   | Finish | 2022 List | Stock No. | Case Qty. |
|---|--------|-----------|-----------|-----------|
| <b>2-649-0406</b><br>45PN/47PN Cylinder Cup Spacer                  | -      | 10.83     | 182414    |           |
| <b>2-649-1074</b><br>Hex Key for Dogging 5/32"<br>10 pack           | -      | 7.45      | 122690    |           |
| <b>2-649-1090</b><br>Tamper Switch for 4940 and 4941 alarm kits     | -      | 169.47    | 137590    |           |
| <b>2-649-1108</b><br>4501 CVR Top Latch Assembly Replacement Kit    | -      | 102.25    | -         |           |
| <b>2-649-1109</b><br>4501 CVR Bottom Latch Assembly Replacement Kit | -      | 102.25    | 150416    |           |
| <b>2-649-0440</b><br>4500 Series Mortise Exit Strike                | US10B  | 30.96     | 070809    |           |
| <b>2-649-0441</b><br>4500 Series Mortise Exit Strike                | US26D  | 30.96     | 070801    |           |
| <b>2-649-0442</b><br>4500 Series Mortise Exit Strike                | US32D  | 30.96     | 070791    |           |
| <b>2-649-0443</b><br>4500 Series Fire Rated Mortise Exit Strike     | US10B  | 30.96     | 070792    |           |
| <b>2-649-0444</b><br>4500 Series Fire Rated Mortise Exit Strike     | US26D  | 30.96     | 070793    |           |
| <b>2-649-0445</b><br>4500 Series Fire Rated Mortise Exit Strike     | US32D  | 30.96     | 070788    |           |
| <b>2-649-0250</b><br>4500/4600 Series 36" Photoluminescent Push Bar |        | 307.80    | 185696    |           |
| <b>2-649-0257</b><br>4500/4600 Series 48" Photoluminescent Push Bar |        | 369.36    | 185792    |           |

1.U/M is each unless otherwise noted.



# Exit Devices - 4600



| Description   | Length    | Finish | 2022 List | Stock No. | List Fire Rated | Stock No. | Case Qty. |
|---|-----------|--------|-----------|-----------|-----------------|-----------|-----------|
| <b>4601 RIM</b>   | 36"       | US3    | 1,758.28  | 158394    | 1,965.98        | 158413    | 3         |
| Narrow Stile Rim  | Exit Only | US4    | 1,758.28  | 158396    | 1,965.98        | 158347    |           |
| Grade 1   |           | US10B  | 1,758.28  | 158343    | 1,965.98        | 158345    |           |
| Non-Handed  |           | US26   | 1,758.28  | 158390    | 1,965.98        | 158411    |           |
|   |           | US26D  | 1,610.41  | 158324    | 1803.34         | 158412    |           |
|   |           | US32D  | 1,758.28  | 158344    | 1,965.98        | 158346    |           |
| For cylinder dogging (specify CD), add \$52.21 to the list price. 3902 mortise cylinder with standard cam must be ordered separately. Cylinder length of 1-1/8" (29mm) - 1-3/8" (35mm) is required. |           |        |           |           |                 |           |           |
| Refer to page 4 for electric modification pricing.  |           |        |           |           |                 |           |           |
| Anti-microbial coating, add \$57.43 to list price.  |           |        |           |           |                 |           |           |
| Less dogging (specify LD-NON FIRE RATED ONLY), add \$68.60 list price.  |           |        |           |           |                 |           |           |
|   | 48"       | US3    | 1,810.73  | 158401    | 2,022.37        | -         | 3         |
|   | Exit Only | US4    | 1,810.73  | 158402    | 2,022.37        | -         |           |
|   |           | US10B  | 1,810.73  | 158398    | 2,022.37        | -         |           |
|   |           | US26   | 1,810.73  | 158399    | 2,022.37        | -         |           |
|   |           | US26D  | 1,657.50  | 156239    | 1,859.11        | -         |           |
|   |           | US32D  | 1,810.73  | 156240    | 2,022.37        | 156242    |           |



|   |           |                    |          |        |   |   |   |
|---|-----------|--------------------|----------|--------|---|---|---|
| <b>4601 CVR (Non-Fire Rated)</b>  | 36" x 84" | US3 <sup>3</sup>   | 2,487.02 | -      | - | - | 3 |
| Grade 1   | Exit Only | US4 <sup>3</sup>   | 2,450.09 | -      | - | - |   |
| Non-Handed  |           | US10B <sup>3</sup> | 2,450.09 | -      | - | - |   |
|   |           | US26 <sup>3</sup>  | 2,487.02 | -      | - | - |   |
|   |           | US26D              | 2,425.46 | 040789 | - | - |   |
|   |           | US32D              | 2,450.09 | 040784 | - | - |   |
|   |           | BLK <sup>3</sup>   | 2,450.09 | -      | - | - |   |
| Cylinder Dogging (specify CD), add \$52.21 to list price. 3902 mortise cylinder with standard cam must be ordered separately. Cylinder length of 1-1/8" (29mm) - 1-3/8" (35mm) is required. |           |                    |          |        |   |   |   |
| Refer to page 4 for electric modification pricing.  |           |                    |          |        |   |   |   |
| Refer to page 25 for extension rod kits for doors over 8 feet in height.  |           |                    |          |        |   |   |   |
| Anti-microbial coating, add \$57.43 to list price.  |           |                    |          |        |   |   |   |
| Less dogging (specify LD-NON FIRE RATED ONLY), add \$68.60 list price.  |           |                    |          |        |   |   |   |
|   | 36" x 96" | US3 <sup>3</sup>   | 2,536.27 | -      | - | - | 3 |
|   | Exit Only | US4 <sup>3</sup>   | 2,499.34 | -      | - | - |   |
|   |           | US10B <sup>3</sup> | 2,499.34 | -      | - | - |   |
|   |           | US26 <sup>3</sup>  | 2,536.27 | -      | - | - |   |
|   |           | US26D <sup>3</sup> | 2,474.71 | -      | - | - |   |
|   |           | US32D <sup>3</sup> | 2,499.34 | -      | - | - |   |
|   |           | BLK <sup>3</sup>   | 2,499.34 | -      | - | - |   |
|   | 48" x 84" | US3 <sup>3</sup>   | 2,560.90 | -      | - | - | 3 |
|   | Exit Only | US4 <sup>3</sup>   | 2,536.27 | -      | - | - |   |
|   |           | US10B <sup>3</sup> | 2,560.90 | -      | - | - |   |
|   |           | US26 <sup>3</sup>  | 2,560.90 | -      | - | - |   |
|   |           | US26D              | 2,499.34 | 040783 | - | - |   |
|   |           | US32D              | 2,536.27 | 040785 | - | - |   |
|   |           | BLK <sup>3</sup>   | 2,536.27 | -      | - | - |   |
|   | 48" x 96" | US3 <sup>3</sup>   | 2,610.14 | -      | - | - | 3 |
|   | Exit Only | US4 <sup>3</sup>   | 2,585.52 | -      | - | - |   |
|   |           | US10B <sup>3</sup> | 2,610.14 | -      | - | - |   |
|   |           | US26 <sup>3</sup>  | 2,610.14 | -      | - | - |   |
|   |           | US26D <sup>3</sup> | 2,548.58 | -      | - | - |   |
|   |           | US32D <sup>3</sup> | 2,585.52 | -      | - | - |   |
|   |           | BLK <sup>3</sup>   | 2,585.52 | -      | - | - |   |





| Description  | Length    | Finish             | 2022 List | Stock No. | Listed Fire Rated | Stock No. | Case Qty. |
|--|-----------|--------------------|-----------|-----------|-------------------|-----------|-----------|
| <b>4601 CLB (Non-Fire Rated)</b><br>Grade 1<br>Non-Handed<br><br>Cylinder Dogging (specify CD)<br>add \$53.06 to list price. 3902<br>mortise cylinder with standard<br>cam must be ordered<br>separately. Cylinder length of<br>1-1/8" (29mm) -<br>1-3/8" (35mm) is required.<br><br>Refer to page 4 for electric<br>modification pricing.<br><br>Refer to page 25 for extension<br>rod kits for doors over 8 feet in<br>height. | 36" x 84" | US3 <sup>3</sup>   | 2,487.02  | -         | -                 | -         | 3         |
|  | Exit Only | US4 <sup>3</sup>   | 2,450.09  | -         | -                 | -         |           |
|  |           | US10B <sup>3</sup> | 2,450.09  | -         | -                 | -         |           |
|  |           | US26 <sup>3</sup>  | 2,487.02  | -         | -                 | -         |           |
|  |           | US26D              | 2,425.46  | 035049    | -                 | -         |           |
|  |           | US32D              | 2,450.09  | 035050    | -                 | -         |           |
|  |           | BLK <sup>3</sup>   | 2,450.09  | -         | -                 | -         |           |
| Anti-microbiacoatingadd<br>\$57.43to list price.<br><br>Less dogging (specify LD-NON<br>FIRE RATED ONLY), add<br>\$48.60 list price.   | 36" x 96" | US3 <sup>3</sup>   | 2,536.27  | -         | -                 | -         | 3         |
|  | Exit Only | US4 <sup>3</sup>   | 2,499.34  | -         | -                 | -         |           |
|  |           | US10B <sup>3</sup> | 2,499.34  | -         | -                 | -         |           |
|  |           | US26 <sup>3</sup>  | 2,536.27  | -         | -                 | -         |           |
|  |           | US26D <sup>3</sup> | 2,474.71  | -         | -                 | -         |           |
|  |           | US32D <sup>3</sup> | 2,499.34  | -         | -                 | -         |           |
|  |           | BLK <sup>3</sup>   | 2,499.34  | -         | -                 | -         |           |
|  | 48" x 84" | US3 <sup>3</sup>   | 2,560.90  | -         | -                 | -         | 3         |
|  | Exit Only | US4 <sup>3</sup>   | 2,536.27  | -         | -                 | -         |           |
|  |           | US10B <sup>3</sup> | 2,560.90  | -         | -                 | -         |           |
|  |           | US26 <sup>3</sup>  | 2,560.90  | -         | -                 | -         |           |
|  |           | US26D              | 2,499.34  | 035051    | -                 | -         |           |
|  |           | US32D              | 2,536.27  | 035052    | -                 | -         |           |
|  |           | BLK <sup>3</sup>   | 2,536.27  | -         | -                 | -         |           |
|  | 48" x 96" | US3 <sup>3</sup>   | 2,610.14  | -         | -                 | -         | 3         |
|  | Exit Only | US4 <sup>3</sup>   | 2,585.52  | -         | -                 | -         |           |
|  |           | US10B <sup>3</sup> | 2,610.14  | -         | -                 | -         |           |
|  |           | US26 <sup>3</sup>  | 2,610.14  | -         | -                 | -         |           |
|  |           | US26D <sup>3</sup> | 2,548.58  | -         | -                 | -         |           |
|  |           | US32D <sup>3</sup> | 2,585.52  | -         | -                 | -         |           |
|  |           | BLK <sup>3</sup>   | 2,585.52  | -         | -                 | -         |           |

1. U/M is each unless otherwise noted.  
2. Available at extended lead time.



## Exit Devices - 4600



| Description   | Function           | Finish | 2022 List | Stock No. | Case Qty. |
|---|--------------------|--------|-----------|-----------|-----------|
| <b>46BE</b>   |                    |        |           |           |           |
| Blank Escutcheon                                    |                    |        |           |           |           |
| Tactile Warning - add \$452.21 to list price.       |                    |        |           |           |           |
| Anti-microbial coating - add \$57.43 to list price. |                    |        |           |           |           |
| <b>Archer Lever</b>                                 | 14 Always Operable | US3    | 645.27    | -         | 6         |
|   |                    | US4    | 645.27    | -         |           |
|   | US10B              | 645.27 | 171033    |           |           |
|   | US26               | 645.27 | 171089    |           |           |
|   | US26D              | 619.79 | 171090    |           |           |
| <b>August Lever</b>                                 |                    | US3    | 645.27    | -         | 6         |
|   |                    | US4    | 645.27    | -         |           |
|   |                    | US10B  | 645.27    | -         |           |
|   |                    | US26   | 645.27    | 171088    |           |
|   |                    | US26D  | 619.79    | 171096    |           |
| <b>William Lever</b>                                |                    | US3    | 645.27    | -         | 6         |
|   |                    | US4    | 645.27    | -         |           |
|   |                    | US10B  | 645.27    | 171083    |           |
|   |                    | US26   | 645.27    | -         |           |
|   |                    | US26D  | 619.79    | 171091    |           |
| <b>Withnell Lever</b>                               |                    | US3    | 645.27    | -         | 6         |
|   |                    | US4    | 645.27    | -         |           |
|   |                    | US10B  | 645.27    | 171085    |           |
|   |                    | US26   | 645.27    | -         |           |
|   |                    | US26D  | 619.79    | 171097    |           |



|  |                                     |       |        |        |   |
|--|-------------------------------------|-------|--------|--------|---|
| <b>46CE</b>  |                                     |       |        |        |   |
| Cylinder Escutcheon  |                                     |       |        |        |   |
| Requires a 3902 mortise cylinder (with 3976 L cam) sold separately. Tactile Warning - add \$52.21 to list price. |                                     |       |        |        |   |
| Anti-microbial coating - add \$57.43 to list price.  |                                     |       |        |        |   |
| <b>Archer Lever</b>  | 08<br>Key locks or<br>unlocks lever | US3   | 645.27 | -      | 6 |
|  |                                     | US4   | 645.27 | 171514 |   |
|  |                                     | US10B | 645.27 | 171483 |   |
|  |                                     | US26  | 645.27 | 171504 |   |
|  |                                     | US26D | 619.79 | 171508 |   |
| <b>August Lever</b>  |                                     | US3   | 645.27 | -      | 6 |
|  |                                     | US4   | 645.27 | -      |   |
|  |                                     | US10B | 645.27 | 171503 |   |
|  |                                     | US26  | 645.27 | -      |   |
|  |                                     | US26D | 619.79 | 171212 |   |





| Description  | Function                        | Finish | 2022 List | Stock No. | Case Qty. |
|--|---------------------------------|--------|-----------|-----------|-----------|
| <b>William Lever</b>   |                                 | US3    | 645.27    | -         | 6         |
|  |                                 | US4    | 645.27    | -         |           |
|  |                                 | US10B  | 645.27    | 171484    |           |
|  |                                 | US26   | 645.27    | -         |           |
|  |                                 | US26D  | 619.79    | 171211    |           |
| <b>Withnell Lever</b>  |                                 | US3    | 645.27    | 171513    | 6         |
|  |                                 | US4    | 645.27    | 171518    |           |
|  |                                 | US10B  | 645.27    | 171129    |           |
|  |                                 | US26   | 645.27    | 171507    |           |
|  |                                 | US26D  | 619.79    | 171509    |           |
| <hr/>  |                                 |        |           |           |           |
| <b>46DT</b><br>Dummy Trim<br>Tactile Warning - add \$52.21 to list price.<br>Anti-microbial coating - add \$57.43 to list price. |                                 | US3    | 645.27    | -         | 6         |
|  |                                 | US4    | 645.27    | -         |           |
|  |                                 | US10B  | 645.27    | 171228    |           |
|  |                                 | US26   | 645.27    | 171234    |           |
|  |                                 | US26D  | 619.79    | 171283    |           |
| <b>Archer Lever</b>  | 02                              | US3    | 645.27    | -         | 6         |
|  | Pull when device is dogged down | US4    | 645.27    | -         |           |
|  |                                 | US10B  | 645.27    | 171228    |           |
|  |                                 | US26   | 645.27    | 171234    |           |
|  |                                 | US26D  | 619.79    | 171283    |           |
| <b>August Lever</b>  |                                 | US3    | 645.27    | -         | 6         |
|  |                                 | US4    | 645.27    | -         |           |
|  |                                 | US10B  | 645.27    | -         |           |
|  |                                 | US26   | 645.27    | -         |           |
|  |                                 | US26D  | 619.79    | 171285    |           |
| <b>William Lever</b>   |                                 | US3    | 645.27    | -         | 6         |
|  |                                 | US4    | 645.27    | -         |           |
|  |                                 | US10B  | 645.27    | 171375    |           |
|  |                                 | US26   | 645.27    | -         |           |
|  |                                 | US26D  | 619.79    | -         |           |
| <b>Withnell Lever</b>  |                                 | US3    | 645.27    | -         | 6         |
|  |                                 | US4    | 645.27    | 171412    |           |
|  |                                 | US10B  | 645.27    | 171233    |           |
|  |                                 | US26   | 645.27    | 171282    |           |
|  |                                 | US26D  | 619.79    | 171287    |           |



# Exit Devices - 4600



| Description   | Function               | Finish | 2022 List | Stock No. | Case Qty. |
|---|------------------------|--------|-----------|-----------|-----------|
| <b>46NL</b>   |                        |        |           |           |           |
| Night Latch   |                        |        |           |           |           |
| Requires a 3901 rim cylinder (with long tailpiece) sold separately. |                        |        |           |           |           |
| Use an extra 1/4" blocking ring with IC Core cylinder.              |                        |        |           |           |           |
| Maximum door thickness compatibility is 1-3/4" (44mm).              |                        |        |           |           |           |
| Tactile Warning - add \$52.21 to list price.                        |                        |        |           |           |           |
| Anti-microbial coating - add \$57.43 to list price.                 |                        |        |           |           |           |
| <b>Archer Lever</b>   | 03                     | US3    | 645.27    | 171538    | 6         |
|   | Key retracts latchbolt | US4    | 645.27    | -         |           |
|   |                        | US10B  | 645.27    | 171527    |           |
|   |                        | US26   | 645.27    | -         |           |
|   |                        | US26D  | 619.79    | 171534    |           |
| <b>August Lever</b>   |                        | US3    | 645.27    | -         | 6         |
|   |                        | US4    | 645.27    | -         |           |
|   |                        | US10B  | 645.27    | 171529    |           |
|   |                        | US26   | 645.27    | 171533    |           |
|   |                        | US26D  | 619.79    | 171536    |           |

| Description   | Length | Finish | 2022 List | Stock No. | Case Qty. |
|---|--------|--------|-----------|-----------|-----------|
| <b>William Lever</b>  |        | US3    | 645.27    | -         | 6         |
|   |        | US4    | 645.27    | -         |           |
|   |        | US10B  | 645.27    | 171528    |           |
|   |        | US26   | 645.27    | -         |           |
|   |        | US26D  | 619.79    | 171535    |           |
| <b>Withnell Lever</b>   |        | US3    | 645.27    | -         | 6         |
|   |        | US4    | 645.27    | 171545    |           |
|   |        | US10B  | 645.27    | 171530    |           |
|   |        | US26   | 645.27    | -         |           |
|   |        | US26D  | 619.79    | 171537    |           |
| <b>4920</b><br>Strike for use with 4500 or 4600 Series Rim Exit Device.<br>Optional - order separately                                      |        | US32D  | 88.77     | 16208     | 24        |
| <b>4920F</b><br>Fire rated strike for use with 4500 or 4600 Series Fire Rated Rim Exit Device.<br>Included standard with fire rated device. |        | US32D  | 123.06    | 16207     | 24        |
| <b>4925C</b><br>Cylinder Dogging Conversion Kit for Panic Rated 4600 Series CVR and CLB Device.   | 36"    | US10B  | 47.20     | 157216    | 48        |
|   |        | US26   | 47.20     | 157217    |           |
|   |        | US26D  | 47.20     | 157218    |           |
|   |        | US32D  | 47.20     | 157219    |           |
| Requires a 3902 mortise cylinder (with standard cam) sold separately.<br>Cylinder length of 1-1/8" (29mm) - 1-3/8" (35mm) is required.      | 48"    | US10B  | 49.57     | 157274    | 36        |
|   |        | US26   | 49.57     | 157275    |           |
|   |        | US26D  | 49.57     | 157276    |           |
|   |        | US32D  | 49.57     | 157277    |           |
| <b>4925R</b><br>Cylinder Dogging Conversion Kit for Panic Rated 4600 Series Rim Device.   | 36"    | US3    | 53.80     | 157187    | 48        |
|   |        | US4    | 53.80     | 157191    |           |
|   |        | US10B  | 53.80     | 157193    |           |
|   |        | US26   | 53.80     | -         |           |
|   |        | US26D  | 53.80     | 157195    |           |
|   |        | US32D  | 53.80     | 157196    |           |
| Requires a 3902 mortise cylinder (with standard cam) sold separately.<br>Cylinder length of 1-1/8" (29mm) - 1-3/8" (35mm) is required.      | 48"    | US3    | 56.51     | -         | 36        |
|   |        | US4    | 56.51     | -         |           |
|   |        | US10B  | 56.51     | 157200    |           |
|   |        | US26   | 56.51     | 157201    |           |
|   |        | US26D  | 56.51     | 157202    |           |
|   |        | US32D  | 56.51     | 157203    |           |



## Exit Devices - 4600



| Description  | Length | Finish | 2022 List | Stock No. | Case Qty. |
|--|--------|--------|-----------|-----------|-----------|
| <b>4941R</b><br>Alarm Kit for 4600 Series Rim Device<br><br>Latchbolt monitor switch and tamper switch available.        | 36"    | US3    | 449.02    | -         |           |
|  |        | US4    | 449.02    | -         |           |
|  |        | US10B  | 449.02    | -         |           |
|  |        | US26   | 449.02    | -         |           |
|  |        | US26D  | 449.02    | 167349    |           |
|  |        | US32D  | 449.02    | 167464    |           |
|  | 48"    | US3    | 449.02    | -         |           |
|  |        | US4    | 449.02    | -         |           |
|  |        | US10B  | 449.02    | -         |           |
|  |        | US26   | 449.02    | -         |           |
|  |        | US26D  | 449.02    | 147150    |           |
|  |        | US32D  | 449.02    | -         |           |
| <b>4950</b><br>Blade stop strike for use with 4600 Series Rim Exit Device.<br>Included standard with panic rated device. |        | US32D  | 88.77     | 139746    | 24        |
| <b>4951</b><br>Single rabbet strike for use with 4600 Series Rim Exit Device<br>Optional - order separately              |        | US32D  | 88.77     | 139748    | 24        |
| <b>4952</b><br>Semi-flush mount strike for use with 4600 Series Rim Exit Device<br>Optional - order separately           |        | US32D  | 88.77     | 139747    | 24        |
| <b>4960R</b><br>Shim Kit for 4600 Series Rim Exit Device<br><br>Packaged 2 each 1/8" shims                               |        | US3    | 95.54     | 139716    | 24        |
|  |        | US4    | 95.54     | 139717    |           |
|  |        | US10B  | 95.54     | 139719    |           |
|  |        | US26   | 95.54     | -         |           |
|  |        | US26D  | 95.54     | 139721    |           |
|  |        | US32D  | 112.35    | 139722    |           |





| Description  | Finish | 2022 List | Stock No. | Case Qty. |
|--|--------|-----------|-----------|-----------|
| <b>4965R</b><br>Replacement Head Cover for 4600 Rim Device                 | US3    | 95.54     | 139700    | 20        |
|  | US4    | 95.54     | 139707    |           |
|  | US10B  | 95.54     | 139709    |           |
|  | US26   | 95.54     | -         |           |
|  | US26D  | 95.54     | 139711    |           |
|  | US32D  | 112.35    | 139712    |           |
| <b>4965C</b><br>Replacement Head Cover for 4600 CVR/CLB Device             | US10B  | 95.54     | 166451    | 20        |
|  | US26D  | 95.54     | 166453    |           |
|  | US32D  | 112.35    | 166455    |           |
| <b>2-649-0038</b><br>End Cap Replacement                                   | US3    | 37.00     | 3462      |           |
| <b>2-649-0039</b><br>End Cap Replacement                                   | US4    | 37.00     | 3454      |           |
| <b>2-649-0041</b><br>End Cap Replacement                                   | US10B  | 37.00     | 3435      |           |
| <b>2-649-0042</b><br>End Cap Replacement                                   | US26   | 37.00     | 3433      |           |
| <b>2-649-0043</b><br>End Cap Replacement                                   | US26D  | 37.00     | 3424      |           |
| <b>2-649-0044</b><br>End Cap Replacement                                   | US32D  | 37.00     | 3414      |           |
| <b>2-649-0218</b><br>Flush End Cap   | US3    | 43.09     | 182923    |           |
| <b>2-649-0220</b><br>Flush End Cap   | US4    | 43.09     | 182925    |           |
| <b>2-649-0215</b><br>Flush End Cap   | US10B  | 43.09     | 182920    |           |
| <b>2-649-0216</b><br>Flush End Cap   | US26   | 43.09     | 182921    |           |
| <b>2-649-0217</b><br>Flush End Cap   | US26D  | 43.09     | 182922    |           |
| <b>2-649-0219</b><br>Flush End Cap   | US32D  | 43.09     | 182924    |           |
| Note: All end caps come with bracket and fasteners                         |        |           |           |           |
| <b>2-649-0168</b><br>Latchbolt Monitor Switch for 4940 and 4941 Alarm Kits | -      | 169.47    | 124228    |           |
| <b>2-649-1074</b><br>Hex Key for Dogging 5/32"<br>10 pack                  | -      | 6.77      | 122690    |           |
| <b>2-649-1090</b><br>Tamper Switch for 4940 and 4941 Alarm Kits            | -      | 169.47    | 137590    |           |

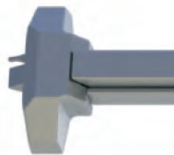


# Exit Devices - 4600



| Description  | Finish | 2022 List | Stock No. | Case Qty. |
|--|--------|-----------|-----------|-----------|
| <b>4929C</b><br>4929 CVR/CLB Rod Replacement PK 46-5/8" US26D<br>(4500/4600) | -      | 69.75     | 165570    |           |
| <b>2-649-0596</b><br>4600 CVR Bottom Strike Packaged Assembly                | -      | 34.24     | 0039704   |           |
| <b>2-649-0598</b><br>4600 CVR Top Strike Packaged Assembly                   | -      | 34.24     | 039700    |           |
| <b>2-649-0581</b><br>4600 CVR Top Latch Assembly (no screws)                 | -      | 117.94    | 039696    |           |
| <b>2-649-0582</b><br>4600 CVR Bottom Latch Assembly (no screws)              | -      | 121.63    | 039697    |           |
| <b>2-649-0580</b><br>4600 CVR Rod Connector Pack                             | -      | 19.02     | 039698    |           |
| <b>2-649-0597</b><br>4600 Exit Device Chassis Screw Pack                     | -      | 7.61      | 039685    |           |
| <b>2-649-0598</b><br>4600 CVR Latch Screw Pack, 26D                          | 26D    | 6.34      | 039682    |           |
| <b>2-649-0589</b><br>4600 CVR Latch Screw Pack, 32D                          | 32D    | 6.34      | 039675    |           |
| <b>2-649-0583</b><br>4600 CVR Latch Screw Pack, US3                          | US3    | 6.34      | 039671    |           |
| <b>2-649-0584</b><br>4600 CVR Latch Screw Pack, US4                          | US4    | 6.34      | 039664    |           |
| <b>2-649-0586</b><br>4600 CVR Latch Screw Pack, US10B                        | US10B  | 6.34      | 039658    |           |
| <b>2-649-0587</b><br>4600 CVR Latch Screw Pack, US26                         | US26   | 6.34      | 039655    |           |
| <b>2-649-0590</b><br>4600 CVR Latch Screw Pack, BLK                          | BLK    | 6.34      | 039652    |           |





| Description  | Length                 | Finish | 2022 List | Stock No. | Listed Fire Rated | Stock No. | Case Qty. |
|--|------------------------|--------|-----------|-----------|-------------------|-----------|-----------|
| <b>4701 RIM</b><br>Standard Duty<br>Non-Handed   | 36" Exit Only          | ALM    | 384.50    | 098945    | 528.31            | 098474    | 3         |
|  |                        | DBZ    | 384.50    | 098823    | 528.31            | 098430    |           |
|  |                        | US3    | 647.98    | 099106    | 795.85            | 098531    |           |
|  |                        | US32D  | 647.98    | 015815    | 795.85            | 098530    |           |
|  |                        | BLK    | 384.50    | 26282     | 528.31            | 18142     |           |
|  | 48" Exit Only          | ALM    | 432.89    | 098778    | 578.73            | 098389    | 3         |
|  |                        | DBZ    | 432.89    | 098544    | 578.73            | 098387    |           |
|  |                        | US3    | 696.37    | 016113    | 842.20            | 098411    |           |
|  |                        | US32D  | 696.37    | 098788    | 842.20            | 098402    |           |
|  |                        | BLK    | 432.89    | 38784     | 578.73            | 7131      |           |
| <b>4701 SVR</b><br>Standard Duty<br>Non-Handed<br><br>SVR panic devices available on 10' openings. Order extension rod kits separately.<br><br>Less dogging (specify L-NON FIRE RATED ONLY), add \$48.60 list price. | 36" x 84"<br>Exit Only | ALM    | 625.08    | 131988    | 863.75            | 132156    | 3         |
|  |                        | DBZ    | 625.08    | 132022    | 863.75            | 132151    |           |
|  |                        | US3    | 889.97    | 131955    | 1,129.20          | 085302    |           |
|  |                        | US32D  | 889.97    | 131984    | 1,129.20          | 132153    |           |
|  |                        | BLK    | 625.08    | 38785     | 863.75            | 7125      |           |
|  | 36" x 96"<br>Exit Only | ALM    | 674.88    | 132035    | 913.49            | 132156    | 3         |
|  |                        | DBZ    | 674.88    | 132058    | 913.49            | 132183    |           |
|  |                        | US3    | 936.27    | 118174    | 1,177.64          | 085279    |           |
|  | 48" x 84"<br>Exit Only | US32D  | 936.27    | 132026    | 1,177.64          | 132153    |           |
|  |                        | ALM    | 696.37    | 085312    | 936.27            | 132191    | 3         |
| DBZ  |                        | 696.37 | 085281    | 936.27    | 118199            |           |           |
| 48" x 96"<br>Exit Only   | US3                    | 942.36 | 118178    | 1,199.74  | 118195            |           |           |
|  | US32D                  | 942.36 | 132063    | 1,199.74  | 132186            |           |           |
|  | ALM                    | 720.56 | 132091    | 961.14    | 132193            | 3         |           |
|  | DBZ                    | 720.56 | 098945    | 961.14    | 085299            |           |           |
|  | Exit Only              | US3    | 986.07    | 011813    | 1,226.64          | 085301    |           |
|  |                        | US32D  | 986.07    | 132073    | 1,226.64          | 085268    |           |



| Description   | Function | Finish | 2022 List | Stock No. LHR | 2022 List | Stock No. RHR | Case Qty. |
|---|----------|--------|-----------|---------------|-----------|---------------|-----------|
| <b>47BE</b><br>Blank Escutcheon<br>Must specify handing<br>Steel body, zinc lever (US32D has stainless steel cover).<br>For doors thicker than 1-3/4" or when used with a shim kit, specify total door thickness.<br>Tactile Warning - add \$52.21 to list price of item. |          |        |           |               |           |               |           |
| <b>Archer Lever</b>   | 14       | ALM    | 305.83    | 92763         | 305.83    | 92825         | 6         |
|   | Always   | DBZ    | 305.83    | 92760         | 305.83    | 92774         |           |
|   | Operable | US3    | 334.15    | 92764         | 334.15    | 92846         |           |
|   |          | US32D  | 334.15    | 92772         | 334.15    | 92889         |           |
| <b>August Lever</b>   |          | ALM    | 305.83    | 107647        | 305.83    | 107648        | 6         |
|   |          | DBZ    | 305.83    | 107650        | 305.83    | 107649        |           |
|   |          | US3    | 334.15    | 107640        | 334.15    | 107643        |           |
|   |          | US32D  | 334.15    | 107645        | 334.15    | 107646        |           |
| <b>Withnell Lever</b>   |          | ALM    | 305.83    | 92917         | 305.83    | 93139         | 6         |
|   |          | DBZ    | 305.83    | 92906         | 305.83    | 93083         |           |
|   |          | US3    | 334.15    | 92918         | 334.15    | 93173         |           |
|   |          | US32D  | 334.15    | 92919         | 334.15    | 93199         |           |
|   |          | BLK    |           |               | 305.83    | 7126          |           |

1. U/M is each unless otherwise noted.



# Exit Devices - 4700



| Description   | Function                   | Finish | 2022 List | Stock No. LHR | 2022 List | Stock No. RHR | Case Qty. |
|---|----------------------------|--------|-----------|---------------|-----------|---------------|-----------|
| <b>47CE</b>   |                            |        |           |               |           |               |           |
| Cylinder Escutcheon   |                            |        |           |               |           |               |           |
| Must specify handing  |                            |        |           |               |           |               |           |
| Requires a 3902 mortise cylinder (with standard cam) sold separately.                     |                            |        |           |               |           |               |           |
| Steel body, zinc lever (US32D has stainless steel cover).                                 |                            |        |           |               |           |               |           |
| For doors thicker than 1-3/4" or when used with a shim kit, specify total door thickness. |                            |        |           |               |           |               |           |
| Tactile Warning - add \$48.34 to list price of item.                                      |                            |        |           |               |           |               |           |
| <b>Archer Lever</b>   | 08                         | ALM    | 305.83    | 93208         | 305.83    | 93829         | 6         |
|   | Key locks or unlocks lever | DBZ    | 305.83    | 93206         | 305.83    | 93819         |           |
|   |                            | US3    | 334.15    | 93219         | 334.15    | 93903         |           |
|   |                            | US32D  | 334.15    | 93220         | 334.15    | 93913         |           |
| <b>August Lever</b>   |                            | ALM    | 305.83    | 107658        | 305.83    | 107659        | 6         |
|   |                            | DBZ    | 305.83    | 107660        | 305.83    | 107661        |           |
|   |                            | US3    | 334.15    | 107652        | 334.15    | 107654        |           |
|   |                            | US32D  | 334.15    | 107655        | 334.15    | 107657        |           |
| <b>Withnell Lever</b>   |                            | ALM    | 305.83    | 93778         | 305.83    | 95104         | 6         |
|   |                            | DBZ    | 305.83    | 93765         | 305.83    | 95004         |           |
|   |                            | US3    | 334.15    | 93786         | 334.15    | 95118         |           |
|   |                            | US32D  | 334.15    | 93801         | 334.15    | 95143         |           |
|   |                            | BLK    |           |               | 305.83    | 7127          |           |



|   |                                 |       |        |        |        |        |   |
|---|---------------------------------|-------|--------|--------|--------|--------|---|
| <b>47DT</b>   |                                 |       |        |        |        |        |   |
| Dummy Trim  |                                 |       |        |        |        |        |   |
| Must specify handing  |                                 |       |        |        |        |        |   |
| Steel body, zinc lever (US32D has stainless steel cover).                                 |                                 |       |        |        |        |        |   |
| For doors thicker than 1-3/4" or when used with a shim kit, specify total door thickness. |                                 |       |        |        |        |        |   |
| Tactile Warning - add \$52.21 to list price of item.                                      |                                 |       |        |        |        |        |   |
| <b>Archer Lever</b>   | 02                              | ALM   | 305.73 | 92290  | 305.73 | 92306  | 6 |
|   | Pull when device is dogged down | DBZ   | 305.83 | 92257  | 305.83 | 92304  |   |
|   |                                 | US3   | 334.15 | 92291  | 334.15 | 92320  |   |
|   |                                 | US32D | 334.15 | 92293  | 334.15 | 92322  |   |
| <b>August Lever</b>   |                                 | ALM   | 305.73 | 107675 | 305.73 | 107674 | 6 |
|   |                                 | DBZ   | 305.83 | 107676 | 305.83 | 107677 |   |
|   |                                 | US3   | 334.15 | 107669 | 334.15 | 107670 |   |
|   |                                 | US32D | 334.15 | 107671 | 334.15 | 107673 |   |
| <b>Withnell Lever</b>   |                                 | ALM   | 305.73 | 92325  | 305.73 | 92391  | 6 |
|   |                                 | DBZ   | 305.83 | 92324  | 305.83 | 92386  |   |
|   |                                 | US3   | 334.15 | 92367  | 334.15 | 92392  |   |
|   |                                 | US32D | 334.15 | 92189  | 334.15 | 92396  |   |







| Description   | Function               | Finish | 2022 List | Stock No. LHR | 2022 List | Stock No. RHR | Case Qty. |
|---|------------------------|--------|-----------|---------------|-----------|---------------|-----------|
| <b>47NL</b>   |                        |        |           |               |           |               |           |
| Night Latch   |                        |        |           |               |           |               |           |
| Must specify handing  |                        |        |           |               |           |               |           |
| Requires a 3902 mortise cylinder (sold separately) with standard cam.                     |                        |        |           |               |           |               |           |
| Steel body, zinc lever (US32D has stainless steel cover).                                 |                        |        |           |               |           |               |           |
| For doors thicker than 1-3/4" or when used with a shim kit, specify total door thickness. |                        |        |           |               |           |               |           |
| Tactile Warning - add \$52.21 of list price of item.                                      |                        |        |           |               |           |               |           |
| <b>Archer Lever</b>   | 03                     | ALM    | 305.83    | 160645        | 305.83    | 92500         | 6         |
|   | Key retracts latchbolt | DBZ    | 305.83    | 160657        | 305.83    | 92499         |           |
|   |                        | US3    | 334.15    | 160622        | 334.15    | 92531         |           |
|   |                        | US32D  | 334.15    | 160629        | 334.15    | 92532         |           |
| <b>August Lever</b>   | ALM                    | 305.83 | 160655    | 160655        | 305.83    | 160656        | 6         |
|   | DBZ                    | 305.83 | 160664    | 160664        | 305.83    | 160665        |           |
|   | US3                    | 334.15 | 160627    | 160627        | 334.15    | 160628        |           |
|   | US32D                  | 334.15 | 160643    | 160643        | 334.15    | 160644        |           |
| <b>Withnell Lever</b>   | ALM                    | 305.83 | 160649    | 160649        | 305.83    | 160652        | 6         |
|   | DBZ                    | 305.83 | 160660    | 160660        | 305.83    | 160662        |           |
|   | US3                    | 334.15 | 160624    | 160624        | 334.15    | 160626        |           |
|   | US32D                  | 334.15 | 160637    | 160637        | 334.15    | 160640        |           |
|   | BLK                    |        |           |               | 305.83    | 7123          |           |



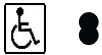
| Description   | Function                                    | Finish | 2022 List | Stock No. Fixed Cyl | 2022 List | Stock No. SFIC Hous. | Case Qty. |
|---|---|--------|-----------|---------------------|-----------|----------------------|-----------|
| <b>47KD</b>   |   |        |           |                     |           |                      |           |
| Dummy Trim  |   |        |           |                     |           |                      |           |
| Steel body and zinc lever (US32D stainless steel rose). |   |        |           |                     |           |                      |           |
| Tactile Warning - add 52.21 to list price of item.      |   |        |           |                     |           |                      |           |
| <b>Archer Lever</b>                                     | 02  | ALM    | 277.02    | 109800              | -         | -                    | 12        |
|   | Entrance by trim when device is dogged down | DBZ    | 277.02    | 109801              | -         | -                    |           |
|   |   | US3    | 305.83    | 109802              | -         | -                    |           |
|   |   | US32D  | 305.83    | 109803              | -         | -                    |           |
| <b>August Lever</b>                                     | ALM   | 277.02 | 109804    | 109804              | -         | -                    | 12        |
|   | DBZ   | 277.02 | 109805    | 109805              | -         | -                    |           |
|   | US3   | 305.83 | 109806    | 109806              | -         | -                    |           |
|   | US32D                                       | 305.83 | 109807    | 109807              | -         | -                    |           |
| <b>Withnell Lever</b>                                   | ALM   | 277.02 | 109808    | 109808              | -         | -                    | 12        |
|   | DBZ   | 277.02 | 109809    | 109809              | -         | -                    |           |
|   | US3   | 305.83 | 109810    | 109810              | -         | -                    |           |
|   | US32D                                       | 305.83 | 109811    | 109811              | -         | -                    |           |



# Exit Devices - 4700



| Description   | Function                  | Finish | 2022 List | Stock No. Fixed Cyl | 2022 List | Stock No. SFIC Hous. | Case Qty. |    |
|---|---------------------------|--------|-----------|---------------------|-----------|----------------------|-----------|----|
| <b>47KE</b>   |                           |        |           |                     |           |                      |           |    |
| Entrance  |                           |        |           |                     |           |                      |           |    |
| Fixed cylinder standard or SFIC housing option for levers (SFIC cores sold separately, refer to locks section). |                           |        |           |                     |           |                      |           |    |
| Steel body and zinc lever or knob (US32D stainless steel rose).   |                           |        |           |                     |           |                      |           |    |
| Tactile Warning - add \$52.21 to list price of item.  |                           |        |           |                     |           |                      |           |    |
| <b>Archer Lever</b>   | 08                        | ALM    | 305.83    | 169423              | 305.83    | 169422               | 12        |    |
|   | Entrance by trim          | DBZ    | 305.83    | 169430              | 305.83    | 169429               |           |    |
|   | key locks or unlocks trim | US3    | 334.15    | 169436              | 334.15    | 169435               |           |    |
|   |                           | US32D  | 334.15    | 169442              | 334.15    | 169441               |           |    |
| <b>August Lever</b>   |                           | ALM    | 305.83    | 169426              | 305.83    | 169424               | 12        |    |
|   |                           | DBZ    | 305.83    | 169432              | 305.83    | 169431               |           |    |
|   |                           | US3    | 334.15    | 169438              | 334.15    | -                    |           |    |
|   |                           | US32D  | 334.15    | 169444              | 334.15    | 169443               |           |    |
| <b>Withnell Lever</b>   |                           | ALM    | 305.83    | 169428              | 305.83    | 169427               | 12        |    |
|   |                           | DBZ    | 305.83    | 169434              | 305.83    | 169433               |           |    |
|   |                           | US3    | 334.15    | 169440              | 334.15    | 169439               |           |    |
|   |                           | US32D  | 334.15    | 169446              | 334.15    | 169445               |           |    |
| <b>Apollo Knob</b>  |                           |        | US32D     | 334.15              | 149372    | 334.15               | 169447    | 12 |
| (not ADA compliant)   |                           |        |           |                     |           |                      |           |    |



|   |                        |       |        |        |        |        |    |    |
|---|------------------------|-------|--------|--------|--------|--------|----|----|
| <b>47KN</b>   |                        |       |        |        |        |        |    |    |
| Night Latch   |                        |       |        |        |        |        |    |    |
| Fixed cylinder standard or SFIC housing option for levers (SFIC cores sold separately, refer to locks section). |                        |       |        |        |        |        |    |    |
| Steel body, zinc lever or knob (US32D stainless steel rose).  |                        |       |        |        |        |        |    |    |
| Tactile Warning - add \$52.21 to list price of item.  |                        |       |        |        |        |        |    |    |
| <b>Archer Lever</b>   | 03                     | ALM   | 305.83 | 127486 | 305.83 | 109767 | 12 |    |
|   | Key retracts latchbolt | DBZ   | 305.83 | 127489 | 305.83 | 109768 |    |    |
|   |                        | US3   | 334.15 | 127480 | 334.15 | 109769 |    |    |
|   |                        | US32D | 334.15 | 127483 | 334.15 | 109770 |    |    |
| <b>August Lever</b>   |                        | ALM   | 305.83 | 127487 | 305.83 | 109775 | 12 |    |
|   |                        | DBZ   | 305.83 | 127490 | 305.83 | 109776 |    |    |
|   |                        | US3   | 334.15 | 127481 | 334.15 | 109777 |    |    |
|   |                        | US32D | 334.15 | 127484 | 334.15 | 109778 |    |    |
| <b>Withnell Lever</b>   |                        | ALM   | 305.83 | 127488 | 305.83 | 109783 | 12 |    |
|   |                        | DBZ   | 305.83 | 127491 | 305.83 | 109784 |    |    |
|   |                        | US3   | 334.15 | 127482 | 334.15 | 109785 |    |    |
|   |                        | US32D | 334.15 | 127485 | 334.15 | 109786 |    |    |
| <b>Apollo Knob</b>  |                        |       | US32D  | 334.15 | 149373 | 334.15 | -  | 12 |
| (not ADA compliant)   |                        |       |        |        |        |        |    |    |





| Description  | Function        | Finish | 2022 List     | Stock No. Fixed Cyl | 2022 List | Stock No. SFIC Hous. | Case Qty. |
|--|-----------------|--------|---------------|---------------------|-----------|----------------------|-----------|
| <b>47KP</b><br>Passage<br>Steel body, zinc lever (US32D stainless steel rose).<br>Tactile Warning - add \$52.21 to list price of item. |                 |        |               |                     |           |                      |           |
| <b>Archer Lever</b>  | 14              | ALM    | 277.02        | 109788              | -         | -                    | 12        |
|  | Always operable | DBZ    | 277.02        | 109789              | -         | -                    |           |
|  |                 | US3    | 305.83        | 109790              | -         | -                    |           |
|  |                 | US32D  | 305.83        | 109791              | -         | -                    |           |
| <b>August Lever</b>  | ALM             |        | 277.02        | 109792              | -         | -                    | 12        |
|  | DBZ             |        | 277.02        | 109793              | -         | -                    |           |
|  | US3             |        | 305.83        | 109794              | -         | -                    |           |
|  | US32D           |        | 305.83        | 109795              | -         | -                    |           |
| <b>Withnell Lever</b>  | ALM             |        | <b>277.02</b> | 109796              | -         | -                    | 12        |
|  | DBZ             |        | 277.02        | 109797              | -         | -                    |           |
|  | US3             |        | 305.83        | 109798              | -         | -                    |           |
|  | US32D           |        | 305.83        | 109799              | -         | -                    |           |

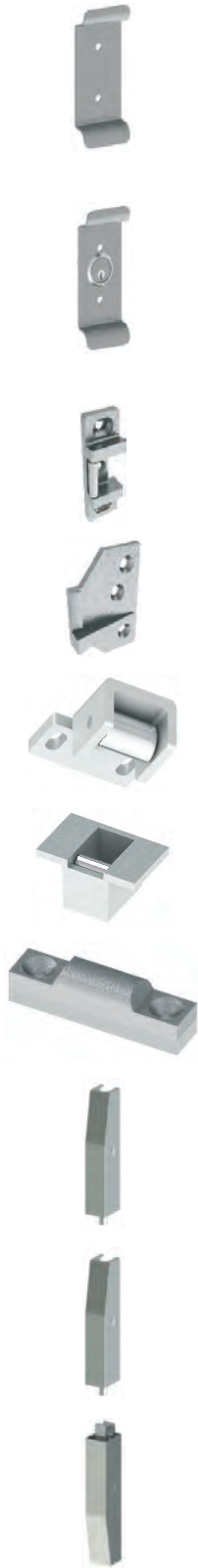


| Description  | Function                               | Finish | 2022 List | Stock No. | 2022 List | Stock No. | Case Qty. |
|--|--|--------|-----------|-----------|-----------|-----------|-----------|
| <b>47BT</b><br>Pull Plate<br>Thumb Piece Passage<br>Must specify handing<br>Tactile Warning - add \$52.21 to list price of item.   | 14<br>Always Operable                  | US32D  | 337.47    | 168977    | 337.47    | 168976    | 6         |
| <b>47PT</b><br>Pull Plate<br>Thumb Piece Entrance<br>Must specify handing<br>Tactile Warning - add \$52.21 to list price of item.  | 05<br>Key locks or unlocks thumb piece | US32D  | 337.47    | 159296    | 337.47    | 159297    | 6         |
| <b>47PD</b><br>Pull Plate - Dummy Trim<br>Plated steel for ALM, DBZ, and US3.<br>Stainless steel for US32D.<br>Tactile Warning - add \$52.21 to list price of item.  | 02                                     | ALM    | 137.83    | 109019    |           |           | 12        |
|  | Pull when device is dogged down        | DBZ    | 137.83    | 109020    |           |           |           |
|  |  | US3    | 137.83    | 109021    |           |           |           |
|  |  | US32D  | 137.83    | 109022    |           |           |           |
| <b>47PN</b><br>Pull Plate - Night Latch<br>Requires a 3901 rim cylinder (sold separately).<br>Includes retaining cup for 161 door prep.<br>Plated steel for ALM, DBZ, and US3.<br>Stainless steel for US32D.<br>Tactile Warning - add \$52.21 to list price of item. | 03                                     | ALM    | 157.63    | 109023    |           |           | 12        |
|  | Key retracts latchbolt                 | DBZ    | 158.70    | 109026    |           |           |           |
|  |  | US3    | 158.70    | 109027    |           |           |           |
|  |  | US32D  | 158.71    | 109028    |           |           |           |

1.U/M is each unless otherwise noted.



## Exit Devices - 4700



| Description  | Function                        | Finish | 2022 List | Stock No. | Case Qty. |
|--|---------------------------------|--------|-----------|-----------|-----------|
| <b>47RD</b><br>Raised Lip Pull - Dummy Trim<br>Plated steel for ALM, DBZ, and US3.<br>Stainless steel for US32D.<br>Tactile Warning - add \$52.21 to list price of item. | 02                              | ALM    | 76.70     | 18956     | 12        |
|  | Pull when device is dogged down | DBZ    | 76.70     | 18949     |           |
|  |                                 | US3    | 76.70     | 18934     |           |
|  |                                 | US32D  | 76.70     | 18933     |           |
|  |                                 |        |           |           |           |
| <b>47RN</b><br>Raised Lip Pull - Night Latch<br>Requires a 3901 rim cylinder (sold separately).<br>Tactile Warning - add \$52.21 to list price of item.                  | 03                              | ALM    | 85.45     | 177051    | 12        |
|  | Key retracts latchbolt          | DBZ    | 85.45     | 177053    |           |
|  |                                 | US3    | 85.45     | 018885    |           |
|  |                                 | US32D  | 85.45     | 177050    |           |
| <b>4910</b><br>Strike for use with 4700 Rim Exit Device<br>Included standard with device.  |                                 | US32D  | 85.45     | 20040     | 24        |
|  |                                 |        |           |           |           |
| <b>4911</b><br>Double door strike for 4700 Surface Vertical Rod and Rim Exit Device. Not for fire-rated door.<br>Optional - order separately.                            |                                 | DBZ    | 76.70     | 19301     | 24        |
|  |                                 | US3    | 76.70     | 19323     |           |
|  |                                 | US32D  | 76.70     | 19322     |           |
| <b>4913</b><br>Top strike for 4700 Surface Vertical Rod Exit Device<br>Included standard with device.  |                                 | US32D  | 54.48     | 16231     | 24        |
|  |                                 |        |           |           |           |
| <b>4914</b><br>Bottom strike for 4700 Surface Vertical Rod Device<br>Included standard with device.  |                                 | US32D  | 54.48     | 16213     | 24        |
|  |                                 |        |           |           |           |
| <b>4915</b><br>Threshold strike for use with 4500 Series or 4700 Series. Not for fire-rated doors.<br>Optional order separately.   |                                 | US32D  | 31.64     | 67426     | 48        |
|  |                                 |        |           |           |           |
| <b>4917</b><br>Bottom Latch Assembly Includes latch, cover and screws. Included standard with panic-rated device.  |                                 | ALM    | 80.03     | 56412     | 50        |
|  |                                 | DBZ    | 80.03     | 56401     |           |
|  |                                 | US3    | 80.03     | 56400     |           |
|  |                                 | US32D  | 80.03     | 56398     |           |
| <b>4917F</b><br>Bottom Latch Assembly Includes latch, cover and screws.<br>Included standard with fire-rated device.   |                                 | ALM    | 80.03     | 179943    | 50        |
|  |                                 | DBZ    | 80.03     | 179944    |           |
|  |                                 | US3    | 80.03     | 179941    |           |
|  |                                 | US32D  | 80.03     | 179942    |           |
| <b>4918</b><br>Top Latch Assembly<br>Includes latch, cover and screws.<br>Included standard with device.   |                                 | ALM    | 80.03     | 56418     | 50        |
|  |                                 | DBZ    | 80.03     | 56410     |           |
|  |                                 | US3    | 80.03     | 56409     |           |
|  |                                 | US32D  | 80.03     | 56407     |           |





| Description  | Length | Finish | 2022 List | Stock No. | Case Qty. |
|--|--------|--------|-----------|-----------|-----------|
| <b>4919</b><br>Rod Replacement Kit (top or bottom)<br>Includes rod (47-1/4"), rod guide, rod connector<br>assembly and all appropriate screws.   |        | ALM    | 40.38     | 73587     | 24        |
|  |        | DBZ    | 40.38     | 73574     |           |
|  |        | US3    | 40.38     | 73568     |           |
|  |        | US32D  | 40.38     | 73530     |           |
| <b>4931R</b><br>Shim Kit for 4700 Series Rim Device<br>Packaged 2 ea. 1/8" shims.<br>If using with 47BE, 47CE, 47NL trim, please specify<br>thickness (door plus shim).                  |        | ALM    | 69.99     | 101773    | 24        |
|  |        | DBZ    | 69.99     | 101774    |           |
|  |        | US3    | 80.03     | 101775    |           |
|  |        | US32D  | 80.03     | 101776    |           |
| <b>4931S</b><br>Shim Kit for 4700 Series Surface Vertical Rod Device<br>Packaged 2 ea. 1/8" shims.<br>If using with 47BE, 47CE, 47NL trim, please specify<br>thickness (door plus shim). |        | ALM    | 69.99     | 101783    | 24        |
|  |        | DBZ    | 69.99     | 101784    |           |
|  |        | US3    | 80.03     | 101786    |           |
|  |        | US32D  | 80.03     | 101787    |           |
| <b>4933R</b><br>Replacement Head Cover for 4700 Series Rim Device  |        | ALM    | 50.42     | 105050    | 20        |
|  |        | DBZ    | 50.42     | 105051    |           |
|  |        | US3    | 58.54     | 105052    |           |
|  |        | US32D  | 58.54     | 105053    |           |
| <b>4933S</b><br>Replacement Head Cover for 4700 Series SVR Device  |        | ALM    | 50.42     | 105054    | 20        |
|  |        | DBZ    | 50.42     | 105055    |           |
|  |        | US3    | 58.54     | 105056    |           |
|  |        | US32D  | 58.54     | 105057    |           |
| <b>4934</b><br>Replacement Dogging Plate for 4700<br>Series Panic Rated Device   | 36"    | ALM    | 40.38     | 105058    | 20        |
|  |        | DBZ    | 40.38     | 105059    |           |
|  |        | US3    | 40.38     | 105060    |           |
|  |        | US32D  | 40.38     | 105061    |           |
|  | 48"    | ALM    | 45.74     | 105062    | 20        |
|  |        | DBZ    | 45.74     | 105063    |           |
|  |        | US3    | 45.74     | 105064    |           |
|  |        | US32D  | 45.74     | 105065    |           |
| <b>4934F</b><br>Replacement Dogging Plate for 4700<br>Series Fire Rated Device   | 36"    | ALM    | 40.38     | 105066    | 20        |
|  |        | DBZ    | 40.38     | 105076    |           |
|  |        | US3    | 40.38     | 105068    |           |
|  |        | US32D  | 40.38     | 105069    |           |
|  | 48"    | ALM    | 45.74     | 105070    | 20        |
|  |        | DBZ    | 45.74     | 105071    |           |
|  |        | US3    | 45.74     | 105072    |           |
|  |        | US32D  | 45.74     | 105073    |           |
| <b>4936</b><br>24" Extension Rod Kit<br>Includes 24" extension rod, rod connector, rod guide,<br>and wood and machine screws.<br>Fire rated up to 8' on Surface Vertical Rod device.     |        | ALM    | 35.64     | 129379    | 24        |
|  |        | DBZ    | 35.64     | 129380    |           |
|  |        | US3    | 37.00     | 129372    |           |
|  |        | US32D  | 37.00     | 129378    |           |
| <b>4937</b><br>36" Extension Rod Kit<br>Includes 36" extension rod, rod connector, rod guide,<br>and wood and machine screws.<br>Fire rated up to 8' on Surface Vertical Rod device.     |        | ALM    | 40.38     | 129388    | 24        |
|  |        | DBZ    | 40.38     | 129389    |           |
|  |        | US3    | 41.74     | 129381    |           |
|  |        | US32D  | 41.74     | 129387    |           |

1.U/M is each unless otherwise noted.



## Exit Devices - 4700



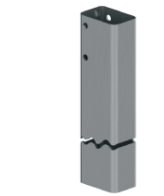
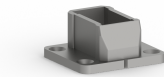
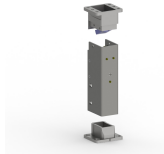
| Description  | Finish | 2022 List | Stock No. | Case Qty. |
|--|--------|-----------|-----------|-----------|
| <b>2-649-0010</b><br>Rod Guide Replacement                                   | US3    | 10.10     | 56131     |           |
| <b>2-649-0011</b><br>Rod Guide Replacement                                   | US32D  | 10.10     | 56026     |           |
| <b>2-649-0012</b><br>Rod Guide Replacement                                   | DBZ    | 10.10     | 56025     |           |
| <b>2-649-0013</b><br>Rod Guide Replacement                                   | ALM    | 10.10     | 56027     |           |
| <b>2-649-0014</b><br>Trim Handing Pin - 5 pack                               | -      | 10.10     | 52275     |           |
| <b>2-649-0021</b><br>Top Latch Cover   | ALM    | 43.71     | 56389     |           |
| <b>2-649-0022</b><br>Top Latch Cover   | DBZ    | 43.71     | 56388     |           |
| <b>2-649-0023</b><br>Top Latch Cover   | US3    | 43.71     | 56376     |           |
| <b>2-649-0024</b><br>Top Latch Cover   | US32D  | 43.71     | 56375     |           |
| <b>2-649-0025</b><br>Bottom Latch Cover                                      | ALM    | 43.71     | 56331     |           |
| <b>2-649-0026</b><br>Bottom Latch Cover                                      | DBZ    | 43.71     | 56328     |           |
| <b>2-649-0027</b><br>Bottom Latch Cover                                      | US3    | 43.71     | 56319     |           |
| <b>2-649-0028</b><br>Bottom Latch Cover                                      | US32D  | 43.71     | 56296     |           |
| <b>2-649-0095</b><br>SVR Screwpack - Latch, rod, rod connector,<br>rod guide | ALM    | 10.10     | 103572    |           |
| <b>2-649-0096</b><br>SVR Screwpack - Latch, rod, rod connector,<br>rod guide | DBZ    | 10.10     | 103573    |           |
| <b>2-649-0097</b><br>SVR Screwpack - Latch, rod, rod connector,<br>rod guide | US3    | 10.10     | 103574    |           |
| <b>2-649-0098</b><br>SVR Screwpack - Latch, rod, rod connector,<br>rod guide | US32D  | 10.10     | 103575    |           |
| <b>2-649-0099</b><br>SVR Screwpack - Top and bottom strike                   | -      | 6.09      | 103576    |           |
| <b>2-649-0100</b><br>Screwpack - Chassis, end cap, head cover, rim strike    | ALM    | 17.54     | 103577    |           |
| <b>2-649-0101</b><br>Screwpack - Chassis, end cap, head cover, rim strike    | DBZ    | 17.54     | 103578    |           |
| <b>2-649-0102</b><br>Screwpack - Chassis, end cap, head cover, rim strike    | US3    | 17.54     | 103579    |           |



| Description   | Finish | 2022 List | Stock No. | Case Qty. |
|---|--------|-----------|-----------|-----------|
| <b>2-649-0103</b><br>Screwpack - Chassis, end cap, head cover, rim strike | US32D  | 17.54     | 103580    |           |
| <b>2-649-0141</b><br>Screwpack - 2" thick door, trim                      | -      | 3.39      | 103606    |           |
| <b>2-649-0142</b><br>Screwpack - 2-1/4" thick door, trim                  | -      | 3.39      | 103607    |           |
| <b>2-649-0144</b><br>End Cap Replacement Pack                             | ALM    | 21.61     | 104043    |           |
| <b>2-649-0145</b><br>End Cap Replacement Pack                             | DBZ    | 21.61     | 104044    |           |
| <b>2-649-0146</b><br>End Cap Replacement Pack                             | US3    | 21.61     | 104045    |           |
| <b>2-649-0147</b><br>End Cap Replacement Pack                             | US32D  | 21.61     | 104046    |           |
| Note: All end caps come with bracket and fasteners                        |        |           |           |           |
| <b>2-649-0164</b><br>Pack of 8 Screws, trim (4700), 1/4 - 20 x 3/4" PHMS  | -      | 10.10     | 112534    |           |
| <b>2-649-0177</b><br>Rod to Rod Connector                                 | US3    | 10.10     | 129398    |           |
| <b>2-649-0183</b><br>Rod to Rod Connector                                 | US32D  | 10.10     | 129404    |           |
| <b>2-649-0184</b><br>Rod to Rod Connector                                 | ALM    | 10.10     | 129405    |           |
| <b>2-649-0185</b><br>Rod to Rod Connector                                 | DBZ    | 10.10     | -         |           |
| <b>2-649-0406</b><br>45PN/47PN Cylinder Cup Spacer                        | -      | 10.83     | 182414    |           |
| <b>2-649-4703</b><br>Hex Key for Dogging 3/16"<br>10 pack                 | -      | 7.45      | 315       |           |



# Exit Devices - 4900



| Description   | Height | Finish | 2022 List | Stock No. | List Fire Rated | Stock No. | Case Qty |
|---|--------|--------|-----------|-----------|-----------------|-----------|----------|
| <b>4900U</b><br>Non-Keyed Removable Mullion Set<br>11 Gauge Steel Tube, top bracket/<br>bottom bracket set<br>Fire rated mullion requires a fire rated<br>strike (sold separately). | 7'     | USP    | 635.85    | 133007    | 951.04          | 133010    | 1        |
|   | 8'     | USP    | 635.85    | 133008    | 951.04          | 133011    | 1        |
|   | 10'    | USP    | 793.14    | 133009    |                 | -         | 1        |
| <b>4904</b><br>Top/Bottom Bracket Set<br>Removable (Non-Keyed)  |        | -      | 278.93    | 133029    | 342.83          | 133031    | 5        |
| <b>2-649-0600</b><br>NKR/KR Removable Mullion<br>Bottom Bracket   |        | -      | 70.03     | 17728     |                 |           |          |
| <b>4905</b><br>Mullion Tube (Keyed and<br>Non-Keyed) 11 Gauge<br>Steel  | 7'     | USP    | 408.08    | 133032    |                 | -         | 1        |
|   | 8'     | USP    | 408.08    | 133033    |                 | -         | 1        |
|   | 10'    | USP    | 505.53    | 133034    |                 | -         | 1        |
| <b>4912</b><br>Fire rated strike for use with 4500 Series and 4600<br>Series Fire Rated Exit Device and Mullion   |        | US32D  |           | -         | 199.23          | 16232     | 24       |
| <b>4916</b><br>Fire rated strike for use with 4700 Series Fire Rated Exit<br>Device and Mullion   |        | US32D  |           | -         | 174.77          | 115780    | 24       |
| <b>4953</b><br>Mullion Stabilizer for use with 4900 Series Non-Keyed<br>and Keyed Removable Mullion   |        | US32D  |           | -         | 68.64           | 139749    | 12       |





| Description   | Height | Finish | 2022 List | Stock No. | List Fire Rated | Stock No. Stock No. | Case Qty |
|---|--------|--------|-----------|-----------|-----------------|---------------------|----------|
| <b>4900X</b><br>Keyed Removable Mullion Set<br>11 gauge steel tube, top bracket/<br>bottom bracket set.   | 7'     | USP    | 1,311.35  | 034158    | 1,551.99        | 034154              | 1        |
|   | 8'     | USP    | 1,311.35  | 034164    | 1,551.99        | 034155              | 1        |
|   | 10'    | USP    | 1,511.67  | 034157    |                 | -                   | 1        |
| Requires a 3901 rim cylinder (sold separately).   |        |        |           |           |                 |                     |          |
| Fire rated mullion requires a fire rated strike (sold separately).  |        |        |           |           |                 |                     |          |
| <b>4903</b><br>Top/Bottom Bracket Set<br>Key Removable  |        | -      | 805.94    | 034143    | 988.13          | 034144              | 5        |
| Requires a 3901 rim cylinder (sold separately).   |        |        |           |           |                 |                     |          |
| <b>4912</b><br>Fire rated strike for use with 4500 Series and 4600 Series Fire Rated Device and Mullion   |        | US32D  |           | -         | 199.23          | 16232               | 24       |
| <b>4916</b><br>Fire rated strike for use with 4700 Series Fire Rated Exit Device and Mullion  |        | US32D  |           | -         | 174.77          | 115780              | 24       |
| <b>4953</b><br>Mullion Stabilizer for use with 4900 Series Non-Keyed and Keyed Removable Mullion  |        | US32D  |           | -         | 68.64           | 139749              | 12       |
| <b>3901</b><br>Rim Cylinder<br>Fixed cylinder and Small Format Interchangeable Core housing available (SFIC cores sold separately). Dummy rim cylinders also available. |        | US3    | 62.10     |           |                 |                     | 1        |
|   |        | US4    | 65.96     |           |                 |                     |          |
|   |        | US10B  | 62.10     |           |                 |                     |          |
|   |        | US26   | 62.10     |           |                 |                     |          |
|   |        | US26D  | 62.10     |           |                 |                     |          |
| Shipped standard with long break-off tailpiece.   |        |        |           |           |                 |                     |          |
| Specify 6-pin or 7-pin for SFIC housing.  |        |        |           |           |                 |                     |          |
| For additional cylinder information, please refer to the Locks section.   |        |        |           |           |                 |                     |          |



1.U/M is each unless otherwise noted.



# Exit Devices - 4700



| Description   | Finish | 2022 List | Stock No. | Case Qty. |
|---|--------|-----------|-----------|-----------|
| <b>3902</b><br>Mortise Cylinder<br>Fixed cylinder and Small Format Interchangeable Core housing available (SFIC cores sold separately). Dummy mortise cylinders also available. | US3    | 62.10     |           | 1         |
|   | US4    | 65.95     |           |           |
|   | US10B  | 62.10     |           |           |
|   | US26   | 62.10     |           |           |
|   | US26D  | 62.10     |           |           |
| Shipped with Schlage C keyway, standard cam attached, and Adams Rite cam loose in box.  |        |           |           |           |
| Specify length 1-1/8" or 1-1/4" for fixed cylinder or 1-1/4" (6-pin) or 1-3/8" (7-pin) for SFIC housing and cam required.   |        |           |           |           |
| For mortise exit device trim specify 1-5/8" with standard cam for fixed cylinder (Schlage C Keyway) or SFIC housing.  |        |           |           |           |
| For mortise exit device x cylinder/optional pull, use 1-3/8" cylinder with 11/16" cylindrical collar.   |        |           |           |           |
| For additional cylinder information, please refer to the Locks section.   |        |           |           |           |
| <b>2-649-0137</b><br>Retaining Cup<br>For use with Rim cylinder and 161 prep  | NF     | 12.13     | 103365    |           |
| <b>2-649-0045</b><br>7/16" Cylinder Collar (4500 Pull Plate Trim)   | US3    | 23.52     | 3404      |           |
| <b>2-649-0046</b><br>7/16" Cylinder Collar (4500 Pull Plate Trim)   | US4    | 23.52     | 3395      |           |
| <b>2-649-0048</b><br>7/16" Cylinder Collar (4500 Pull Plate Trim)   | US10B  | 23.52     | 3393      |           |
| <b>2-649-0050</b><br>7/16" Cylinder Collar (4500 Pull Plate Trim)   | US26   | 23.52     | 3386      |           |
| <b>2-649-0051</b><br>7/16" Cylinder Collar (4500 Pull Plate Trim)   | US26D  | 23.52     | 3384      |           |
| <b>2-649-0052</b><br>7/16" Cylinder Collar (4500 Pull Plate Trim)   | US32D  | 23.52     | 3381      |           |
| Note: For use with 1-1/8" mortise cylinders<br>Note: All cylinder collars come with wave washer and spacer  |        |           |           |           |
| <b>2-649-0053</b><br>11/16" Cylinder Collar (4500 Escutcheon Trim)  | US3    | 23.52     | 3380      |           |
| <b>2-649-0054</b><br>11/16" Cylinder Collar (4500 Escutcheon Trim)  | US4    | 23.52     | 3357      |           |
| <b>2-649-0056</b><br>11/16" Cylinder Collar (4500 Escutcheon Trim)  | US10B  | 23.52     | 3340      |           |
| <b>2-649-0057</b><br>11/16" Cylinder Collar (4500 Escutcheon Trim)  | US26   | 23.52     | 3339      |           |





| Description  | Finish | 2022 List | Stock No. | Case Qty. |
|--|--------|-----------|-----------|-----------|
| <b>2-649-0058</b><br>1 1/16" Cylinder Collar (4500 Escutcheon Trim)  | US26D  | 23.52     | 3335      |           |
| <b>2-649-0059</b><br>1 1/16" Cylinder Collar (4500 Escutcheon Trim)  | US32D  | 23.52     | 3334      |           |
| Note: For use with 1-1/4" or 1-3/8" mortise cylinders<br>Note: All cylinder collars come with wave washer and spacer |        |           |           |           |
| <b>2-647-0012</b><br>7/8" Cylinder Collar - 5, 6, 7 pin<br>(4700 Escutcheon Trim)                                    | US3    | 23.52     | 31809     |           |
| <b>2-647-0013</b><br>7/8" Cylinder Collar - 5, 6, 7 pin<br>(4700 Escutcheon Trim)                                    | ALM    | 23.52     | 31804     |           |
| <b>2-647-0014</b><br>7/8" Cylinder Collar - 5, 6, 7 pin<br>(4700 Escutcheon Trim)                                    | DBZ    | 23.52     | 31793     |           |
| <b>2-647-0015</b><br>7/8" Cylinder Collar - 5, 6, 7 pin<br>(4700 Escutcheon Trim)                                    | US32D  | 23.52     | 31789     |           |
| Note: For use with 1-1/8" mortise cylinders<br>Note: All cylinder collars come with wave washer and spacer           |        |           |           |           |