

TABLE OF CONTENTS

B

Barn Door Hardware

9400 Series Barn Door Packaged Sets.....	15
Barn Door Privacy Lock.....	18
eConestoga Series Barn Door Hardware.....	17

Bi-Fold Door Hardware

9570RC Packaged Sets.....	9
---------------------------	---

By-Pass Door Hardware

9611CS Packaged Sets.....	7
9613RS Packaged Sets.....	5
9614RS Packaged Sets.....	6

C

Components for 9400 Series Barn Door Hardware...	16
Components for Sliding Door Hardware	13

D

Door Selection Chart.....	3
---------------------------	---

H

How to Order.....	2
-------------------	---

P

Pocket Door Hardware

9628CS 9629CS 9630CS 9631CS Framed Kits	11
9850HD Framed Kits	12
9878CS & HD Packaged Sets	10

W

Wall Mount 9710HD Series	14
--------------------------------	----



Sliding Door Hardware

GENERAL INFORMATION

Cancellation Notification

Cancellation for made-to-order items must be communicated within 48 hours of order placement.

HOW TO ORDER:

EXAMPLE: 9710HD Wall Mount Packaged Set For 1 Door CLA 72"

STOCK NUMBER: 160958

PLEASE READ

In our effort to streamline our SDH offering and make it easier to do business with Hager, we have enhanced quality and performance and significantly reduced leads times. As part of this new consolidated line, and for your convenience, we have created a quick cross-reference guide to highlight the changes.

IMPORTANT: The components between new and previous versions (Consolidated Series) are **NON-INTERCHANGEABLE**

	CONSOLIDATED SERIES	NEW PART NUMBER
BI-FOLD SET	9570, 9860, 9861, 9890, 9891	9570RC
BY-PASS SET	9675, 9676, 9611, 9110	9611CS
	9673, 9674	9611CS (Add optional 9622 fascia) ¹
	9885	9611HD (Add optional 9622 fascia) ²
	9130, 9612, 9875	9611HD
	9514, 9583	9613RS
	9614, 9683	9614RS
WALL MOUNT SET	9710	9710HD
POCKET DOOR SETS	9678, 9110	9878CS
	9878, 9130, 9901	9878HD

Note 1: The 9611CS (150 LBS.) Bypass Set with the optional 9622 Fascia becomes the equivalent to previous version 9673 and 9674. The components between new and previous versions are non-interchangeable.

Note 2: The 9611HD (250 LBS.) Bypass Set with the optional 9622 Fascia becomes the equivalent to previous version 9885. The components between new and previous versions are non-interchangeable.

Maximum Weight Per Door	Packaged Sets	Description	Parts Bags	Track
By-Pass				
60#	9613RS-48	9613 BY-PASS RS 48" (1219 mm) MIL (non-fascia) - By-pass set for two 24" doors	9625	9623
60#	9613RS-60	9613 BY-PASS RS 60 (1524 mm) MIL (non-fascia)- By-pass set for two 30" doors	9625	9623
60#	9613RS-72	9613 BY-PASS RS 72" (1829 mm)MIL (non-fascia)- By-pass set for two 36" doors	9625	9623
60#	9613RS-96	9613 BY-PASS RS 96" (2438 mm)MIL (non-fascia) - By-pass set for two 48" doors	9625	9623
60#	9614RS-48	9614 BY-PASS RS 48" (1219 mm) MIL (fascia) - By-pass set for two 24" doors	9625	9624
60#	9614RS-60	9614 BY-PASS RS 60 (1524 mm) MIL (fascia)- By-pass set for two 30" doors	9625	9624
60#	9614RS-72	9614 BY-PASS RS 72" (1829 mm)MIL (fascia)- By-pass set for two 36" doors	9625	9624
60#	9614RS-96	9614 BY-PASS RS 96" (2438 mm)MIL (fascia) - By-pass set for two 48" doors	9625	9624
150#	9611CS-48	9611 BY-PASS CS 48" (1219 mm) MIL, 150 lbs. per door, Door thickness from 1-3/8" or 1-3/4" - By-pass set for two 24" doors	9621-LS	9303HD
150#	9611CS-60	9611 BY-PASS CS 60" (1524 mm) MIL, 150 lbs. per door, Door thickness from 1-3/8" or 1-3/4" - By-pass set for two 30" doors	9621-LS	9303HD
150#	9611CS-72	9611 BY-PASS CS 72" (1829 mm) MIL, 150 lbs. per door, Door thickness from 1-3/8" or 1-3/4" - By-pass set for two 36" doors	9621-LS	9303HD
150#	9611CS-96	9611 BY-PASS CS 96" (2438 mm) MIL, 150 lbs. per door, Door thickness from 1-3/8" or 1-3/4"- By-pass set for two 48" doors	9621-LS	9303HD
250#	9611HD-48	9611 BY-PASS HD 48" (1219 mm) MIL, 250 lbs. per door, Door thickness from 1-3/8" or 1-3/4"- By-pass set for two 24" doors	9621-HD	9303HD
250#	9611HD-60	9611 BY-PASS HD 60" (1524 mm) MIL, 250 lbs. per door, Door thickness from 1-3/8" or 1-3/4"- By-pass set for two 30" doors	9621-HD	9303HD
250#	9611HD-72	9611 BY-PASS HD 72" (1829 mm)MIL, 250 lbs. per door, Door thickness from 1-3/8" or 1-3/4", - By-pass set for two 36" doors	9621-HD	9303HD
250#	9611HD-96	9611 BY-PASS HD 96" (2438 mm) MIL, 250 lbs. per door, Door thickness from 1-3/8" or 1-3/4", - By-pass set for two 48" doors	9621-HD	9303HD
Bi-Fold Sets				
125#	9570RC-36	9570 BI-FOLD RC 36" (914 mm) MIL - Bi-fold set for two 18" doors	9805	9303HD
125#	9570RC-48	9570 BI-FOLD RC 48" (1219 mm) MIL 4PNL - Bi-fold set for four 12" doors	9805	9303HD
125#	9570RC-60	9570 BI-FOLD RC 60" (1524 mm) MIL 4PNL - Bi-fold set for four 15" doors	9805	9303HD
125#	9570RC-72	9570 BI-FOLD RC 72" (1829 mm)MIL 4PNL - Bi-fold set for four 18" doors	9805	9303HD
125#	9570RC-96	9570 BI-FOLD RC 96" (2438 mm) MIL 4PNL - Bi-fold set for four 24" doors	9805	9803HD
250#	9852HD-84	9852HD, 84", 250 lbs, 2x6, Heavy Duty Pocket Door Kit	9606	9303HD



Sliding Door Hardware

Maximum Weight Per Door	Packaged Sets	Description	Parts Bags	Track
Pocket Door Sets (Framing Not Included)				
150#	9878CS-72	Aluminum box track & hardware for 1-3/8" & 1-3/4" thick doors - 72" (1829 mm)	9805	9303HD
150#	9878CS-96	Aluminum box track & hardware for 1-3/8" & 1-3/4" thick doors- 96" (2438 mm)	9805	9303HD
250#	9878HD-72	Heavy duty Aluminum box track & hardware for 1-3/8" thick doors and up- 72" (1829 mm)	9806	9303HD
250#	9878HD-96	Heavy duty Aluminum box track & hardware for 1-3/8" thick doors and up- 96" (2438 mm)	9806	9303HD
Pocket Door Framed Kits				
150#	9628CS	9628CS, 108", 150 lbs, Commercial Pocket Door Kit	9605	9303HD
150#	9629CS	9629CS, 96", 150 lbs, Commercial Pocket Door Kit	9605	9303HD
150#	9630CS	9630CS, 84", 150 lbs, Commercial Pocket Door Kit	9605	9303HD
150#	9631CS	9631CS, 80", 150 lbs, Commercial Pocket Door Kit	9605	9303HD
250#	9850HD-96	9850HD, 96", 250 lbs, Heavy Duty Pocket Door Kit	9606	9303HD
250#	9850-102	9850HD, 102", 250 LB, 2x4, HEAVY DUTY POCKET KIT	9606	9303HD
250#	9852HD-80	9852HD, 80", 250 LB, 2X6, HEAVY DUTY POCKET KIT	9606	9303HD
250#	9852HD-84	9852HD, 84", 250 lbs, 2x6, Heavy Duty Pocket Door Kit	9606	9303HD
Wall Mount Sets				
250#	9710HD-72	9710 WL MNT HD 72" Clear	9806	9703HD
250#	9710HD-96	9710 WL MNT HD 96" Clear	9806	9703HD
250#	9710HD-144	9710 WL MNT HD 144" Clear	9806	9703HD
250#	9710HD-72	9710 WL MNT HD 72" Black	9806	9703HD
250#	9710HD-96	9710 WL MNT HD 96" Black	9806	9703HD
250#	9710HD-144	9710 WL MNT HD 144" Black	9806	9703HD
9400 Series Barn Door				
250#	9432-78	9432 TOP MOUNT STICK 2m (78-3/4") SS ROUND RAIL	1-269-8672	N/A
250#	9432-96	9432 TOP MOUNT STICK 2m (96-3/4") SS ROUND RAIL	1-269-8672	N/A
250#	9436-78	9436 FACE MNT STRAP STICK 2m (78-3/4") SS RD RAIL	1-269-8672	N/A
250#	9436-96	9436 FACE MNT STRAP STICK 2m (96-3/4") SS RD RAIL	1-269-8672	N/A
e-Conestoga Barn Door				
250#	9456-72	9456 Flat Track Steel Black Top Mnt 72" Track Kit	1-269-8652	1-269-8658
250#	9456-96	9456 Flat Track Steel Black Top Mnt 96" Track Kit	1-269-8652	1-269-8660
250#	9457-72	9457 Flat Track Steel Black Face Mnt 72" Track Kit	1-269-8659	1-269-8658
250#	9457-96	9457 Flat Track Steel Black Face Mnt 96" Track Kit	1-269-8659	1-269-8660

Sliding Door Hardware - 9613RS (Non-Fascia) Packaged Sets - By-Pass



Description	2024 List
-------------	-----------

9613RS Packaged Sets for doors up to 60 lbs (27.2 kg) per door.

System Includes: Aluminum track, (4) 1-wheel hangers, (2) Flush cup pulls, (1) Floor channel door guide, Parts bag

Product Information: Door weight up to 60 lbs. per door with single wheel hanger, Door thickness 1-3/8", Track is extruded aluminum with "V" shaped rails, grooved fascia, Optional soft-close (1-269-8651) for doors up to 150 lbs.

Note: 9613RS replaces 9514 & 9583 - The components between new and previous versions are NON-INTERCHANGEABLE

9613RS-48	9613 BY-PASS RS 48" (1219 mm) MIL (non-fascia) - By-pass set for two 24" doors	30.96
9613RS-60	9613 BY-PASS RS 60 (1524 mm) MIL (non-fascia)- By-pass set for two 30" doors	36.36
9613RS-72	9613 BY-PASS RS 72" (1829 mm)MIL (non-fascia)- By-pass set for two 36" doors	62.70
9613RS-96*	9613 BY-PASS RS 96" (2438 mm)MIL (non-fascia) - By-pass set for two 48" doors	53.88

9613RS (Non-Fascia) Replacement Components

PART NUMBER	DESCRIPTION	2024 List
9623-96	Replacement track for 9613RS (Non-Fascia)	23.77
9625	Replacement 2-dr Parts Bag for 9613RS and 9614RS, Includes: (4 each 1/2" offset single hangers, adjustable floor guide and 2 each SN 2-1/8" pulls and all required hardware)	47.89

*Note: Expandable to additional doors (i.e. 3-4 door configuration) The purchase of Parts Bag 9625 is required for each door.



Sliding Door Hardware - 9614RS (Fascia Included) Packaged Sets - By-Pass



Description	List
-------------	------

9614RS Packaged Sets for doors up to 60 lbs (27.2 kg) per door.

System Includes: Aluminum track, (4) 1-wheel hangers, (2) Flush cup pulls, (1) Floor channel door guide, Parts bag

Product Information: Door weight up to 60 lbs. per door with single wheel hanger, Door thickness 1-3/8", Track is extruded aluminum with "V" shaped rails, Optional soft-close (1-269-8651) for doors up to 150 lbs.

Note: 9614RS replaces 9614 & 9683 - The components between new and previous versions are NON-INTERCHANGEABLE

9614RS-48	9614 BY-PASS RS 48" (1219 mm) MIL (fascia) - By-pass set for two 24" doors	63.92
9614RS-60	9614 BY-PASS RS 60 (1524 mm) MIL (fascia)- By-pass set for two 30" doors	74.20
9614RS-72	9614 BY-PASS RS 72" (1829 mm)MIL (fascia)- By-pass set for two 36" doors	84.56
9614RS-96*	9614 BY-PASS RS 96" (2438 mm)MIL (fascia) - By-pass set for two 48" doors	110.58

9614RS (Fascia) Replacement Components

PART NUMBER	DESCRIPTION	List
9624-96	Replacement track for 9614RS (Fascia)	60.96
9625	Replacement 2-dr Parts Bag for 9613RS and 9614RS, Includes: (4 each 1/2" offset single hangers, adjustable floor guide and 2 each SN 2-1/8" pulls and all required hardware)	13.00

*Note: Expandable to additional doors (i.e. 3-4 door configuration) The purchase of Parts Bag 9625 is required for each door.



Sliding Door Hardware - 9611CS & 9611HD Packaged Sets - By-Pass



Description		List
9611CS Packaged Sets for doors up to 150 lbs (68 kg) per door.		
9611HD Packaged Sets for doors up to 250 lbs (113 kg) per door.		
9611CS System Includes: (2) 9303HD Aluminum track -see <i>SDH components section</i> , (4) 9805-see components section- 1-wheel hangers, (2) Flush cup pulls, (1) Floor channel door guide, Parts bag		
9611HD System Includes: (2) 9303HD Aluminum track - see <i>SDH components section</i> , (4) 9806 BB- 1-wheel hangers - see <i>SDH components section</i> , (2) Flush cup pulls, (1) Floor channel door guide, Parts bag		
Product Information: 9611CS Door weight up to 150 lbs. per door, 9611HD Door weight up to 250 lbs. per door with single wheel hanger, Door thickness 1-3/8" or 1-3/4", Quick-release hangers allow for easy door hanging and removal, Optional soft-close (1-269-8651) for doors up to 150 lbs		
Note: 9611CS replaces 9675, 9676, 9611, 9110 - The components between new and previous versions are NON-INTERCHANGEABLE		
Note: 9611HD replaces - 9130, 9612, 9875 The components between new and previous versions are NON-INTERCHANGEABLE		
9611CS-48	9611 BY-PASS CS 48" (1219 mm) MIL, 150 lbs. per door, Door thickness from 1-3/8" or 1-3/4" - By-pass set for two 24" doors	117.36
9611CS-60	9611 BY-PASS CS 60" (1524 mm) MIL, 150 lbs. per door, Door thickness from 1-3/8" or 1-3/4" - By-pass set for two 30" doors	128.64
9611CS-72	9611 BY-PASS CS 72" (1829 mm) MIL, 150 lbs. per door, Door thickness from 1-3/8" or 1-3/4" - By-pass set for two 36" doors	141.92
9611CS-96	9611 BY-PASS CS 96" (2438 mm) MIL, 150 lbs. per door, Door thickness from 1-3/8" or 1-3/4" - By-pass set for two 48" doors	186.20
9611CS-120	9611 BY-PASS CS 120" (3048 mm) MIL, 150 lbs. per door, Door thickness from 1-3/8" or 1-3/4" - By-pass set for two 60" doors	216.28
9611CS-144	9611 BY-PASS CS 144" (3658 mm) MIL, 150 lbs. per door, Door thickness from 1-3/8" or 1-3/4" - By-pass set for two 72" doors	239.53
9611HD-48	9611 BY-PASS HD 48" (1219 mm) MIL, 250 lbs. per door, Door thickness from 1-3/8" or 1-3/4" - By-pass set for two 24" doors	141.92
9611HD-60	9611 BY-PASS HD 60" (1524 mm) MIL, 250 lbs. per door, Door thickness from 1-3/8" or 1-3/4" - By-pass set for two 30" doors	153.24
9611HD-72	9611 BY-PASS HD 72" (1829 mm) MIL, 250 lbs. per door, Door thickness from 1-3/8" or 1-3/4" - By-pass set for two 36" doors	166.52
9611HD-96	9611 BY-PASS HD 96" (2438 mm) MIL, 250 lbs. per door, Door thickness from 1-3/8" or 1-3/4" - By-pass set for two 48" doors	191.40
9611HD-120	9611 BY-PASS HD 120" (3048 mm) MIL, 250 lbs. per door, Door thickness from 1-3/8" or 1-3/4" - By-pass set for two 60" doors	267.44
9611HD-144	9611 BY-PASS HD 144" (3658 mm) MIL, 250 lbs. per door, Door thickness from 1-3/8" or 1-3/4" - By-pass set for two 72" doors	290.70



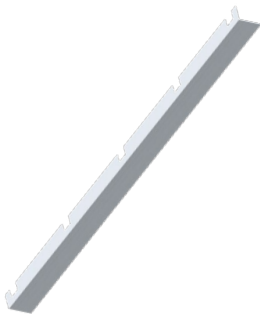
Sliding Door Hardware - 9611CS & 9611HD Packaged Sets - By-Pass continued

9611CS & 9611HD Replacement Components

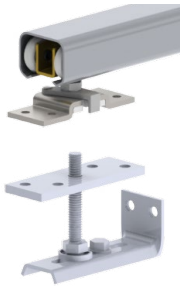
PART NUMBER	DESCRIPTION	List
9303HD-72	9303HD 72" MIL - Replacement Track	33.00
9303HD-96	9303HD 96" MIL - Replacement Track	50.00
9303HD-144	9303HD 144" MIL - Replacement Track	81.00
9621-CS	Replacement 2-dr (Parts Bag) set for 9611CS, Includes: (4-wheel hanger for 150 LB, 1-3/8 to 1-3/4" floor guide, 2 each SN 2-1/8" pulls and all required hardware)	62.87
9621-HD	Replacement 2-dr (Parts Bag) set for 9611HD, Includes: (4-wheel hanger for 250 LB, 1-3/8 to 1-3/4" floor guide, 2 each SN 2-1/8" pulls and all required hardware)	79.85

9622 Optional (2-11/16", 68.3mm) Grooved Fascia for 9611CS and 9611HD

PART NUMBER	DESCRIPTION	List
Note: The 9611CS (150 lbs.) bypass set with the optional 9622 fascia becomes the equivalent to previous version 9673 and 9674. The components between new and previous versions are NON-INTERCHANGEABLE		
Note: The 9611HD (250 lbs.) bypass set with the optional 9622 fascia becomes the equivalent to previous version 9885. The components between new and previous versions are NON-INTERCHANGEABLE		
9622-48	'L' Shaped with pre-punched mounting slots - Aluminum Fascia for 9611CS & 9611HD, 48"	49.42
9622-60	'L' Shaped with pre-punched mounting slots - Aluminum Fascia for 9611CS & 9611HD, 60"	55.00
9622-72	'L' Shaped with pre-punched mounting slots - Aluminum Fascia for 9611CS & 9611HD, 72"	58.88
9622-96	'L' Shaped with pre-punched mounting slots - Aluminum Fascia for 9611CS & 9611HD, 96"	71.72



Sliding Door Hardware - 9570RC - Bi-Fold



Description

List

9570RC Packaged Sets for doors up to 125 lbs (57 kg) per door.

System Includes: 9303HD Aluminum track see components section and 9805 hanger parts pag - see components section

Product Information: Track is extruded aluminum jump-proof style with "V" shaped rails

Note: 9570RC replaces 9570, 9860, 9861, 9890, 9891 - The components between new and previous versions are NON-INTERCHANGEABLE

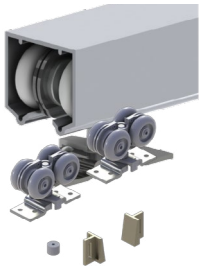
9570RC-36	9570 BI-FOLD RC 36" (914 mm) MIL - Bi-fold set for two 18" doors	70.14
9570RC-48	9570 BI-FOLD RC 48" (1219 mm) MIL 4PNL - Bi-fold set for four 12" doors	115.50
9570RC-60	9570 BI-FOLD RC 60" (1524 mm) MIL 4PNL - Bi-fold set for four 15" doors	122.43
9570RC-72	9570 BI-FOLD RC 72" (1829 mm) MIL 4PNL - Bi-fold set for four 18" doors	130.41
9570RC-96	9570 BI-FOLD RC 96" (2438 mm) MIL 4PNL - Bi-fold set for four 24" doors	144.69

9570RC Replacement Components

PART NUMBER	DESCRIPTION	2024 List
9303HD-72	9303HD 72" MIL - Replacement Track	33.00
9303HD-96	9303HD 96" MIL - Replacement Track	50.00
9303HD-144	9303HD 144" MIL - Replacement Track	81.00
9581	Pivot set includes the lead 4-wheel roller, top pivot pin and track bracket, bottom pivot bracket and pins, wood knob, one aligner and all required hardware	59.69



Sliding Door Hardware - 9878CS & 9878HD - Pocket Door Sets (Framing Not Included)



Description		List
9878CS Packaged Sets for doors up to 150 lbs (68 kg) per door.		
9878HD Packaged Sets for doors up to 250 lbs (113 kg) per door.		
9878CS System Includes: 9303HD aluminum track see components section and 9805 parts bag see components section, parts bag		
9878HD System Includes: 9303HD Aluminum track - see SDH components section, 9806 BB- 1-wheel hangers - see SDH components section, parts bag		
Product Information: Door thickness from 1-1/8" - 1-3/4, Track is extruded aluminum jump-proof style with "V" shaped rails, Meets performance requirements ANSI/BHMA A156.14 (Grade 1) for sliding doors by exceeding 100,000 cycles, Optional soft-close (1-269-8651) for doors up to 150 lbs.		
Note: 9878CS replaces 9678 / 9878HD replaces 9878 - The components between new and previous versions are NON-INTERCHANGEABLE		
9878CS-72	Pocket Door Set - 6' (1829 mm) for 3'0" (914 mm) door	81.40
9878CS-96	Pocket Door Set - 8' (2438 mm) for 4'0" (1219 mm) door	103.49
9878HD-72	Pocket Door Set - 6' (1829 mm) for 3'0" (914 mm) door	118.60
9878HD-96	Pocket Door Set - 8' (2438 mm) for 4'0" (1219 mm) door	144.20

Sliding Door Hardware - 9628CS | 9629CS | 9630CS | 9631CS - 9600 Commercial Series

Pocket Door Frame Kits



Description	List
-------------	------

9628CS Packaged Sets for doors up to 150 lbs (68 kg) per door.

9629CS Packaged Sets for doors up to 150 lbs (68 kg) per door.

9630CS Packaged Sets for doors up to 150 lbs (68 kg) per door.

9631CS Packaged Sets for doors up to 150 lbs (68 kg) per door.

System Includes: 2"x4" Header and Track Assembly (9303HD), 2 pairs of Split Studs, 2 each Floor Plates, 2, End Brackets, 2 each (9805) rollers with hanger plates, 1 each (9881CS) Bumper, and 1 pair (9883CS) Floor Guide.

For 1-3/8" (35 mm) thick doors. 9634CS (sold separately) for 1-3/4" doors.

Product Information: V-groove jump proof aluminum track, Pre-assembled header goes up quickly, Real wood split studs, size and to prevent fastener penetration into the pocket, 2 pairs of split studs with wood inserts, Optional soft-close (1-269-8651) for doors up to 150 lbs

	9628CS	9629CS	9630CS	9631CS
Max Door Weight	150 lbs. (68 KG)	150 lbs. (68 KG)	150 lbs. (68 KG)	150 lbs. (68 KG)
Door Thickness	1-1/8" - 1-3/4" (29MM-44MM)	1-1/8" - 1-3/4" (29MM-44MM)	1-1/8" - 1-3/4" (29MM-44MM)	1-1/8" - 1-3/4" (29MM-44MM)
Door Width & Height	H: 9'0" (2743MM) W: 3'0" (914MM)	H: 9'0" (2743MM) W: 3'0" (914MM)	H: 9'0" (2743MM) W: 3'0" (914MM)	H: 9'0" (2743MM) W: 3'0" (914MM)
Hanger	9805	9805	9805	9805

Note: 9628CS replaces 9628, 9629CS replaces 9629, 9630CS replaces 9630, 9631CS replaces 9631 - The components between new and previous versions are **NON-INTERCHANGEABLE**

9628CS	9628CS, 108", 150 lbs, Commercial Pocket Door Kit	317.08
9629CS	9629CS, 96", 150 lbs, Commercial Pocket Door Kit	288.90
9630CS	9630CS, 84", 150 lbs, Commercial Pocket Door Kit	283.01
9631CS	9631CS, 80", 150 lbs, Commercial Pocket Door Kit	280.84



Sliding Door Hardware - 9850HD-102 | 9850HD-96 | 9852HD-84 | 9852HD-80 - 9800

Heavy-Duty Series Pocket Door Framed Kits



Description

List

9850HD-96 Packaged Sets for doors up to 250 lbs (113 kg) per door.

9850-102 Packaged Sets for doors up to 250 lbs (113 kg) per door.

9852HD-80 Packaged Sets for doors (2 X 6) up to 250 lbs (113 kg) per door.

9852HD-84 Packaged Sets for doors (2 X 6) up to 250 lbs (113 kg) per door.

9850HD System Includes: 2"x4" Header and Track Assembly (9303HD), 3 pairs of Split Studs, 3 each Floor Plates for 1-3/8" thick doors, 3 each Floor Plates for 1-3/4" thick doors, 6 shims, 2 End Brackets, 2 each (9806) rollers with hanger plates, one each (9881CS) Bumper, and 1 pair (9883CS) Floor Guide. or 1-3/8" (35 mm) and 1-3/4" (44 mm) thick doors.

9850HD System Includes: 2"x6" Header and Track Assembly (9303HD), 2 pairs of Split Studs, 2 each 4" Floor Plates, 2 End Brackets, 2 each (9806) rollers with hanger plates, 1 each (9881CS) Bumper, and 1 pair (9883CS) Floor Guide. For 1-3/8" (35 mm) and 1-3/4" (44 mm) thick doors.

Product Information: For doors 1-1/8" - 1-3/4" thick weighing up to 250 lbs., Pre-assembled header assembly goes up quickly, Heavy-duty, V-groove jump proof aluminum track, Real wood split studs, size 3/4" x 1-3/4" width relative to length, steel encased for rigidity and to prevent fastener penetration into the pocket

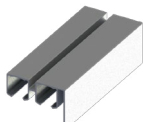
	9850HD-102		9850HD-96		9852HD-84		9852-80
Max Door Weight	250 lbs. (113 KG)		250 lbs. (113 KG)		250 lbs. (113 KG)		250 lbs. (113 KG))
Door Thickness	1-1/8" - 1-3/4" (29MM-44MM)		1-1/8" - 1-3/4" (29MM-44MM)		1-1/8" - 1-3/4" (29MM-44MM)		1-1/8" - 1-3/4" (29MM-44MM)
Door Width & Height	H: 8'6" (2591MM) W: 4'0" (1219MM)		H: 8'0" (2438MM) W: 4'0" (1219MM)		H: 7'0" (2134MM) W: 4'0" (1219MM)		H: 6'8" (2032MM) W: 4'0" (1219MM)
Hanger	9806 BB	9806 BB	9806 BB	9806 BB	9806 BB	9806 BB	9806 BB

Note: 9850HD replaces 9850 - The components between new and previous versions are NON-INTERCHANGEABLE

9850HD-96	9850HD, 96", 250 lbs, Heavy Duty Pocket Door Kit	357.05
9850-102	9850HD, 102", 250 LB, 2x4, HEAVY DUTY POCKET KIT	382.10
9852HD-80	9852HD, 80", 250 LB, 2X6, HEAVY DUTY POCKET KIT	395.33
9852HD-84	9852HD, 84", 250 lbs, 2x6, Heavy Duty Pocket Door Kit	451.16



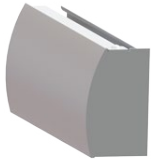
Sliding Door Hardware - Components (The parts listed below are NON-INTERCHANGEABLE with previous versions)



Description			List
1-269-8651	1-269-8651 PKT DR SFT CL MECH, UP TO 150 LB, CS/HD		80.03
9805	9805 4-WHEEL HANGER 2D, 150 LB, CS/HD SERIES - Parts Bag		20.67
9806	9806 4-WHEEL HANGER BALL BRG, 250 LB, CS/HD SERIES - Parts Bag		25.06
9881CS	RUBBER BUMPER, CS/HD SERIES		1.32
9639CS	MULLION CONVERSION KIT, CS/HD SERIES		31.45
9634CS	1-3/4" ADAPTER KIT, CS/HD SERIES		11.02
9883CS	FLOOR GUIDE, CS/HD SERIES		7.52
9889CS	1-3/8" POCKET GUIDE, CS/HD SERIES		10.21
9303HD-72	9303 SDH HD 72" MIL TRACK		33.00
9303HD-96	9303 SDH HD 96" MIL TRACK		50.00
9303HS-144	9303 SDH HD 144" MIL TRACK		81.00



Sliding Door Hardware - 9710HD Packaged Sets - Wall-Mount




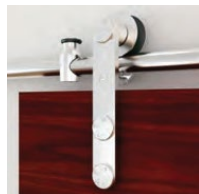
Description		List
9710HD-72 CLR Packaged Sets for heavy duty single doors and bi-parting doors up to 250 lbs. (113kg)		
9710HD-96 CLR Packaged Sets for heavy duty single doors and bi-parting doors up to 250 lbs. (113kg)		
9710HD-144 CLR Packaged Sets for heavy duty single doors and bi-parting doors up to 250 lbs. (113kg)		
9710HD-72 BLA Packaged Sets for heavy duty single doors and bi-parting doors up to 250 lbs. (113kg)		
9710HD-96 BLA Packaged Sets for heavy duty single doors and bi-parting doors up to 250 lbs. (113kg)		
9710HD-144 BLA Packaged Sets for heavy duty single doors and bi-parting doors up to 250 lbs. (113kg)		
System Includes: 9803 Track, fascia, end caps and 9806 parts bags. (Heavy duty aluminum wall-mount box track, anodized fascia, end caps and hardware for 1" (25mm) and		
9611HD System Includes: (2) 9303HD Aluminum track - see SDH components section, (4) 9806 BB- 1-wheel hangers - see SDH components section, (2) Flush cup pulls, (1) Floor channel door guide, Parts bag		
Product Information: Available sizes: 72" (1829 mm), 96" (2438 mm), 144" (3658 mm), For 1-1/8" to 1-3/4" thick doors, Maximum door weight: up to 250 lbs., Maximum door weight: up to 250 lbs., Optional soft-close (1-269-8651) for doors up to 150 lbs., Meets performance ANSI/BHMA A156.14 (Grade 1) for sliding doors exceeding 100,000 cycles		
Note: 9710HD replaces 9710. Also, black replaces DBZ which is no longer available - The components between new and previous versions are NON-INTERCHANGEABLE		
9710HD-72 CLR	9710 WL MNT HD 72" Clear	304.12
9710HD-96 CLR	9710 WL MNT HD 96" Clear	350.91
9710HD-144 CLR	9710 WL MNT HD 144" Clear	584.81
9710HD-72 BLA	9710 WL MNT HD 72" Black	380.16
9710HD-96 BLA	9710 WL MNT HD 96" Black	438.61
9710HD-144 BLA	9710 WL MNT HD 144" Black	605.00

9710HD Wall-Mount Replacement Parts - Description - The components between new and previous versions are NON-INTERCHANGEABLE

9703HD-72	9703HD WL MNT HD 72" MIL (Track)	89.00
9703HD-96	9703HD WL MNT HD 96" MIL (Track)	117.00
9704-72 CLR	9704 WL MNT 72" CLR (Fascia)	105.00
9704-72 BLA	9704 WL MNT 72" BLA (Fascia)	124.00
9704-96 CLR	9704 WL MNT 96" CLR (Fascia)	136.00
9704-96 BLA	9704 WL MNT 96" BLA (Fascia)	153.00
9705 CLR	9705 WL MNT PLASTIC CLR (2- pk Polybag End Cap)	35.00
9705 BLA	9705 WL MNT PLASTIC BLACK (2-Pack Poly Bag End Cap)	42.00
1-159-0003	1-159-0003 Center Stop Bumpers	9.50
1-569-0004	1-569-0004 Wall-Mount Adjustable Fin Guide	4.65
















Sliding Door Hardware - 9400 Series Stainless Barn Door


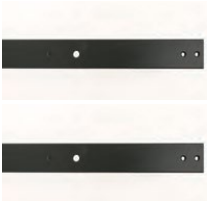

	Description	Finish	List	Case Qty
	9432 Packaged Sets - Top Mount Stick 2m SS Round Rail			
	Includes stainless steel track with two end caps, hangers with wall brackets, one bottom door guide, two track stops, mounting and installation hardware			
	9432-78 - Top Mount Stick 2m (78-3/4") SS Round Rail			
	9432-96 - Top Mount Stick 2m (96-3/4") SS Round Rail	32D	350.00	1
		32D	395.00	1
	9436 Packaged Sets - Face Mount Strap Stick 2m SS Round Rail			
	Includes stainless steel track with two end caps, hangers with wall brackets, one bottom door guide, two track stops, mounting and installation hardware			
	9436-78 - Face mount Strap Stick 2m (78-3/4") SS Round Rail			
	9436-96 - Face mount Strap Stick 2m (96-3/4") SS Round Rail	32D	445.00	1
		32D	475.00	1



Sliding Door Hardware - 9400 Series Stainless Barn Door Components

	Description	Finish	List	Case Qty
	1-269-8650 Spring Loaded Cushion Stop for 9400 Barn Door Series I	32D	34.45	1
	1-269-8663 Round Rail Connector SS304 satin nickel	32D	42.53	1
	1-269-8665 Tool set for O5WG; O6WG; O7WG (round rail)		4.51	1
	1-269-8666 Tool set for O1W; O2W (round rail)	32D	4.51	1
	1-269-8667 End Cap	32D	11.40	1
	1-269-8668 Guide for wood door		7.14	1
	1-269-8669 Door Stop	32D	49.67	1
	1-269-8670 Guide for glass door	32D	35.52	1
	1-269-8671 Top Mount Stick Sliding Door Roller for Wood, SS304 Satin	32D	177.27	1
	1-269-8674 Strap Stick Sliding Door Roller for Wood and Glass, SS304 Satin	32D	354.48	1
	1-269-8678 Flat Rail Door Stopper Left, SS304 Satin	32D	70.91	1
	1-269-8679 Flat Rail Door Stopper Right, SS304 Satin	32D	70.91	1
	1-269-8680 Flat Rail Anti Jump	32D	4.26	1

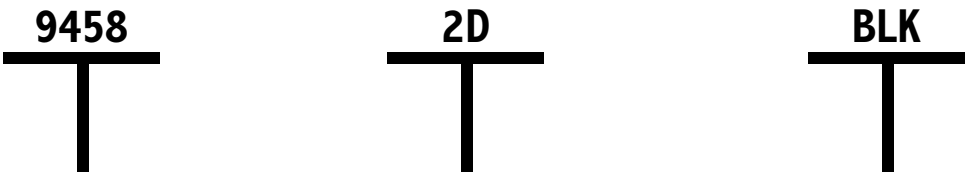


	Description	Finish	List
	9456-72 Flat Rail Steel Black Top Mount 72" Track Kit Includes Track	BLK	160.00
	9456-96 Flat Rail Steel Black Top Mount 96" Track Kit Includes Track	BLK	175.00
	9457-72 Flat Rail Steel Black 3" Hook 72" Track Kit Includes Track	BLK	160.00
	9457-96 Flat Rail Steel Black 3" Hook 96" Track Kit Includes Track	BLK	175.00
	1-269-8649 Flat Rail Track Connector	BLK	16.16
	1-269-8648 72" Rail Only	BLK	114.19
	1-269-8647 Door Stop	BLK	129.04
	1-269-8646 Flat Rail Soft Close Add On	BLK	80.68
	1-269-8652 9456 e-Conestoga - Top Mount Hanger Parts Bag	BLK	43.72
	1-269-8653 e-Conestoga Left and Right End Stop	BLK	14.60
	1-269-8654 e-Conestoga Track Support	BLK	8.77
	1-269-8655 e-Conestoga Floor Guide (One Piece)	BLK	8.77
	1-269-8656 e-Conestoga Anti-Jump Pin	BLK	8.77
	1-269-8657 e-Conestoga Floor Guide (Two Piece)	BLK	14.60
	1-269-8658 e-Conestoga 72" Track	BLK	58.32
	1-269-8659 9457 e-Conestoga - Face Mount Hanger	BLK	49.55
	1-269-8660 e-Conestoga 96" Track	BLK	75.79



Sliding Door Hardware- Barn Door Privacy Lock

How to Order



For 1-3/8" (35mm) to 1-3/4"(40mm) thick doors standard.

- Non-handed.
- ADA Compliant thumb turn for commercial applications.
- 2-1/4" or 3-1/2" backset options (see specifications for corresponding wall thickness).
- Drive in bolt casing diameter: 1" (25mm).
- Lock bolt: 1/2" (13mm) diameter, stainless Steel material.
- Lock bolt has 1" projection allowing up to 1/2" door to wall gap. Extra spacer ring accommodates up to 3/4" gap between barn door and wall.
- 1-1/4" diameter spring-loaded dust proof strike provides ample space to receive 1/2" bolt, allows easy locking from privacy side. Strike mounted in barn door for standard door.



Description	Finish	List
94582D-32D Round ADA TT Stainless 2-1/4" Backset	32D	228.14
94582D-10B Round ADA TT Oil Rubbed Bronze 2-1/4" Backset	10B	228.14
94582D-BLK Flat Rail Steel Black 3" Hook 72" Track Kit Includes Track	BLK	228.14
945835-32D Round ADA TT Stainless Steel 3-1/2" Backset	32D	228.14
945835-10B Round ADA TT Oil Rubbed Bronze 3-1/2" Backset	10B	228.14
945835-BLK Round ADA TT Black 3-1/2" Backset	BLK	228.14



Description	Finish	List
9459-32D Surface Jamb Barn Door Lock ADA 1-9/16" Thumb Lever	32D	241.97
9459-BLK Surface Jamb Barn Door Lock ADA 1-9/16" Thumb Lever	10B	241.97

Sliding Door Hardware - Optional Components



Description	Finish	List	Case Qty.
330D	US3	12.15	20
Pocket Door Latch	US5	12.15	
Material: Cast brass	US10	13.60	
Fits: 1-3/8" - 1-3/4" door	US10B	15.15	
Size: 2-3/4" x 2-1/2"	US15	12.15	
Finger Pull Extends: 1-3/8"	US15A	12.95	
Fasteners: #6 x 5/8" OPHWS	US19	7.70	
	US26	12.15	
	US26D	12.95	



330L	US3	14.20	20
Privacy Pocket Door Latch	US5	14.55	
Material: Brass	US10	9.85	
Size: 2-3/4" x 2-1/2"	US10B	17.20	
Finger Pull Extends: 1-3/8"	US15	14.65	
Strike: 1" x 2-1/4"	US15A	14.55	
1-3/8" doors	US19	14.55	
Fasteners: #6 x 5/8" OPHWS; #6 x 3/4" FPHWS	US26	14.20	
	US26D	14.95	



330M	US3	15.00	20
Privacy Pocket Door Latch	US5	26.00	
Material: Brass	US10	34.60	
Size: 2-3/4" x 2-1/2"	US10B	15.90	
Finger Pull Extends: 1-3/8"	US15	34.60	
Strike: 1" x 2-1/4"	US15A	34.60	
1-3/4" doors	US19	34.60	
Fasteners: #6 x 5/8" OPHWS; #6 x 3/4" FPHWS	US26	15.00	
	US26D	14.15	



1741	US2D	2.00	50
Full Mortise Plain Bearing			
Hinges with Screws			
3-1/2" x 3-1/2"			



2610	US3	1.00	500
Finger Pull	US4	1.00	
Material: Brass	US5	1.00	
Overall Diameter: 31/32"	US10A	1.00	
Finger Pull Diameter: 3/4"	US15	1.00	
Pull Clearance: 5/16"	US15A	1.00	
Projection: 1/32"	US26	1.00	
	US26D	1.00	



2620	US10A	1.65	
Round Flush Pull	US15	1.65	
Material: Brass	US26D	1.65	
Overall Diameter: 31/32"			
Finger Pull Diameter: 1-11/16"			
Pull Clearance: 11/32"			
Projection: 5/64"			



Sliding Door Hardware - Optional Components



2630

Round Flush Pull

Material: Brass

Overall Diameter: 2-7/16"

Finger Pull Diameter: 2-1/16"

Pull Clearance: 1 1/32"

Projection: 3/32"

Finish	List	Case Qty.
US3	4.30	50
US4	4.30	
US5	4.30	
US10A	4.30	
US15	4.30	
US15A	4.30	
US26	4.30	
US26D	4.30	



9558

Wood Knob

Knob Diameter: 1-1/2"

Base Diameter: 15/16"

Fasteners: #8 x 1-3/4" PPHWS

Wood	1.90	100
------	------	-----



1-159-0003

Center Bumper Stop

For use with 9303HD Track

	9.50	100
--	------	-----



2640

Oblong Flush Pull

Material: Brass

Size: 1-5/16" x 2-3/4"

Cup Clearance: 5/16"

Fasteners: #6 x 5/8" OPHWS

Finish	List	Box Qty.	Case Qty.
US3	7.88	-	50
US4	7.88		
US5	7.88		
US10A	7.88		
US15	7.88		
US15A	7.88		
US26	7.88		
US26D	7.88		



9566

Knob

Material: Zinc

Knob Diameter: 1-1/4"

Projection: 1"

Fasteners: #8 - 32 x 2" PPHMS; #8 - 32 x 1-3/4" PPHMS

US3	9.19	-	100
US4	10.30		
US5			
US10A	10.30		
US10B	10.30		
US15	10.30		
US15A			
US26	9.19		
US26D	10.30		



9567

Rose - For use with 9566 knob

Material: Zinc

Base Diameter: 1-3/4"

Projection: 15/32"

Fasteners: #8 - 32 x 2" PPHMS; #8 - 32 x 1-3/4" PPHMS

US3		-	100
US4			
US5			
US10A			
US10B			
US15			
US15A			
US26			
US26D			



9884

Pocket Door Edge Pull

Material: Zinc

Finger Pull Extends: 1-1/16"

Faceplate: 21/32" x 3-1/2"

Fasteners: #6 x 5/8" FPHWS

US3	10.42	-	20
-----	-------	---	----

