

# Premier Electromagnetic Locking Solutions

Product Pricelist 2026

U.S. & Canada Effective Date: February 2, 2026



Experience a safer  
and more open world

# Premier Electromagnetic Locking Solutions

## Product Pricelist 2026

U.S. & Canada Effective Date: February 2, 2026



# Securitron Products

## Electromagnetic Locks

### Intelligent Magnalocks®

|               |   |
|---------------|---|
| M380E EcoMag® | 2 |
| M680E EcoMag® | 2 |

### Delayed Egress Magnalocks®

|                             |   |
|-----------------------------|---|
| DEM680E EcoMag®             | 3 |
| DEM680E EcoMag® Accessories | 3 |

### Durable Magnalocks®

|                                  |     |
|----------------------------------|-----|
| M32                              | 3   |
| M62                              | 4   |
| DM62                             | 4   |
| M82                              | 5   |
| M32, M62, M82 Brackets           | 5   |
| M32, M62, M82 Lock Housing       | 6   |
| M32, M62, M82 Dress Covers       | 6   |
| M32, M62, M82 Accessories        | 6   |
| M38                              | 7   |
| M68                              | 7   |
| Universal Magnalock® Accessories | 7-9 |

### Recessed Magnalocks®

|      |   |
|------|---|
| M34R | 9 |
|------|---|

### Shear Aligning Magnalocks®

|           |   |
|-----------|---|
| SAM, SAM2 | 9 |
|-----------|---|

## Cabinet Locks

|        |    |
|--------|----|
| MCL    | 10 |
| M32-SS | 10 |

## Specialty Locks

|                                   |    |
|-----------------------------------|----|
| GL1 Gate Lock                     | 10 |
| MM15 Electromechanical Magnalock® | 11 |

## Electric Strikes

|                            |    |
|----------------------------|----|
| UNL, MUNL Electric Strikes | 11 |
|----------------------------|----|

## Keypads & Card Readers

### Stand Alone Keypads

|       |    |
|-------|----|
| DK-12 | 12 |
|-------|----|

### Keypad Systems

|       |    |
|-------|----|
| DK-16 | 12 |
| DK-26 | 12 |

### Aperio® Wireless Card Reader Kits

|       |    |
|-------|----|
| R100H | 13 |
|-------|----|

## Push Buttons & Egress Devices

### Exit Motion Sensor

|                         |    |
|-------------------------|----|
| XMS2 Exit Motion Sensor | 14 |
|-------------------------|----|

### Emergency Exit Buttons

|     |    |
|-----|----|
| EEB | 14 |
|-----|----|

### Push Buttons

|      |    |
|------|----|
| PB   | 14 |
| PB2  | 15 |
| PB3  | 15 |
| PB4L | 16 |
| PB5  | 16 |

### Key Switches

|                           |    |
|---------------------------|----|
| MK Mortise Key Switches   | 17 |
| KP-1 Tubular Key Switches | 17 |

### Wave Switch

|                       |    |
|-----------------------|----|
| WSS Wave Sense Switch | 18 |
|-----------------------|----|

### Capacitive Plate

|                        |    |
|------------------------|----|
| SP-1 Capacitive Switch | 18 |
|------------------------|----|

### Egress Bars

|     |    |
|-----|----|
| DSB | 19 |
| TSB | 19 |
| EMB | 20 |

### Egress Handles

|     |    |
|-----|----|
| TSH | 20 |
| EMH | 20 |

## Power

### Switching Power Supplies

|                           |    |
|---------------------------|----|
| AQD Series Power Supplies | 21 |
| AQL Series Power Supplies | 23 |

### PoE Power Supplies

|                     |    |
|---------------------|----|
| AQE Single-Port PoE | 25 |
|---------------------|----|

### Plug-In Power Supplies

|                            |    |
|----------------------------|----|
| PSP Plug-In Power Supplies | 25 |
|----------------------------|----|

### Power Supply Accessories

|                           |    |
|---------------------------|----|
| Additional Power Products | 26 |
|---------------------------|----|

## Power Transfers

### Concealed Power Transfers

|  |    |
|--|----|
| CEPT Concealed Electrical Power Transfers  | 27 |
| SEPT Square-Cut Electrical Power Transfers | 27 |
| EPT Electrical Power Transfers             | 28 |

### Electric Hinges

|                    |    |
|--------------------|----|
| EH Electric Hinges | 28 |
|--------------------|----|

### Door Cords

|                  |    |
|------------------|----|
| TSB-C Door Cords | 28 |
|------------------|----|

## Accessories

### Timers & Alarms

|                                       |    |
|---------------------------------------|----|
| DT-7, PZ1, TM-2, TM-9 Timers & Alarms | 29 |
|---------------------------------------|----|

### Door Position Monitoring

|   |    |
|---|----|
| BA-DPA Door Prop Alarm Monitoring               | 29 |
| DPS Door Position Switches                      | 29 |
| MSS Magnetic High Security Door Position Switch | 30 |
| LM Latch Monitor Status Switch                  | 30 |

### Relays

|                                      |    |
|--------------------------------------|----|
| RB-4, RLP Relay Boards & Logic Packs | 30 |
|--------------------------------------|----|

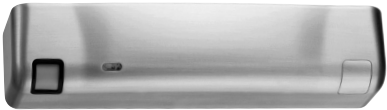
## Warranties | Terms & Conditions

|                                |       |
|--------------------------------|-------|
| Warranties, Terms & Conditions | 31-32 |
|--------------------------------|-------|

# Electromagnetic Locks

## M380E EcoMag® 600 lbs. Intelligent Magnalocks®

| MODEL    | DESCRIPTION        | 605    | 606    | 612    | 613E   | 628    | 629    | 630    | BSP    |
|----------|--------------------|--------|--------|--------|--------|--------|--------|--------|--------|
| M380EBD  | BondSTAT, DPS      | \$1112 | \$1112 | \$1112 | \$989  | \$849  | \$1112 | \$1112 | \$989  |
| M380EBDX | BondSTAT, DPS, REX | \$1323 | \$1323 | \$1323 | \$1200 | \$1059 | \$1323 | \$1323 | \$1200 |



### How to Order *Specify quantity and the following information. Order related products separately.*

| MODEL SERIES   | ACCESSORY OPTIONS                                     | FINISH OPTIONS  |  |
|--|---|---|--|
| M380EBD  | X   | – 606   |  |
| M380EBD 600 lbs with BondSTAT Monitor & Door Position Switch | (blank) No Accessory Options<br>X PIR Request to Exit | 628/US28 Satin Aluminum Clear<br>605/US3 Bright Brass<br>606/US4 Satin Brass<br>612/US10 Satin Bronze | 613E Dark Oxidized Satin Bronze<br>629 Bright Stainless Steel<br>630 Satin Stainless Steel<br>BSP Black Suede Powder |

## M680E EcoMag® 1,200 lbs. Intelligent Magnalocks®

| MODEL    | DESCRIPTION        | 605    | 606    | 612    | 613E   | 628    | 629    | 630    | BSP    |
|----------|--------------------|--------|--------|--------|--------|--------|--------|--------|--------|
| M680E    | Standard Model     |        |        |        |        | \$909  |        |        |        |
| M680EBD  | BondSTAT, DPS      | \$1231 | \$1231 | \$1231 | \$1110 | \$968  | \$1231 | \$1231 | \$1110 |
| M680EBDX | BondSTAT, DPS, REX | \$1444 | \$1444 | \$1444 | \$1323 | \$1176 | \$1444 | \$1444 | \$1323 |



### How to Order *Specify quantity and the following information. Order related products separately.*

| MODEL SERIES      | MONITORING OPTIONS  | ACCESSORY OPTIONS                                     | FINISH OPTIONS  |  |
|-------------------|---|---|---|--|
| M680E             | BD  | X   | – 606   |  |
| M680E (1,200 lbs) | (blank) No Monitoring<br>BD BondSTAT Monitor & Door Position Switch | (blank) No Accessory Options<br>X PIR Request to Exit | 628/US28 Satin Aluminum Clear<br>605/US3 Bright Brass<br>606/US4 Satin Brass<br>612/US10 Satin Bronze | 613E Dark Oxidized Satin Bronze<br>629 Bright Stainless Steel<br>630 Satin Stainless Steel<br>BSP Black Suede Powder |

**DEM680E EcoMag® 1,200 lbs. Delayed Egress Magnalocks®**

| MODEL         | DESCRIPTION                    | 605    | 606    | 612    | 613E   | 628    | 629    | 630    | BSP    |
|---------------|--------------------------------|--------|--------|--------|--------|--------|--------|--------|--------|
| DEM680E       | Standard Model (Supports HUGS) | \$1940 | \$1940 | \$1940 | \$1818 | \$1665 | \$1940 | \$1940 | \$1818 |
| DEM680E-CA15S | California 15 Second Compliant | \$1940 | \$1940 | \$1940 | \$1818 | \$1665 | \$1940 | \$1940 | \$1818 |
| DEM680E-CA30S | California 30 Second Compliant | \$1940 | \$1940 | \$1940 | \$1818 | \$1665 | \$1940 | \$1940 | \$1818 |
| DEM680E-CH    | Chicago Compliant              | \$1940 | \$1940 | \$1940 | \$1818 | \$1665 | \$1940 | \$1940 | \$1818 |

**How to Order**

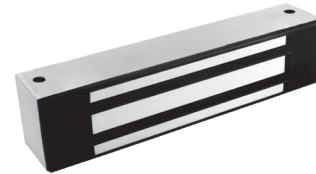
| MODEL SERIES               | TIMING OPTIONS                         | FINISH OPTIONS                  |
|----------------------------|--|---------------------------------|
| <b>DEM680E</b>             |  | <b>– 606</b>                    |
| Delayed Egress M680 EcoMag | (blank) Standard Model (Supports HUGS) | 628 Satin Aluminum Clear        |
|                            |  | 605 Bright Brass                |
|                            | -CA15S California 15 Second Compliant  | 606 Satin Brass                 |
|                            |  | 612 Satin Bronze                |
|                            | -CA30S California 30 Second Compliant  | 613E Dark Oxidized Satin Bronze |
|                            |  | 629 Bright Stainless Steel      |
|                            | -CH Chicago Compliant                  | 630 Satin Stainless Steel       |
|                            |  | BSP Black Suede Powder          |

**M680E Accessories**

| MODEL    | DESCRIPTION                        | BK    | CL    |
|----------|------------------------------------|-------|-------|
| ASB-680  | Aluminum Spacer Bracket for M680   | \$180 | \$162 |
| CWB-680  | Concrete/Wood Bracket for M680     | \$180 | \$162 |
| GDHB-680 | Glass Door Header Bracket for M680 | \$197 | \$180 |

**M32 600 lbs. Durable Magnalocks®**

| ITEM   | DESCRIPTION   | PRICE |
|--------|---|-------|
| M32    | No Monitoring   | \$516 |
| M32B   | BondSTAT Monitor                                      | \$659 |
| M32BD  | BondSTAT Monitor & Door Position Switch               | \$740 |
| M32D   | Door Position Switch                                  | \$609 |
| M32F   | Face Drilled, No Monitoring                           | \$516 |
| M32FB  | Face Drilled, BondSTAT Monitor                        | \$659 |
| M32FBD | Face Drilled, BondSTAT Monitor & Door Position Switch | \$740 |
| M32FD  | Face Drilled, Door Position Switch                    | \$609 |

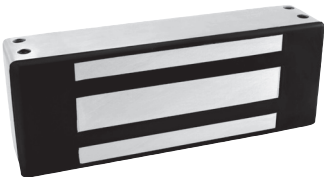
**How to Order** *Specify quantity and the following information. Order related products separately.*

| MODEL SERIES  | MOUNTING METHOD      | MONITORING OPTIONS                         | STRIKE PLATE OPTIONS                          |
|---------------|----------------------|--|---|
| <b>M32</b>    |                      | <b>BD</b>                                  | <b>-SS</b>                                    |
| M32 (600 lbs) | (blank) Direct Mount | (blank) No Monitoring                      | (blank) Standard Strike                       |
|               | F Face Drilled       | B BondSTAT Monitor                         | SS Split Strike (Add \$168)*                  |
|               |                      | D Door Position Switch                     | SASM Shock Absorbing Strike Mount (Add \$113) |
|               |                      | BD BondSTAT Monitor & Door Position Switch |   |

\*D and BD monitoring options not available with (SS) Split Strike option.

M62 1,200 lbs. Durable Magnalocks®

| ITEM       | DESCRIPTION  | PRICE |
|------------|--|-------|
| M62        | No Monitoring  | \$659 |
| M62B       | BondSTAT Monitor   | \$802 |
| M62BD      | BondSTAT Monitor & Door Position Switch  | \$883 |
| M62D       | Door Position Switch   | \$753 |
| M62F       | Face Drilled   | \$659 |
| M62FB      | Face Drilled, BondSTAT Monitor   | \$802 |
| M62FBD     | Face Drilled, BondSTAT Monitor & Door Position Switch  | \$883 |
| M62FD      | Face Drilled, Door Position Switch   | \$753 |
| M62G       | Gate Conduit   | \$703 |
| M62GB      | Gate Conduit, BondSTAT Monitor   | \$847 |
| M62GBD     | Gate Conduit, BondSTAT Monitor & Door Position Switch  | \$930 |
| M62GD      | Gate Conduit, Door Position Switch   | \$800 |
| M62FG      | Face Drilled, Gate Conduit   | \$702 |
| M62FGB     | Face Drilled, Gate Conduit, BondSTAT Monitoring  | \$844 |
| M62FGBD    | Face Drilled, Gate Conduit, BondSTAT Monitoring & Door Position Switch                             | \$928 |
| M62FGD     | Face Drilled, Gate Conduit, Door Position Switch   | \$802 |
| M62FG-EX   | Face Drilled, Gate Conduit for Hazardous Locations   | \$702 |
| M62FGB-EX  | Face Drilled, Gate Conduit with BondSTAT Monitoring for Hazardous Locations                        | \$820 |
| M62FGBD-EX | Face Drilled, Gate Conduit with BondSTAT Monitoring & Door Position Switch for Hazardous Locations | \$901 |
| M62FGD-EX  | Face Drilled, Gate Conduit with Door Position Switch for Hazardous Locations                       | \$802 |
| M62G-EX    | Gate Conduit for Hazardous Locations   | \$703 |
| M62GB-EX   | Gate Conduit with BondSTAT Monitoring for Hazardous Locations                                      | \$823 |
| M62GBD-EX  | Gate Conduit with BondSTAT Monitoring & Door Position Switch for Hazardous Locations               | \$930 |
| M62GD-EX   | Gate Conduit with Door Position Switch for Hazardous Locations                                     | \$776 |

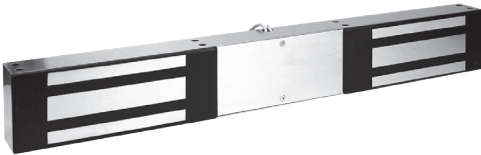


How to Order *Specify quantity and the following information. Order related products separately.*

| MODEL SERIES  | MOUNTING METHOD  | MONITORING OPTIONS  | STRIKE PLATE OPTIONS   |
|---|--|---|--|
| M62   | FG   | BD  | -SS  |
| M62 (1200 lbs)  | (blank) Direct Mount<br>F Face Drilled<br>G Gate Conduit | (blank) No Monitoring<br>B BondSTAT Monitor<br>D Door Position Switch<br>BD BondSTAT Monitor & Door Position Switch | (blank) Standard Strike<br>OS Offset Strike<br>SS Split Strike (Add \$168)*<br>SASM Shock Absorbing Strike Mount (Add \$113)<br>EX Hazardous Locations |
| *D and BD monitoring options not available with (SS) Split Strike option. |  |   |  |

DM62 Double 1,200 lbs. Durable Magnalocks®

| ITEM     | DESCRIPTION                   | PRICE  |
|----------|-------------------------------|--------|
| DM62     | 12/24 VDC                     | \$1411 |
| DM62-OS  | 12/24 VDC, Offset Strike      | \$1411 |
| DM62B    | 12/24 VDC, MBS                | \$1719 |
| DM62B-OS | 12/24 VDC, MBS, Offset Strike | \$1719 |
| DM62BD   | 12/24 VDC, MBS, DPS           | \$1898 |
| DM62D    | 12/24 VDC, DPS                | \$1622 |



Accessories

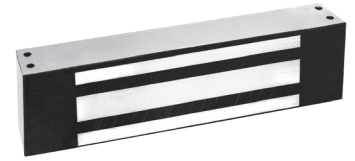
| ITEM         | DESCRIPTION   | PRICE |
|--------------|---|-------|
| ASCWB-DM62CL | Alum 1-1/2" Spacer — Concrete/Wood Bracket, DM62, Clear | \$245 |

How to Order *Specify quantity and the following information. Order related products separately.*

| MODEL SERIES | MONITORING OPTIONS  | STRIKE PLATE OPTIONS                        |
|--------------|---|---|
| DM62         | BD  | - OS  |
| DM62         | (blank) No Monitoring<br>B BondSTAT Monitor<br>D Door Position Switch | (blank) Standard Strike<br>OS Offset Strike |

## M82 1,800 lbs. Durable Magnalocks®

| ITEM    | DESCRIPTION   | PRICE  |
|---------|---|--------|
| M82B    | BondSTAT Monitor  | \$922  |
| M82BD   | BondSTAT Monitor & Door Position Switch                             | \$1006 |
| M82FB   | Face Drilled, BondSTAT Monitor                                      | \$922  |
| M82FBD  | Face Drilled, BondSTAT Monitor & Door Position Switch               | \$1006 |
| M82GB   | Gate Conduit, BondSTAT Monitor                                      | \$973  |
| M82GBD  | Gate Conduit, BondSTAT Monitor & Door Position Switch               | \$1052 |
| M82FGB  | Face Drilled, Gate Conduit, BondSTAT Monitor                        | \$973  |
| M82FGBD | Face Drilled, Gate Conduit, BondSTAT Monitor & Door Position Switch | \$1054 |



### How to Order

Specify quantity and the following information. Order related products separately.

| MODEL SERIES   | MOUNTING METHOD  | MONITORING OPTIONS   | STRIKE PLATE OPTIONS   |
|----------------|--|--|--|
| M82            | FG   | BD   | -SS  |
| M82 (1800 lbs) | (blank) Direct Mount<br>F Face Drilled<br>G Gate Conduit | B BondSTAT Monitor<br>BD BondSTAT Monitor & Door Position Switch | (blank) Standard Strike<br>OS Offset Strike<br>SS Split Strike (Add \$168)*<br>SASM Shock Absorbing Strike Mount (Add \$113) |

\*BD monitoring options not available with (SS) Split Strike option.

## Aluminum Frame Spacer Bracket

| MODEL   | DESCRIPTION                      | BK    | CL    |
|---------|----------------------------------|-------|-------|
| ASB-32  | For M32                          | \$89  | \$67  |
| ASB-62  | For M62                          | \$90  | \$67  |
| ASB-82  | For M82                          | \$125 | \$107 |
| ASB-680 | Aluminum Spacer Bracket for M680 | \$180 | \$162 |



## Concrete/Wood Bracket

| MODEL   | DESCRIPTION                    | BK    | CL    |
|---------|--------------------------------|-------|-------|
| CWB-32  | For M32                        | \$100 | \$85  |
| CWB-62  | For M62                        | \$111 | \$95  |
| CWB-82  | For M82                        | \$135 | \$118 |
| CWB-680 | Concrete/Wood Bracket for M680 | \$180 | \$162 |



## Adjustable Z-Bracket

| MODEL    | DESCRIPTION     | BK    | CL    | SS    |
|----------|-----------------|-------|-------|-------|
| ZA-32/62 | For M32 and M62 | \$250 | \$231 | \$261 |
| ZA-82    | For M82         | \$302 | \$277 | \$313 |



### How to Order

Specify quantity and the following information. Order related products separately.

| BRACKET TYPE                      | MODEL SERIES | STRIKE PLATE OPTIONS |
|-----------------------------------|--------------|----------------------|
| ASB                               | -32          | BK                   |
| ASB Aluminum Frame Spacer Bracket | 32           | BK Black Anodized    |
| CWB Concrete/Wood Bracket         | 62           | CL Clear Anodized    |
| ZA Adjustable Z-Bracket           | 82           | SS Satin Stainless   |

NOTE: SS only available with ZA Bracket

Lock Housing

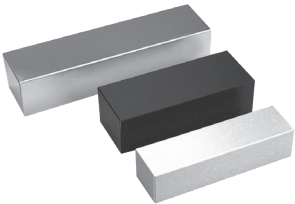
| ITEM    | DESCRIPTION                            | PRICE  |
|---------|--|--------|
| HHD-32  | Lock Housing for M32 - Dbl. Horizontal | \$1561 |
| HHD-62  | Lock Housing for M62 - Dbl. Horizontal | \$1681 |
| HHD-82  | Lock Housing for M82 - Dbl. Horizontal | \$1800 |
| HHSL-32 | Lock Housing for M32 - SLR Horizontal  | \$1394 |
| HHSL-62 | Lock Housing for M62 - SLR Horizontal  | \$1292 |
| HHSR-32 | Lock Housing for M32 - SRR Horizontal  | \$1394 |
| HHSR-62 | Lock Housing for M62 - SRR Horizontal  | \$1292 |
| HVD-32  | Lock Housing for M32 - Dbl. Vertical   | \$1600 |
| HVD-62  | Lock Housing for M62 - Dbl. Vertical   | \$1714 |
| HVD-82  | Lock Housing for M82 - Dbl. Vertical   | \$1828 |

NOTE: HHD Max Length 96", HHSL Max Length 48", HHSR Max Length 48", HVD Max Length 96"



Dress Covers

| MODEL  | DESCRIPTION      | BK    | BP    | CL    | SP    |
|--------|------------------|-------|-------|-------|-------|
| DC-32  | For M32          | \$69  | \$176 | \$68  | \$165 |
| DC-62  | For M62          | \$69  | \$176 | \$68  | \$165 |
| DC-82  | For M82          | \$86  | \$184 | \$77  | \$175 |
| DDC-32 | Double — For M32 | \$182 |       | \$182 |       |
| DDC-62 | Double — For M62 | \$182 |       | \$182 |       |



How to Order

Specify quantity and the following information. Order related products separately.

| DRESS COVER  | MODEL | FINISH                |
|--|-------|-----------------------|
| DC   | - 32  | BK                    |
| DC Dress Cover   | 32    | BK Black Anodized     |
| DDC Double Dress Cover                                   | 62    | BP Brass Polished     |
| (available in models 32 & 62 in BK and CL finishes only) | 82    | CL Clear Anodized     |
|  |       | SP Stainless Polished |

M32, M62, M82 Accessories

| ITEM      | DESCRIPTION  | PRICE |
|-----------|--|-------|
| AOS-62    | Offset Strike Plate for M62  | \$175 |
| AOS-62D   | Offset Strike Plate for M62D   | \$216 |
| AOS-82    | Offset Strike Plate for M82  | \$229 |
| APS-32    | Strike Plate for M32   | \$164 |
| APS-62    | Strike Plate for M62   | \$184 |
| APS-82    | Strike Plate for M82   | \$213 |
| ASS-32    | Strike Plate for M32— Split Set with Fasteners & Sex Bolt  | \$221 |
| ASS-62    | Strike Plate for M62— Split Set with Fasteners & Sex Bolt  | \$259 |
| ASS-82    | Strike Plate for M82— Split Set with Fasteners & Sex Bolt  | \$288 |
| EASB-250  | Energy Absorbing Bolt — 1/4" Spacer Kit  | \$70  |
| EASB-32   | Energy Absorbing Sex Bolt for M32  | \$363 |
| EASB-62   | Energy Absorbing Sex Bolt for M62  | \$535 |
| EASB-82   | Energy Absorbing Sex Bolt for M82  | \$584 |
| MTK-32-62 | Magnetic, metal marking template that streamlines installation for the M32 and M62 electromagnetic locks | \$108 |
| SASM      | Shock Absorbing Strike Mount for M32, M62, M82   | \$113 |
| SB-1      | Sex Bolt Replacement, Clear  | \$22  |
| SB-1-03   | Sex Bolt Replacement, Polished Brass   | \$48  |
| SB-1-10B  | Sex Bolt Replacement, Oil-Rubbed Bronze  | \$48  |
| TDK-1     | Thick Door Kit   | \$42  |

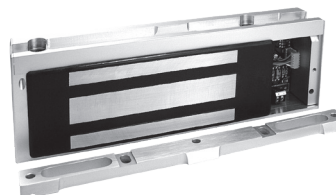
## M38 600 lbs. Durable Magnalocks®

| ITEM    | DESCRIPTION                          | PRICE  |
|---------|--------------------------------------|--------|
| M38     | 12/24 VDC                            | \$700  |
| M38D    | 12/24 VDC, DPS                       | \$815  |
| M38DL   | 12/24 VDC, DPS, LED                  | \$863  |
| M38DLS  | 12/24 VDC, DPS, LED, Senstat         | \$979  |
| M38DLST | 12/24 VDC, DPS, LED, Senstat, Tamper | \$1061 |
| M38DS   | 12/24 VDC, DPS, Senstat              | \$927  |
| M38LS   | 12/24 VDC, LED, Senstat              | \$863  |



## M68 1,200 lbs. Durable Magnalocks®

| ITEM    | DESCRIPTION                          | PRICE  |
|---------|--------------------------------------|--------|
| M68     | 12/24 VDC                            | \$871  |
| M68D    | 12/24 VDC, DPS                       | \$985  |
| M68DL   | 12/24 VDC, DPS, LED                  | \$1034 |
| M68DLS  | 12/24 VDC, DPS, LED, Senstat         | \$1150 |
| M68DLST | 12/24 VDC, DPS, LED, Senstat, Tamper | \$1232 |
| M68DS   | 12/24 VDC, DPS, Senstat              | \$1098 |
| M68LS   | 12/24 VDC, LED, Senstat              | \$1034 |
| M68S    | 12/24 VDC, Senstat                   | \$985  |



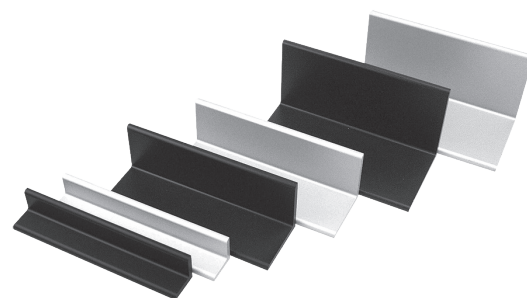
## M38, M68 Accessories

| ITEM    | DESCRIPTION                              | PRICE |
|---------|--|-------|
| TJ-38CL | Clear Anodized In-Swing Door Kit for M38 | \$291 |
| TJ-68CL | Clear Anodized In-Swing Door Kit for M68 | \$291 |

# Universal Magnalock Accessories

## Header Extension Brackets

| MODEL      | DESCRIPTION                 | BK    | CL    |
|------------|-----------------------------|-------|-------|
| HEB-1xx-8  | 1" x 1" x 8"                | \$76  | \$63  |
| HEB-1xx-12 | 1" x 1" x 12"               | \$89  | \$69  |
| HEB-2xx-8  | 2" x 2" x 8"                | \$98  | \$82  |
| HEB-2xx-12 | 2" x 2" x 12"               | \$101 | \$89  |
| HEB-3xx-8  | 3" x 3" x 8"                | \$113 | \$100 |
| HEB-3xx-12 | 3" x 3" x 12"               | \$126 | \$106 |
| HEB-3G     | 3" x 3" x 8" for Glass Door |       | \$120 |



## How to Order

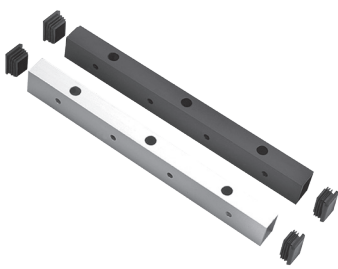
Specify quantity and the following information. Order related products separately.

| MODEL                | SIZE      | FINISH             | SIZE          |
|----------------------|-----------|--------------------|---------------|
| HEB                  | -1        | BK                 | -8            |
| HEB Header Extension | 1 1" x 1" | BK Black Anodized  | 8 8" Length   |
|                      | 2 2" x 2" | CL* Clear Anodized | 12 12" Length |
|                      | 3 3" x 3" |                    |               |

\*HEB-3G only available in Clear Anodized

Universal Header Brackets

| MODEL     | DESCRIPTION        | BK    | CL    |
|-----------|--------------------|-------|-------|
| UHB-xx-8  | 8" Header Bracket  | \$130 | \$110 |
| UHB-xx-12 | 12" Header Bracket | \$181 | \$158 |



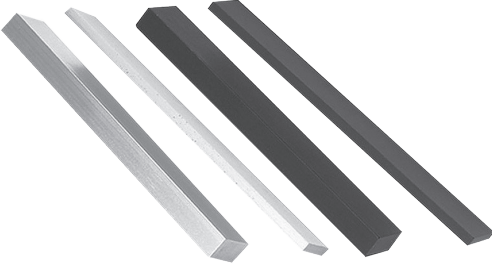
How to Order

Specify quantity and the following information. Order related products separately.

| MODEL                          | FINISH            | SIZE          |
|--------------------------------|-------------------|---------------|
| UHB                            | BK                | -8            |
| UHB Universal Header Extension | BK Black Anodized | 8 8" Length   |
|                                | CL Clear Anodized | 12 12" Length |

Stop Filler Plates

| MODEL         | DESCRIPTION         | BK   | CL   |
|---------------|---------------------|------|------|
| SFP-1/2-xx-8  | 1/2" x 1-1/4" x 8"  | \$60 | \$50 |
| SFP-1/2-xx-12 | 1/2" x 1-1/4" x 12" | \$67 | \$53 |
| SFP-1/4-xx-8  | 1/4" x 1-1/4" x 8"  | \$60 | \$50 |
| SFP-1/4-xx-12 | 1/4" x 1-1/4" x 12" | \$67 | \$53 |
| SFP-3/8-xx-8  | 3/8" x 1-1/4" x 8"  | \$60 | \$50 |
| SFP-3/8-xx-12 | 3/8" x 1-1/4" x 12" | \$67 | \$53 |
| SFP-5/8-xx-8  | 5/8" x 1-1/4" x 8"  | \$60 | \$50 |
| SFP-5/8-xx-12 | 5/8" x 1-1/4" x 12" | \$67 | \$53 |



How to Order

Specify quantity and the following information. Order related products separately.

| MODEL                 | SIZE              | FINSH             | SIZE          |
|-----------------------|-------------------|-------------------|---------------|
| SFP                   | -1/2              | BK                | -8            |
| SFP Stop Filler Plate | 1/2 1/2" x 1-1/4" | BK Black Anodized | 8 8" Length   |
|                       | 1/4 1/4" x 1-1/4" | CL Clear Anodized | 12 12" Length |
|                       | 3/8 3/8" x 1-1/4" |                   |               |
|                       | 5/8 5/8" x 1-1/4" |                   |               |

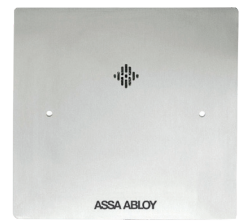
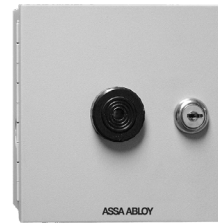
Additional Accessories

| ITEM     | DESCRIPTION   | PRICE |
|----------|---|-------|
| AKG      | Adhesive Kit for GDB permanently bonds to the glass using a special industrial adhesive   | \$259 |
| DCP-12X3 | Dress Cover Plate, 12" x 3" for larger strikes  | \$49  |
| GDB      | Glass Door Bracket permits strike plate installation on a solid glass door  | \$102 |
| IK       | This convenient, cost effective kit contains everything an installer needs to achieve professional, high quality Magnetic Lock installations. | \$834 |



## XDT Exit Delay Timer

| ITEM      | DESCRIPTION  | PRICE |
|-----------|--|-------|
| BA-XDT-12 | 12 VDC Boxed Alarm & Door Label Exit Delay Timer       | \$363 |
| BA-XDT-24 | 24 VDC Boxed Alarm & Door Label Exit Delay Timer       | \$363 |
| FA-XDT-12 | 12 VDC, Flush Mount with Alarm & Door Exit Delay Timer | \$363 |
| FA-XDT-24 | 24 VDC, Flush Mount with Alarm & Door Exit Delay Timer | \$363 |
| XDT-12    | 12 VDC Exit Delay Timer                                | \$241 |
| XDT-24    | 24 VDC Exit Delay Timer                                | \$226 |



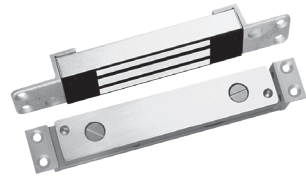
## M34R 500 lbs. Recessed Magnalocks®

| ITEM   | DESCRIPTION                   | PRICE |
|--------|-------------------------------|-------|
| M34R   | 12/24 VDC, Recessed           | \$600 |
| M34RB  | 12/24 VDC, Recessed, MBS      | \$756 |
| M34RBD | 12/24 VDC, Recessed, MBS, DPS | \$847 |
| M34RD  | 12/24 VDC, Recessed, DPS      | \$707 |



## SAM 1,200 lbs. Shear Aligning Magnalocks®

| ITEM  | DESCRIPTION  | PRICE  |
|-------|--|--------|
| SAM   | 12/24 VDC, Shear Aligning                          | \$1345 |
| SAMB  | 12/24 VDC, Shear Aligning, MBS                     | \$1467 |
| SAMBD | 12/24 VDC, Shear Aligning, MBS, DPS                | \$1550 |
| SAMD  | 12/24 VDC, Shear Aligning, DPS                     | \$1433 |
| SAMN  | 12/24 VDC, Shear Aligning with Narrow Strike Plate | \$1360 |



## SAM Accessories

| ITEM    | DESCRIPTION                          | PRICE |
|---------|--------------------------------------|-------|
| SMLS    | Surface Mount Housing Lock — Shear   | \$253 |
| SMSS    | Surface Mount Housing Strike — Shear | \$245 |
| SWB-03  | SAM Wood Bracket — Brass Polished    | \$343 |
| SWB-10B | SAM Wood Bracket — Oil Rubbed Bronze | \$345 |
| SWB-26D | SAM Wood Bracket — Satin Stainless   | \$136 |

NOTE: Not for use with SAM2-24 or SAMC2-24

## SAM2-24 600 lbs. Mini Shear Magnalocks®

| ITEM     | DESCRIPTION                 | PRICE  |
|----------|-----------------------------|--------|
| SAM2-24  | 24 VDC, Shear Aligning      | \$1018 |
| SAM2C-24 | 24 VDC, Shear Aligning, MBS | \$1072 |

# Cabinet Locks

## MCL 180 lbs. Cabinet Magnalocks®

| ITEM   | DESCRIPTION | PRICE |
|--------|-------------|-------|
| MCL-24 | 24 VDC      | \$324 |



## M32-SS 600 lbs. Cabinet Magnalocks®

| ITEM    | DESCRIPTION                            | PRICE |
|---------|--|-------|
| M32-SS  | Standard — No Monitoring, Split Strike | \$684 |
| M32B-SS | BondSTAT monitoring, Split Strike      | \$827 |



# Specialty Locks

## GL1 Specialty Gate Locks

| ITEM    | DESCRIPTION                                 | PRICE |
|---------|---|-------|
| GL1-FL  | Gate Lock, 12/24 VDC, Standard Fail Locked  | \$526 |
| GL1-FLM | Gate Lock, 12/24 VDC, Fail Locked Monitored | \$543 |
| GL1-FS  | Gate Lock, 12/24 VDC, Standard Fail Safe    | \$526 |
| GL1-FSM | Gate Lock, 12/24 VDC, Fail Safe Monitored   | \$543 |

\*Cylinder not available for Fail-Safe Version "FS" or "FSM"

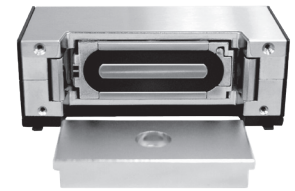


## GL1 Accessories

| ITEM   | DESCRIPTION  | PRICE |
|--------|--|-------|
| FMB9-4 | Post Shim Kit for Flex Mount Brackets — (Set of 4)       | \$36  |
| FMK-SL | Flex Mount Kit for Sliding Gate                          | \$164 |
| FMK-SW | Flex Mount Kit for Swinging Gate                         | \$203 |
| GMC    | Gate Lock Mortise Cylinder (for use with FL Models only) | \$53  |

## MM15 Specialty Electromechanical Magnalock

| ITEM    | DESCRIPTION                                      | PRICE |
|---------|--|-------|
| MM15    | 12/24 V, AC/DC                                   | \$747 |
| MM15DT  | 12/24 V, AC/DC, DPS, Tamper Switch               | \$914 |
| MM15G   | 12/24 V, AC/DC, Gate Conduit                     | \$830 |
| MM15GDT | 12/24 V, AC/DC, Gate Conduit, DPS, Tamper Switch | \$961 |



## MM15 Dress Cover

| MODEL   | BK   | BP    | BS    |
|---------|------|-------|-------|
| DC-MM15 | \$61 | \$152 | \$165 |

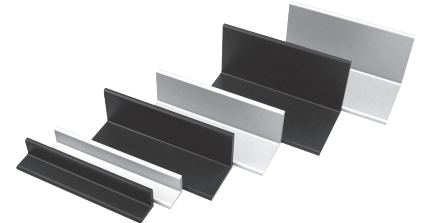


## MM15 Tamper Shield

| ITEM    | PRICE |
|---------|-------|
| MM15-TS | \$61  |

## MM15 Brackets

| MODEL         | DESCRIPTION                 | BK    | CL    |
|---------------|-----------------------------|-------|-------|
| HEB-1xx-MM15  | 1" Header Extension Bracket | \$74  | \$57  |
| HEB-2xx-MM15  | 2" Header Extension Bracket | \$74  | \$57  |
| HEB-3xx-MM15  | 3" Header Extension Bracket | \$74  | \$57  |
| SFP-1/2xxMM15 | 1/2" Stop Filler Plate      | \$64  | \$50  |
| SFP-3/8xxMM15 | 3/8" Stop Filler Plate      | \$64  | \$50  |
| SFP-5/8xxMM15 | 5/8" Stop Filler Plate      | \$64  | \$50  |
| Z-MM15        | Z-Bracket                   | \$176 | \$155 |



**How to Order** Specify quantity and the following information. Order related products separately.

| MODEL                | SIZE      | FINISH                 |
|----------------------|-----------|------------------------|
| <b>HEB</b>           | <b>-1</b> | <b>BK-MM15</b>         |
| HEB Header Extension | 1 1" x 1" | BK-MM15 Black Anodized |
|                      | 2 2" x 2" | CL-MM15 Clear Anodized |
|                      | 3 3" x 3" |                        |

| MODEL                 | SIZE                   | FINISH                |
|-----------------------|------------------------|-----------------------|
| <b>SFP</b>            | <b>-1/2</b>            | <b>BKMM15</b>         |
| SFP Stop Filler Plate | 1/2 1/2" x 1-1/4" x 6" | BKMM15 Black Anodized |
|                       | 3/8 3/8" x 1-1/4" x 6" | CLMM15 Clear Anodized |
|                       | 5/8 5/8" x 1-1/4" x 6" |                       |

# Electric Strikes

## Securitron UNL Electric Strike for Latchbolt Locks

| ITEM       | DESCRIPTION   | PRICE |
|------------|---|-------|
| UNL-12     | UnLatch for Cylindrical Locks - 12VDC                   | \$707 |
| UNL-24     | UnLatch for Cylindrical Locks - 24VDC                   | \$707 |
| UNL-12-10B | UnLatch for Cylindrical Locks- 12VDC, Oil Rubbed Bronze | \$786 |
| UNL-24-10B | UnLatch for Cylindrical Locks- 24VDC, Oil Rubbed Bronze | \$786 |



## Securitron MUNL Electric Strike for Latchbolt Locks

| ITEM        | DESCRIPTION  | PRICE  |
|-------------|--|--------|
| MUNL-12     | UnLatch for Mortise Lock- 12VDC                    | \$983  |
| MUNL-24     | UnLatch for Mortise Lock- 24VDC                    | \$983  |
| MUNL-12-10B | UnLatch for Mortise Lock- 12VDC, Oil Rubbed Bronze | \$1055 |
| MUNL-24-10B | UnLatch for Mortise Lock- 24VDC, Oil Rubbed Bronze | \$1055 |
| MUNL-12-US3 | UnLatch for Mortise Lock- 12VDC, Bright Brass      | \$1007 |
| MUNL-24-US3 | UnLatch for Mortise Lock- 24VDC, Bright Brass      | \$1007 |

## Accessories

| ITEM     | DESCRIPTION                                  | PRICE |
|----------|--|-------|
| FSUNL-12 | Fail Safe/Fail Secure UnLatch Module, 12 VDC | \$191 |
| FSUNL-24 | Fail Safe/Fail Secure UnLatch Module, 24 VDC | \$191 |

# Keypads & Card Readers

## DK-12 Stand Alone Keypad

| ITEM  | DESCRIPTION   | PRICE |
|-------|---|-------|
| DK-12 | Digital Keypad System with Illuminated keys — Single Gang | \$261 |



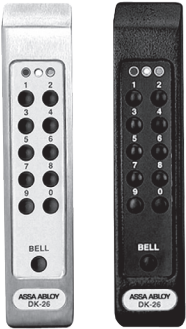
## DK-16 Keypad System

| ITEM   | DESCRIPTION                                 | PRICE |
|--------|---|-------|
| DK-16  | Keypad and Controller — Indoor, Single Gang | \$569 |
| DK-16P | Keypad only — Indoor, Single Gang           | \$310 |



## DK-26 Keypad System

| MODEL  | DESCRIPTION                          | BK    | SS    |
|--------|--------------------------------------|-------|-------|
| DK-26  | Keypad and Controller — Narrow Stile | \$582 | \$565 |
| DK-26P | Keypad only — Narrow Stile           | \$309 | \$288 |



**R100 Aperio® Card Reader Factory Paired with Wiegand Hub**

| ITEM               | DESCRIPTION  | PRICE  |
|--------------------|--|--------|
| <b>R100H-IPS-B</b> | Aperio® Wireless Card Reader Factory Paired with AH20 (1:1) Wiegand Hub, Black | \$1087 |

**Accessories**

| ITEM            | DESCRIPTION  | PRICE |
|-----------------|--|-------|
| <b>R100-DPK</b> | R100 Aperio® Wireless Card Reader Dress Cover, Aluminum  | \$33  |
| <b>ACC10</b>    | RFID test credentials  | \$44  |
| <b>APD10USB</b> | Used to configure both the Aperio product and/or Aperio hubs via the Program Application software. | \$763 |

**R100 Demo Mount**

| ITEM                   | DESCRIPTION  | PRICE  |
|------------------------|--|--------|
| <b>DEMO-R100-IPS-B</b> | R100 Aperio® Wireless Card Reader Demo Mount With HID multiCLASS SE Card Technology, HID NFC Mobile Access Enabled | \$1153 |



# Push Buttons & Egress Devices

## XMS2 Request to Exit Motion Sensor

| ITEM | DESCRIPTION   | PRICE |
|------|---|-------|
| XMS2 | The XMS2 passive infrared (PIR) motion sensor request to exit (REX) device reliably detects motion near a door and releases its lock. | \$306 |



## EEB Emergency Exit Push Buttons

| ITEM  | DESCRIPTION  | PRICE |
|-------|--|-------|
| EEB2  | Momentary, SPDT, Single Gang, Green/Red/Blue/Handicap, 30 Sec. Timer | \$190 |
| EEB3N | Momentary, SPDT, Narrow, Green/Red, 30 Sec. Timer                    | \$190 |



## Accessories

| ITEM   | DESCRIPTION   | PRICE |
|--------|---|-------|
| PB2-LK | 2" Button, Illumination Kit for PB2E, PB5E, EEB2 Series Push Button | \$41  |
| PB3-LK | Illumination Kit, Green/Red for PB3E/EEB3N Series                   | \$48  |

## PB Exit Push Buttons

| ITEM | DESCRIPTION  | PRICE |
|------|--|-------|
| PB   | 1 1/2" button, Illuminated, Momentary, DPST, Single Gang, Green/Red Lens | \$210 |
| PBA  | 1 1/2" button, Illuminated, Alternate, DPST, Single Gang, Green/Red Lens | \$210 |



## Accessories

| ITEM | DESCRIPTION                                  | PRICE |
|------|--|-------|
| WBB  | Wall Mounted, Weatherized, Single Gang Box   | \$64  |
| WCC  | Wall Mounted, Weather Cover, Single Gang Box | \$88  |

## PB2 Exit Push Buttons

| ITEM | DESCRIPTION  | PRICE |
|------|--|-------|
| PB2  | 2" Button, Illuminated, Momentary, Single Gang, Green/Red/Handicap           | \$135 |
| PB22 | 2" Button, Illuminated, Momentary, DPDT, Single Gang, Green/Red/Handicap     | \$210 |
| PB2E | 2" Button, Non-Illuminated, Momentary, Single Gang, SPDT, Green/Red/Handicap | \$99  |

## Accessories

| ITEM   | DESCRIPTION   | PRICE |
|--------|---|-------|
| PB2-LK | 2" Button, Illumination Kit for PB2E, PB5E, EEB2 Series Push Button | \$41  |
| WBB    | Wall Mounted, Weatherized, Single Gang Box                          | \$64  |
| WCC    | Wall Mounted, Weather Cover, Single Gang Box                        | \$88  |



## PB3 Push Buttons

| ITEM   | DESCRIPTION  | PRICE |
|--------|--|-------|
| PB3    | 3/4" Rectangle Button, Illuminated, Momentary, DPST/DPDT, Single Gang, Green/Red Lens              | \$144 |
| PB3A   | 3/4" Rectangle Button, Illuminated, Alternate, DPST/DPDT, Single Gang, Green/Red Lens              | \$144 |
| PB3AN  | 3/4" Rectangle Button, Illuminated, Alternate, DPST/DPDT, Narrow, Green/Red Lens                   | \$144 |
| PB3E   | 3/4" Rectangle Button, Non-Illuminated, Momentary, DPST/DPDT, Single Gang, Green/Red Lens          | \$109 |
| PB3EA  | 3/4" Rectangle Button, Non-Illuminated, Alternate, DPST/DPDT, Single Gang, Green/Red Lens          | \$109 |
| PB3EAN | 3/4" Rectangle Button, Non-Illuminated, Alternate, DPST/DPDT, Narrow, Green/Red Lens               | \$109 |
| PB3EAR | 3/4" Rectangle Button, Non-Illuminated, Remote, Alternate, DPST/DPDT, Surface Mount Green/Red Lens | \$109 |
| PB3EN  | 3/4" Rectangle Button, Non-Illuminated, Momentary, DPST/DPDT, Narrow, Green/Red Lens               | \$109 |
| PB3ER  | 3/4" Rectangle Button, Non-Illuminated, Remote, Momentary, DPST/DPDT, Surface Mount Green/Red Lens | \$109 |
| PB3N   | 3/4" Rectangle Button, Illuminated, Momentary, DPST/DPDT, Narrow, Green/Red Lens                   | \$144 |

## Accessories

| ITEM   | DESCRIPTION                                       | PRICE |
|--------|---|-------|
| PB3-LK | Illumination Kit, Green/Red for PB3E/EEB3N Series | \$48  |
| WBB    | Wall Mounted, Weatherized, Single Gang Box        | \$64  |
| WCC    | Wall Mounted, Weather Cover, Single Gang Box      | \$88  |



PB4L Push Buttons

| ITEM     | DESCRIPTION   | PRICE |
|----------|---|-------|
| PB4L-2   | 1/2" Round Button, Green Illuminated Halo, Momentary, DPDT, Single Gang, Green/Red LED  | \$182 |
| PB4LA-2  | 1/2" Round Button, Green Illuminated Halo, Alternate, DPDT, Single Gang, Green/Red LED  | \$182 |
| PB4LAN-2 | 1/2" Round Button, Green Illuminated Halo, Alternate, DPDT, Narrow Stile, Green/Red LED | \$182 |
| PB4LN-2  | 1/2" Round Button, Green Illuminated Halo, Momentary, DPDT, Narrow Stile, Green/Red LED | \$182 |



PB5 Push Buttons

| ITEM | DESCRIPTION  | PRICE |
|------|--|-------|
| PB5  | 2" Round Button, Illuminated, Momentary, SPDT, Single Gang, Green/Red/Handicap     | \$166 |
| PB5E | 2" Round Button, Non-Illuminated, Momentary, SPDT, Single Gang, Green/Red/Handicap | \$127 |



Accessories

| ITEM   | DESCRIPTION   | PRICE |
|--------|---|-------|
| PB2-LK | 2" Button, Illumination Kit for PB2E, PB5E, EEB2 Series Push Button | \$41  |
| WBB    | Wall Mounted, Weatherized, Single Gang Box                          | \$64  |
| WCC    | Wall Mounted, Weather Cover, Single Gang Box                        | \$88  |

## MK Mortise Key Switches

| ITEM  | DESCRIPTION  | PRICE |
|-------|--|-------|
| MK    | Momentary, SPDT, Single Gang, Green/Red LED          | \$183 |
| MK2   | Momentary, DPDT, Single Gang, Green/Red LED          | \$213 |
| MKA   | Alternate, SPDT, Single Gang, Green/Red LED          | \$183 |
| MKA2  | Alternate, DPDT, Single Gang, Green/Red LED          | \$213 |
| MKAN  | Alternate, SPDT, Narrow, Green/Red LED               | \$183 |
| MKAN2 | Alternate, DPDT, Narrow, Green/Red LED               | \$213 |
| MKN   | Momentary, SPDT, Narrow, Green/Red LED               | \$183 |
| MKN2  | Momentary, DPDT, Narrow, Green/Red LED               | \$213 |
| MKPZ  | Momentary, SPDT, Double Gang, Green/Red LED, Audible | \$274 |
| MKAPZ | Alternate, SPDT, Double Gang, Green/Red LED, Audible | \$274 |



## MK Accessories

| ITEM   | DESCRIPTION  | PRICE |
|--------|--|-------|
| MKC-KA | Mortise Cylinder for MK Series – Keyed Alike       | \$111 |
| MKC-KD | Mortise Cylinder for MK Series – Keyed Differently | \$111 |
| MKS    | Momentary, Switch Only                             | \$48  |
| MKS2   | DPDT Momentary, Switch Only                        | \$78  |
| MKSA   | Alternate, Switch Only                             | \$48  |
| MKSA2  | DPDT Alternate, Switch Only                        | \$78  |

## KP-1 Tubular Key Switches

| ITEM | DESCRIPTION      | PRICE |
|------|------------------|-------|
| KP1  | Momentary Switch | \$229 |
| KP1A | Alternate Switch | \$229 |



WSS Wave Sense® Hands-Free Activation Switch

| ITEM    | DESCRIPTION  | PRICE |
|---------|--|-------|
| WSS-WSD | Wave Sense Switch, White Single/ Double Gang Faceplate | \$507 |



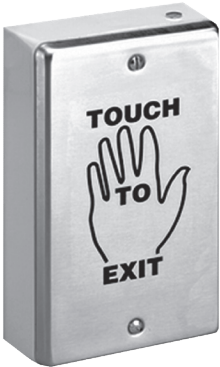
Accessories

| ITEM | DESCRIPTION                                  | PRICE |
|------|--|-------|
| WBB  | Wall Mounted, Weatherized, Single Gang Box   | \$64  |
| WCC  | Wall Mounted, Weather Cover, Single Gang Box | \$88  |

NOTE: WBB & WCC accessories are only compatible with the WSS-WSD Single Gang Faceplate option

SP-1 Capacitive Touch Sense® Switch

| ITEM   | DESCRIPTION                                | PRICE |
|--------|--|-------|
| SP-1   | Touch Sense® Switch                        | \$287 |
| SP-1L  | Label Touch Switch [SP-1]                  | \$15  |
| SP-1LH | Label Touch Switch [SP-1] — Handicap Decal | \$15  |



## DSB Dual Sense® Egress Bar

| MODEL          | DESCRIPTION                                  | BK    | CL    |
|----------------|--|-------|-------|
| <b>DSB</b>     | Non-Illuminated, 36" (Standard), 42", or 48" | \$724 | \$698 |
| <b>DSB-xxl</b> | Illuminated, 36" (Standard), 42", or 48"     | \$959 | \$929 |
| <b>EL-DSB</b>  | ElectroLynx®, Illuminated, 36" Only          | \$771 | \$750 |



## Accessories

| ITEM           | DESCRIPTION                                       | PRICE |
|----------------|---|-------|
| <b>DSB-TDM</b> | Through Door Mounting Kit for DSB                 | \$26  |
| <b>TCP-BK</b>  | Touch Bar Cover Plates — Set of 2, Black Anodized | \$128 |
| <b>TCP-CL</b>  | Touch Bar Cover Plates — Set of 2, Clear Anodized | \$126 |

## How to Order Specify quantity and the following information. Order related products separately.

| CONNECTOR STYLE                   | MODEL SERIES              | FINISH                   | ILLUMINATION                   | BAR LENGTH                       |
|-----------------------------------|---------------------------|--------------------------|--------------------------------|----------------------------------|
| <b>EL</b>                         | <b>– DSB</b>              | <b>– CL</b>              | <b>I</b>                       | <b>42</b>                        |
| <b>(blank)</b> No Connectors      | <b>DSB</b> Dual Sense Bar | <b>BK</b> Black Anodized | <b>(blank)</b> Non Illuminated | <b>(blank)</b> 36" Standard Unit |
| <b>EL</b> ElectroLynx® Connectors |                           | <b>CL</b> Clear Anodized | <b>I</b> Illuminated           | <b>42</b> 42" Length             |
|                                   |                           |                          |                                | <b>48</b> 48" Length             |

NOTE: Not every combination above is possible. Please contact the factory if you need a combination of features not listed on this page.

## TSB Touch Sense® Egress Bar

| MODEL          | DESCRIPTION   | BK    | CL    |
|----------------|---|-------|-------|
| <b>TSB</b>     | 36" (Standard), 42", or 48"                                   | \$659 | \$615 |
| <b>TSB-xxT</b> | Trailing Edge Timer [3 Sec.] — BK 36" only, CL 36" or 42"     | \$659 | \$615 |
| <b>EL-TSB</b>  | ElectroLynx® — 36" (Standard), 42", or 48"                    | \$686 | \$642 |
| <b>DTSB</b>    | Dummy with End Caps & Fasteners — 36" (Standard), 42", or 48" | \$337 | \$304 |



## Accessories

| ITEM           | DESCRIPTION                                       | PRICE |
|----------------|---|-------|
| <b>TSB-TDM</b> | Through Door Mounting Kit for TSB                 | \$25  |
| <b>TCP-BK</b>  | Touch Bar Cover Plates — Set of 2, Black Anodized | \$128 |
| <b>TCP-CL</b>  | Touch Bar Cover Plates — Set of 2, Clear Anodized | \$126 |

## How to Order Specify quantity and the following information. Order related products separately.

| CONNECTOR STYLE                   | MODEL SERIES               | FINISH                   | SPECIAL FEATURES             | BAR LENGTH                       |
|-----------------------------------|----------------------------|--------------------------|------------------------------|----------------------------------|
| <b>EL</b>                         | <b>– TSB</b>               | <b>– CL</b>              | <b>T</b>                     | <b>– 42</b>                      |
| <b>(blank)</b> No Connectors      | <b>TSB</b> Touch Sense Bar | <b>BK</b> Black Anodized | <b>T</b> Trailing Edge Timer | <b>(blank)</b> 36" Standard Unit |
| <b>EL</b> ElectroLynx® Connectors |                            | <b>CL</b> Clear Anodized |                              | <b>42</b> 42" Length             |
|                                   |                            |                          |                              | <b>48</b> 48" Length             |

NOTE: Not every combination above is possible. Please contact the factory if you need a combination of features not listed on this page.

EMB Electromechanical Egress Bar

| MODEL | DESCRIPTION                                    | BK    | CL    |
|-------|--|-------|-------|
| EMB   | 36" (Standard), 42", or 48"                    | \$398 | \$375 |
| WEMB  | Weather Resistant, 36" (Standard), 42", or 48" | \$440 | \$414 |



Accessories

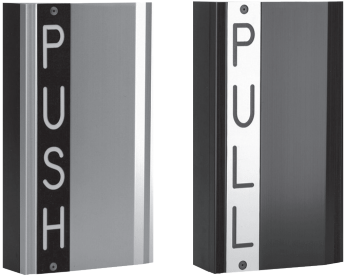
| ITEM   | DESCRIPTION                                       | PRICE |
|--------|---|-------|
| TCP-BK | Touch Bar Cover Plates — Set of 2, Black Anodized | \$128 |
| TCP-CL | Touch Bar Cover Plates — Set of 2, Clear Anodized | \$126 |

How to Order *Specify quantity and the following information. Order related products separately.*

| MODEL SERIES                                 | FINISH            | BAR LENGTH                |
|--|-------------------|---------------------------|
| EMB  | – CL              | – 48                      |
| EMB Electromechanical Bar                    | BK Black Anodized | (blank) 36" Standard Unit |
| WEMB Weather Resistant Electromechanical Bar | CL Clear Anodized | 42 42" Length             |
|  |                   | 48 48" Length             |

TSH Touch Sense® Handle

| MODEL  | DESCRIPTION              | BK    | CL    |
|--------|--------------------------|-------|-------|
| TSH    | Push/Pull                | \$649 | \$638 |
| EL-TSH | ElectroLynx® — Push/Pull | \$690 | \$677 |

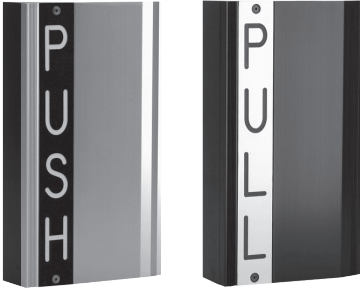


How to Order *Specify quantity and the following information. Order related products separately.*

| CONNECTOR STYLE            | MODEL SERIES           | FINISH            |
|----------------------------|------------------------|-------------------|
| EL                         | – TSH                  | – CL              |
| (blank) No Connectors      | TSH Touch Sense Handle | BK Black Anodized |
| EL ElectroLynx® Connectors |                        | CL Clear Anodized |

EMH Electromechanical Handle

| MODEL  | DESCRIPTION              | BK    | CL    |
|--------|--------------------------|-------|-------|
| EMH    | Push/Pull                | \$703 | \$673 |
| EL-EMH | ElectroLynx® — Push/Pull |       | \$658 |



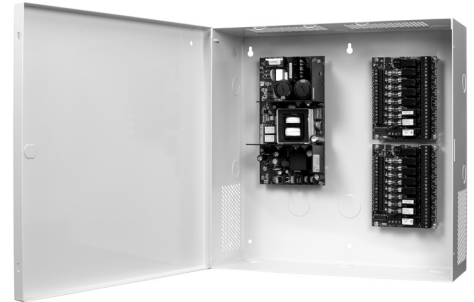
How to Order *Specify quantity and the following information. Order related products separately.*

| CONNECTOR STYLE            | MODEL SERIES                 | FINISH            |
|----------------------------|------------------------------|-------------------|
| EL                         | – EMH                        | – CL              |
| (blank) No Connectors      | EMH Electromechanical Handle | BK Black Anodized |
| EL ElectroLynx® Connectors |                              | CL Clear Anodized |

# Power

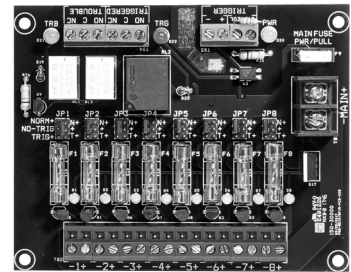
## AQD Series Power Supplies with Enclosures

| ITEM | DESCRIPTION                                     | PRICE |
|------|---|-------|
| AQD1 | 1 Amp, Dual Voltage Power Supply with enclosure | \$327 |
| AQD2 | 2 Amp, Dual Voltage Power Supply with enclosure | \$394 |
| AQD4 | 4 Amp, Dual Voltage Power Supply with enclosure | \$443 |
| AQD6 | 6 Amp, Dual Voltage Power Supply with enclosure | \$494 |



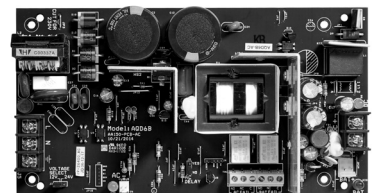
## AQD Series Distribution Boards

| ITEM      | DESCRIPTION   | PRICE |
|-----------|---|-------|
| PDB-1R    | Fire Trigger / Relay Interface Board                        | \$64  |
| PDB-8F2   | 8 Glass Fused Outputs, 2 Amp each                           | \$75  |
| PDB-8C2   | 8 PTC Outputs, 2 Amp each                                   | \$75  |
| PDB-8F8R2 | 8 Glass Fused Outputs with Relays, Fire Trigger, 2 Amp each | \$180 |
| PDB-8C8R2 | 8 PTC Outputs with Relays, Fire Trigger, 2 Amp each         | \$180 |
| PDB-8C1R2 | 8 PTC Outputs, Fire Trigger/Relay, 2 Amp each               | \$149 |
| PDB-8F1R2 | 8 Glass Fuse Outputs, Fire Trigger/Relay, 2 Amp each        | \$149 |



## AQD Series Power Supply Boards Only

| ITEM  | DESCRIPTION                                 | PRICE |
|-------|---|-------|
| AQD1B | 1 Amp, Dual Voltage Power Supply Board Only | \$190 |
| AQD2B | 2 Amp, Dual Voltage Power Supply Board Only | \$252 |
| AQD4B | 4 Amp, Dual Voltage Power Supply Board Only | \$299 |
| AQD6B | 6 Amp, Dual Voltage Power Supply Board Only | \$349 |



Common power supply configurations for reference:

| ITEM       | DESCRIPTION  | PRICE |
|------------|--|-------|
| AQD1-1R    | 1 Amp, Dual Voltage Power Supply with enclosure, Fire Trigger  | \$387 |
| AQD2-1R    | 2 Amp, Dual Voltage Power Supply with enclosure, Fire Trigger  | \$455 |
| AQD2-8F8R2 | 2 Amp, Dual Voltage Power Supply with enclosure, 8 outputs, 2 Amp glass fuse, 8 relays, Fire Trigger     | \$570 |
| AQD4       | 4 Amp, Dual Voltage Power Supply with enclosure  | \$443 |
| AQD4-8C8R2 | 4 Amp, Dual Voltage Power Supply with enclosure, 8 outputs, 2 Amp PTC polyswitch, 8 relays, Fire Trigger | \$619 |
| AQD4-8F8R2 | 4 Amp, Dual Voltage Power Supply with enclosure, 8 outputs, 2 Amp glass fuse, 8 relays, Fire Trigger     | \$619 |
| AQD6-8C1R2 | 6 Amp, Dual Voltage Power Supply with enclosure, 8 outputs, 2 Amp PTC polyswitch, 1 relay, Fire Trigger  | \$640 |
| AQD6-8C8R2 | 6 Amp, Dual Voltage Power Supply with enclosure, 8 outputs, 2 Amp PTC polyswitch, 8 relays, Fire Trigger | \$670 |
| AQD6-8F8R2 | 6 Amp, Dual Voltage Power Supply with enclosure, 8 outputs, 2 Amp glass fuse, 8 relays, Fire Trigger     | \$670 |

How to Order *Specify quantity and the following information. Order related products separately.*

| MODEL SERIES | OUTPUT TYPE    | OUTPUT POWER | ENCLOSURE STYLE      | NUMBER OF OUTPUTS                         | FUSE TYPE*       | NUMBER OF RELAYS | FUSE SIZE |
|--------------|----------------|--------------|----------------------|---|------------------|------------------|-----------|
| AQ           | D              | 6            | —                    | 8   | F                | 8                | 2         |
| AQ           | D Dual Voltage | 1            | — In Enclosure       | (blank) One Output, No Distribution Board |                  |                  |           |
|              |                | 2            | B Circuit Board Only | 8   | F Glass Fuses    | 8R               | 2 2 Amp   |
|              |                | 4            |                      | 12  | C PTC Polyswitch | 16R              |           |
|              |                | 6            |                      | 16  |                  |                  |           |

\*Fuse type and size must be the same for both distribution boards for standard ordering.  
For custom configurations, please contact the factory at 800.626.7590.

## AQL Series Power Supplies Boards without Enclosures

| ITEM          | DESCRIPTION  | PRICE |
|---------------|--|-------|
| <b>AQL4</b>   | 4 Amp at 12 VDC or 3 Amp at 24 VDC, Dual Voltage Power Supply Board Only | \$372 |
| <b>AQL6</b>   | 6 Amp, Dual Voltage Power Supply Only                                    | \$420 |
| <b>AQL102</b> | 10 Amp at 12 VDC, Single Voltage Power Supply Only                       | \$457 |
| <b>AQL104</b> | 10 Amp at 24 VDC, Single Voltage Power Supply Only                       | \$505 |

## AQL Series Modules

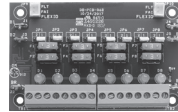
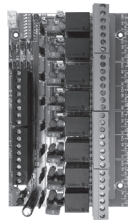
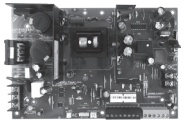
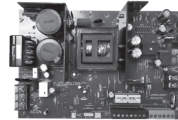
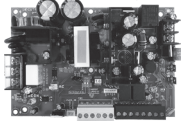
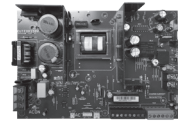
| ITEM        | DESCRIPTION                                      | PRICE |
|-------------|--|-------|
| <b>B100</b> | Secondary Voltage Module                         | \$122 |
| <b>D8</b>   | 3 A ATO Fused Power Distribution Module          | \$87  |
| <b>D8P</b>  | 2.5 A Polyswitch Fused Power Distribution Module | \$87  |
| <b>R8</b>   | Lock Power Distribution Module                   | \$172 |
| <b>R8P</b>  | Lock Power Distribution Module, Class 2 Rated    | \$172 |

## AQL Series E-Series Enclosures

| ITEM      | DESCRIPTION                        | PRICE |
|-----------|------------------------------------|-------|
| <b>E1</b> | E1 Enclosure (14H" x 12W" x 4.5D") | \$147 |
| <b>E2</b> | E2 Enclosure (20H" x 16W" x 4.5D") | \$291 |

## AQL Series Power Supplies with E- Series Enclosures

| ITEM             | DESCRIPTION   | PRICE |
|------------------|---|-------|
| <b>AQL4-E1</b>   | 4 Amp at 12 VDC or 3 Amp at 24 VDC Power Supply with E1 Enclosure | \$517 |
| <b>AQL6-E1</b>   | 6 Amp, Dual Voltage Power Supply with E1 Enclosure                | \$565 |
| <b>AQL102-E1</b> | 10 Amp at 12 VDC, Single Voltage Power Supply with E1 Enclosure   | \$602 |
| <b>AQL104-E1</b> | 10 Amp at 24 VDC, Single Voltage Power Supply with E1 Enclosure   | \$650 |
| <b>AQL4-E2</b>   | 4 Amp at 12 VDC or 3 Amp at 24 VDC Power Supply with E2 Enclosure | \$646 |
| <b>AQL6-E2</b>   | 6 Amp, Dual Voltage Power Supply with E2 Enclosure                | \$693 |
| <b>AQL102-E2</b> | 10 Amp at 12 VDC, Single Voltage Power Supply with E2 Enclosure   | \$729 |
| <b>AQL104-E2</b> | 10 Amp at 24 VDC, Single Voltage Power Supply with E2 Enclosure   | \$776 |



AQL Series Common Configurations

| ITEM            | DESCRIPTION   | PRICE |
|-----------------|---|-------|
| AQL4-D8E1       | 4 Amp at 12 VDC or 3 Amp at 24 VDC Power Supply, 8 Output Auxiliary Power Distribution Module with E1 Enclosure   | \$603 |
| AQL4-R8E1       | 4 Amp at 12 VDC or 3 Amp at 24 VDC Power Supply, 8 Output Lock Power Distribution Module with E1 Enclosure  | \$688 |
| AQL4-B100D8E1   | 4 Amp, Dual Voltage Power Supply, Voltage Conversion Module and Auxiliary Power Distribution Module with E1 Enclosure   | \$725 |
| AQL4-B100R8E1   | 4 Amp, Dual Voltage Power Supply, Secondary Voltage Conversion Module and 8 Output Lock Power Distribution Module with E1 Enclosure                                 | \$810 |
| AQL6-D8E1       | 6 Amp, Dual Voltage Power Supply and 8 Output Auxiliary Power Distribution Module with E1 Enclosure   | \$651 |
| AQL6-R8E1       | 6 Amp, Dual Voltage Power Supply and 8 Output Lock Power Distribution Module with E1 Enclosure  | \$736 |
| AQL6-B100R8E1   | 6 Amp, Dual Voltage Power Supply, Voltage Conversion Module and 8 Output Lock Power Distribution Module with E1 Enclosure   | \$858 |
| AQL6-B100D8E1   | 6 Amp, Dual Voltage Power Supply, Voltage Conversion Module, 8 Output Auxiliary Power Distribution Module with E1 Enclosure   | \$773 |
| AQL6-B100D8R8E1 | 6 Amp Dual Voltage Power Supply, Voltage Conversion Module, 8 Output Auxiliary Power Distribution Module, 8 Output Lock Power Distribution Module with E1 Enclosure | \$943 |

How to Order *For additional guidance on available configurations, please visit securitron.com*

| POWER SUPPLY MODULE  | SECONDARY VOLTAGE MODULE   | AUXILIARY POWER DISTRIBUTION MODULE   | LOCK POWER DISTRIBUTION MODULE   | ENCLOSURE              |
|--|--|---|--|------------------------|
| AQL4   | -B100  | D8  | R8   | E2                     |
| NOTE: The Power Supply provides a single voltage without the addition of a Secondary Voltage module (B100) | NOTE: The Secondary Voltage module utilizes power provided by the power supply that it is connected to and converts it to a secondary voltage; it does not provide additional power. | NOTE: Auxiliary Power Distribution modules provide up to (8) powered relay outputs. | NOTE: Lock Power Distribution modules provide up to (8) independently configurable relays outputs. |                        |
| AQL4 4A @ 12VDC, 3A @ 24VDC  | (blank)  | D8 (1) Input   (8) Outputs  | R8 (8) Inputs   (8) Outputs, (8) Configurable Outputs  | E1 14H" x 12W" x 4.5D" |
| AQL6 6A @ 12VDC or 24VDC   | B100 4A @ 5-18VDC  | D8P (1) Input   (8) Outputs, Class 2 rated  | R8P (8) Inputs   (8) Outputs, (8) Configurable Outputs, Class 2 rated                              | E2 20H" x 16W" x 4.5D" |
| AQL102 10A @ 12VDC   |  |   |  |                        |
| AQL104 10A @ 24VDC   |  |   |  |                        |

AQE Single-Port PoE Injector

| ITEM   | DESCRIPTION                             | PRICE |
|--------|---|-------|
| AQE30  | MidSpan Injector, 2.6 Amp, Dual Voltage | \$304 |
| AQE30E | MidSpan Extractor, 0.6 Amp              | \$304 |



PSP Plug-In Power Supplies

| ITEM       | DESCRIPTION     | PRICE |
|------------|-----------------|-------|
| PSP-12     | 12 VDC, 700 mA  | \$96  |
| PSP-24     | 24 VDC, 350 mA  | \$89  |
| PSP-12-3   | 12 VDC, 3 Amp   | \$188 |
| PSP-24-1.5 | 24 VDC, 1.5 Amp | \$188 |



# Additional Power Products

## Additional Power Products

| ITEM    | DESCRIPTION              | PRICE |
|---------|--------------------------|-------|
| B-12-5  | Battery — 12 VDC, 5 Amp  | \$98  |
| B-12-9  | Battery — 12 VDC, 9 Ah   | \$275 |
| B-12-18 | Battery — 12 VDC, 18 Ah  | \$354 |
| B-24-5  | Battery — 24 VDC, 5 Amp  | \$213 |
| BR-4    | Bridge Rectifier — 4 Amp | \$67  |
| CKL     | Cabinet Key Lock         | \$37  |



# Power Transfers

## CEPT Concealed Electrical Power Transfers

| MODEL           | DESCRIPTION             | 606   | 612   | 613E  | 630   | BSP   |
|-----------------|-------------------------|-------|-------|-------|-------|-------|
| <b>CEPT-10</b>  | 10 Wire                 | \$678 | \$711 | \$654 | \$490 | \$654 |
| <b>CEPT-C5E</b> | CAT-5E                  | \$745 | \$781 | \$716 | \$553 | \$716 |
| <b>CEPT-NW</b>  | No Wires                | \$684 | \$717 | \$654 | \$494 | \$654 |
| <b>EL-CEPT</b>  | ElectroLynx® Connectors | \$789 | \$828 | \$759 | \$593 | \$759 |

## How to Order Specify quantity and the following information. Order related products separately.

| WIRE CONNECTORS   | MODEL                                 | NUMBER OF WIRES                 | FINISH  |
|---|---------------------------------------|---------------------------------|---|
| EL  | – CEPT                                | – C5E                           | – 613E  |
| (blank) No Connectors   | <b>CEPT</b> Concealed Power Transfers | (blank) 12 Wires (EL CEPT only) | (blank) 630 Satin Stainless Steel             |
| EL ElectroLynx® Connectors (EL only available on 12 wire version) |                                       | <b>10</b> 10 Wires              | <b>04</b> US04/606 Satin Brass                |
|   |                                       | <b>C5E</b> 9 Wires              | <b>10</b> US10/612 Satin Bronze               |
|   |                                       | <b>NW</b> No Wires              | <b>613E</b> Dark Oxidized Satin Bronze Powder |
|   |                                       |                                 | <b>BSP</b> Black Suede Powder                 |

**NOTE:** Not every combination is possible. Please contact factory if you need a combination of features not listed above.



## SEPT Square-Cut Electrical Power Transfers

| ITEM            | DESCRIPTION  | PRICE |
|-----------------|--|-------|
| <b>EL-SEPT</b>  | ElectroLynx® Connectors (Compatible with 12-22AWG wires) | \$139 |
| <b>SEPT</b>     | Cut Standard Version                                     | \$106 |
| <b>SEPT-10</b>  | 10 Wire  | \$151 |
| <b>SEPT-C5E</b> | CAT-5E Compatible  | \$144 |



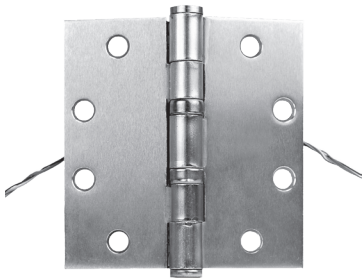
EPT Electrical Power Transfers

| ITEM      | DESCRIPTION                           | PRICE |
|-----------|---------------------------------------|-------|
| EL-EPT    | ElectroLynx® 10" Cord, Standard Swing | \$145 |
| EL-EPT-SC | ElectroLynx® 10" Cord, Swing Clear    | \$190 |
| EL-EPTL   | ElectroLynx® 18" Cord, Standard Swing | \$176 |
| EPT       | 10" Cord, Standard Swing              | \$94  |
| EPT-SC    | 10" Cord, Swing Clear                 | \$142 |
| EPTL      | 18" Cord, Standard Swing              | \$127 |



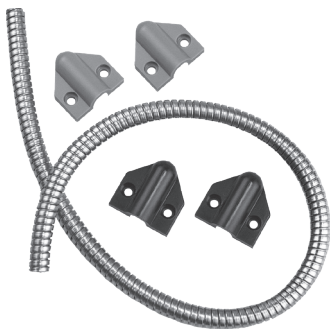
EH Electric Hinges

| ITEM  | DESCRIPTION          | PRICE |
|-------|----------------------|-------|
| EH-40 | 6 Wire [4.5" x 4.0"] | \$372 |
| EH-45 | 6 Wire [4.5" x 4.5"] | \$372 |



TSB-C Door Cords

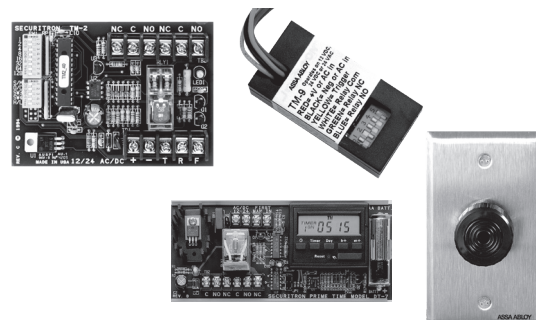
| ITEM    | DESCRIPTION                | PRICE |
|---------|----------------------------|-------|
| TSB-C   | With Caps, Gray/Black, 18" | \$51  |
| TSB-CXL | With Caps, Gray/Black, 36" | \$62  |



# Accessories

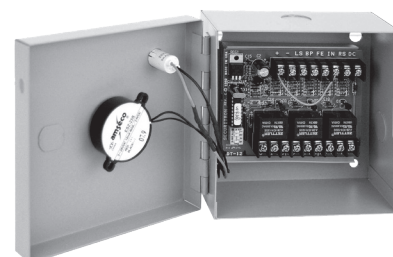
## DT-7, PZ1, TM-2 and TM-9 Timers & Alarms

| ITEM | DESCRIPTION  | PRICE |
|------|--|-------|
| DT-7 | Control doors equipped with electrified hardware - with or without access control - with the DT-7 digital timer. | \$332 |
| PZ1  | Piezo on Keyplate — Single Gang  | \$101 |
| TM-2 | Multi-Function Timer, 1-255 seconds  | \$208 |
| TM-9 | Time Mate Timer, 2-36 Seconds  | \$107 |



## BA-DPA Drop Prop Alarm Monitoring

| ITEM      | DESCRIPTION             | PRICE |
|-----------|-------------------------|-------|
| BA-DPA-12 | 12 VDC with Boxed Alarm | \$363 |
| BA-DPA-24 | 24 VDC With Boxed Alarm | \$363 |



## DPS Door Position Switches

| ITEM     | DESCRIPTION            | PRICE |
|----------|------------------------|-------|
| DPS-M-BK | For Metal Doors, Black | \$43  |
| DPS-M-GY | For Metal Doors, Grey  | \$43  |
| DPS-M-WH | For Metal Doors, White | \$43  |
| DPS-W-BK | For Wood Doors, Black  | \$33  |
| DPS-W-GY | For Wood Doors, Grey   | \$33  |
| DPS-W-WH | For Wood Doors, White  | \$33  |



## **MSS** Magnetic High Security Door Position Switch

| ITEM             | DESCRIPTION                   | PRICE |
|------------------|-------------------------------|-------|
| <b>MSS-1</b>     | Magnetic High Security Switch | \$312 |
| <b>MSS-1-RT</b>  | Remote Test                   | \$366 |
| <b>MSS-1C</b>    | Concealed                     | \$312 |
| <b>MSS-1C-RT</b> | Concealed, Remote Test        | \$366 |
| <b>MSS-1G</b>    | Surface Mount                 | \$312 |
| <b>MSS-1G-RT</b> | Surface Mount, Remote Test    | \$366 |



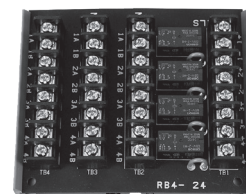
### LM Latch Monitor Status Switch

| ITEM         | DESCRIPTION                                     | PRICE |
|--------------|---|-------|
| <b>LML-1</b> | ANSI, 4-7/8, Strike, SPDT, 3 Amp                | \$170 |
| <b>LML-2</b> | ANSI, 4-7/8, Strike, SPDT, 3 Amp, Dual Switches | \$229 |
| <b>LMS-1</b> | ANSI, 2-3/4", Strike, SPDT, 3 Amp               | \$170 |



## RB-4, RLP Relay Boards & Logic Packs

| ITEM           | DESCRIPTION               | PRICE |
|----------------|---------------------------|-------|
| <b>RB-4-24</b> | Relay Board — 24 VDC      | \$164 |
| <b>RLP-12</b>  | Relay Logic Pack — 12 VDC | \$89  |
| <b>RLP-24</b>  | Relay Logic Pack — 24 VDC | \$89  |



## Warranties

In 1999 Securitron® introduced the first no-fault, no-questions asked warranty to the industry, MagnaCare®. We believe that the best products in the industry should be supported by our commitment to deliver the highest quality products and services. This is our expectation and commitment to you – our valued customer.



**MagnaCare  
Warranty**

### MagnaCare Warranty

**Duration:** Lifetime

**Condition:** Any reason, including, but not limited to, installation error, vandalism or force majeure.

**Replacement:** Replacement product or equivalent shipped at Securitron expense via next day air freight in most cases.

**Products Covered:**

- Electromagnetic and Specialty Locks
- Power Supplies (excluding BPSS) and Power Transfers
- Push Buttons, Keypads, Keyswitches and Egress Devices

.....



**SecuriCare  
Warranty**

### SecuriCare 5-year Warranty

**Duration:** Five years from date of shipment

**Condition:** Any reason, including but not limited to, installation error, vandalism or force majeure

**Replacement:** Replacement product or equivalent shipped at Securitron's expense via next day air freight in most cases.

**Products Covered:**

- Electric Strikes & Accessories (MUNL, UNL, FSNUL)

.....



**SecuriCare  
Warranty**

### SecuriCare 3-year Warranty

**Duration:** Three years from date of shipment

**Condition:** Any reason, including but not limited to, installation error, vandalism or force majeure

**Replacement:** Replacement product or equivalent shipped at Securitron's expense via next day air freight in most cases.

**Products Covered:**

- DR100 and R100 Aperio® Wireless Card Readers
- BPSS Solar Power Supplies
- GL1 Gate Lock & Accessories
- Accessories

Check your individual product to determine warranty coverage. Batteries and consumables are not covered by Securitron Warranty programs. Replacement products, at Securitron's sole option, may be the identical item or a unit which serves as a functional replacement. If the customer has an account with Securitron or a valid credit card, the customer may order an advance replacement product, whereby Securitron will charge the customer's account for the price of the product plus next day air freight, and will credit back to the customer the full amount of the charge, including outbound freight, upon Securitron's receipt of the original product from the customer. Securitron's sole and exclusive liability, and customer's sole remedy, is limited to the replacement of the Securitron product when delivered to Securitron's facility (freight and insurance charges prepaid by customer).

## Securitron® Terms & Conditions

**PRICES:** All prices are subject to change without notice. Prices listed on the Securitron website will serve as the most current list price. All shipments will be made at prices in effect at the time of order. The customer shall be responsible for payment of all applicable sales and/or use taxes and freight costs.

**MINIMUM ORDER:** Minimum product charge per invoice is \$150.00 USD.

**PAYMENT TERMS:** Net thirty (30) days from date of invoice. Interest at the rate of up to 1-1/2% per month may be charged on all past due accounts. An order received on an account which has not been paid within 45 days of the date of invoice may not be processed until the account is current. Custom orders may require a deposit.

**DELIVERY TERMS:** All prices are Ex-works factory. Purchaser assumes the risk of loss or damage to the goods while in transit from the point of shipment. Securitron reserves the right to make delivery in installments. Installments shall be separately invoiced and paid for when due. Delay in delivery of an installment shall not relieve the purchaser of its obligation to accept remaining deliveries.

**FREIGHT POLICY:** All Purchase Orders received with a minimum net value of \$3,500 will qualify automatically for free standard freight within the continental United States. This minimum amount applies per Purchase Order to qualify and does not include free expedited freight. Qualified orders may ship partial or ship complete at your preference. Qualified orders that ship partial will not incur freight charges. All shipments that do not qualify for free freight will be charged for freight based upon our terms in effect at the time of shipment. Customers may provide their own carrier account number for expedited freight methods or for any Purchase Order to be used to cover freight costs. Minimum amounts are subject to change without notice.

**SHORTAGE:** Any claim for shortages must be made to Securitron in writing within one (1) week of receipt of merchandise.

**WARRANTY RETURNS:** A Customer Care Form (CCF) for defective product must be obtained from Securitron before any merchandise can be returned. CCF's are valid for sixty (60) days from date of issuance. Goods returned under the terms of MagnaCare® and SecuriCare® Warranties may require a copy of the original invoice.

**RETURNS:** A Customer Care Form (CCF) must be obtained from Securitron before any merchandise can be returned. CCF's are valid for sixty (60) days from date of issuance. Items that are not factory sealed, or that are returned later than 90 days from the date of receipt are subject to a restocking charge plus an additional charge for any damage.

**CANCELLATIONS:** Any order may be subject to a 5% cancellation charge for catalog items. Cancellation of non-catalog or custom items will be subject to a 20% cancellation charge plus all costs (both direct and indirect) incurred by manufacturing at the point of cancellation that are properly allocated to the cancelled item(s).

**LIMITATION OF LIABILITY:** Neither party will be liable to the other for any delay or failure in performance arising directly out of war, sabotage, insurrection, riot, and any other act of civil disobedience, act of public enemy, fire, explosion, flood, storm, or other act of God or nature, or similar cause beyond its reasonable control, including shortage or unavailability of labor or materials. If, notwithstanding the foregoing limitations, Securitron has any liability to the purchaser, the purchaser agrees that the total liability to the purchaser for all losses, damages, and causes of action, whether in contract, equity, tort (including without limitation, negligence and gross negligence), or otherwise, will not exceed the amount the purchaser paid to Securitron for the products (including, without limitation, incidental or consequential damages, damages for lost profits or business interruption, and punitive damages).

**NO THIRD PARTY LIABILITY:** If the purchaser uses the Securitron Products on behalf of others or provides to others any products referenced herein, the Securitron Parties shall have no liability to such persons whatsoever, and the purchaser agrees to defend and indemnify the Securitron Parties from any and all claims and demands asserted against them, and from any legal fees, costs and other expenses that the Securitron Parties incur therewith.

**Export Control and Sanctions**

**1.1** The Customer represents and warrants to ASSA ABLOY SECURITRON that it will always act in compliance with Economic Sanctions and Export Control Laws, and that:

- a) neither the Customer, its affiliates, or any of their respective directors, officers, employees nor, so far as the Customer is aware, any agents or other persons acting on behalf of any of the foregoing:
  - I. is, or has been, a Listed Person;
  - II. has engaged in any business dealings or activities that would reasonably be expected to result in it becoming a Listed Person;
  - III. directly or indirectly, has conducted or is conducting any business dealings or activities with or for the benefit of, or is otherwise involved in any business with a Listed Person, or otherwise acting in violation of Economic Sanctions and Export Control Laws;
  - IV. has engaged or is engaging in any transaction that circumvents, evades or avoids, or has the purpose or effect of circumventing, evading or avoiding, or attempts to violate, any Economic Sanctions and Export Control Laws; or
  - V. is, or has been, in violation of, or subject to, any investigation or enquiry by, or on behalf of, any governmental or other regulatory body relating to Economic Sanctions and Export Control Laws.
- b) the Customer shall act in compliance with Economic Sanctions and Export Control Laws, and shall not sell nor re-export the Product without all requisite licenses and approvals under Economic Sanctions and Export Control Laws;
- c) the Customer shall not sell, export or re-export, the Product, directly or indirectly, to the Russian Federation or Belarus or for use in the Russian Federation or Belarus (whether or not permitted under Economic Sanctions and Export Control Laws applicable to the Customer);
- d) the Customer shall undertake its best efforts to ensure that the purpose of this Clause is not frustrated by any third parties further down the commercial chain, including by possible resellers;
- e) the Customer agrees to (i) cascade the contractual obligations set forth in this Section 1.1. in contracts with third parties, including possible resellers, further down the commercial chain.; and (ii) set up and maintain an adequate monitoring mechanism to detect conduct by any third parties further down the commercial chain, including by possible resellers, that would frustrate the purpose of this Section 1.1;
- f) the representations and warranties set forth in this Section 1.1 above shall always remain true and correct;
- g) the Customer will provide written notice to ASSA ABLOY SECURITRON as promptly as possible and in any event within five business days, if (i) any representation or warranty should cease to be true at any time., or (ii) the Customer should encounter any problems in applying paragraphs b)- e) in this Section 1.1 above, including any relevant activities by third parties that could frustrate the purpose of said paragraphs b)- e); and
- h) the Customer will not engage in any transaction for Military End-Use unless explicitly approved in writing by ASSA ABLOY SECURITRON.
- i) The Customer will provide all information relating to requests for Products that the Customer suspects could violate or circumvent Economic Sanctions and Export Control Laws, including requests from or on behalf of a Listed Person, and other attempts to acquire ASSA ABLOY SECURITRON products in violation of Economic Sanctions and Export Control Laws. The Customer will, to the best of its abilities, cooperate with ASSA ABLOY SECURITRON to facilitate compliance with Economic Sanctions and Export Control Laws and will upon ASSA ABLOY SECURITRON's request provide ASSA ABLOY SECURITRON with true, complete and correct copies of all documentation relating to any business dealings involving the Product, including but not limited to, end-user certifications, information concerning compliance with the obligations under above paragraphs b)- e) in this Section 1.1, and other information as may be required by ASSA ABLOY SECURITRON within two weeks of the simple request of such information.

**1.2** ASSA ABLOY SECURITRON shall not be obliged to make any payment or take any other action if ASSA ABLOY SECURITRON believes in good faith that such action may constitute a violation, contribute to a violation, or constitute a circumvention of any Economic Sanctions and Export Control Laws.

**1.3** This agreement may be terminated immediately by ASSA ABLOY SECURITRON by written notice to the Customer if:

- (a) the Customer fails to provide any notice required under this Section 1.1 above, or should ASSA ABLOY SECURITRON determine, in its sole discretion, that any representation or warranty set forth in Section 1.1 above has failed to be true and correct at any time;
- (b) the Customer has misrepresented or failed to properly disclose any material fact, or to provide any documentation, certifications or information requested by ASSA ABLOY SECURITRON; or,

- (c) either party's ability to fulfil an obligation under this agreement is materially affected by the imposition of restrictions in Economic Sanctions and Export Control Laws.

**1.4** Upon any such termination, this agreement and all rights and obligations hereunder shall immediately terminate, provided that the Customer shall remain liable to ASSA ABLOY SECURITRON for any breach of its obligations hereunder.

**1.5** The Customer shall indemnify ASSA ABLOY SECURITRON and its affiliates, directors, officers, employees, advisors, agents and holders of its equity interests (collectively, "Indemnitees") against, and shall hold each Indemnitee harmless from, any and all third party claims, damages and liabilities, including the reasonable fees, charges and disbursements of counsel, incurred by or asserted against any Indemnitee arising out of, in connection with, or as a result of (a) any representation or warranty set forth in Section 1.1 above not being true and correct when made, (b) any breach by the Supplier of any obligation under Section 1.1 or 1.2 above, or (c) any claim, litigation, investigation or proceeding relating to any of the foregoing, whether based on contract, tort or any other theory. This indemnity shall survive the termination of this agreement indefinitely.

For the purposes of this part of the agreement under the heading "Export Control and Sanctions",

**"Economic Sanctions and Export Control Laws"** means all economic sanctions and export control laws, regulations, rules or restrictive measures, including but not limited to import and export restrictions on materials, intellectual property, other intangible personal property, services, items and transactions, adopted and enforced by governmental authorities of Canada, the EU, UK, UN, USA or any other relevant governmental or regulatory authority, applicable to the ASSA ABLOY SECURITRON or the Customer.

**"Listed Person"** means individuals and entities listed, or parties that are determined to be owned or controlled by one or more individuals or entities listed, in Economic Sanctions and Export Control Laws.

**Compliance with Anti-Trust, Anti-Corruption and Data Privacy Laws:**

The Customer, its directors, officers, and employees shall perform their obligations under these Terms and Conditions in full compliance with the ASSA ABLOY Code of Conduct which is accessible online at:

[Our Code of Conduct for business partners | ASSA ABLOY](#)

[Click this Link to Export Control and Sanctions for Canada](#)



The ASSA ABLOY Group is the global leader in access solutions. Every day we help people feel safe, secure and experience a more open world.

**SECURITRON**  
**ASSA ABLOY**



## USA

800 626 7590 | f. 866 582 4641 | [securitron.com](http://securitron.com)  
[customerservice.securitron@assaabloy.com](mailto:customerservice.securitron@assaabloy.com)  
[techsupport.securitron@assaabloy.com](mailto:techsupport.securitron@assaabloy.com)  
[orders.securitron@assaabloy.com](mailto:orders.securitron@assaabloy.com)

## CANADA

800 461 3007 | f. 800 461 8989 | [assaabloydss.ca](http://assaabloydss.ca)  
[sales.dss.ca@assaabloy.com](mailto:sales.dss.ca@assaabloy.com)  
[orders.dss.ca@assaabloy.com](mailto:orders.dss.ca@assaabloy.com)

Printed in the U.S.

Patent pending and/or patent [www.assaabloydss.com/patents](http://www.assaabloydss.com/patents)

Copyright © 2025, Hanchett Entry Systems, Inc., an ASSA ABLOY Group company.  
All rights reserved. Reproduction in whole or in part without the express written permission of Hanchett Entry Systems, Inc. is prohibited. SEC-119-1225